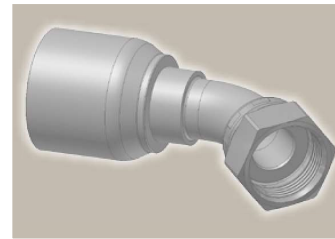
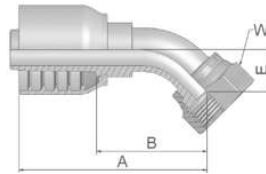





J7 Female ORFS – Swivel 45° Elbow

ISO 12151-1 – SWE 45°
SAE J516 – ORFS 45°



Part Number	 Hose I.D.				 Thread UNF	A mm	B mm	E mm	 W mm
	DN	Inch	Size	mm					
1J770-6-6-SM	10	3/8	-6	9,5	11/16x16	62	33	11	22
1J770-8-6-SM	10	3/8	-6	9,5	13/16x16	64	35	15	24
1J770-6-8-SM	12	1/2	-8	12,7	11/16x16	68	33	11	22
1J770-8-8-SM	12	1/2	-8	12,7	13/16x16	72	37	15	24
1J770-10-8-SM	12	1/2	-8	12,7	1x14	80	46	17	30
1J770-10-10-SM	16	5/8	-10	15,9	1x14	83	44	16	30
1J770-12-10-SM	16	5/8	-10	15,9	1 3/16x12	90	53	21	36
1J770-12-12-SM	19	3/4	-12	19,1	1 3/16x12	92	53	21	36
1J770-16-12-SM	19	3/4	-12	19,1	1 7/16x12	95	56	24	41
1J770-16-16-SM	25	1	-16	25,4	1 7/16x12	113	66	24	41

Approved **fitting series** for hose types, depending on size:

70 | 371LT | 372 | 372RH | 372TC | 701 | 701 TC | F42-8 | SX35