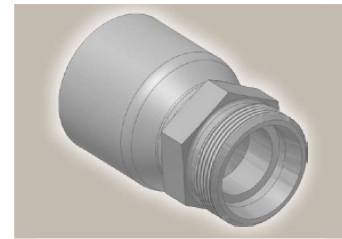
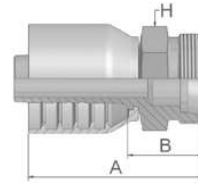


FG Male French Gas Series
Rigid – Straight (24° Cone)



Part Number	Hose I.D.				Thread metric	Tube O.D. mm	A mm	B mm	H mm
	DN	Inch	Size	mm					
1FG70-13-6	10	3/8	-6	9,5	M20x1,5	13,25	46	24	22
1FG70-17-8	12	1/2	-8	12,7	M24x1,5	16,75	62	27	24
1FG70-21-10	16	5/8	-10	15,9	M30x1,5	21,25	70	30	30
1FG70-27-12	19	3/4	-12	19,1	M36x1,5	26,75	70	30	36
1FG70-33-16	25	1	-16	25,4	M45x1,5	33,50	82	36	46

70 Series

Approved **fitting series** for hose types, depending on size:

70	371LT	372	372RH	372TC	701	701 TC	F42-8	SX35
----	-------	-----	-------	-------	-----	--------	-------	------

