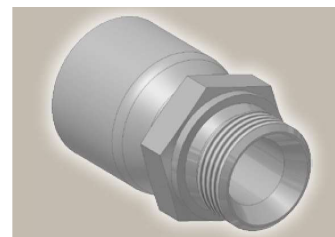
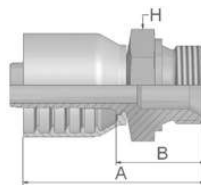





D9 **Male BSP Parallel Pipe**
Rigid – Straight (60° Cone)
BS5200 – AGR



Part Number	 Hose I.D.				 Thread BSP	A mm	B mm	 H mm
	DN	Inch	Size	mm				
1D973-12-12	19	3/4	-12	19.1	3/4x14	87	39	32
1D973-16-16	25	1	-16	25.4	1x11	96	43	41
1D973-20-20	31	1 1/4	-20	31.8	1 1/4x11	113	49	50
1D973-24-24	38	1 1/2	-24	38.1	1 1/2x11	114	51	55
1D973-32-32	51	2	-32	50.8	2x11	129	58	70

Approved **fitting series** for hose types:

73 | 731 | 731TC | SX35 | SX42



Dc-4

Catalogue 4400/UK