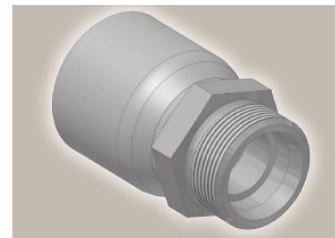
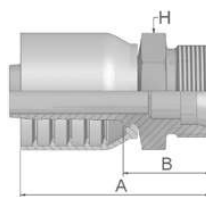


D2 Male Metric 24° – Rigid Heavy Series – Straight

ISO 12151-2-S-S – CES



Part Number	Hose I.D.				Thread metric	Tube	A mm	B mm	H mm
	DN	Inch	Size	mm		O.D. mm			
1D270-12-6	10	3/8	-6	9,5	M20x1,5	12	53	24	22
1D270-14-6	10	3/8	-6	9,5	M22x1,5	14	55	25	22
1D270-16-8	12	1/2	-8	12,7	M24x1,5	16	62	28	24
1D270-20-8	12	1/2	-8	12,7	M30x2	20	67	32	30
1D270-20-10	16	5/8	-10	15,9	M30x2	20	75	32	30
1D270-20-12	19	3/4	-12	19,1	M30x2	20	72	33	30
1D270-25-12	19	3/4	-12	19,1	M36x2	25	74	35	36
1D270-25-16	25	1	-16	25,4	M36x2	25	84	37	36
1D270-30-16	25	1	-16	25,4	M42x2	30	85	40	46

Approved **fitting series** for hose types, depending on size:

70 | 371LT | 372 | 372RH | 372TC | 701 | 701 TC | F42-8 | SX35



Db-4

Catalogue 4400/UK