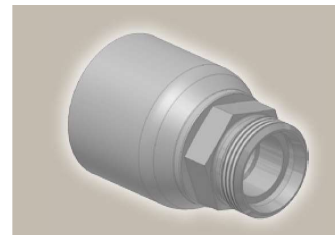
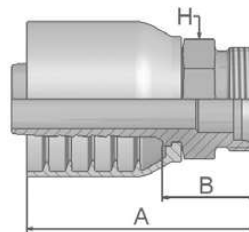


D0 **Male Metric 24°**
Light Series – Rigid
Straight
ISO 12151-2-S-L – CEL



Part Number	 Hose I.D.				 Thread metric	Tube O.D. mm	A mm	B mm	 H mm
	DN	Inch	Size	mm					
1D043-15-8	12	1/2	-8	12.7	M22x1,5	15	60	26	22
1D043-28-16	25	1	-16	25,4	M36x2	28	79	32	36

Approved **fitting series** for hose types, depending on size: Also available in stainless steel. Details can be found in CAT 4400.1/UK

304 387 387ST 387TC 421WC 426 487 487ST 487TC 722 722CLF 722LT 722TC 722ST ...
787 787TC 787ST 797 797TC 797ST 881

