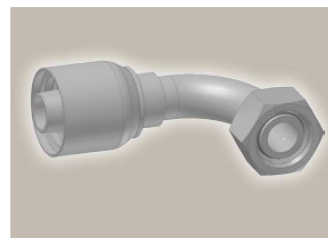
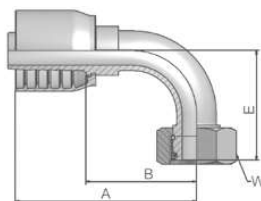


Medium Pressure  
DIN – Metric

Parkrimp No-Skive Fittings  
43 Series

**CF** **Female Metric 24°  
Light Series with O-Ring  
Swivel – 90° Elbow**  
ISO 12151-2-SWE-L – DKOL 90°



Part Number	Hose I.D.				Thread metric	Tube O.D. mm	A mm	B mm	E mm	W mm
	DN	Inch	Size	mm						
1CF43-12-6	10	3/8	-6	9,5	M18x1,5	12	64	35	36	22
1CF43-15-8	12	1/2	-8	12,7	M22x1,5	15	71	37	43	27
1CF43-18-10	16	5/8	-10	15,9	M26x1,5	18	81	41	45	32
1CF43-22-12	19	3/4	-12	19,1	M30x2	22	89	49	55	36
1CF43-28-16	25	1	-16	25,4	M36x2	28	114	68	78	41

Hose fittings are delivered with ozone resistant Nitrile (NBR) O-ring as a standard version. Working temperature from -40 °C up to +105 °C.  
Hose fittings with special O-rings (Viton or EPDM) available on request. O-ring dimensions and part-numbers see in section Eb.

Approved **fitting series** for hose types, depending on size: Also available in stainless steel. Details can be found in CAT 4400.1/UK

<b>43</b>	304	387	387ST	387TC	421WC	426	487	487ST	487TC	722	722CLF	722LT	722TC	722ST	...
	787	787TC	787ST	797	797TC	797ST	881								



Cc-2

Catalogue 4400/UK