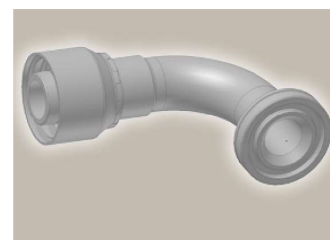
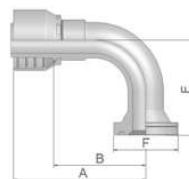


6N ISO 6162-2-Flange 90° Elbow

ISO 12151-3 – E-S – SFS 90°
(42.0 MPa/ 6000 psi)



| Part Number | | Hose I.D. | | | | Flange | A | B | E | F |
|-------------|-------------|-----------|-------|------|------|--------|-----|-----|-----|----|
| 46 series | 48 series | DN | Inch | Size | mm | Inch | mm | mm | mm | |
| 16N46-8-12 | 16N48-8-12 | 19 | 3/4 | -12 | 19.1 | 1/2 | 70 | 44 | 40 | 32 |
| 16N46-12-12 | 16N48-12-12 | 19 | 3/4 | -12 | 19.1 | 3/4 | 80 | 54 | 54 | 41 |
| 16N46-16-12 | 16N48-16-12 | 19 | 3/4 | -12 | 19.1 | 1 | 80 | 54 | 53 | 48 |
| 16N46-12-16 | 16N48-12-16 | 25 | 1 | -16 | 25.4 | 3/4 | 88 | 58 | 70 | 41 |
| 16N46-16-16 | 16N48-16-16 | 25 | 1 | -16 | 25.4 | 1 | 98 | 68 | 70 | 48 |
| 16N46-20-20 | | 31 | 1 1/4 | -20 | 31.8 | 1 1/4 | 124 | 86 | 90 | 54 |
| | 16N48-20-20 | 31 | 1 1/4 | -20 | 31.8 | 1 1/4 | 129 | 82 | 90 | 54 |
| | 16N48-24-24 | 38 | 1 1/2 | -24 | 38.1 | 1 1/2 | 139 | 101 | 104 | 64 |
| | 16N48-32-32 | 51 | 2 | -32 | 50.8 | 2 | 186 | 138 | 138 | 79 |

To select corresponding half-flange and O-ring see section Eb.

Approved **fitting series** for hose types, depending on size: Also available in stainless steel. Details can be found in CAT 4400.1/UK

46 or **48** 441 | 441RH | 461LT | 462 | 462ST | 462CLF | 462TC | 462ST | 629PU | 692PU Twin

46 463 | 492 | 492ST | 492TC | 692 | 692Twin | 692TC | BCH1

48 301SN | 301TC | 304 | 387 | 387ST | 387TC | 421RH | 421SN | 426 | 436 | 441RH | 462PU | 462PU Twin | BCH2 | HT2 | ...

471TC | 477 | 477ST | 477TC | 477RH | 487 | 487ST | 487TC | 493 | 787 | 787TC | 787ST | 797 | 797TC | 797ST | 811 | 881