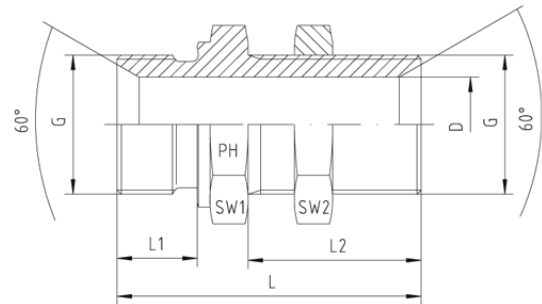
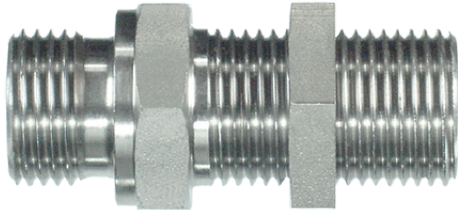


## Straight Bulkhead Adaptors - BSP - Male



BSP Male - BSP Male Both sides with 60°-Cone and Back Nut

Pressure	Thread	Approx. Dimensions						Order-Code
		G	L	L1	L2	D	SW1	
400	1/8"-28	42,5	8	28	4,5	14	14	1450
400	1/4"-19	46,0	11	28	6,0	19	19	7290301105
400	3/8"-19	52,0	12	32	8,0	22	22	7290301110
400	1/2"-14	59,0	14	35	11,0	27	27	7290301115
400	5/8"-14	63,0	16	35	14,5	30	30	SS0539020
400	3/4"-14	66,0	16	38	16,5	32	32	SS0539025
400	1"-11	72,0	19	41	22,5	41	41	SS0539030
200	1 1/4"-11	78,0	20	44	30,5	50	50	SS0539035
200	1 1/2"-11	84,0	22	48	37,0	55	55	SS0539040
100	2"-11	91,0	23	48	46,0	70	70	SS0539045