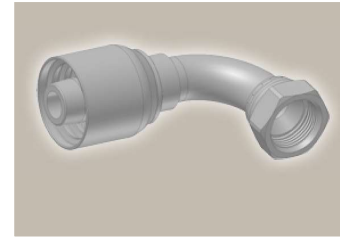
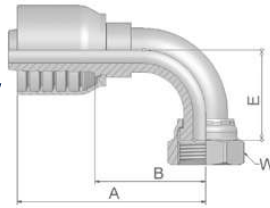


Medium Pressure  
SAE

Parkrimp No-Skive Fittings  
43 Series

**39/3W Female JIC 37°**  
**SAE 45° – Dual Flare**  
**Swivel Female 90° Elbow**  
ISO 12151-5-SWES – DKJ 90°



Part Number	Hose I.D.				Thread UNF	A mm	B mm	E mm	W	
	DN	Inch	Size	mm					mm	Inch
13943-6-6-SM	10	3/8	-6	9,5	9/16x18	57	28	23	19	
13W43-8-6-SM	10	3/8	-6	9,5	3/4x16	64	35	29	22	
13943-10-8-SM*	12	1/2	-8	12,7	7/8x14	74	39	32	27	
13W43-10-10-SM*	16	5/8	-10	15,9	7/8x14	80	40	33	27	
13943-10-10*	16	5/8	-10	15,9	7/8x14	80	40	37	1	
13943-12-12-SM	19	3/4	-12	19,1	1 1/16x12	89	50	48	32	
13943-16-12-SM	19	3/4	-12	19,1	1 5/16x12	89	50	51	41	
13943-16-16-SM	25	1	-16	25,4	1 5/16x12	109	64	55	41	

\* These fittings contain a dual seat that accepts both JIC (37°) and SAE (45°) male configurations.

43 Series

Approved **fitting series** for hose types, depending on size: Also available in stainless steel. Details can be found in CAT 4400.1/UK

<b>43</b>	304	387	387ST	387TC	421WC	426	487	487ST	487TC	722	722CLF	722LT	722TC	722ST	...
	787	787TC	787ST	797	797TC	797ST	881								



Cc-11

Catalogue 4400/UK