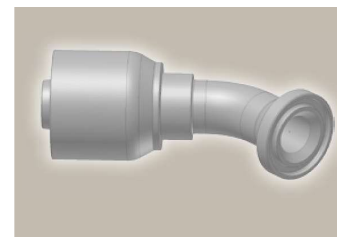
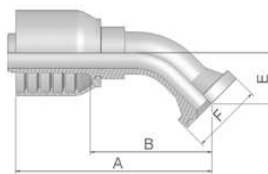


17 ISO 6162-1 Flange 45° Elbow

ISO 12151-3 – E45 – L – SFL 45°
(21.0 MPa/ 3000 psi)



Part Number	 Hose I.D.				 Flange	A mm	B mm	E mm	F mm
	DN	Inch	Size	mm	Inch				
11743-8-8	12	1/2	-8	12,7	1/2	79	44	20	30
11743-12-10	16	5/8	-10	15,9	3/4	96	57	26	38
11743-12-12	19	3/4	-12	19,1	3/4	98	58	26	38
11743-16-16	25	1	-16	25,4	1	119	73	27	45
11743-20-16	25	1	-16	25,4	1 1/4	121	76	32	51

To select corresponding half-flange and O-ring see section Eb.

Approved **fitting series** for hose types, depending on size: Also available in stainless steel. Details can be found in CAT 4400.1/UK

304 387 387ST 387TC 421WC 426 487 487ST 487TC 722 722CLF 722LT 722TC 722ST ...
787 787TC 787ST 797 797TC 797ST 881



Cc-12

Catalogue 4400/UK