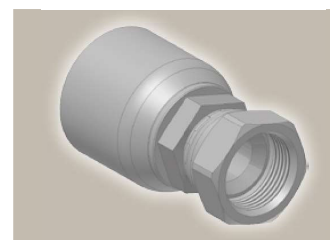
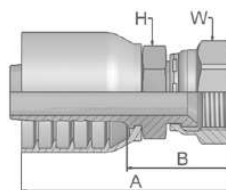


06 Female JIC 37° – Swivel Straight

ISO12151-5-SWS – DKJ



Part Number	 Hose I.D.				 Thread UNF	A mm	B mm	 H mm	 W mm
	DN	Inch	Size	mm					
10670-6-6-SM	10	3/8	-6	9,5	9/16x18	58	29	17	19
10670-8-6-SM	10	3/8	-6	9,5	3/4x16	61	32	19	22
10670-8-8-SM*	12	1/2	-8	12,7	3/4x16	67	32	22	22
10670-12-8-SM	12	1/2	-8	12,7	1 1/16x12	71	36	27	32
10670-10-10-SM	16	5/8	-10	15,9	7/8x14	75	35	24	27
10670-12-10-SM	16	5/8	-10	15,9	1 1/16x12	79	39	27	32
10670-12-12-SM	19	3/4	-12	19,1	1 1/16x12	80	41	27	32
10670-14-12-SM	19	3/4	-12	19,1	1 3/16x12	81	42	32	36
10670-16-12-SM	19	3/4	-12	19,1	1 5/16x12	84	45	32	41
10670-12-16-SM	25	1	-16	25,4	1 1/16x12	89	44	36	32
10670-16-16-SM	25	1	-16	25,4	1 5/16x12	94	47	36	41
10670-20-16-SM	25	1	-16	25,4	1 5/8x12	98	52	41	50

* These fittings contain a dual seat that accepts both JIC (37°) and SAE (45°) male configurations.

70 Series

Approved **fitting series** for hose types, depending on size:

70 | 371LT | 372 | 372RH | 372TC | 701 | 701 TC | F42-8 | SX35



Db-9

Catalogue 4400/UK