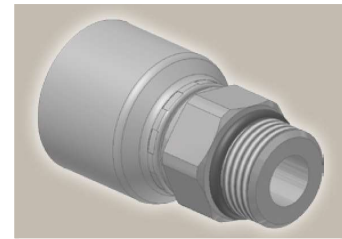
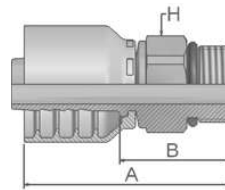


05 Male SAE Straight Thread with O-Ring – Rigid Straight

ISO 11926 – SAE J516



Part Number		Hose I.D.				Thread	A	B	H
46 series	48 series	DN	Inch	Size	mm	UNF	mm	mm	mm
	10548-6-6	10	3/8	-6	9.5	9/16 18	47	24	17
10546-8-6	10548-8-6	10	3/8	-6	9.5	3/4x16	48	25	22
10546-8-8	10548-8-8	12	1/2	-8	12.7	3/4x16	52	28	22
10546-10-8	10548-10-8	12	1/2	-8	12.7	7/8x14	49	26	27

To select corresponding O-ring see section Eb.

Approved **fitting series** for hose types, depending on size: Also available in stainless steel. Details can be found in CAT 4400.1/UK

46 or **48** 441 | 441RH | 461LT | 462 | 462ST | 462CLF | 462TC | 462ST | 629PU | 692PU Twin

46 463 | 492 | 492ST | 492TC | 692 | 692Twin | 692TC | BCH1

48 301SN | 301TC | 304 | 387 | 387ST | 387TC | 421RH | 421SN | 426 | 436 | 441RH | 462PU | 462PU Twin | BCH2 | HT2 | ...

471TC | 477 | 477ST | 477TC | 477RH | 487 | 487ST | 487TC | 493 | 787 | 787TC | 787ST | 797 | 797TC | 797ST | 811 | 881