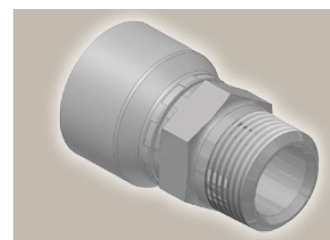
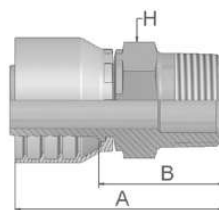


# 01 Male NPTF Pipe Rigid – Straight

SAE J476A / J516 – AGN



Part Number		Hose I.D.				Thread	A	B	H
46 series	48 series	DN	Inch	Size	mm	NPTF	mm	mm	mm
10146-2-4	10148-2-4	6	1/4	-4	6.4	1/8x27	48	24	12
10146-4-4	10148-4-4	6	1/4	-4	6.4	1/4x18	53	29	14
10146-6-4	10148-6-4	6	1/4	-4	6.4	3/8x18	55	31	19
10146-4-5	10148-4-5	8	5/16	-5	7.9	1/4x18	53	29	14
10146-6-5	10148-6-5	8	5/16	-5	7.9	3/8x18	55	31	19
10146-4-6	10148-4-6	10	3/8	-6	9.5	1/4x18	52	29	14
10146-6-6	10148-6-6	10	3/8	-6	9.5	3/8x18	54	31	19
10146-8-6	10148-8-6	10	3/8	-6	9.5	1/2x14	55	32	22
10146-6-8	10148-6-8	12	1/2	-8	12.7	3/8x18	55	32	19
10146-8-8	10148-8-8	12	1/2	-8	12.7	1/2x14	61	38	22
10146-8-10	10148-8-10	16	5/8	-10	15.9	1/2x14	63	38	22
10146-12-10	10148-12-10	16	5/8	-10	15.9	3/4x14	59	34	27
10146-12-12	10148-12-12	19	3/4	-12	19.1	3/4x14	60	34	27
10146-16-16	10148-16-16	25	1	-16	25.4	1x11 1/2	75	45	36
10146-20-20		31	1 1/4	-20	31.8	1 1/4x11 1/2	86	48	46
	10148-20-20	31	1 1/4	-20	31.8	1 1/4x11 1/2	104	57	46
	10148-24-24	38	1 1/2	-24	38.1	1 1/2x11 1/2	89	51	50
	10148-32-32	51	2	-32	50.8	2x11 1/2	104	55	65

Approved **fitting series** for hose types, depending on size: Also available in stainless steel. Details can be found in CAT 4400.1/UK

**46** or **48** 441 | 441RH | 461LT | 462 | 462ST | 462CLF | 462TC | 462ST | 629PU | 692PU Twin

**46** 463 | 492 | 492ST | 492TC | 692 | 692Twin | 692TC | BCH1

**48** 301SN | 301TC | 304 | 387 | 387ST | 387TC | 421RH | 421SN | 426 | 436 | 441RH | 462PU | 462PU Twin | BCH2 | HT2 | ...

471TC | 477 | 477ST | 477TC | 477RH | 487 | 487ST | 487TC | 493 | 787 | 787TC | 787ST | 797 | 797TC | 797ST | 811 | 881