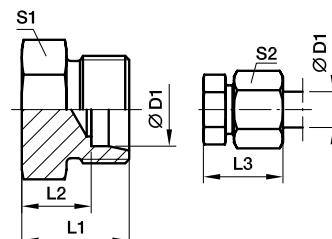




## ROV Blanking plug for tube ends

EO 24° cone end



Series	D1 	L1	L2	L3	S1	S2	Weight g/1 piece	Order code*	PN (bar) <sup>1)</sup>		
									CF	71	
L <sup>3)</sup>	06	14	7.0	22	12	14	8	<b>ROV06L</b>	315	315	
	08	15	8.0	23	14	17	13	<b>ROV08L</b>	315	315	
	10	16	9.0	24	17	19	17	<b>ROV10L</b>	315	315	
	12	17	10.0	25	19	22	24	<b>ROV12L</b>	315	315	
	15	18	11.0	26	24	27	41	<b>ROV15L</b>	315	315	
	18	19	11.5	28	27	32	56	<b>ROV18L</b>	315	315	
	22	21	13.5	30	32	36	84	<b>ROV22L</b>	160	160	
	28	22	14.5	31	41	41	138	<b>ROV28L</b>	160	160	
	35	25	14.5	36	46	50	203	<b>ROV35L</b>	160	160	
	42	27	16.0	39	55	60	318	<b>ROV42L</b>	160	160	
	S <sup>4)</sup>	06	18	11.0	26	14	17	17	<b>ROV06S</b>	630	630
		08	20	13.0	28	17	19	28	<b>ROV08S</b>	630	630
10		20	12.5	29	19	22	33	<b>ROV10S</b>	630	630	
12		22	14.5	31	22	24	50	<b>ROV12S</b>	630	630	
14		24	16.0	34	24	27	62	<b>ROV14S</b>	630	630	
16		24	15.5	34	27	30	75	<b>ROV16S</b>	400	400	
20		28	17.5	39	32	36	125	<b>ROV20S</b>	400	400	
25		32	20.0	44	41	46	229	<b>ROV25S</b>	400	400	
30		34	20.5	47	46	50	310	<b>ROV30S</b>	400	400	
38		39	23.0	54	55	60	508	<b>ROV38S</b>	315	315	

<sup>1)</sup> Pressure shown = item deliverable

<sup>3)</sup> L = light series; <sup>4)</sup> S = heavy series

$\frac{PN(\text{bar})}{10} = PN(\text{MPa})$

Delivery without nut and ring. Information on ordering complete fittings see page I7.

\*Please add the **suffixes** below according to the material/surface required.

Order code suffixes		
Material	Suffix surface and material	Example
Steel, zinc plated, Cr(VI)-free	CFX	ROV16SCFX
Stainless Steel	71X	ROV16S71X

