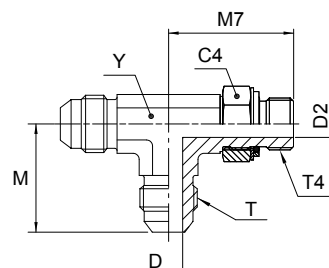


Triple-Lok®

R4OMX Male stud run tee

Triple-Lok® 37° Flare end / Adjustable BSPP thread O-ring + retaining ring (ISO 1179)



| Tube O.D. | | Thread BSPP T4 | Thread UN/UNF-2A T | C4 mm | D mm | D2 mm | M mm | M7 mm | XX mm | Y mm | Weight (steel) g/1 piece | Triple-Lok® Steel | Triple-Lok® Stainless Steel | PN (bar) | |
|------------|-------|----------------|--------------------|-------|------|-------|------|-------|-------|------|--------------------------|-------------------|-----------------------------|----------|-----|
| mm | in. | | | | | | | | | | | | | S | SS |
| 6 | 1/4 | 1/8-28 | 7/16-20 | 14 | 4.4 | 4.4 | 23 | 27 | 17 | 11 | 47 | 4R4OMXS | 4R4OMXS | 250 | 200 |
| 10 | 3/8 | 1/4-19 | 9/16-18 | 19 | 7.5 | 7.5 | 27 | 32 | 19 | 14 | 78 | 6R4OMXS | 6R4OMXS | 250 | 200 |
| 12 | 1/2 | 3/8-19 | 3/4-16 | 22 | 9.9 | 9.9 | 32 | 37 | 24 | 19 | 154 | 8R4OMXS | 8R4OMXS | 250 | 200 |
| 14, 15, 16 | 5/8 | 1/2-14 | 7/8-14 | 27 | 12.3 | 12.3 | 37 | 43 | 27 | 22 | 231 | 10R4OMXS | 10R4OMXS | 250 | 200 |
| 18, 20 | 3/4 | 3/4-14 | 1 1/16-12 | 36 | 15.5 | 15.5 | 42 | 50 | 34 | 27 | 379 | 12R4OMXS | 12R4OMXS | 250 | 200 |
| 25 | 1 | 1-11 | 1 5/16-12 | 41 | 21.5 | 21.5 | 46 | 52 | 34 | 33 | 569 | 16R4OMXS | 16R4OMXS | 250 | 200 |
| 28, 30, 32 | 1 1/4 | 1 1/4-11 | 1 5/8-12 | 50 | | | | | | | 1075 | 20R4OMXS | 20R4OMXS | 210 | 160 |

Steel, stainless steel and brass Triple-Lok® parts are delivered with NBR elastomeric seals as standard. For more details on other seal materials see page K92.

Order codes shown are part of our current manufacturing programme.

Imperial and metric parts may vary in hexagon dimensions.

$$\frac{\text{PN (bar)}}{10} = \text{PN (MPa)}$$

Do not create drawings from these dimensions, they are subject to change and ISO manufacturing allowances.