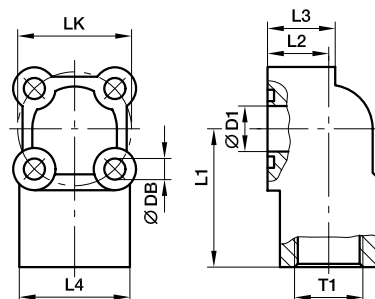




## SAE Gear pump flanges

### PWDS-G Gear pump flange 90° elbow 4 holes – aluminium

Hydraulic flange / Female BSPP thread  
(ISO 1179-1)



#### PWDS-G 90° Female BSPP thread

LK	T1	D1	L1	L2	L3	L4	DB	Screws		O-ring	Weight (steel) kg/piece	Order code*	PN (bar) <sup>1)</sup>	
								2 pieces (metr.)	2 pieces (metr.)				A	
30	<b>G 3/8</b>	11.5	39.0	18	20	33	6.5	M 06×30	M 06×40	15.88×2.62	0.09	<b>PWDS-G38/LK30</b>	180	
30	<b>G 1/2</b>	11.5	39.0	18	20	33	6.5	M 06×30	M 06×40	15.88×2.62	0.09	<b>PWDS-G12/LK30</b>	180	
35	<b>G 3/8</b>	14.0	42.5	18	20	34	6.5	M 06×30	M 06×40	18.72×2.62	0.11	<b>PWDS-G38/LK35</b>	180	
35	<b>G 1/2</b>	14.0	42.5	18	20	34	6.5	M 06×30	M 06×40	18.72×2.62	0.11	<b>PWDS-G12/LK35</b>	180	
40	<b>G 1/2</b>	18.0	47.5	24	28	41	6.5	M 06×40	M 06×50	22.22×2.62	0.18	<b>PWDS-G12/LK40</b>	180	
40	<b>G 3/4</b>	18.0	47.5	24	28	41	6.5	M 06×40	M 06×50	22.22×2.62	0.18	<b>PWDS-G34/LK40</b>	180	
55	<b>G 3/4</b>	24.5	54.0	29	31	49	8.5	M 08×45	M 08×60	29.75×3.53	0.31	<b>PWDS-G34/LK55</b>	180	
55	<b>G 1</b>	24.5	54.0	29	31	49	8.5	M 08×45	M 08×60	29.75×3.53	0.30	<b>PWDS-G1/LK55</b>	180	

<sup>1)</sup> Pressure shown = Item deliverable

$$\frac{\text{PN (bar)}}{10} = \text{PN (MPa)}$$

**N**

\*Please add the **suffixes** below according to the material/surface required.

Order code suffixes			
Material	Suffix surface and material	Example incl. metr. screws and O-ring	Standard sealing material (no additional suffix needed)
Aluminium	A	PWDS-G38/LK30AM	NBR

