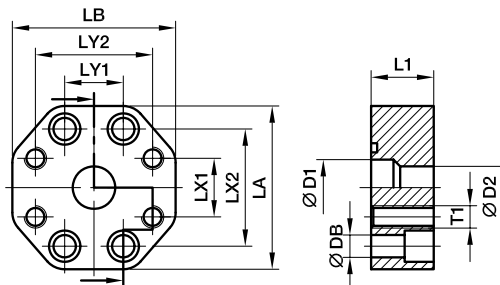




## SAE 4 Flange accessories

### PRF SAE Straight reducing flange adapter

ISO 6162-1/-2



#### 3000 PSI Series

Nom. flange size												Screws		Weight (steel) kg/piece	Order code*	PN (bar) <sup>1)</sup> S
SAE (in.)	ISO (DN)	D1	D2	L1	LA	LB	LX1	LX2	LY1	LY2	DB	(metr.)	T1			
1x1	25/25	25	25	28	73	73	26.2	52.4	26.2	52.4	11	M 10x35	<b>M10</b>	1.10	<b>PRF102/102</b>	210
1x3/4	25/19	25	19	28	73	73	22.3	52.4	26.2	47.6	11	M 10x35	<b>M10</b>	1.15	<b>PRF102/100</b>	210
1 1/4x1 1/4	32/32	30	30	28	80	80	30.2	58.7	30.2	58.7	11	M 10x35	<b>M10</b>	1.55	<b>PRF104/104</b>	210
1 1/4x1	32/25	30	25	28	80	71	26.2	58.7	30.2	52.4	11	M 10x35	<b>M10</b>	1.55	<b>PRF104/102</b>	210
1 1/2x1 1/2	38/38	38	38	32	94	94	35.7	69.9	35.7	69.9	13	M 12x45	<b>M12</b>	2.25	<b>PRF106/106</b>	210
1 1/2x1 1/4	38/32	38	30	32	94	80	30.2	69.9	35.7	58.7	13	M 10x35	<b>M10</b>	2.40	<b>PRF106/104</b>	210
2x2	51/51	50	50	33	103	103	42.9	77.8	42.9	77.8	13	M 12x45	<b>M12</b>	3.00	<b>PRF108/108</b>	210
2x1 1/2	51/38	50	38	33	103	94	35.7	77.8	42.9	70.0	13	M 12x45	<b>M12</b>	3.15	<b>PRF108/106</b>	210
2 1/2x2 1/2	64/64	63	63	33	115	115	50.8	88.9	50.8	88.9	13	M 12x45	<b>M12</b>	3.85	<b>PRF110/110</b>	175
2 1/2x2	64/51	63	50	33	115	103	42.9	88.9	50.8	77.8	13	M 12x45	<b>M12</b>	3.95	<b>PRF110/108</b>	175
3x3	76/76	73	73	36	135	135	61.9	106.4	61.9	106.4	17	M 16x50	<b>M16</b>	4.25	<b>PRF112/112</b>	138
3x2 1/2	76/64	73	63	36	135	115	50.8	106.4	61.9	89.0	17	M 12x45	<b>M12</b>	4.45	<b>PRF112/110</b>	138

#### 6000 PSI Series

3/4x3/4	19/19	19	19	28	71	71	23.8	50.8	23.8	50.8	11	M 10x35	<b>M10</b>	0.80	<b>PRF402/402</b>	420
1x1	25/25	25	25	33	80	80	27.8	57.2	27.8	57.2	13	M 12x45	<b>M12</b>	1.10	<b>PRF403/403</b>	420
1x3/4	25/19	25	19	33	80	71	23.8	57.2	27.8	50.8	13	M 10x35	<b>M10</b>	1.10	<b>PRF403/402</b>	420
1 1/4x1 1/4	32/32	30	30	33	94	94	31.8	66.6	31.8	66.6	15	M 14x45	<b>M14</b>	1.40	<b>PRF404/404</b>	420
1 1/4x1	32/25	30	25	33	94	80	27.8	66.6	31.8	57.2	15	M 12x45	<b>M12</b>	1.60	<b>PRF404/403</b>	420
1 1/2x1 1/2	38/38	38	38	48	106	106	36.5	79.3	36.5	79.3	17	M 16x50	<b>M16</b>	3.30	<b>PRF405/405</b>	420
1 1/2x1 1/4	38/32	38	30	48	106	94	31.8	79.3	36.5	66.6	17	M 14x45	<b>M14</b>	3.60	<b>PRF405/404</b>	420
2x2	51/51	50	50	48	135	135	44.5	96.8	44.5	96.8	21	M 20x65	<b>M20</b>	5.00	<b>PRF406/406</b>	420
2x1 1/2	51/38	50	38	48	135	106	36.5	96.8	44.5	79.3	21	M 16x50	<b>M16</b>	5.25	<b>PRF406/405</b>	420
2 1/2x2	64/64	63	63	53	166	166	44.5	123.8	58.7	96.8	25	M 20x65	<b>M20</b>	6.50	<b>PRF408/408</b>	420
3x2	76/51	73	50	58	208	178	44.5	152.4	71.4	96.8	31	M 20x65	<b>M20</b>	7.50	<b>PRF410/406</b>	420

<sup>1)</sup> Pressure shown = Item deliverable

PN (bar) = PN (MPa)  
10

\*Please add the suffixes below according to the material/surface required.

Order code suffixes			
Material	Suffix surface and material	Example	Description
Steel, blanc oil dipped	S	PRF102/102S	only flange
Stainless steel	SS	PRF102/102SS	only flange

