

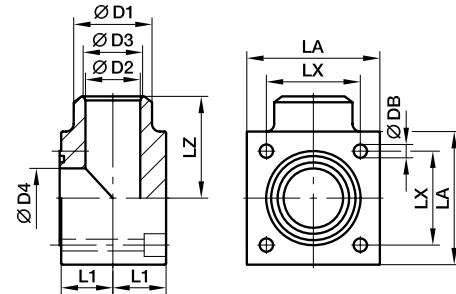


## Cetop square flanges

### PLCF-B Cetop square flange 90° elbow connection

Cetop square flange 90° elbow / Butt weld end

\*Do not use for new designs



#### 250 bar Series

Nom. flange size		D1								Screws		Weight	Order code*	PN (bar) <sup>1)</sup> S	
Series <sup>2)</sup>	(in.)	⊕	D2	D3	D4	L1	LA	LX	LZ	DB	(metr.)	O-ring			kg/piece
L	3/8	18	12	12	12.5	12	40	24.7	32	6.5	M 06×30	17.13×2.62	0.44	<b>PLCF38/L/18B</b>	250
L	1/2	22	14	14	15.0	17	45	29.7	40	8.5	M 08×40	18.64×3.53	0.57	<b>PLCF12/L/22B</b>	250
L	3/4	28	19	19	20.0	19	50	35.3	42	8.5	M 08×45	24.99×3.53	0.83	<b>PLCF34/L/28B</b>	250
L	1	35	23	23	25.0	24	65	43.8	50	10.5	M 10×55	32.93×3.53	1.64	<b>PLCF1/L/35B</b>	250
L	1 1/4	44	30	30	32.0	30	75	51.6	56	13.0	M 12×70	37.89×3.53	2.39	<b>PLCF114/L/44B</b>	250
L	1 1/2	50	35	38	38.0	34	85	60.0	65	15.0	M 14×80	47.22×3.53	3.48	<b>PLCF112/L/50B</b>	250
L	2	63	43	47	47.0	42	100	69.4	75	17.0	M 16×100	56.74×3.53	5.98	<b>PLCF2/L/63B</b>	250
L	2 1/2	86	53	58	58.0	53	120	83.4	85	21.0	M 20×120	69.44×3.53	10.40	<b>PLCF212/L/86B</b>	250
L	3	90	65	70	70.0	59	140	102.5	100	21.0	M 20×140	85.32×3.53	15.68	<b>PLCF3/L/90B</b>	250
L	4	114	80	90	90.0	65	160	113.2	110	25.0	M 24×140	97.79×5.34	19.66	<b>PLCF4/L/114B</b>	250

#### 400 bar Series

S	3/8	18	12	12	12.5	12	40	24.7	32	6.5	M 06×30	17.13×2.62	0.52	<b>PLCF38/S/18B</b>	400
S	1/2	22	14	14	15.0	17	45	29.7	40	8.5	M 08×40	18.64×3.53	0.81	<b>PLCF12/S/22B</b>	400
S	3/4	28	19	19	20.0	19	50	35.3	42	8.5	M 08×45	24.99×3.53	1.17	<b>PLCF34/S/28B</b>	400
S	1	35	23	23	25.0	24	65	43.8	50	10.5	M 10×55	32.93×3.53	2.16	<b>PLCF1/S/35B</b>	400
S	1 1/4	44	30	30	32.0	30	75	51.6	56	13.0	M 12×70	37.89×3.53	3.09	<b>PLCF114/S/44B</b>	400
S	1 1/2	51	32	35	38.0	34	85	60.0	65	15.0	M 14×80	47.22×3.53	4.68	<b>PLCF112/S/51B</b>	400
S	2	63	38	43	47.0	42	100	69.4	75	17.0	M 16×100	56.74×3.53	8.01	<b>PLCF2/S/63B</b>	400
S	2 1/2	80	48	53	58.0	53	120	83.4	85	21.0	M 20×120	69.22×5.34	13.36	<b>PLCF212/S/80B</b>	400
S	3	90	58	58	58.0	59	140	102.5	100	21.0	M 20×140	75.57×5.34	19.08	<b>PLCF3/S/90B</b>	400

<sup>1)</sup> Pressure shown = Item deliverable

<sup>2)</sup> L = light series; S = heavy series

$$\frac{\text{PN (bar)}}{10} = \text{PN (MPa)}$$

The pressures given here are the maximum allowable for the flange fittings. If the pipe or tube used has a lower pressure rating, then the welded assembly rating will be the lower one, assuming the weld is adequately strong.

\*Please add the suffixes below according to the material/surface required.

Order code suffixes			
Material	Suffix surface and material	Example incl. metr. screws and O-ring	Standard sealing material (no additional suffix needed)
Steel, blanc oil dipped	S	PLCF38/L/18BSM	NBR

