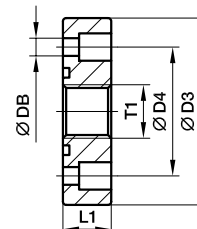


SAE Gear pump flanges



PF Gear pump flange straight

Hydraulic flange / Female BSPP thread
(ISO 1179-1)

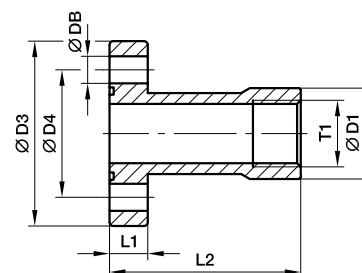


PF

Pump size	LK	T1	D3	D4	L1	DB	Screws (metr.)	O-ring	Weight (steel) kg/piece	Order code*	PN (bar) ¹⁾ CF
1.0	30.0	G 3/8	45	30.0	13	6.5	M 06×16	18.77×1.78	0.10	PF1	250
2.0	40.0	G 1/2	58	40.0	15	8.5	M 08×20	25.12×1.78	0.21	PF2	250
3.0	51.0	G 3/4	75	51.0	18	10.5	M 10×25	31.42×2.62	0.48	PF3	250
3B	56.0	G 3/4	76	56.0	18	10.5	M 10×25	31.42×2.62	0.48	PF3B	250
3.5	62.0	G 1	88	62.0	20	10.5	M 10×25	39.69×3.53	0.53	PF3.5	180
3.5B	62.0	G 1	88	62.0	20	12.5	M 12×25	39.69×3.53	0.59	PF3.5B	180
4.0	72.5	G 1 1/4	98	72.5	22	12.5	M 12×30	47.22×3.53	0.64	PF4	180

PFL Gear pump flange straight

Hydraulic flange / Female BSPP thread – long version
(ISO 1179-1)



PFL

Pump size	LK	T1	D1	D3	D4	L1	L2	DB	Screws (metr.)	O-ring	Weight (steel) kg/piece	Order code*	PN (bar) ¹⁾ CF
1.0	30.0	G 3/8	23.0	45	30.0	10	55	6.5	M 06×20	18.77×1.78	0.15	PFL1	250
2.0	40.0	G 1/2	26.5	58	40.0	12	60	8.5	M 08×25	25.12×1.78	0.27	PFL2	250
3.0	51.0	G 3/4	33.5	76	51.0	16	72	10.5	M 10×35	31.42×2.62	0.59	PFL3	250
3B	56.0	G 3/4	33.5	76	56.0	19	72	10.5	M 10×35	31.42×2.62	0.69	PFL3.5	250

¹⁾ Pressure shown = Item deliverable

$$\frac{\text{PN (bar)}}{10} = \text{PN (MPa)}$$

*Please add the **suffixes** below according to the material/surface required.

Order code suffixes			
Material	Suffix surface and material	Example incl. metr. screws and O-ring	Standard sealing material (no additional suffix needed)
Steel, zinc plated, Cr(VI)-free PF	CF	PF1CFM	NBR
Steel, zinc plated, Cr(VI)-free PFL	CF	PFL1CFM	NBR

