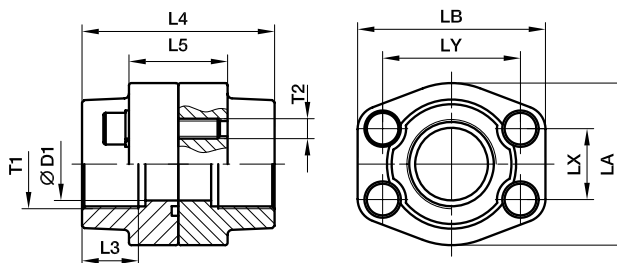




## SAE 4 Bolt flanges

### PDFS-G SAE Straight 4 bolt flange connection

SAE Flange / Female BSPP thread  
(ISO 6162-1/-2) (ISO 1179-1)



#### 3000 PSI Series

Nom. flange size		T1	D1	L3	L4	L5	LA	LB	LX	LY	T2		Weight (steel) kg/piece	Order code*	PN (bar) <sup>1)</sup>	
SAE (in.)	ISO (DN)										(metr.)	(unc.)			S	SS
1/2	13	<b>G 3/8</b>	13	19	72	32	47	57	17.5	38.1	M 8	5/16	0.50	<b>PDFS080G38</b>	345	345
1/2	13	<b>G 1/2</b>	13	19	72	32	47	57	17.5	38.1	M 8	5/16	0.56	<b>PDFS080G</b>	345	345
3/4	19	<b>G 3/4</b>	19	19	72	36	49	66	22.3	47.6	M10	3/8	0.78	<b>PDFS100G</b>	345	345
1	25	<b>G 1</b>	25	19	76	36	53	71	26.2	52.4	M10	3/8	0.92	<b>PDFS102G</b>	345	345
1 1/4	32	<b>G 1 1/4</b>	31	22	82	42	69	80	30.2	58.7	M10	7/16	1.32	<b>PDFS104G</b>	276	276
1 1/2	38	<b>G 1 1/2</b>	38	24	88	48	77	94	35.7	69.9	M12	1/2	2.10	<b>PDFS106G</b>	207	207
2	51	<b>G 2</b>	50	26	90	48	89	103	42.9	77.8	M12	1/2	2.38	<b>PDFS108G</b>	207	207
2 1/2	64	<b>G 2 1/2</b>	63	30	100	48	101	115	50.8	88.9	M12	1/2	2.80	<b>PDFS110G</b>	172	172
3	76	<b>G 3</b>	73	34	100	53	124	135	61.9	106.4	M16	5/8	4.30	<b>PDFS112G</b>	138	138
3 1/2	89	<b>G 3 1/2</b>	89	27	100	54	136	152	69.9	120.7	M16	5/8	4.80	<b>PDFS114G</b>	34	34
4	102	<b>G 4</b>	99	30	100	54	146	162	77.8	130.2	M16	5/8	5.70	<b>PDFS116G</b>	34	34
5	127	<b>G 5</b>	120	30	100	54	180	184	92.1	152.4	M16	5/8	6.60	<b>PDFS118G</b>	34	34

#### 6000 PSI Series

1/2	13	<b>G 3/8</b>	13	19	72	32	47	57	18.2	40.5	M 8	5/16	0.52	<b>PDFS401G38</b>	420	420
1/2	13	<b>G 1/2</b>	13	19	72	32	47	57	18.2	40.5	M 8	5/16	0.58	<b>PDFS401G</b>	420	420
3/4	19	<b>G 3/4</b>	19	22	72	38	53	71	23.8	50.8	M10	3/8	1.00	<b>PDFS402G</b>	420	420
1	25	<b>G 1</b>	25	24	88	48	69	80	27.8	57.2	M12	7/16	1.52	<b>PDFS403G</b>	420	420
1 1/4	32	<b>G 1 1/4</b>	31	25	88	54	77	94	31.8	66.6	M14	1/2	2.40	<b>PDFS404G</b>	420	420
1 1/2	38	<b>G 1 1/2</b>	38	28	102	60	89	106	36.5	79.3	M16	5/8	3.30	<b>PDFS405G</b>	420	420
2	51	<b>G 2</b>	50	33	140	74	116	135	44.5	96.8	M20	3/4	4.90	<b>PDFS406G</b>	420	420
2 1/2	64	<b>G 2 1/2</b>	63	35	150	90	150	166	58.7	123.8	M24	-	6.50	<b>PDFS407G</b>	420	420
3	76	<b>G 3</b>	73	40	180	110	178	208	71.4	152.4	M30	-	8.00	<b>PDFS408G</b>	420	420

<sup>1)</sup> Pressure shown = Item deliverable

PN (bar) = PN (MPa) / 10

\*Please add the suffixes below according to the material/surface required.

Order code suffixes				
Material	Suffix surface and material	Example 4 bolt flange coupling incl. metr. screws and O-ring	Example 4 bolt flange coupling incl. UNC screws and O-ring	Standard sealing material (no additional suffix needed)
Steel, blanc oil dipped	S	PDFS080GS	PDFS080GSU	NBR
Stainless steel	SS	PDFS080GSS	-	VIT

