

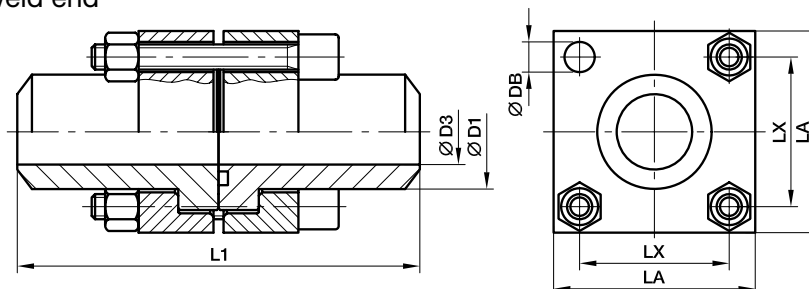


## Cetop square flanges

### PDCF-B Cetop square flange coupling

Cetop square flange / Butt weld end

\*Do not use for new designs



#### 250 bar Series

Nom. flange size		D1					Screws		Weight		PN
Series <sup>2)</sup>	(in.)	⌀	D3	L1	LA	LX	(metr.)	O-ring	(steel)	Order code*	(bar) <sup>1)</sup>
L	3/8	18	12.5	80	40	24.7	M 06×35	17.13×2.62	0.43	<b>PDCF38/L/18B</b>	250
L	1/2	22	14.0	90	45	29.7	M 08×40	18.64×3.53	0.55	<b>PDCF12/L/22B</b>	250
L	3/4	28	20.0	100	50	35.3	M 08×45	24.99×3.53	0.80	<b>PDCF34/L/28B</b>	250
L	1	35	25.0	110	65	43.8	M 10×50	32.93×3.53	1.58	<b>PDCF1/L/35B</b>	250
L	1 1/4	43	31.0	120	75	51.6	M 12×60	37.89×3.53	2.30	<b>PDCF114/L/43B</b>	250
L	1 1/2	50	38.0	130	85	60.0	M 14×70	47.22×3.53	3.35	<b>PDCF112/L/50B</b>	250
L	2	62	47.0	140	100	69.4	M 16×80	56.74×3.53	5.75	<b>PDCF2/L/62B</b>	250
L	2 1/2	76	58.0	150	120	83.4	M 20×100	69.44×3.53	10.00	<b>PDCF212/L/76B</b>	250
L	3	90	70.0	170	140	102.5	M 20×110	85.32×3.53	15.08	<b>PDCF3/L/90B</b>	250
L	3 1/2	102	80.0	180	140	102.5	M 20×130	85.09×5.35	18.90	<b>PDCF312/L/102B</b>	250
L	4	114	90.0	210	160	113.2	M 24×150	97.79×5.34	27.40	<b>PDCF4/L/114B</b>	250

#### 400 bar Series

S	3/8	18	11.0	80	40	24.7	M 06×40	17.13×2.62	0.50	<b>PDCF38/S/18B</b>	400
S	1/2	22	14.0	90	45	29.7	M 08×45	18.64×3.53	0.78	<b>PDCF12/S/22B</b>	400
S	3/4	28	18.0	100	50	35.3	M 08×50	24.99×3.53	1.13	<b>PDCF34/S/28B</b>	400
S	1	35	22.0	110	65	43.8	M 10×60	32.93×3.53	2.08	<b>PDCF1/S/35B</b>	400
S	1 1/4	44	29.0	120	75	51.6	M 12×70	37.89×3.53	2.98	<b>PDCF114/S/44B</b>	400
S	1 1/2	51	35.0	130	85	60.0	M 14×80	47.22×3.53	4.50	<b>PDCF112/S/51B</b>	400
S	2	61	43.0	140	100	69.4	M 16×100	56.74×3.53	7.70	<b>PDCF2/S/61B</b>	400
S	2 1/2	80	53.0	160	120	83.4	M 20×120	69.22×5.34	12.85	<b>PDCF212/S/80B</b>	400
S	3	90	58.0	180	140	102.5	M 20×130	75.57×5.34	18.35	<b>PDCF3/S/90B</b>	400
S	3 1/2	102	63.0	180	140	102.5	M 20×130	85.09×5.34	20.23	<b>PDCF312/S/102B</b>	400
S	4	114	74.0	210	160	113.2	M 24×150	88.27×5.34	31.88	<b>PDCF4/S/114B</b>	400

<sup>1)</sup> Pressure shown = Item deliverable

<sup>2)</sup> L = light series; S = heavy series

$\frac{PN \text{ (bar)}}{10} = PN \text{ (MPa)}$

The pressures given here are the maximum allowable for the flange fittings. If the pipe or tube used has a lower pressure rating, then the welded assembly rating will be the lower one, assuming the weld is adequately strong.

\*Please add the **suffixes** below according to the material/surface required.

Order code suffixes			
Material	Suffix surface and material	Example Flange coupling incl. flange clamps, metr. screws and O-ring	Standard sealing material (no additional suffix needed)
Steel, blanc oil dipped	S	PDCF38/L/18BS	NBR

