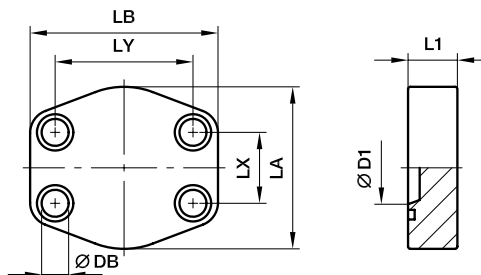


SAE 4 Flange accessories



PCFF SAE Closed flange

SAE Closed flange
(ISO 6162-1/-2)



3000 PSI Series

Nom. flange size										Screws		Weight (steel) kg/piece	Order code*	PN (bar) ¹⁾	
SAE (in.)	ISO (DN)	D1	L1	LA	LB	LX	LY	DB	(metr.)	(unc.)	S			SS	
1/2	13	13	16	46	58	17.5	38.1	9.0	M 08×30	5/16×1 1/4	0.30	PCFF32	345	345	
3/4	19	15	18	49	66	22.3	47.6	10.5	M 10×35	3/8×1 1/2	0.37	PCFF33	345	345	
1	25	18	19	53	71	26.2	52.4	10.5	M 10×35	3/8×1 1/2	0.54	PCFF34	345	345	
1 1/4	32	23	21	69	80	30.2	58.7	10.5	M 10×40	7/16×1 1/2	0.90	PCFF35	276	276	
1 1/2	38	28	24	77	95	35.7	69.9	13.5	M 12×45	1/2×1 3/4	1.03	PCFF36	207	207	
2	51	45	24	89	103	42.9	77.8	13.5	M 12×45	1/2×1 3/4	1.30	PCFF38	207	207	
2 1/2	64	58	25	101	116	50.8	88.9	13.5	M 12×45	1/2×1 3/4	1.45	PCFF310	172	172	
3	76	70	25	124	136	61.9	106.4	17.0	M 16×55	5/8×2 1/4	2.72	PCFF312	138	138	
3 1/2	89	85	25	136	152	69.9	120.7	17.0	M 16×55	5/8×2 1/4	2.90	PCFF314	34	34	
4	102	95	25	146	162	77.8	130.2	17.0	M 16×55	5/8×2 1/4	3.85	PCFF316	34	34	
5	127	110	25	180	184	92.1	152.4	17.0	M 16×55	5/8×2 1/4	4.20	PCFF320	34	34	

6000 PSI Series

1/2	13	13	16	46	58	18.2	40.5	9.0	M 08×30	5/16×1 1/4	0.30	PCFF62	420	420
3/4	19	15	19	53	71	23.8	50.8	10.5	M 10×35	3/8×1 1/2	0.44	PCFF63	420	420
1	25	22	24	66	80	27.8	57.2	13.5	M 12×45	7/16×1 1/2	0.73	PCFF64	420	420
1 1/4	32	30	27	77	94	31.8	66.6	15.0	M 14×50	1/2×1 3/4	0.85	PCFF65	420	420
1 1/2	38	35	30	89	103	36.5	79.3	17.0	M 16×55	5/8×2 1/4	1.61	PCFF66	420	420
2	51	48	35	123	135	44.5	96.8	21.0	M 20×70	3/4×2 3/4	3.31	PCFF68	420	420
2 1/2	64	55	45	150	166	58.7	123.8	25.0	M 24×90	–	4.50	PCFF610	420	420
3	76	65	55	178	208	71.4	152.4	32.0	M 30×110	–	5.30	PCFF612	420	420

¹⁾ Pressure shown = Item deliverable

$\frac{PN \text{ (bar)}}{10} = PN \text{ (MPa)}$

*Please add the **suffixes** below according to the material/surface required.

Order code suffixes					
Material	Suffix surface and material	Example only closed flange	Example closed flange incl. metr. screws and O-ring	Example closed flange incl. UNC screws and O-ring	Standard sealing material (no additional suffix needed)
Steel, blanc oil dipped	S	PCFF32S	PCFF32SM	PCFF32SU	NBR
Stainless steel	SS	PCFF32SS	PCFF32SSM	–	VIT

