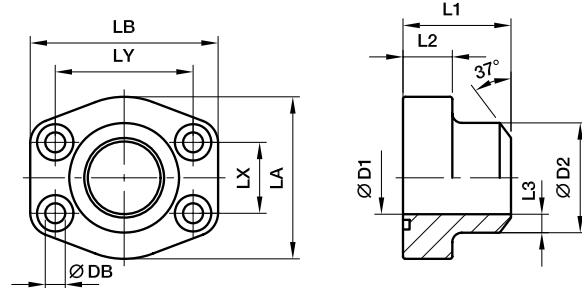




SAE 4 Bolt flanges

PAFS-B SAE Straight 4 bolt flange (butt weld)

SAE Flange / Butt weld tube end
(ISO 6162-1/-2)



3000 PSI Series

Nom. flange size		Screws	Weight (steel) kg/piece	Order code*	PN (bar) ¹⁾	
SAE (in.)	ISO (DN)				(metr.)	(unc.)
1/2	13	M 08×30	0.28	PAFS080B	345	345
3/4	19	M 10×35	0.39	PAFS100B	345	345
1	25	M 10×35	0.46	PAFS102B	345	345
1 1/4	32	M 10×40	0.66	PAFS104B	276	276
1 1/2	38	M 12×45	1.05	PAFS106B	207	207
2	51	M 12×45	1.19	PAFS108B	207	207
2 1/2	64	M 12×45	1.40	PAFS110B	172	172
3	76	M 16×55	2.15	PAFS112B	138	138
3 1/2	89	M 16×55	2.40	PAFS114B	34	34
4	102	M 16×55	2.85	PAFS116B	34	34
5	127	M 16×55	4.85	PAFS118B	34	34

6000 PSI Series

1/2	13	M 08×30	0.26	PAFS401B38	420	420
1/2	13	M 08×30	0.29	PAFS401B	420	420
3/4	19	M 10×35	0.50	PAFS402B	420	420
1	25	M 12×45	0.76	PAFS403B	420	420
1 1/4	32	M 14×50	1.35	PAFS404B	420	420
1 1/2	38	M 16×55	1.80	PAFS405B	420	420
2	51	M 20×70	2.45	PAFS406B	420	420
2 1/2	64	M 24×90	6.25	PAFS407B	420	420
3	76	M 30×110	8.10	PAFS408B	420	420

¹⁾Pressure shown = Item deliverable

$$\frac{\text{PN (bar)}}{10} = \text{PN (MPa)}$$

The pressures given here are the maximum allowable for the flange fittings. If the pipe or tube used has a lower pressure rating, then the welded assembly rating will be the lower one, assuming the weld is adequately strong.

*Please add the suffixes below according to the material/surface required.

Order code suffixes					
Material	Suffix surface and material	Example only 4 bolt flange	Example 4 bolt flange incl. metr. screws and O-ring	Example 4 bolt flange incl. UNC screws and O-ring	Standard sealing material (no additional suffix needed)
Steel, blanc oil dipped	S	PAFS080BS	PAFS080BSM	PAFS080BSU	NBR
Stainless steel	SS	PAFS080BSS	PAFS080BSSM	–	VIT

