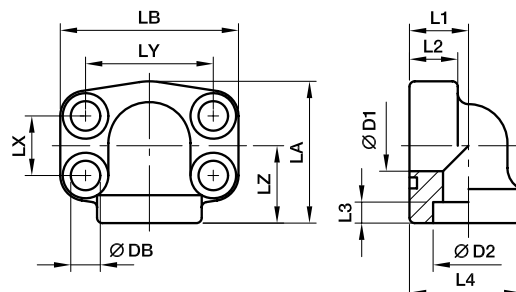




## SAE 4 Bolt flanges

### PAFS-90S SAE 90° 4 bolt flange (socket weld)

SAE 90° Flange / Socket weld tube end  
(ISO 6162-1/-2)



#### 3000 PSI Series

Nom. flange size		Screws	Weight (steel) kg/piece	Order code*	PN (bar) <sup>1)</sup>	
SAE (in.)	ISO (DN)				(metr.)	(unc.)
1/2	13	M 08×30	0.35	PAFS080/90S21.6	345	345
3/4	19	M 10×35	0.55	PAFS100/90S27.2	345	345
1	25	M 10×35	0.80	PAFS102/90S34.1	345	345
1 1/4	32	M 10×40	1.30	PAFS104/90S42.8	276	276
1 1/2	38	M 12×45	1.60	PAFS106/90S48.6	207	207
2	51	M 12×45	2.00	PAFS108/90S61	207	207
2 1/2	64	M 12×45	2.60	PAFS110/90S76.6	172	172

#### 6000 PSI Series

1/2	13	M 08×30	0.35	PAFS401/90S21.6	420	420
3/4	19	M 10×35	0.80	PAFS402/90S27.2	420	420
1	25	M 12×50	1.30	PAFS403/90S34.1	420	420
1 1/4	32	M 14×45	1.60	PAFS404/90S42.8	420	420
1 1/2	38	M 16×55	2.00	PAFS405/90S48.6	420	420
2	51	M 20×70	2.50	PAFS406/90S61	420	420

<sup>1)</sup>Pressure shown = Item deliverable

$$\frac{\text{PN (bar)}}{10} = \text{PN (MPa)}$$

The pressures given here are the maximum allowable for the flange fittings. If the pipe or tube used has a lower pressure rating, then the welded assembly rating will be the lower one, assuming the weld is adequately strong.

\*Please add the **suffixes** below according to the material/surface required.

Order code suffixes					
Material	Suffix surface and material	Example only 4 bolt flange	Example 4 bolt flange incl. metr. screws and O-ring	Example 4 bolt flange incl. UNC screws and O-ring	Standard sealing material (no additional suffix needed)
Steel, blanc oil dipped	S	PAFS080/90S21.6S	PAFS080/90S21.6SM	PAFS080/90S21.6SU	NBR
Stainless steel	SS	PAFS080/90S21.6SS	PAFS080/90S21.6SSM	-	VIT

