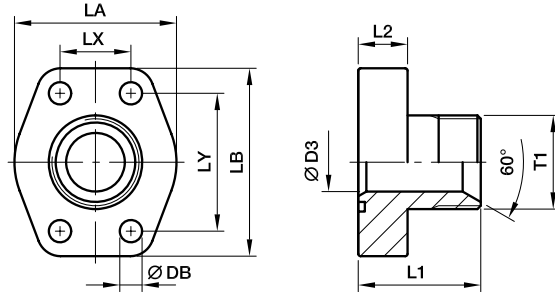




SAE 4 Bolt flanges

PAFG-G SAE Straight 4 bolt flange with BSPP 60° cone end

SAE Flange / BSPP 60° cone end
(ISO 6162-1/-2) (ISO 8434-6)



3000 PSI Series

Nom. flange size		T1	D3	L1	L2	LA	LB	LX	LY	DB	Screws		Weight (steel) kg/piece	Order code*	PN (bar) ¹⁾	
SAE (in.)	ISO (DN)										(metr.)	(unc.)			CF	SS
1/2	13	G 3/8	10	37	16	47	56	17.5	38.1	9.0	M 08×30	5/16×1 1/4	0.25	PAFG080G38	348	348
1/2	13	G 1/2	12	39	16	47	56	17.5	38.1	9.0	M 08×30	5/16×1 1/4	0.29	PAFG080G	348	348
1/2	13	G 3/4	13	42	16	47	56	17.5	38.1	9.0	M 08×30	5/16×1 1/4	0.32	PAFG080G34	348	348
3/4	19	G 1/2	12	42	18	50	66	22.3	47.6	11.0	M 10×35	3/8×1 1/2	0.35	PAFG100G12	348	348
3/4	19	G 3/4	17	45	18	50	66	22.3	47.6	11.0	M 10×35	3/8×1 1/2	0.34	PAFG100G	348	348
3/4	19	G 1	19	47	18	50	66	22.3	47.6	11.0	M 10×35	3/8×1 1/2	0.37	PAFG100G1	348	348
1	25	G 3/4	17	47	18	53	71	26.2	52.4	11.0	M 10×35	3/8×1 1/2	0.44	PAFG102G34	348	348
1	25	G 1	22	49	18	53	71	26.2	52.4	11.0	M 10×35	3/8×1 1/2	0.46	PAFG102G	348	348
1	25	G 1 1/4	25	49	18	53	71	26.2	52.4	11.0	M 10×35	3/8×1 1/2	0.50	PAFG102G114	348	348
1 1/4	32	G 1	22	53	21	69	80	30.2	58.7	11.5	M 10×40	7/16×1 1/2	0.65	PAFG104G1	278	278
1 1/4	32	G 1 1/4	27	53	21	69	80	30.2	58.7	11.5	M 10×40	7/16×1 1/2	0.70	PAFG104G	278	278
1 1/4	32	G 1 1/2	31	55	21	69	80	30.2	58.7	11.5	M 10×40	7/16×1 1/2	0.72	PAFG104G112	278	278
1 1/2	38	G 1 1/4	27	59	24	77	94	35.7	69.9	13.5	M 12×45	1/2×1 3/4	1.00	PAFG106G114	210	210
1 1/2	38	G 1 1/2	34	61	24	77	94	35.7	69.9	13.5	M 12×45	1/2×1 3/4	1.00	PAFG106G	210	210
1 1/2	38	G 2	38	63	24	77	94	35.7	69.9	13.5	M 12×45	1/2×1 3/4	1.02	PAFG106G2	210	210
2	51	G 1 1/2	34	69	25	90	103	42.9	77.8	13.5	M 12×45	1/2×1 3/4	1.40	PAFG108G112	210	210
2	51	G 2	42	69	25	90	103	42.9	77.8	13.5	M 12×45	1/2×1 3/4	1.35	PAFG108G	210	210

6000 PSI Series

1/2	13	G 3/8	10	38	16	47	56	18.2	40.5	9.0	M 08×30	5/16×1 1/4	0.30	PAFG401G38	420	420
1/2	13	G 1/2	12	40	16	47	56	18.2	40.5	9.0	M 08×30	5/16×1 1/4	0.32	PAFG401G	420	420
1/2	13	G 3/4	13	43	16	47	56	18.2	40.5	9.0	M 08×30	5/16×1 1/4	0.35	PAFG401G34	420	420
3/4	19	G 1/2	12	44	18	53	71	23.8	50.8	11.0	M 10×35	3/8×1 1/2	0.68	PAFG402G12	420	420
3/4	19	G 3/4	17	47	18	53	71	23.8	50.8	11.0	M 10×35	3/8×1 1/2	0.73	PAFG402G	420	420
3/4	19	G 1	19	49	18	53	71	23.8	50.8	11.0	M 10×35	3/8×1 1/2	0.82	PAFG402G1	420	420
1	25	G 3/4	17	54	21	66	80	27.8	57.2	13.0	M 12×45	7/16×1 1/2	1.00	PAFG403G34	420	420
1	25	G 1	22	56	21	66	80	27.8	57.2	13.0	M 12×45	7/16×1 1/2	1.15	PAFG403G	420	420
1	25	G 1 1/4	25	56	21	66	80	27.8	57.2	13.0	M 12×45	7/16×1 1/2	1.20	PAFG403G114	420	420
1 1/4	32	G 1	22	61	24	78	94	31.8	66.6	15.0	M 14×50	1/2×1 3/4	1.60	PAFG404G1	420	420
1 1/4	32	G 1 1/4	27	61	24	78	94	31.8	66.6	15.0	M 14×50	1/2×1 3/4	1.80	PAFG404G	420	420
1 1/4	32	G 1 1/2	31	63	24	78	94	31.8	66.6	15.0	M 14×50	1/2×1 3/4	1.85	PAFG404G112	420	420
1 1/2	38	G 1 1/4	27	65	27	90	106	36.5	79.3	17.0	M 16×55	5/8×2 1/4	2.20	PAFG405G114	420	420
1 1/2	38	G 1 1/2	32	67	27	90	106	36.5	79.3	17.0	M 16×55	5/8×2 1/4	2.25	PAFG405G	420	420

¹⁾ Pressure shown = Item deliverable

$$\frac{PN \text{ (bar)}}{10} = PN \text{ (MPa)}$$

*Please add the suffixes below according to the material/surface required.

Order code suffixes					
Material	Suffix surface and material	Example only 4 bolt flange	Example 4 bolt flange incl. metr. screws and O-ring	Example 4 bolt flange incl. UNC screws and O-ring	Standard sealing material (no additional suffix needed)
Steel, zinc plated, Cr(VI)-free	CF	PAFG080GCF	PAFG080GCFM	PAFG080GCFU	NBR
Stainless steel	SS	PAFG080GSS	PAFG080GSSM	-	VIT

