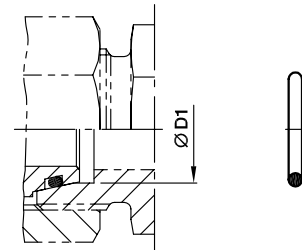



OR O-Ring for fittings with EO 24° DKO swivel

For Type:

DA, EGE, EGEO, MAVE, EW, EV, ET, EL, RED, GZ, GZR, VKA, VKAM



| Series | D1 | O-ring NBR Shore-hardness approx. 90 | O-ring FKM Shore-hardness approx. 90 |
|-----------------|--------|-----------------------------------------|-----------------------------------------|
| L ³⁾ | 6 | OR4.5X1.5X | OR4.5X1.5VITX |
| | 8 | OR6.5X1.5X | OR6.5X1.5VITX |
| | 10 | OR8.5X1.5X | OR8X1.5VITX |
| | 12 | OR10.5X1.5X | OR10X1.5VITX |
| | 15 | OR12.5X2X | OR12X2VITX |
| | 18 | OR16X2X | OR15X2VITX |
| | 22 | OR20X2X | OR20X2VITX |
| | 28 | OR26X2X | OR26X2VITX |
| | 35 | OR32X2.5X | OR32X2.5VITX |
| | 42 | OR39X2.5X | OR38X2.5VITX |
| S ⁴⁾ | 6 | OR4.5X1.5X | OR4.5X1.5VITX |
| | 8 | OR6.5X1.5X | OR6.5X1.5VITX |
| | 10 | OR8.5X1.5X | OR8X1.5VITX |
| | 12 | OR10.5X1.5X | OR10X1.5VITX |
| | 14 | OR12X2X | OR12X2VITX |
| | 16 | OR14X2X | OR13X2VITX |
| | 20 | OR17X2.5X | OR16.3X2.4VITX |
| | 25 | OR22X2.5X | OR20.3X2.4VITX |
| | 30 | OR27X2.5X | OR25.3X2.4VITX |
| | 38 | OR35X2.5X | OR33.3X2.4VITX |

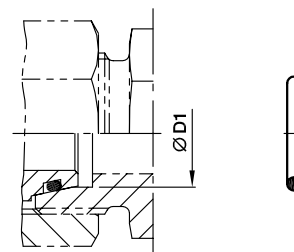
³⁾ L = light series; ⁴⁾ S = heavy series

Weld fittings



OR O-ring for weld nipple

For Type: SKA, SKAR, SKA-RB



| Series | D1 | O-ring NBR Shore-Hardness approx. 90 | O-ring FKM Shore-Hardness approx. 90 |
|-----------------|--------|--------------------------------------------|--------------------------------------------|
| L ³⁾ | 06 | OR4.5X1.5X | OR4.5X1.5VITX |
| | 08 | OR6.5X1.5X | OR6.5X1.5VITX |
| | 10 | OR8.5X1.5X | OR8X1.5VITX |
| | 12 | OR10.5X1.5X | OR10X1.5VITX |
| | 15 | OR12.5X1.5X | OR12X2VITX |
| | 18 | OR16X2X | OR15X2VITX |
| | 22 | OR20X2X | OR20X2VITX |
| | 28 | OR26X2X | OR26X2VITX |
| | 35 | OR32X2.5X | OR32X2.5VITX |
| | 42 | OR39X2.5X | OR38X2.5VITX |
| S ⁴⁾ | 06 | OR4.5X1.5X | OR4.5X1.5VITX |
| | 08 | OR6.5X1.5X | OR6.5X1.5VITX |
| | 10 | OR8.5X1.5X | OR8X1.5VITX |
| | 12 | OR10.5X1.5X | OR10X1.5VITX |
| | 14 | OR12X2X | OR12X2VITX |
| | 16 | OR14X2X | OR13X2VITX |
| | 20 | OR17X2.5X | OR16.3X2.4VITX |
| | 25 | OR22X2.5X | OR20.3X2.4VITX |
| | 30 | OR27X2.5X | OR25.3X2.4VITX |
| | 38 | OR35X2.5X | OR33.3X2.4VITX |

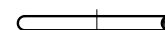
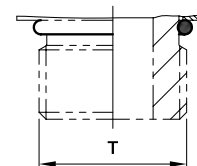
³⁾L = light series; ⁴⁾S = heavy series



DIN fittings

OR O-rings for male stud ends

Male metric thread – O-ring (ISO 6149)
Male UN/UNF thread – O-ring (ISO 11926)



Types with metric thread:
VSTI-OR, GEO, EGEO

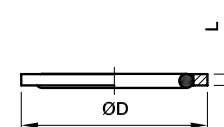
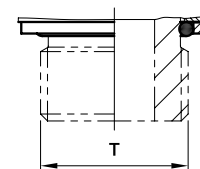
| Thread T | O-ring NBR | O-ring FKM |
|-------------|-------------------|-----------------------|
| M 08×1.0 | OR6.1X1.6 | OR6.1X1.6VITX |
| M 10×1.0 | OR8.1X1.6 | OR8.1X1.6VITX |
| M 12×1.5 | OR9.3X2.2 | OR9.3X2.2VITX |
| M 14×1.5 | OR11.3X2.2 | OR11.3X2.2VITX |
| M 16×1.5 | OR13.3X2.2 | OR13.3X2.2VITX |
| M 18×1.5 | OR15.3X2.2 | OR15.3X2.2VITX |
| M 22×1.5 | OR19.3X2.2 | OR19.3X2.2VITX |
| M 27×2.0 | OR23.6X2.9 | OR23.6X2.9VITX |
| M 33×2.0 | OR29.6X2.9 | OR29.6X2.9VITX |
| M 42×2.0 | OR38.6X2.9 | OR38.6X2.9VITX |
| M 48×2.0 | OR44.6X2.9 | OR44.6X2.9VITX |

Types with UN/UNF thread:
GE-UNF

| Thread T | O-ring NBR | O-ring FKM |
|--------------|---------------------|-------------------------|
| 7/16-20 UNF | OR8.92X1.83 | OR8.92X1.83VITX |
| 9/16-18 UNF | OR11.89X1.98 | OR11.89X1.98VITX |
| 3/4-16 UNF | OR16.36X2.21 | OR16.36X2.21VITX |
| 7/8-14 UNF | OR19.18X2.46 | OR19X2.5VITX |
| 1 1/16-12 UN | OR23.47X2.95 | OR23.47X2.95VITX |
| 1 5/16-12 UN | OR29.74X2.95 | OR29.74X2.95VITX |
| 1 5/8-12 UN | OR37.46X3 | OR37.46X3VITX |
| 1 7/8-12 UN | OR43.69X3 | OR43.69X3VITX |

OR O-rings and retaining rings for male stud ends

Adjustable BSPP thread – O-ring + retaining ring (ISO 1179)



Types with BSPP thread: WEE-R

| Thread T | O-ring NBR | Steel | | | Stainless Steel | | | |
|-------------|----------------------|-------|-----|------------------------------------|-------------------------|------|-----|-------------------------------------------------|
| | | D | L | Order code Retaining ring CF | O-ring FKM | D | L | Order code Retaining ring Stainless Steel |
| G 1/8 A | OR8X1.88X | 14.8 | 1.4 | RRS1/8CF | same like steel | 15.0 | 1.4 | 8207SS1/8 |
| G 1/4 A | OR10.77X2.62X | 19.8 | 1.9 | RRS1/4CF | OR10.77X2.62VITX | 19.5 | 1.9 | 8207SS1/4A |
| G 3/8 A | OR13.94X2.62X | 22.8 | 2.0 | RRS3/8CF | same like steel | 23.5 | 1.9 | 8207SS3/8A |
| G 1/2 A | OR18X3.15X | 27.8 | 2.6 | RRS1/2CF | OR17.96X2.62VITX | 28.5 | 1.9 | 8207SS1/2 |
| G 3/4 A | OR23X3X | 32.8 | 2.5 | RRS3/4CF | OR23.47X2.62VITX | 34.5 | 1.9 | 8207SS3/4 |
| G 1 A | OR29.74X3.53X | 40.8 | 2.5 | RRS1CF | same like steel | 43.5 | 2.6 | 8207SS1A |
| G 1 1/4 A | OR37.69X3.53X | 50.8 | 2.6 | RRS11/4CF | same like steel | 52.5 | 2.6 | 8207SS11/4 |
| G 1 1/2 A | OR44.04X3.53X | 55.8 | 2.6 | RRS11/2CF | same like steel | 60.0 | 2.6 | 8207SS11/2 |

| Order code suffixes | |
|---------------------|------------------|
| Material | Example |
| NBR | OR10.77X2.62X |
| FKM | OR10.77X2.62VITX |




OR O-Rings for banjo fittings WH/TH

| For WH / TH | For WH / TH | O-ring NBR | O-ring FKM |
|-------------|-------------|--------------------|-----------------------|
| 06LM/LR | 06SM/SR | OR9.3X1.5X | OR9.3X1.5VITX |
| 08LM/LR | | OR12.5X1.5X | OR12.5X1.5VITX |
| 10LM/LR | | OR12.5X1.5X | OR12.5X1.5VITX |
| 12LM/LR | | OR16X1.5X | OR16X1.5VITX |
| 12LM/LR | | OR16X1.5X | OR16X1.5VITX |
| 15LM | 12SM | OR18X1.5X | OR18X1.5VITX |
| 15LR | 14SM/SR | OR20X1.5X | OR20X1.5VITX |
| 18LM/LR | 16SM/SR | OR20X1.5X | OR20X1.5VITX |
| 22LM/LR | 20SM/SR | OR25X2X | OR25X2VITX |
| 28LM/LR | 25SM/SR | OR33X2.5X | OR33X2.5VITX |
| 35LM/LR | 30SM/SR | OR41X2.5X | OR41X2.5VITX |
| 42LM/LR | 38SM/SR | OR46X3X | OR46X3VITX |

OR O-Rings for banjo elbows SWVE..M/R KDSOMD

| For SWVE..M/R KDSOMD | O-ring NBR |
|-------------------------------------------|----------------------|
| 04LLR/- 06LLR/LLM 08LLR/LLM 06LR/LM | OR9X1.2X |
| 08LM 06SM | OR10X1.5X |
| 08LR 06SR 10LR/LM 08SR/LM | OR12.5X1.5X |
| 12LR/LM 10SR/LM 12SR | OR15X1.5X |
| 15LM 12SM | OR16X1.5X |
| 15LR 14SR/- | OR19X1.5X |
| 18LR/LM 16SR/SM | OR20X1.5X |
| 22LR/LM 20SR/SM | OR25.12X1.78X |
| 28LR/LM 25SR/SM | OR33X2.5X |
| 35LR/LM 30SR/SM | OR41X2.5X |
| 42LR/LM 38SR/SM | OR46X3.0X |


DKI Sealing ring for pressure gauge connectors

| Female thread | D1 | D2 | L1 | Weight g/1 piece | Order code | |
|---------------|----|------|-----|------------------|------------------|--------------------|
| | | | | | Steel CF | Stainless Steel 71 |
| G 1/4 | 6 | 11.3 | 4.5 | 2.5 | DKI1/4CFX | DKI1/471X |
| G 1/2 | 12 | 18.5 | 5.0 | 5.0 | DKI1/2CFX | DKI1/271X |