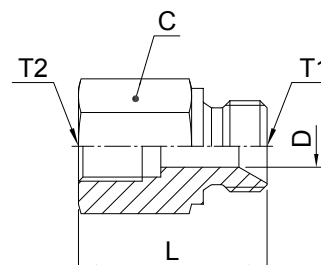


## Adapters

### G4MK4 Female connector

BSPP 60° Cone end (ISO8434-6) / Female BSPP thread (ISO1179-1)



| Thread<br>BSPP<br>T1 | Thread<br>BSPP<br>T2 | C<br>mm | D<br>mm | L<br>mm | Weight<br>(steel)<br>g/1 piece | Adapter<br>Steel   | Adapter<br>Stainless Steel | PN (bar) |     |
|----------------------|----------------------|---------|---------|---------|--------------------------------|--------------------|----------------------------|----------|-----|
|                      |                      |         |         |         |                                |                    |                            | S        | SS  |
| 1/4-19               | 1/4-19               | 19      | 4.7     | 34      | 47                             | <b>4-4G4MK4S</b>   | <b>4-4G4MK4SS</b>          | 350      | 350 |
| 3/8-19               | 1/4-19               | 22      | 7.9     | 36      | 74                             | <b>6G4MK4S</b>     | <b>6G4MK4SS</b>            | 350      | 350 |
| 3/8-19               | 3/8-19               | 27      | 7.9     | 35      | 75                             | <b>6-6G4MK4S</b>   | <b>6-6G4MK4SS</b>          | 200      | 200 |
| 1/2-14               | 1/4-19               | 27      | 11.1    | 38      | 77                             | <b>8-4G4MK4S</b>   | <b>8-4G4MK4SS</b>          | 200      | 200 |
| 1/2-14               | 3/8-19               | 27      | 11.1    | 40      | 102                            | <b>8G4MK4S</b>     | <b>8G4MK4SS</b>            | 200      | 200 |
| 1/2-14               | 1/2-14               | 27      | 11.1    | 46      | 120                            | <b>8-8G4MK4S</b>   | <b>8-8G4MK4SS</b>          | 200      | 200 |
| 3/4-14               | 1/4-19               | 32      | 16.7    | 40      | 180                            | <b>12-4G4MK4S</b>  | <b>12-4G4MK4SS</b>         | 200      | 200 |
| 3/4-14               | 3/8-19               | 32      | 16.7    | 42      | 167                            | <b>12-6G4MK4S</b>  | <b>12-6G4MK4SS</b>         | 200      | 200 |
| 3/4-14               | 1/2-14               | 32      | 16.7    | 48      | 209                            | <b>12-8G4MK4S</b>  | <b>12-8G4MK4SS</b>         | 200      | 200 |
| 3/4-14               | 3/4-14               | 36      | 16.7    | 46      | 188                            | <b>12G4MK4S</b>    | <b>12G4MK4SS</b>           | 200      | 200 |
| 1-11                 | 1/4-19               | 41      | 22.2    | 43      | 298                            | <b>16-4G4MK4S</b>  | <b>16-4G4MK4SS</b>         | 120      | 120 |
| 1-11                 | 3/8-19               | 41      | 22.2    | 45      | 287                            | <b>16-6G4MK4S</b>  | <b>16-6G4MK4SS</b>         | 120      | 120 |
| 1-11                 | 1/2-14               | 41      | 22.2    | 51      | 275                            | <b>16-8G4MK4S</b>  | <b>16-8G4MK4SS</b>         | 120      | 120 |
| 1-11                 | 3/4-14               | 41      | 22.2    | 52      | 360                            | <b>16-12G4MK4S</b> | <b>16-12G4MK4SS</b>        | 120      | 120 |

Order codes shown are part of our current manufacturing programme.

Imperial and metric parts may vary in hexagon dimensions.

$$\frac{\text{PN (bar)}}{10} = \text{PN (MPa)}$$

Do not create drawings from these dimensions, they are subject to change and ISO manufacturing allowances.

