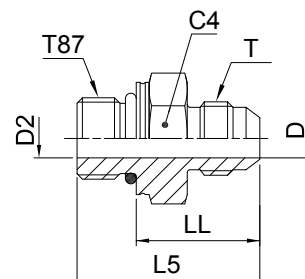


## Triple-Lok®

### F87OMX Male stud connector

Triple-Lok® 37° Flare end / Male metric thread – O-ring (ISO 6149)



Tube O.D.		Thread Metric T87	Thread UN/UNF-2A T	C4 mm	D mm	D2 mm	L5 mm	LL mm	Weight (steel) g/1 piece	Triple-Lok® Steel	Triple-Lok® Stainless Steel	PN (bar)	
mm	in.											S	SS
6	1/4	M 10×1.0	7/16-20	14	4.4	4.4	30	21.5	25	<b>4M10F87OMXS</b>	<b>4M10F87OMXS</b>	500	350
8	5/16	M 10×1.0	1/2-20	14	4.4	6	30	21.5	30	<b>5M10F87OMXS</b>	<b>5M10F87OMXS</b>	420	350
8	5/16	M 12×1.5	1/2-20	19	6	6	33	22	37	<b>5M12F87OMXS</b>	<b>5M12F87OMXS</b>	420	350
8	5/16	M 14×1.5	1/2-20	19	6	6	34	23	40	<b>5M14F87OMXS</b>	<b>5M14F87OMXS</b>	420	350
10	3/8	M 14×1.5	9/16-18	19	7.5	7.5	34	23	44	<b>6M14F87OMXS</b>	<b>6M14F87OMXS</b>	420	350
10	3/8	M 16×1.5	9/16-18	22	7.5	7.5	35.5	24.5	53	<b>6M16F87OMXS</b>	<b>6M16F87OMXS</b>	420	350
10	3/8	M 18×1.5	9/16-18	24	7.5	7.5	36.5	24	60	<b>6M18F87OMXS</b>	<b>6M18F87OMXS</b>	350	350
12	1/2	M 14×1.5	3/4-16	19	9.9	7.5	36	25	41	<b>8M14F87OMXS</b>	<b>8M14F87OMXS</b>	420	350
12	1/2	M 16×1.5	3/4-16	22	9.9	9	38	26.5	57	<b>8M16F87OMXS</b>	<b>8M16F87OMXS</b>	420	350
12	1/2	M 18×1.5	3/4-16	24	9.9	9.9	39	26.5	71	<b>8M18F87OMXS</b>	<b>8M18F87OMXS</b>	350	350
14, 15, 16	5/8	M 14×1.5	7/8-14	24	12.3	7.5	40.5	29.5	73	<b>10M14F87OMXS</b>	<b>10M14F87OMXS</b>	350	350
14, 15, 16	5/8	M 18×1.5	7/8-14	24	12.3	11	43	30.5	75	<b>10M18F87OMXS</b>	<b>10M18F87OMXS</b>	350	350
14, 15, 16	5/8	M 22×1.5	7/8-14	27	12.3	12.3	43.5	30.5	98	<b>10M22F87OMXS</b>	<b>10M22F87OMXS</b>	350	350
14, 15, 16	5/8	M 27×2.0	7/8-14	32	12.3	12.3	46	30	75	<b>10M27F87OMXS</b>	<b>10M27F87OMXS</b>	350	350
18, 20	3/4	M 22×1.5	1 1/16-12	27	15.5	14	48	35	104	<b>12M22F87OMXS</b>	<b>12M22F87OMXS</b>	350	350
18, 20	3/4	M 27×2.0	1 1/16-12	32	15.5	15.5	51	35	158	<b>12M27F87OMXS</b>	<b>12M27F87OMXS</b>	350	350
25	1	M 27×2.0	1 5/16-12	36	21.5	18	50.5	34.5	206	<b>16M27F87OMXS</b>	<b>16M27F87OMXS</b>	280	280
25	1	M 33×2.0	1 5/16-12	41	21.5	21.5	53	37	273	<b>16M33F87OMXS</b>	<b>16M33F87OMXS</b>	280	280
28, 30, 32	1 1/4	M 42×2.0	1 5/8-12	50	27.5	30	55	39	431	<b>20M42F87OMXS</b>	<b>20M42F87OMXS</b>	280	210
35, 38	1 1/2	M 48×2.0	1 7/8-12	55	33	33	59	41.5	564	<b>24M48F87OMXS</b>	<b>24M48F87OMXS</b>	210	140

Steel, stainless steel and brass Triple-Lok® parts are delivered with NBR elastomeric seals as standard. For more details on other seal materials see page K92.

Order codes shown are part of our current manufacturing programme.

Imperial and metric parts may vary in hexagon dimensions.

$$\frac{\text{PN (bar)}}{10} = \text{PN (MPa)}$$

Do not create drawings from these dimensions, they are subject to change and ISO manufacturing allowances.