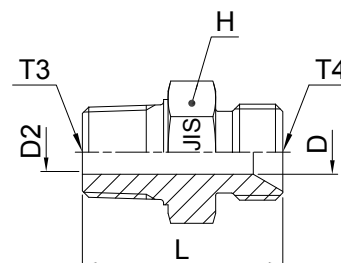


## Adapters

### F3P4 Male stud connector

JIS BSPP 60° Cone end (JIS B8363) / Male BSPT thread (ISO 7)

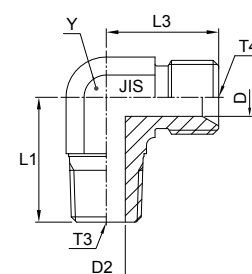


Thread BSPP T4	Thread BSPT T3	D mm	D2 mm	H mm	L mm	Weight (steel) g/1 piece	Adapter Steel	Adapter Stainless Steel	PN (bar)	
									S	SS
1/4-19	1/4-19	4.5	4.5	19	37	47	<b>4F3P4S</b>	<b>4F3MP4SS</b>	315	315
3/8-19	3/8-19	7	7	22.2	38	67	<b>6F3P4S</b>	<b>6F3MP4SS</b>	315	315
1/2-14	1/2-14	11	11	27	46	109	<b>8F3P4S</b>	<b>8F3MP4SS</b>	200	200
3/4-14	3/4-14	15.9	15.9	36.5	52	195	<b>12F3P4S</b>	<b>12F3MP4SS</b>	160	160
1-11	1-11	21	21	41.3	58	292	<b>16F3P4S</b>	<b>16F3MP4SS</b>	120	120

Do not create drawings from these dimensions, they are subject to change and ISO manufacturing allowances.

### C3P4 Male 90° elbow

JIS BSPP 60° cone end (JIS B8363) / Male BSPT thread (ISO 7)



Thread BSPP T4	Thread BSPT T3	D mm	D2 mm	L1 mm	L3 mm	Y mm	Weight (steel) g/1 piece	Adapter Steel	PN (bar)
3/8-19	3/8-19	7	7	30	29	19	97	<b>6C3P4S</b>	315
1/2-14	1/2-14	11	11	36	33	22	147	<b>8C3P4S</b>	200
3/4-14	3/4-14	15.9	15.9	43	40	27	206	<b>12C3P4S</b>	160
1-11	1-11	21	21	50	44	33.3	434	<b>16C3P4S</b>	120

Order codes shown are part of our current manufacturing programme.  
Imperial and metric parts may vary in hexagon dimensions.

$\frac{\text{PN (bar)}}{10} = \text{PN (MPa)}$

Do not create drawings from these dimensions, they are subject to change and ISO manufacturing allowances.