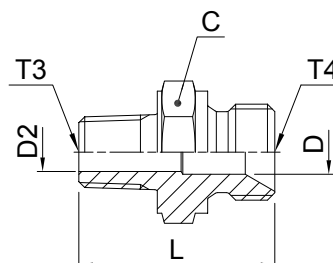


## Adapters

### F3MK4 Male stud connector

BSPP 60° Cone end (ISO 8434-6) / Male BSPT thread (ISO 7)



Thread BSPP T4	Thread BSPT T3	C mm	D mm	D2 mm	L mm	Weight (steel) g/1 piece	Adapter Steel	Adapter Stainless Steel	PN (bar)	
									S	SS
1/8-28	1/8-28	14	3.5	3.5	25	15	<b>2F3MK4S</b>	<b>2F3MK4SS</b>	315	315
1/8-28	1/4-19	14	3.5	7	29	28	<b>2-4F3MK4S</b>	<b>2-4F3MK4SS</b>	315	315
1/4-19	1/4-19	19	4.7	4.7	34	31	<b>4-4F3MK4S</b>	<b>4-4F3MK4SS</b>	315	315
1/4-19	1/8-28	19	4.7	4.7	29	27	<b>4F3MK4S</b>	<b>4F3MK4SS</b>	315	315
1/4-19	3/8-19	19	4.7	10	34	44	<b>4-6F3MK4S</b>	<b>4-6F3MK4SS</b>	315	315
3/8-19	3/8-19	22	7.9	7.9	35	52	<b>6-6F3MK4S</b>	<b>6-6F3MK4SS</b>	315	315
3/8-19	1/2-14	22	7.9	13.5	40	68	<b>6-8F3MK4S</b>	<b>6-8F3MK4SS</b>	160	160
3/8-19	1/4-19	22	7.9	7	35	48	<b>6F3MK4S</b>	<b>6F3MK4SS</b>	315	315
1/2-14	1/2-14	27	11.1	11.1	44	79	<b>8-8F3MK4S</b>	<b>8-8F3MK4SS</b>	160	160
1/2-14	3/8-19	27	11.1	10	39	68	<b>8F3MK4S</b>	<b>8F3MK4SS</b>	200	200
5/8-14	1/2-14	30	14.3	13.5	46	101	<b>10F3MK4S</b>	<b>10F3MK4SS</b>	200	200
5/8-14	3/4-14	30	14.3	14.3	47	102	<b>10-12F3MK4S</b>	<b>10-12F3MK4SS</b>	160	160
3/4-14	1/2-14	32	16.7	13.5	46	111	<b>12-8F3MK4S</b>	<b>12-8F3MK4SS</b>	315	315
3/4-14	3/4-14	32	16.7	16.7	46	126	<b>12F3MK4S</b>	<b>12F3MK4SS</b>	160	160
3/4-14	1-14	36	16.7	24	51	242	<b>12-16F3MK4S</b>	<b>12-16F3MK4SS</b>	120	120
1-11	3/4-14	41	22.2	18	50	173	<b>16-12F3MK4S</b>	<b>16-12F3MK4SS</b>	120	120
1-11	1-11	41	22.2	22.2	55	219	<b>16F3MK4S</b>	<b>16F3MK4SS</b>	120	120
1 1/4-11	1 1/4-11	50	28.6	32	64	337	<b>20F3MK4S</b>	<b>20F3MK4SS</b>	105	105
1 1/2-11	1 1/2-11	55	33.3	33.3	69	497	<b>24F3MK4S</b>	<b>24F3MK4SS</b>	105	105

Order codes shown are part of our current manufacturing programme.

Imperial and metric parts may vary in hexagon dimensions.

$$\frac{\text{PN (bar)}}{10} = \text{PN (MPa)}$$

Do not create drawings from these dimensions, they are subject to change and ISO manufacturing allowances.