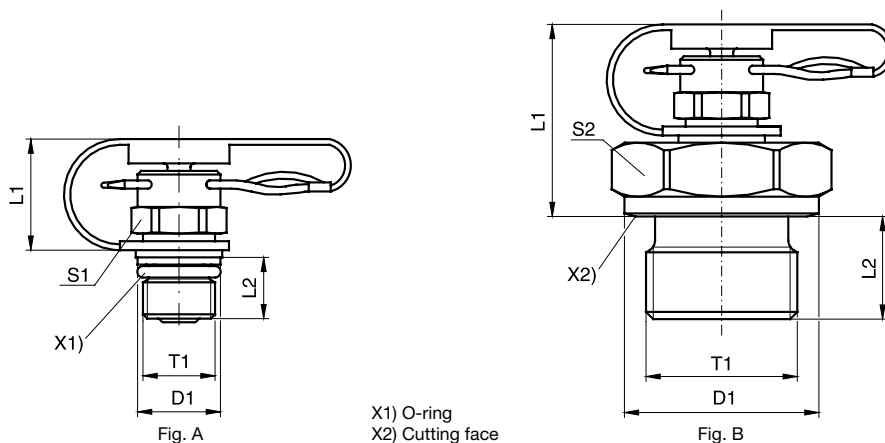


Parker SensoControl® Test Points

EMA1 Test point fitting with pin-lock

Series 1

Male stud thread: BSP, metric



| T1 | D1 | L1 | L2 | S1 | S2 | Fig. | Weight g/1 piece | Order code* | PN (bar) ¹⁾ CF | DF** |
|----------|------|------|------|----|----|------|---------------------|--------------------|------------------------------|------|
| M 12×1.5 | 17.0 | 32.0 | 12.0 | | 19 | B | 53 | EMA1/12X1.5 | 400 | 4 |
| M 14×1.5 | 19.0 | 32.0 | 12.0 | | 19 | B | 56 | EMA1/14X1.5 | 400 | 4 |
| M 16×1.5 | 21.0 | 25.0 | 12.0 | | 22 | B | 47 | EMA1/16X1.5 | 400 | 4 |
| G 1/8 | 14.0 | 32.5 | 8.0 | | 17 | B | 41 | EMA1/1/8 | 400 | 4 |
| G 1/4 | 18.0 | 32.0 | 12.0 | | 19 | B | 54 | EMA1/1/4 | 400 | 4 |
| G 3/8 | 22.0 | 27.5 | 12.0 | | 22 | B | 55 | EMA1/3/8 | 400 | 4 |
| G 1/2 | 26.0 | 27.5 | 14.0 | | 27 | B | 78 | EMA1/1/2 | 400 | 4 |
| M 08×1.0 | 9.5 | 17.5 | 8.4 | 12 | | A | 16 | EMA1/8X1OR | 400 | 4 |
| M 10×1.0 | 11.5 | 18.0 | 8.0 | 12 | | A | 18 | EMA1/10X1OR | 400 | 4 |
| M 10×1.0 | 14.0 | 32.5 | 8.0 | | 17 | B | 42 | EMA1/10X1 | 400 | 4 |

**DF = Design Factor

¹⁾ Pressure shown = item deliverable

$\frac{\text{PN (bar)}}{10} = \text{PN (MPa)}$

*Please add the **suffixes** below according to the material/surface required.

| Order code suffixes | | | |
|---------------------------------|-----------------------------|---------------|---|
| Material | Suffix surface and material | Example | Standard sealing material (no additional suffix needed) |
| Steel, zinc plated, Cr(VI)-free | CF | EMA1/12X1.5CF | NBR |