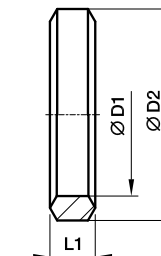


## DIN fittings



### DKAZ Sealing ring

for low pressure banjos DSVW



For DSVW		Metric thread parallel	D1	D2	L1	Weight g/1 piece	Order code Steel CF
06LM		M 10×1.0	10.1	14	3.2	2	<b>DKAZ10CFX</b>
08LM	06SM	M 12×1.5	12.1	17	4.2	3	<b>DKAZ12CFX</b>
10LM	08SM	M 14×1.5	14.1	19	4.5	4	<b>DKAZ14CFX</b>
12LM	10SM	M 16×1.5	16.1	21	4.5	4	<b>DKAZ16CFX</b>
15LM	12SM	M 18×1.5	18.1	23	4.5	5	<b>DKAZ18CFX</b>
	14SM	M 20×1.5	20.1	25	4.5	5	<b>DKAZ20CFX</b>
18LM	16SM	M 22×1.5	22.1	27	4.5	6	<b>DKAZ22CFX</b>
22LM		M 26×1.5	26.1	31	4.5	7	<b>DKAZ26CFX</b>
	20SM	M 27×2.0	27.1	32	5.0	8	<b>DKAZ27CFX</b>
28LM	25SM	M 33×2.0	33.1	39	6.0	15	<b>DKAZ33CFX</b>
35LM	30SM	M 42×2.0	42.1	49	6.5	22	<b>DKAZ11/4CFX</b>
42LM	38SM	M 48×2.0	48.1	55	6.5	25	<b>DKAZ11/2CFX</b>

For DSVW		BSPP thread parallel	D1	D2	L1	Weight g/1 piece	Order code Steel CF
06LR		G 1/8 A	9.8	14	3.2	2	<b>DKAZ1/8CFX</b>
08LR/10LR	06SR/08SR	G 1/4 A	13.3	18	4.5	4	<b>DKAZ1/4CFX</b>
12LR	10SR/12SR	G 3/8 A	16.8	22	4.5	5	<b>DKAZ3/8CFX</b>
15LR/18LR	14SR/16SR	G 1/2 A	21.1	26	5.0	6	<b>DKAZ1/2CFX</b>
22LR	20SR	G 3/4 A	26.6	32	5.0	11	<b>DKAZ3/4CFX</b>
28LR	25SR	G 1 A	33.4	39	6.0	14	<b>DKAZ1CFX</b>
35LR	30SR	G 1 1/4 A	42.1	49	6.5	22	<b>DKAZ11/4CFX</b>
42LR	38SR	G 1 1/2 A	48.1	55	6.5	25	<b>DKAZ11/2CFX</b>