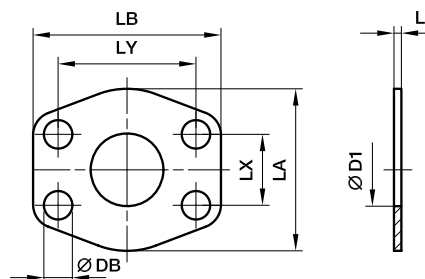




## SAE 4 Flange accessories

### CPM SAE Flange connector plate

ISO 6162-1/-2



#### 3000 PSI Series

Nom. flange size		D1	L1	LA	LB	LX	LY	DB	Weight (steel) kg/piece	Order code*	PN (bar) <sup>1)</sup>	
SAE (in.)	ISO (DN)										CF	SS
1/2	13	13	3	47	57	17.5	38.1	9.0	0.01	<b>8CPM1</b>	345	345
3/4	19	19	3	49	66	22.3	47.6	11.0	0.01	<b>12CPM1</b>	345	345
1	25	25	3	53	71	26.2	52.4	11.0	0.01	<b>16CPM1</b>	345	345
1 1/4	32	32	3	69	80	30.2	58.7	11.5	0.02	<b>20CPM1</b>	276	276
1 1/2	38	38	3	77	95	35.7	69.9	13.5	0.02	<b>24CPM1</b>	207	207
2	51	51	3	89	103	42.9	77.8	13.5	0.03	<b>32CPM1</b>	207	207
2 1/2	64	63	3	101	116	50.8	88.9	13.5	0.03	<b>40CPM1</b>	172	172
3	76	73	4	124	136	61.9	106.4	17.0	0.04	<b>48CPM1</b>	138	138
3 1/2	89	89	4	136	152	69.9	120.7	17.0	0.06	<b>56CPM1</b>	34	34
4	102	99	4	146	162	77.8	130.2	17.0	0.08	<b>64CPM1</b>	34	34
5	127	120	4	180	184	92.1	152.4	17.0	0.09	<b>80CPM1</b>	34	34

#### 6000 PSI Series

1/2	13	13	4	47	57	18.2	40.5	9.0	0.01	<b>8CPM2</b>	420	420
3/4	19	17	4	53	71	23.8	50.8	11.0	0.01	<b>12CPM2</b>	420	420
1	25	24	4	66	80	27.8	57.2	13.0	0.02	<b>16CPM2</b>	420	420
1 1/4	32	31	4	77	94	31.8	66.6	15.0	0.03	<b>20CPM2</b>	420	420
1 1/2	38	38	4	89	103	36.5	79.3	17.0	0.04	<b>24CPM2</b>	420	420
2	51	51	4	123	135	44.5	96.8	21.0	0.05	<b>32CPM2</b>	420	420
2 1/2	64	63	4	150	166	58.7	123.8	25.0	0.07	<b>40CPM2</b>	420	420
3	76	73	4	178	208	71.4	152.4	32.0	0.08	<b>48CPM2</b>	420	420

<sup>1)</sup> Pressure shown = Item deliverable

$\frac{PN \text{ (bar)}}{10} = PN \text{ (MPa)}$

\*Please add the **suffixes** below according to the material/surface required.

Order code suffixes			
Material	Suffix surface and material	Example	Description
Steel, zinc plated, Cr(VI)-free	CF	8CPM1CF	only connector plate
Stainless steel	SS	8CPM1SS	only connector plate

