

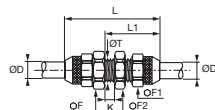
PL Tube-to-Tube and Complementary Fittings

WBPL

Equal Bulkhead Connector



Nickel-plated brass



ØD		F	F1	F2	K _{max}	L	L1	T _{min}	kg
4x6	WBPL4/6	13	11	13	5	39	22	M9x0.75	0.030
6x8	WBPL6/8	14	13	16	5	39	22	M11x0.75	0.032
8x10	WBPL8/10	16	16	17	5	43	24	M13x1	0.057
10x12	WBPL10/12	19	17	19	5	46	26	M15x1.25	0.064
11x14	WBPL11/14	22	22	22	5	50	28	M18x1.5	0.112

PL Nickel-Plated Brass Spigot Fittings

This range of Parker Legris has a sealing system which guarantees **excellent sealing and full flow**. PL fittings for flexible tubing are **fully re-usable**. They provide excellent compatibility with a wide variety of fluids.

Product Advantages

Rapid Assembly

- Nut design allows hand tightening with soft tubing (PU, PE etc.)
- Quick to assemble and disassemble
- Compatible with all flexible tubes of hardness up to 90 shore A (polyurethane, polyamide, polyethylene, fluoropolymers, etc.)
- Mechanical stop on the body to prevent overtightening

Performance

- Special spigot design ensures full flow and excellent tensile performance
- Reliable direct sealing system without the use of a seal or olive
- Low and medium pressure
- Nickel-plated for increased corrosion resistance



Food Process
Painting
Pneumatic Systems
Chemical
Welding
Laboratories
Railway

Applications

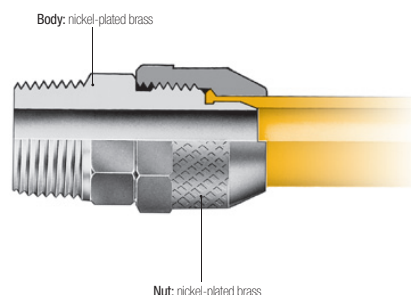
Technical Characteristics

Compatible Fluids	Compressed air Other fluids: contact us
Working Pressure	Vacuum to 40 bar
Working Temperature	-40°C to +100°C

Tensile Performance (polyamide tubing)	Ø	2.7/4	4/6	6/8	7.5/10	8/10	10/12	11/14
daN	11	41	52	88	67	79	149	

Reliable performance is dependent upon the type of fluid conveyed, component materials and tubing being used.
Guaranteed for use with a vacuum of 755 mm Hg (99% vacuum).

Component Materials



Silicone-free

Installation

Cutting the Tube



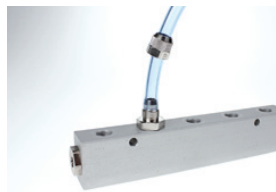
Cut the polymer tube square.

Preparing the Connection



Slide the nut onto the tube.

Connecting the Tube



Push the tube home into the body of the fitting.

Final Assembly



Tighten the nut by hand (in the case of soft tubing) or using a spanner (for semi-rigid tubing) until it comes into contact with the end stop.