





Stud Fittings



CBPL Stud Elbow, Male NPT Thread

	Nickel-plated brass									
	ØD	C		F	H	J	L	kg		
	2.7x4	NPT1/8		8	18	8	22	0.019		
	4x6	NPT1/8		11	18	8	24	0.023		
	4x6	NPT1/4		11	23	10	25	0.036		
	6x8	NPT1/8		13	19	10	25	0.027		
	6x8	NPT1/4		13	23	10	25	0.034		
	8x10	NPT1/4		16	24	12	28	0.058		
	8x10	NPT3/8		16	25	12	28	0.059		
	10x12	NPT3/8		17	27	14	32	0.051		



C3BPL Stud Elbow, Male BSPT Thread

	Nickel-plated brass									
	ØD	C		F	H	J	L	kg		
	2.7x4	R1/8		8	17	8	22	0.018		
	4x6	R1/8		11	17	8	24	0.022		
	4x6	R1/4		11	21.5	10	25	0.031		
	6x8	R1/8		13	18	10	25	0.025		
	6x8	R1/4		13	21.5	10	25	0.031		
	6x8	R3/8		13	23.1	12	27	0.050		
	7.5x10	R1/4		16	22.5	12	28	0.057		
	7.5x10	R3/8		16	23.1	12	28	0.058		
	8x10	R1/4		16	21.5	12	28	0.057		
	8x10	R3/8		16	23.1	12	28	0.058		
	10x12	R3/8		17	25.1	14	32	0.052		
	11x14	R3/8		22	25.1	16	34	0.094		

C4BPL Stud Elbow, Male BSPP Thread

	Nickel-plated brass, NBR									
	ØD	C		E	F	F1	H	J	L	kg
	6x8	G1/4		7	13	13	27	12	27	0.063
These fittings are supplied with nitrile seals.										

C8BPL Stud Elbow, Male Metric Straight Thread

	Nickel-plated brass, NBR									
	ØD	C		E	F	F1	H	J	L	kg
	6x8	M10x1		7	14	13	27.25	10	21.5	0.031
	6x8	M12x1		7	13	13	26	12	25	0.063
These fittings are supplied with nitrile seals.										

PL Nickel-Plated Brass Spigot Fittings

This range of Parker Legris has a sealing system which guarantees **excellent sealing and full flow**. PL fittings for flexible tubing are **fully re-usable**. They provide excellent compatibility with a wide variety of fluids.

Product Advantages

Rapid Assembly

- Nut design allows hand tightening with soft tubing (PU, PE etc.)
- Quick to assemble and disassemble
- Compatible with all flexible tubes of hardness up to 90 shore A (polyurethane, polyamide, polyethylene, fluoropolymers, etc.)
- Mechanical stop on the body to prevent overtightening

Performance

- Special spigot design ensures full flow and excellent tensile performance
- Reliable direct sealing system without the use of a seal or olive
- Low and medium pressure
- Nickel-plated for increased corrosion resistance



Food Process
Painting
Pneumatic Systems
Chemical
Welding
Laboratories
Railway

Applications

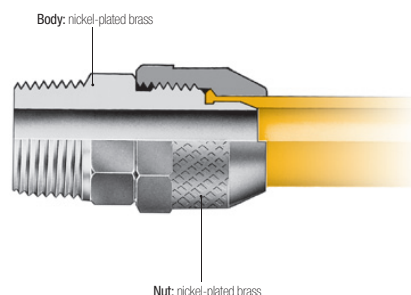
Technical Characteristics

Compatible Fluids	Compressed air Other fluids: contact us
Working Pressure	Vacuum to 40 bar
Working Temperature	-40°C to +100°C

Tensile Performance (polyamide tubing)	Ø	2.7/4	4/6	6/8	7.5/10	8/10	10/12	11/14
daN	11	41	52	88	67	79	149	

Reliable performance is dependent upon the type of fluid conveyed, component materials and tubing being used.
Guaranteed for use with a vacuum of 755 mm Hg (99% vacuum).

Component Materials



Silicone-free

Installation

Cutting the Tube



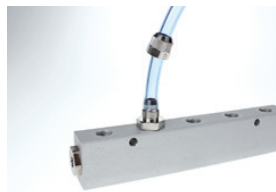
Cut the polymer tube square.

Preparing the Connection



Slide the nut onto the tube.

Connecting the Tube



Push the tube home into the body of the fitting.

Final Assembly



Tighten the nut by hand (in the case of soft tubing) or using a spanner (for semi-rigid tubing) until it comes into contact with the end stop.