

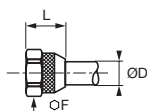
# PL Tube-to-Tube and Complementary Fittings

## BPLM

### Nut



Nickel-plated brass



ØD	C		F	L	kg
2.7x4	M6x0.75	<a href="#">BPL4M</a>	8	10	0.003
4x6	M9x0.75	<a href="#">BPL6M</a>	11	13	0.006
6x8	M11x0.75	<a href="#">BPL8M</a>	13	13	0.008
7.5x10	M13x1	<a href="#">BPL10M</a>	16	14	0.014
8x10	M13x1	<a href="#">BPL10M</a>	16	14	0.014
10x12	M15x1.25	<a href="#">BPL12M</a>	17	16	0.012
11x14	M18x1.5	<a href="#">BPL14M</a>	22	18	0.025

# PL Nickel-Plated Brass Spigot Fittings

This range of Parker Legris has a sealing system which guarantees **excellent sealing and full flow**. PL fittings for flexible tubing are **fully re-usable**. They provide excellent compatibility with a wide variety of fluids.

## Product Advantages

### Rapid Assembly

- Nut design allows hand tightening with soft tubing (PU, PE etc.)
- Quick to assemble and disassemble
- Compatible with all flexible tubes of hardness up to 90 shore A (polyurethane, polyamide, polyethylene, fluoropolymers, etc.)
- Mechanical stop on the body to prevent overtightening

### Performance

- Special spigot design ensures full flow and excellent tensile performance
- Reliable direct sealing system without the use of a seal or olive
- Low and medium pressure
- Nickel-plated for increased corrosion resistance



Food Process  
Painting  
Pneumatic Systems  
Chemical  
Welding  
Laboratories  
Railway

### Applications

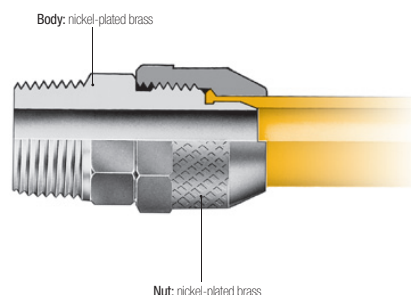
## Technical Characteristics

Compatible Fluids	Compressed air Other fluids: contact us
Working Pressure	Vacuum to 40 bar
Working Temperature	-40°C to +100°C

Tensile Performance (polyamide tubing)	Ø	2.7/4	4/6	6/8	7.5/10	8/10	10/12	11/14
	daN	11	41	52	88	67	79	149

Reliable performance is dependent upon the type of fluid conveyed, component materials and tubing being used.  
Guaranteed for use with a vacuum of 755 mm Hg (99% vacuum).

### Component Materials



Silicone-free

## Installation

### Cutting the Tube



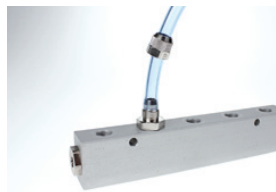
Cut the polymer tube square.

### Preparing the Connection



Slide the nut onto the tube.

### Connecting the Tube



Push the tube home into the body of the fitting.

### Final Assembly



Tighten the nut by hand (in the case of soft tubing) or using a spanner (for semi-rigid tubing) until it comes into contact with the end stop.