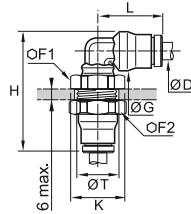


# Bulkhead Connector Fittings

## 3639 Equal Bulkhead Elbow



FDA chemical nickel-plated brass, FKM



ØD		F1	F2	G	H	K	L	ØT min	kg
4	<a href="#">3639 04 00</a>	13	14	10	35	14	18	12.5	0.023
6	<a href="#">3639 06 00</a>	16	17	12	40.5	17.5	21.5	15	0.035
8	<a href="#">3639 08 00</a>	18	19	15	44	19.5	23.5	17	0.046
10	<a href="#">3639 10 00</a>	22	27	17.5	51	24	29	21	0.080
12	<a href="#">3639 12 00</a>	24	24	19.5	55	26	31	23	0.086
14	<a href="#">3639 14 00</a>	27	27	21.5	59	29.5	34	25	0.144

The body swivels for positioning purposes.