
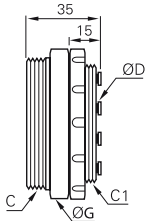




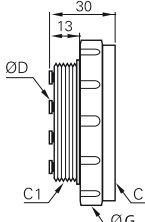

Modular Plug-In Connectors

3320 Multi-Connector Male Screw Body

	Technical polymer, NBR 	ØD	C	C1		Number of Outlets	G	kg	
		4	M38x1.5	M32x1.5	3320 04 00 02		2	42	0.046
			M46x1.5	M40x1.5	3320 04 00 04		4	50	0.070
			M46x1.5	M40x1.5	3320 04 00 07		7	50	0.072
		6	M65x1.5	M58x1.5	3320 04 00 12		12	70	0.136
			M38x1.5	M32x1.5	3320 06 00 02		2	42	0.050
			M46x1.5	M40x1.5	3320 06 00 04		4	50	0.070
		8	M46x1.5	M40x1.5	3320 06 00 07		7	50	0.070
			M38x1.5	M32x1.5	3320 08 00 02		2	45	0.050

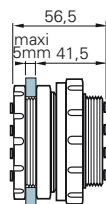
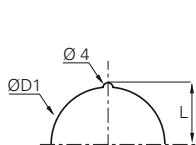
The number of male body outlets must correspond to the same number of outlets on the female body.

3321 Multi-Connector Female Screw Body

	Technical polymer, NBR 	ØD	C	C1		Number of Outlets	G	kg	
		4	M38x1.5	M32x1.5	3321 04 00 02		2	45	0.040
			M46x1.5	M40x1.5	3321 04 00 04		4	55	0.065
			M46x1.5	M40x1.5	3321 04 00 07		7	55	0.063
		6	M65x1.5	M58x1.5	3321 04 00 12		12	75	0.124
			M38x1.5	M32x1.5	3321 06 00 02		2	45	0.043
			M46x1.5	M40x1.5	3321 06 00 04		4	55	0.066
		8	M46x1.5	M40x1.5	3321 06 00 07		7	55	0.064
			M38x1.5	M32x1.5	3321 08 00 02		2	45	0.039

The number of female body outlets must correspond to the same number of outlets on the male body.

Overall Dimensions for Bulkhead Mounting



Number of Outlets	L	ØD1
2	17	32.5
4-7	21	40.5
12	30.3	58.5