
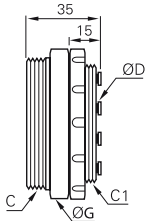




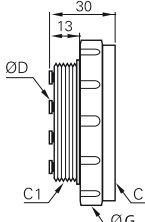

# Modular Plug-In Connectors

## 3320 Multi-Connector Male Screw Body

	Technical polymer, NBR 	<b>ØD</b> <b>C</b> <b>C1</b> 	<b>Number of Outlets</b> <b>G</b> <b>kg</b>
		M38x1.5    M32x1.5 <a href="#">3320 04 00 02</a> M46x1.5    M40x1.5 <a href="#">3320 04 00 04</a> M46x1.5    M40x1.5 <a href="#">3320 04 00 07</a> M65x1.5    M58x1.5 <a href="#">3320 04 00 12</a>	2    42    0.046 4    50    0.070 7    50    0.072 12    70    0.136
		M38x1.5    M32x1.5 <a href="#">3320 06 00 02</a> M46x1.5    M40x1.5 <a href="#">3320 06 00 04</a> M46x1.5    M40x1.5 <a href="#">3320 06 00 07</a>	2    42    0.050 4    50    0.070 7    50    0.070
		M38x1.5    M32x1.5 <a href="#">3320 08 00 02</a>	2    45    0.050

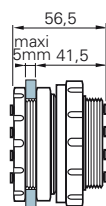
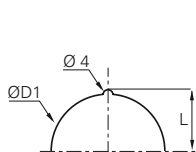
The number of male body outlets must correspond to the same number of outlets on the female body.

## 3321 Multi-Connector Female Screw Body

	Technical polymer, NBR 	<b>ØD</b> <b>C</b> <b>C1</b> 	<b>Number of Outlets</b> <b>G</b> <b>kg</b>
		M38x1.5    M32x1.5 <a href="#">3321 04 00 02</a> M46x1.5    M40x1.5 <a href="#">3321 04 00 04</a> M46x1.5    M40x1.5 <a href="#">3321 04 00 07</a> M65x1.5    M58x1.5 <a href="#">3321 04 00 12</a>	2    45    0.040 4    55    0.065 7    55    0.063 12    75    0.124
		M38x1.5    M32x1.5 <a href="#">3321 06 00 02</a> M46x1.5    M40x1.5 <a href="#">3321 06 00 04</a> M46x1.5    M40x1.5 <a href="#">3321 06 00 07</a>	2    45    0.043 4    55    0.066 7    55    0.064
		M38x1.5    M32x1.5 <a href="#">3321 08 00 02</a>	2    45    0.039

The number of female body outlets must correspond to the same number of outlets on the male body.

### Overall Dimensions for Bulkhead Mounting



Number of Outlets	L	ØD1
2	17	32.5
4-7	21	40.5
12	30.3	58.5