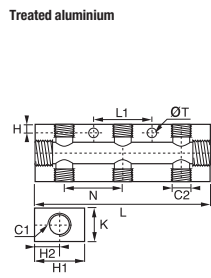


Anodised Aluminium Manifolds

3313 Double Manifold, Female BSPP Thread



	C1	C2	Number of Outlets	H	H1	H2	K	L	L1	N	ØT	kg
G1/4	G1/8	3313 10 13 02	2x2	4.5	30	15	20	61	50	30	5	0.075
	G1/8	3313 10 13 03	2x3	4.5	30	15	20	91	30	30	5	0.115
	G1/8	3313 10 13 04	2x4	4.5	30	15	20	121	60	30	5	0.151
G3/8	G1/8	3313 10 13 05	2x5	4.5	30	15	20	151	90	30	5	0.194
	G1/4	3313 13 17 02	2x2	6	40	20	20	74	61	36	6.5	0.109
	G1/4	3313 13 17 03	2x3	6	40	20	20	110	36	36	6.5	0.179
G1/2	G1/4	3313 13 17 04	2x4	6	40	20	20	146	72	36	6.5	0.238
	G1/4	3313 13 17 05	2x5	6	40	20	20	182	108	36	6.5	0.286
	G1/4	3313 13 21 03	2x3	6	40	20	28	116	36	36	6.5	0.222
G1/2	G1/4	3313 13 21 04	2x4	6	40	20	28	152	72	36	6.5	0.295
	G1/4	3313 13 21 05	2x5	6	40	20	28	188	108	36	6.5	0.369

Adaptors, Plugs and Manifolds

Parker Legris offers a **wide range of adaptors and manifolds** compatible with the various Parker Legris fitting systems. This range of products provides the user with a **complete solution** covering numerous applications, both in non-corrosive and corrosive environments.

Product Advantages

Large Range & Flexibility

A complete offer, from the simple adaptor to a modular manifold solution
 Large selection of materials for excellent chemical compatibility: brass, steel, stainless steel, aluminium
 Surface treatment for increased corrosion resistance: nickel-plated brass or anodised aluminium
 Stainless steel for corrosive environments
 BSPP, BSPT, NPT and metric threads

Performance

Robust design
 Suitable for low to high pressure, depending on configuration and material
 Forged shapes for mechanical strength



Packaging
 Robotics
 Textile
 Pneumatics
 Automotive Process
 Food Process

Applications

Technical Characteristics

Products	Adaptors and Plugs				Manifolds
Component Materials	Brass	Nickel-plated brass	Stainless steel 316L	Steel	Anodised aluminium
Working Pressure	1/8" to 1/2": 200 bar 3/4" and 1": 150 bar 1 1/4" to 2": 100 bar, without sealing washer	60 bar	1/8" to 1/2": 200 bar 3/4" and 1": 150 bar 1 1/4" to 2": 100 bar, without sealing washer	1/8" to 1/2": 200 bar 3/4" and 1": 150 bar 1 1/4" to 2": 100 bar, without sealing washer	20 bar
Working Temperature	-40°C to +150°C without sealing washer -20°C to +80°C with sealing washer	-10°C to +80°C	-20°C to +180°C	-10°C to +80°C	-10°C to +80°C