


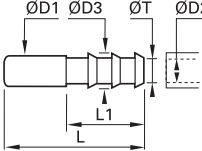
Stainless Steel Compression Fittings


1822

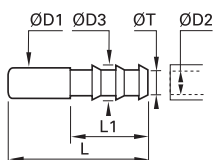
Barb Adaptor for Hose



Stainless steel 316L



ØD1	ØD2		ØD3	L	L1	ØT min	kg
6	7	1822 06 07	9	37.5	22.5	6	0.006
	6	1822 08 06	8	40	22.5	5	0.007
8	7	1822 08 07	9	40	22.5	6	0.007
	10	1822 08 10	12.5	40	22.5	9	0.011
10	7	1822 10 07	9	43	22.5	6	0.009
	10	1822 10 10	12.5	43	22.5	9	0.013
12	10	1822 12 10	12.2	43	22.5	9	0.012
	13	1822 12 13	15	50	29.5	13	0.016



Compression Fittings

Stainless Steel
Compression Fittings

Complementary Stainless Steel Fittings Reducers, Olives and Nuts

This innovative reducer system, using a full range of nuts and olives, enables **different diameters** of stainless steel, fluoropolymer or polymer tubes to be fitted onto **a single Parker Legris compression fitting**.

Product Advantages

Efficient Solution

- Reduces envelope dimensions
- Quick and easy to assemble, whatever the diameters and tube material
- Improved stock management
- Silicone-free

Multiple Combinations

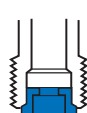
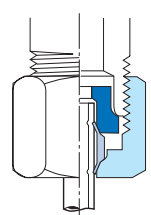

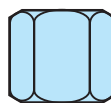
- A single connector for up to 3 different tube materials and sizes.
- Example:
 - Advanced PE tubing 6 mm O.D.
 - stainless steel tubing 8 mm O.D.
 - fluoropolymer tubing 12 mm O.D. or braided PVC hose 10 mm I.D.
- A full range of olives and nuts to optimise all assembly operations



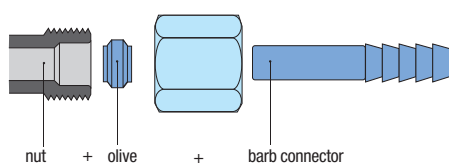
Food Process
Fluid Transmission
Pneumatics
Automotive Process
Petrochemical
Cooling & Heating
Chemical
Offshore Oil & Gas

Applications

Reducer Assembly Procedure

Operation	Assembly Sequence	Assembled Fitting
1 Assemble the reducer Place the reducer in the fitting body.	1 	
2 Assemble the nut and olive Place the nut and then the olive onto the tube.	2 	
3 Assemble the nut Push the tube into the fitting until it bottoms on the reducer. Tighten the nut to the recommended torque (see opposite page).	3 	

Assembly: Barb Connectors



Regulations

DI: 2002/95/EC (RoHS), 2011/65/EC
 DI: 97/23/EC (PED)
 RG: 1935/2004
 RG: 1907/2006 (REACH)
 DI: 94/09/EC (ATEX)
 FDA: 21 CFR 177.1550
 NACE MR0175: compatible materials
 ISO 15156-1/-2/-3: compatible materials

Our barb connector 1822 is designed to be also used with different types of hose. It is secured using the nut and olive provided with the fitting.