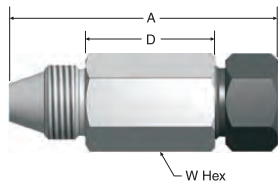


MPI™ Medium Pressure Fittings

X44HBMP7

X44 Male by MPI™ Connector

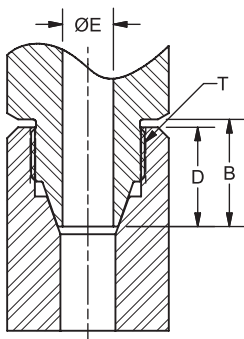


Parker Part No.	Inches				Working Pressure (PSIG)	
	Medium Pressure Connection	MPI™ Size	A	D		W Hex
9-9 X44HBMP7	9/16	9/16	3.20	1.54	1-1/16	15,000
9-12 X44HBMP7	9/16	3/4	3.98	2.19	1-3/8	15,000
12-9 X44HBMP7	3/4	9/16	3.15	1.35	1-1/4	15,000
12-12 X44HBMP7	3/4	3/4	3.89	1.96	1-3/8	15,000

Dimensions in inches are for reference only, subject to change.

Medium Pressure Instrument Fittings

X44 Adapter Assembly



Size	T Thread	B	D Insertion Depth	ØE	Assembly Torque
9	7/8-14	0.91	0.84	0.38	80 ft-lb
12	1-1/8-12	1.05	0.98	0.50	165 ft-lb

Dimensions in inches are for reference only, subject to change.