



aerospace  
climate control  
electromechanical  
filtration  
fluid & gas handling  
hydraulics  
pneumatics  
process control  
sealing & shielding



# Airline Accessories



ENGINEERING YOUR SUCCESS.



**WARNING – USER RESPONSIBILITY**

**FAILURE OR IMPROPER SELECTION OR IMPROPER USE OF THE PRODUCTS DESCRIBED HEREIN OR RELATED ITEMS CAN CAUSE DEATH, PERSONAL INJURY AND PROPERTY DAMAGE.**

- This document and other information from Parker-Hannifin Corporation, its subsidiaries and authorized distributors provide product or system options for further investigation by users having technical expertise.
- The user, through its own analysis and testing, is solely responsible for making the final selection of the system and components and assuring that all performance, endurance, maintenance, safety and warning requirements of the application are met. The user must analyze all aspects of the application, follow applicable industry standards, and follow the information concerning the product in the current product catalog and in any other materials provided from Parker or its subsidiaries or authorized distributors.
- To the extent that Parker or its subsidiaries or authorized distributors provide component or system options based upon data or specifications provided by the user, the user is responsible for determining that such data and specifications are suitable and sufficient for all applications and reasonably foreseeable uses of the components or systems.

1



2

**Parker Hannifin Corporation**  
Electric Motion and Pneumatic Division - Europe

PDE2566TCUK

## Index

---

Description	Page n°
Quick exhaust valves P4Q	4
Quick exhaust valves SV	5
Non Return Valves VB	6 - 7
Shuttle Valves	8
Back Pressure Sensors	9 - 10
Speed Flow Control Valves	11
Pressure Switches	12 - 13
Exhaust Silencers	14 - 16
Strainers	17 - 18



PDE2566TCUK  
**Quick exhaust valves**

# P4Q/ORB

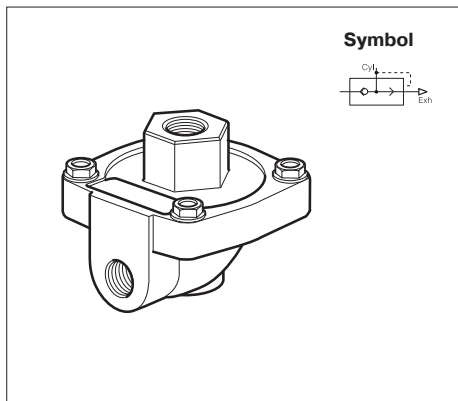
- Increases piston speeds, super sensitive diaphragm
- Extremely low operating differential
- Virtually stiction free
- May be used as differential shuttle valve
- High temperature option



### Operating information

Operating pressure:	0,2 to 10 bar
Operating temperature (Standard):	- 10°C to +80°C
Operating temperature (High):	- 10°C to +180°C
Body material:	Aluminium
Diaphragm material (Standard):	Nitrile
Diaphragm material (High):	Fluorocarbon

### Standard version

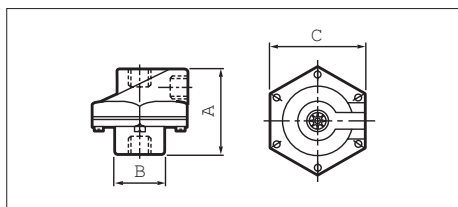


Port Size	Cv Rating	Weight kg	Order Code
G1/4	2,3	0,20	<b>P4Q-BA12</b>
G3/8	3,6	0,18	<b>P4Q-BA13</b>
G1/2	6,6	0,50	<b>P4Q-CA14</b>
G3/4	7,3	0,44	<b>P4Q-CA16</b>

### High temperature version

Port Size	Cv Rating	Weight kg	Order Code
G1/4	2,3	0,20	-
G3/8	3,6	0,18	<b>P4Q-BV13</b>
G1/2	6,6	0,50	<b>P4Q-CV14</b>
G3/4	7,3	0,44	<b>P4Q-CV16</b>

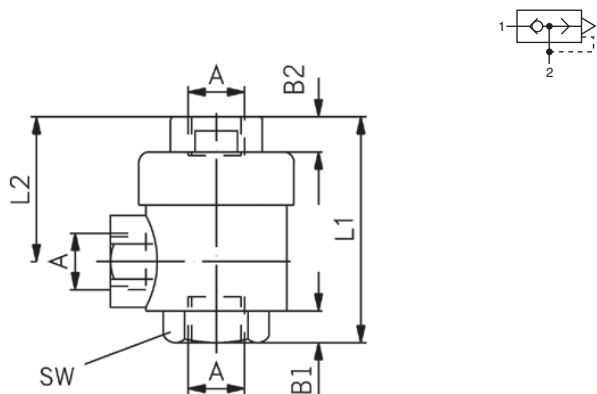
### Dimensions (mm)



Port Size	A	B	C
G1/4	52	25	62
G3/8	52	25	62
G1/2	73	38	86
G3/4	73	38	86

**Characteristics** Pressures quoted as gauge pressure

Characteristics	Symbol	Unit	Description				
<b>General features</b>							
Type			Poppet valve				
Mounting			Directly in tubing				
Tube connection			Thread				
Port size			G1/8	G1/4	G3/8	G1/2	G3/4
Gewicht (Masse)		kg	0.086	0.147	0.150	0.314	0.450
Installation			In any position				
Ambient- and Medium temperature range	$T_{min}$ $T_{max}$	°C °C	-18 +70	Note: When using below freezing point (0 °C) it is necessary to consult us			
<b>Material</b>							
- Housing			Brass nickel-plated				
- Membrane			Synthetic material				
Medium			Filtered compressed air				
Lubrication			Oil mist lubrication compatible with Buna N				
<b>Pneumatische characteristics</b>							
Nominal pressure	$p_n$	bar	6				
Operating pressure range	$p_{min}$	bar	0.3				
	$p_{max}$	bar	10				
Nominal flow 1 2	$Q_N$	l/min	680	1200	2300	3400	3200
Nominal flow 2 3	$Q_N$	l/min	1100	2100	4900	6100	8750

**Dimensions (mm)**

**Dimensions (mm) and order instructions**

Type	A	B1	B2	L1	L2	SW	Order Code
SV-06-2	G1/8	6.5	6.5	42.0	27	15	PD39152
SV-08-2	G1/4	9.5	9.0	53.0	35	19	PD39153
SV-10-2	G3/8	9.5	9.5	55.5	36	21	PD39154
SV-15-2	G1/2	13.5	13.0	72.0	43	26	PD39155
SV-20-2	G3/4	18.0	18.0	88.0	55	32	PD39156



PDE2566TCUK  
**Non return valves**

VB

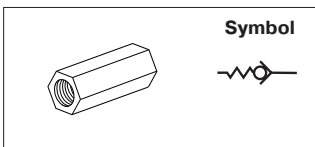
- Aluminium bodies
- Long life
- Low opening pressure
- Full flow in one direction only



**Operating information**

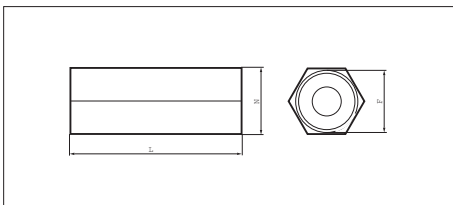
Operating pressure: 0,1 to 10 bar  
 Operating temperature: -20°C to +70°C  
 Body material: Anodised aluminium  
 Seal material: Nitrile

**VB - Aluminium**



Port size	Weight kg	Order Code
G1/8	0,01	<b>VB12-Q-NQ-5</b>
G1/4	0,01	<b>VB22-Q-NQ-5</b>
G1/2	0,05	<b>VB42-Q-NQ-5</b>

**Dimensions (mm)**



Order Code	F	L	N
<b>VB12-Q-NQ-5</b>	G1/8	31	14
<b>VB22-Q-NQ-5</b>	G1/4	40	17
<b>VB42-Q-NQ-5</b>	G1/2	59	27



Parker Hannifin Corporation  
 Electric Motion and Pneumatic Division - Europe

## Non return Valves

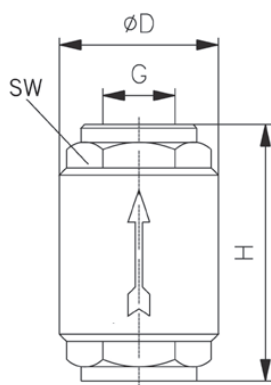
RV9 series check valves are designed for continuous flow (not suitable for pulsating flow).

- Suitable for:
- 100% oxygen
  - natural gas
  - vacuum



Characteristics		Pressures quoted as gauge pressure						
Characteristics	Symbol	Unit	Description					
<b>General features</b>								
Type			Spring loaded check valve					
Mounting			Directly in tubing					
Tube connection			Thread					
Port size			G3/8	G1/2	G3/4	G1	G11/4	G11/2
Weight (mass)		kg	0.18	0.19	0.27	0.49	0.74	0.98
<b>Installation</b>								
In any position								
Ambient- and Medium temperature range	$T_{min}$ $T_{max}$	°C	-20 +110 air		0 +90° water		-20 +60 gas	
Note: When using below freezing point (0°C) it is necessary to consult us								
Medium	Filtered compressed air, cold and warm water, various oils							
Lubrication	Oil mist lubrication compatible with Buna N							
Material	Housing: brass Valve head: stainless steel Seal: synthetic rubber							
<b>Pneumatic characteristics</b>								
Operating pressure range at +20°C	$p_{max}$	bar	25	25	25	25	18	18
<b>Flow direction</b>								
In one direction								

### Dimensions (mm) and order instructions



Type *	G	ØD	H	SW	Order Code
RV9-10	G3/8	34.5	54	23	PD 36114
RV9-15	G1/2	34.5	57	27	PD 36335
RV9-20	G3/4	41.5	64	33	PD 36336
RV9-25	G1	48.0	75	40	PD 36337
RV9-32	G11/4	60.5	82	50	PD 36338
RV9-40	G11/2	71.0	93	55	PD 36339

\* other sizes on request



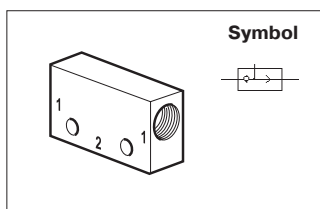
PDE2566TCUK  
**Shuttle valves**

- Allows two separate signals to be applied to the air pilot
- 0,6 bar differential, Viton seals as standard



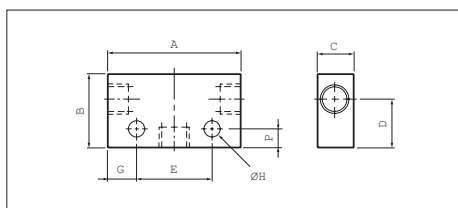
**Operating information**

Operating pressure:	1,3 to 17 bar
Flow:	See table below
Operating temperature:	-10°C to +60°C
Body material M5 and G1/8:	Aluminium
Body material G1/4	Zinc
Shuttle ball material:	Plastic



Port Size	Qmax input at 6 bar, l/min	Weight kg	Order Code
M5	36	0,040	<b>M33005</b>
G1/8	509	0,100	<b>B43005B</b>
G1/4	1076	0,172	<b>B53005A</b>

**Dimensions (mm)**



Port Size	A	B	C	D	E	F	G	H
M5	27,5	24	15	16,0	15	6	6,3	3,2
G1/8	44,0	24	15	16,0	25	6	9,5	4,5
G1/4	52,0	30	22	20,5	35	10	8,5	5,5



**PDE2566TCUK**  
**Back pressure sensors - Modular**

PWS

- Detects stoppage of a cylinder due to a pressure drop in the exhaust chamber
- For direct mounting to cylinders
- Choice of pneumatic, electrical or electronic output
- Wide range of sizes



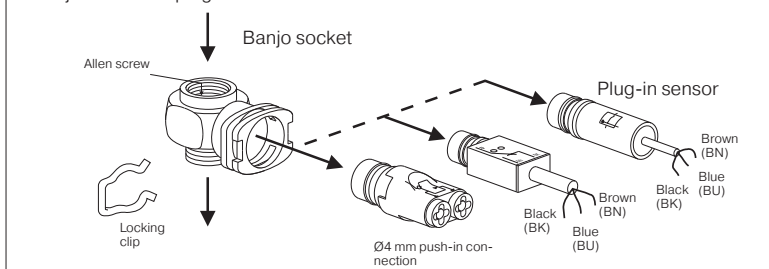
**Operating information**

Operating pressure:	0 to 10 bar
Permissible fluids:	Air or neutral gas 50micron or filtration, lubricated or not
Operating temperature:	-15°C to +60°C
Storage temperature:	-40°C to +70°C
No. of operations with dry air at 6 bar 20°C 1 Hz:	10 million
Maximum operating frequency:	10 Hz
Output characteristics:	Pneumatic: Flow at 6 bar 90l/mn Electrical: C/contact 2,5A/250V AC, 5W 48V DC Electronic: PNP N/C or N/O 10 to 30V 75 mA DC
Maximum connecting torque:	M5 = 1Nm; 1/8 = 8Nm; 1/4 = 12Nm; 3/8 = 30Nm; 1/2 = 35Nm
Body material:	Thermo plastic
Connection thread:	Brass

**Dimensions and piloting pressures next page**

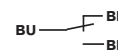
**Assembly**

All back pressure sensors are a combination of two distinct parts: a banjo socket + a plug-in sensor.



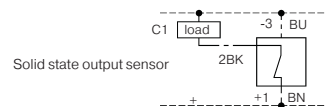
**Connection**

Output signal connection

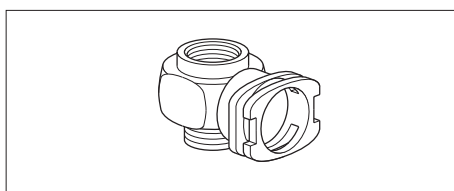


Pneumatic output sensor: Ø4 mm push-in

Electric output sensor

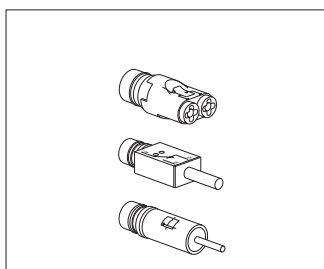


**Banjo Sockets**



Thread Size for Cylinder Port	Female Thread	Tool Required	Weight Kg	Order Code
M5	M5	8mm flat spanner	0,04	<b>PWS-B155</b>
G1/8	G1/8	5mm Allen key	0,04	<b>PWS-B188</b>
G1/4	G1/4	8mm Allen key	0,05	<b>PWS-B199</b>
G3/8	G3/8	10mm Allen key	0,07	<b>PWS-B133</b>
G1/2	G1/2	12mm Allen key	0,11	<b>PWS-B122</b>

**Plug-in Sensors**



Sensing function	Output function	Output Connection	Output characteristics	Weight kg	Order Code
Exhaust back pressure decay	Pneumatic	Push-in Ø4mm	NO valve flow rate at 6 bar 90 l/mn	0,09	<b>PWS-P111</b>
	Electrical ~Ve = 3A	3 wires 0,5mm <sup>2</sup> length 2m	CO contact 12 to 230V ~ / 10VA* 12 to 48 VDC/5W*	0,08	<b>PWS-M1012</b>
	Solid state	3 wires 0,1mm <sup>2</sup> length 2m	PNP type NC 10/30VDC** 75 mA, NO	0,07	<b>PWS-E101</b>
				0,07	<b>PWS-E111</b>

\* Suitable for low currents : 250 V ~ / 4 mA ; 24 VDC / 10 mA \*\* Including ripple



**Parker Hannifin Corporation**  
 Electric Motion and Pneumatic Division - Europe

PDE2566TCUK

## Back pressure sensors - Mono block

PWS

- Detects stoppage of a cylinder due to a pressure drop in the exhaust chamber
- Single unit design
- For direct mounting to cylinders
- Pneumatic output
- Wide range of sizes

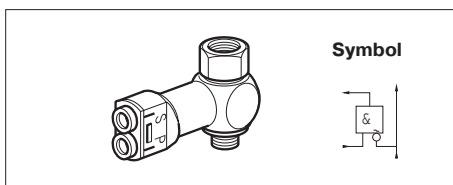


### Operating information

Operating pressure:	0 to 10 bar
Permissible fluids:	Air or neutral gas 50micron or filtration, lubricated or not
Operating temperature:	-15°C to +70°C
Storage temperature:	-20°C to +70°C
No. of operations with dry air at 6 bar 20°C 1 Hz:	10 million
Maximum operating frequency:	1 Hz
Output characteristics:	Flow @ 6 bar 90l/m
Maximum connecting torque:	M5 = 1Nm; 1/8 = 8Nm; 1/4 = 12Nm; 3/8 = 30Nm; 1/2 = 35Nm
Body material:	Zinc alloy / Thermo plastic
Connection thread:	Brass

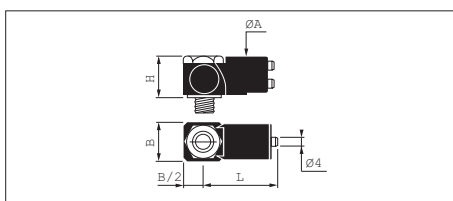
Plug-in & Monoblock back pressure sensors	Pilot	Depilot
	operating pressure	operating pressure
<b>PWS-P111</b>	6bar	6bar
<b>PWS-M1012</b>	4,4	0,4
<b>PWS-E101 &amp; E111</b>	1,5	0,6
<b>PWS-C</b>	1,5	0,6
	1,6 ±0,2	0,3

### Back Pressure Sensor for Cylinder Mounting



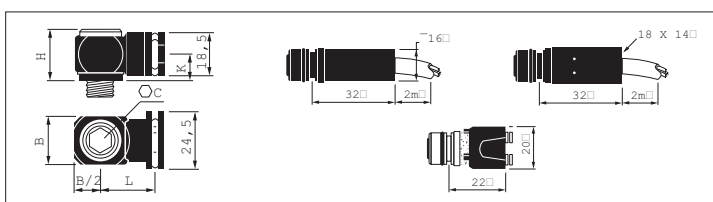
Thread Cylinder Port	Thread Supply Port	Bore Ømm	Weight kg	Order Code
M5	M5	2	0,10	<b>PWS-C5145</b>
G1/8	G1/8	5	0,11	<b>PWS-C5148</b>
G1/4	G1/4	7	0,10	<b>PWS-C5149</b>
G3/8	G3/8	10	0,17	<b>PWS-C5143</b>
G1/2	G1/2	14	0,15	<b>PWS-C5142</b>

### Back Pressure Sensors - Mono block - Dimensions (mm)



Order Code	ØA	B	H	L
<b>PWS-CS145</b>	19	11,0	16,0	42
<b>PWS-CS148</b>	22	16,5	29,0	40
<b>PWS-CS149</b>	22	23,5	26,0	43
<b>PWS-CS143</b>	22	23,5	36,5	43
<b>PWS-CS142</b>	22	32,0	29,5	48

### Back Pressure Sensors - Modular - Dimensions (mm)



Order Code	C	B	H	K	L
<b>PWS-B155</b>	8	11	16,5	10	17
<b>PWS-B188</b>	5	16	20,0	10	20
<b>PWS-B199</b>	8	21	20,0	10	22
<b>PWS-B133</b>	10	28	22,0	12	25
<b>PWS-B122</b>	12	33	26,0	14	26



Parker Hannifin Corporation  
Electric Motion and Pneumatic Division - Europe

PDE2566TCUK  
Speed flow control valves

VQB

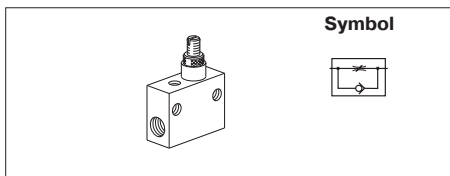
- Integral mounting holes
- Screw driver adjustable
- Panel mounting option



**Operating information**

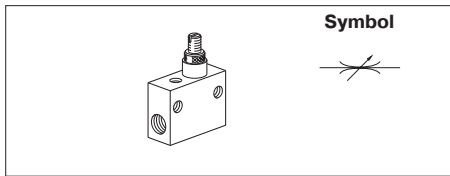
Working pressure                      Max 10 bar  
Working temperature                -20 °C to +70 °C

**Flow Control Valves with By-pass**



Thread	Number of turns	Qmax input at 6 bar, l/min	Weight kg	Order Code
G1/8	13	72	0,03	<b>VQB12-Q-0X-5*</b>
G1/8	13	240	0,03	<b>VQB12-Q-0-5</b>
G1/4	13	1320	0,07	<b>VQB22-Q-0-5</b>
G1/2	13	3600	0,27	<b>VQB42-Q-0-5</b>

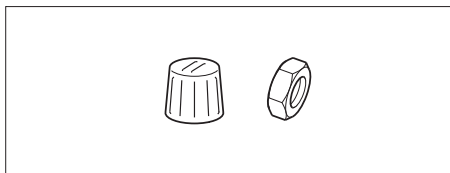
**Flow Control Valves with By-directional Control**



Thread	Number of turns	Qmax input at 6 bar, l/min	Weight kg	Order Code
G1/8	13	72	0,03	<b>VQB12-0X-5*</b>
G1/8	13	240	0,03	<b>VQB12-0-5</b>
G1/4	13	1320	0,07	<b>VQB22-0-5</b>
G1/2	13	3600	0,26	<b>VQB42-0-5</b>

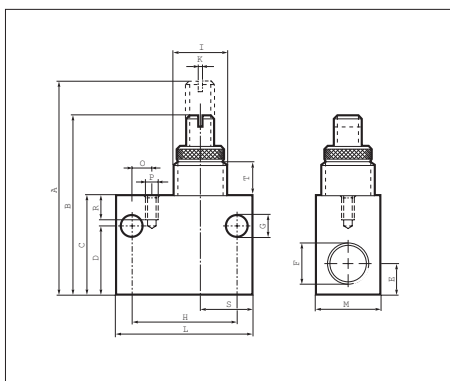
\* Extra fine adjustment

**Knob and nut for Panel Mounting**



To Suit	Weight kg	Order Code
VQB12	0,008	<b>9128177212</b>
VQB22	0,014	<b>9128177222</b>
VQB42	0,037	<b>9128177242</b>

**Flow Control Valves - Dimensions (mm)**



Order Code	A	B	C	D	E	F	G	H	I
<b>VQB12-(Q)-0-5</b>	49	42	22	15	6,5	G1/8	5,8	24	M12x1
<b>VQB12-(Q)-0-5</b>	49	42	22	15	6,5	G1/8	5,8	24	M12x1
<b>VQB22-(Q)-0-5</b>	64	53	30	21	8,5	G1/4	7,0	32	M16x1
<b>VQB42-(Q)-0-5</b>	99	85	50	36	16,5	G1/2	7,0	50	M24x1,5

Order Code	K	L	M	O	P	R	S	T
<b>VQB12-(Q)-0-5</b>	1,2	32	15	-	-	-	13,5	8,8
<b>VQB12-(Q)-0-5</b>	1,2	32	15	-	-	-	13,5	8,8
<b>VQB22-(Q)-0-5</b>	1,2	42	20	6,0	M4	7	16,0	10,0
<b>VQB42-(Q)-0-5</b>	1,8	62	30	19,5	M4	7	20,5	15,2

PDE2566TCUK  
Pressure Switches



Make contact



Break contact

**Switching function:**

- Make contact**  
– closes the circuit when the set pressure is reached
- Break contact**  
– interrupts the circuit when the set pressure is reached

**Characteristics**

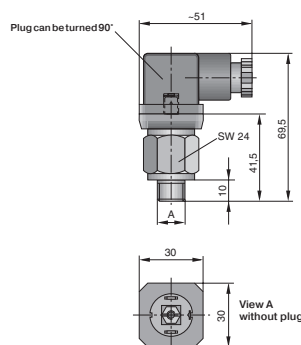
Pressures quoted as gauge pressure

Characteristics	Symbol	Unit	Description
Type			Break contact or make contact – see table at the bottom
Setting range	$p_{min/max}$	bar	See table at the bottom
Safety pressure relief	$p_{max}$	bar	300
Port size			G1/8, G1/4
Weight (mass)		kg	0.090
<b>Material</b>			
– Housing			Passivated steel
– Diaphragm			Buna N
Medium and ambient temperature range	$T_{max}$	°C	+100
Switch back difference		%	Max. 5 – 15
Voltage	U	V	Max. 48
Current	I	A	0.5
Electrical connection			Plug contacts, plug
Degree of protection		IP	65 with plug
Switching frequency		s/min	Max. 200

**Order instructions**

Type	Port size A	Function	Setting range [bar]	Order Code
PR / 0.1-1 NC ST 1/4 48	G1/4	Break contact	0.1-1	KL3439
PR / 0.1-1 NO ST 1/4 48	G1/4	Make contact	0.1-1	KL3440
PR / 1-10 NC ST 1/8 48	G1/8	Break contact	1-10	KL3437
PR / 1-10 NC ST 1/4 48	G1/4	Break contact	1-10	KL3436
PR / 1-10 NO ST 1/8 48	G1/8	Make contact	1-10	KL3438
PR / 1-10 NO ST 1/4 48	G1/4	Make contact	1-10	KL3435

**Dimensions (mm)**



Parker Hannifin Corporation  
Electric Motion and Pneumatic Division - Europe

PDE2566TCUK

## Pressure Switches



Make contact



Break contact

### Switching function:

- Make contact  
– closes the circuit when the set pressure is reached
- Break contact  
– interrupts the circuit when the set pressure is reached

### Characteristics

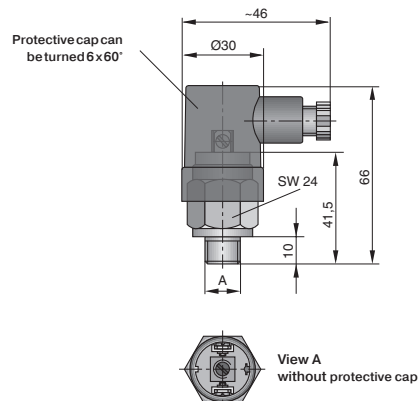
Pressures quoted as gauge pressure

Characteristics	Symbol	Unit	Description
Type			Break contact oder Make contact – see table at the bottom
Setting range	$p_{\min/\max}$	bar	See table at the bottom
Safety pressure relief	$p_{\max}$	bar	300
Port size			G1/8, G1/4
Weight (mass)		kg	0.075
Material			
– Housing			Passivated steel
– Diaphragm			Buna N
Mediums- und Ambient temperature range	$T_{\max}$	°C	+100
Switch back difference		%	Max. 5 – 15
Voltage	U	V	Max. 48
Current	I	A	0.5
Electrical connection			Flat pin plug, protective cap
Degree of protection		IP	65 with protective cap
Switching frequency		s/min	200

### Order instructions

Type	Port size A	Function	Setting range [bar]	Order Code
PR / 0.2-1 NO SR 1/4 48	G1/4	Make contact	0.2-1	KL3445
PR / 0.1-1 NC SR 1/4 48	G1/4	Break contact	0.1-1	KL3454
PR / 0.1-1 NO SR 1/4 48	G1/4	Make contact	0.1-1	KL3455
PR / 1-10 NC SR 1/8 48	G1/8	Break contact	1-10	KL3452
PR / 1-10 NC SR 1/4 48	G1/4	Break contact	1-10	KL3451
PR / 1-10 NO SR 1/8 48	G1/8	Make contact	1-10	KL3453
PR / 1-10 NO SR 1/4 48	G1/4	Make contact	1-10	KL3450

### Dimensions (mm)



PDE2566TCUK  
**Exhaust silencers**

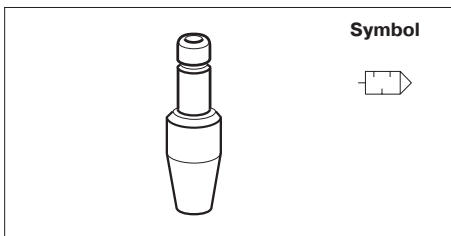
- Sintered metal
- All metal versions for heavy duty applications
- Versions with push-in connections
- High noise level reduction
- Low back pressure generation



**Operating and additional information**

Plastic	Working temperature: -10°C to +80°C		
	Efficiency 92%		
Metal	Working temperature: -10°C to +74°C	Working pressure	up to 17 bar

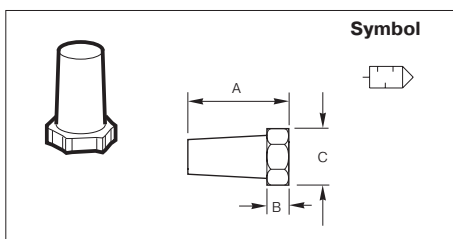
**Push-in Series**



Port mm	Height on Push-in	Weight g	Order Code
4	20,0	0,040	<b>PXC-X14</b>
6	35,5	0,025	<b>PZC-S1006</b>
8	34,0	0,030	<b>PZC-S1008</b>

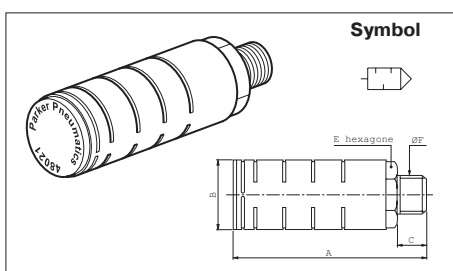
PDE2566TCUK  
**Exhaust silencers**

### Sintered Bronze Series



Port mm	A	Ø B	A/F C	Weight g	Order Code
G1/8	15	8	13	0,060	9721900404

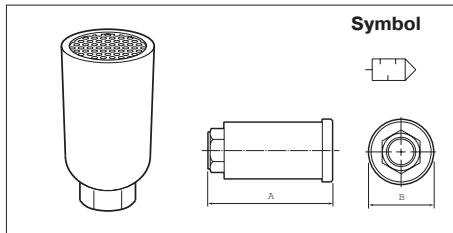
### Self Cleaning, 48 series



Port thread	A	Ø B	C	A/F E	Weight g	Order Code
1/8	52	16	8	12	0,010	48021000
1/4	53	22,5	10	17	0,018	48041000
3/8	78	32	12,7	24	0,042	48061000
1/2	78	32	14	24	0,042	48081000
3/4	120	39	16	33	0,082	48121000
1	120	39	20	33	0,082	48161000

ESB Series with BSPT(R) threads  
 ES with NTP threads

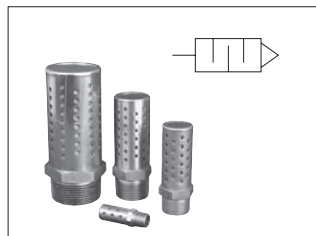
### Heavy Duty Series



Port Female	A	Ø B	C	Weight g	Order Code
G3/8	83	37	-	0,124	P6M-MA13
G1/2	105	51	-	0,362	P6M-MA14
G3/4	143	73	-	0,670	P6M-MA16
G1	143	73	-	0.666	P6M-MA18

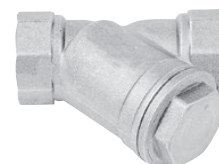
### Stainless Steel Mufflers Series

Corrosion resistant mufflers for harsh environments



Port Size	Construction	Threads	Dimensions In. (mm)		Order Code
			Width	Lenght	
1/4	Stainless Steel	Male. NPT	0.56 (14.2)	1.75 (44.5)	5500A2004
1/2	Stainless Steel	Male. NPT	0.87 (22.1)	2.75 (69.7)	5500A4004
1	Stainless Steel	Male. NPT	1.31 (33.3)	3.87 (98.3)	5500A6004
2	Nickel plated	Male. NPT	2.37 (60.2)	5.50 (139.7)	5500A9004*

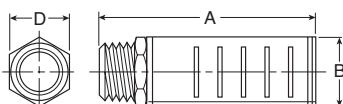
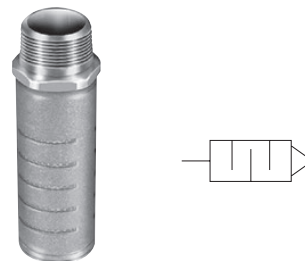
\* Nickel plated



PDE2566TCUK  
**Exhaust silencers**

### ES Series - Silencer

The silencer is designed to give superior performance in noise control with a minimum effect on air efficiency. "Trimline" design allows location in the tightest places without extra plumbing and fittings. Fits directly into the exhaust port of more than 90% of present commercial valves. Slotted body permits rapid discharge of air without undesirable back pressure. Unique nylon screen element resists dirt buildup or clogging.



#### Operating information

Operating pressure: 250 psig (Air) max.  
 Operating temperature:\* 0°F to 300°F

\* Ambient temperatures below freezing require moisture-free air. Ambient temperatures below freezing and above 180° require lubricants especially selected for suitability at these temperatures. Pneumatic valves should be used with filtered and lubricated air.

Pipe Thread	Flow scfm @ 100 psig inlet	Dimensions			Order Codes NPTF	BSPT (R)
		A	B	D		
1/8"	115	1.85	0.81	0.63	ES12MC	ESB12MC
1/4"	129	1.85	0.81	0.63	ES25MC	ESB25MC
3/8"	219	3.31	1.26	1.00	ES37MC	ESB37MC
1/2"	549	3.31	1.26	1.00	ES50MC	ESB50MC
3/4"	893	4.56	2.01	1.62	ES75MC	ESB75MC
1"	1,013	4.56	2.01	1.62	ES100MC	ESB100MC
1-1/4"	1,486	5.69	2.88	-	ES125MC	ESB125MC
1-1/2"	1,580	5.69	2.88	-	ES150MC	ESB150MC

Dimensions in mm



Parker Hannifin Corporation  
 Electric Motion and Pneumatic Division - Europe

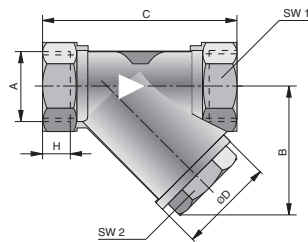
PDE2566TCUK  
**Strainers for tubings**

SFS

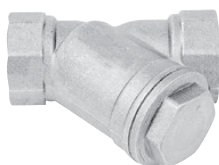
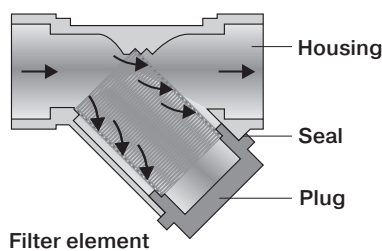
Characteristics			Pressures quoted as gauge pressure						
Characteristics	Symbol	Unit	Description						
General features									
Type	Filter element for solid particles								
Port size			G1/4	G3/8	G1/2	G1	G11/4	G11/2	G2
Weight (mass)		kg	0.170	0.155	0.165	0.460	0.690	1.010	1.535
Pore size		µm	45						
Installation	horizontal, sieve facing dows								
Medium and ambient temperature	$T_{min}$	°C	0						
			$T_{max}$	+150					
Material	Brass (Filter element: sinter bronze)								
Pneumatic characteristics									
Operating pressure range	$p_{min}$	bar	-1						
			$p_{max}$	+16					
Nominal flow <sup>1)</sup>	$Q_N$	l/min	1700	3700	7500	on request	on request	on request	on request
Recommended flow <sup>1)</sup>	Q	l/min	783	1320	2570	on request	on request	on request	on request

<sup>1)</sup> at 6 bar and  $\Delta p = 0,2$  bar

Dimensions in mm



**Operating principle:**  
 When air flows through the filter element, any large particles are retained. The pore size for the sinter- bronze filter element is 45 µm



PDE2566TCUK

## Strainers for tubings

### Dimension (mm)

Di- men- sion	Port size (A)								
	G1/8	G1/4	G3/8	G1/2	G3/4	G1	G11/4	G11/2	G2
ØD	8	8	10	15	20	25	32	40	50
B	40	40	40	40	50	60	68	75	90
C	55	55	55	58	70	90	96	106	126
H	10.0	10.0	10.3	10.5	12.0	17.0	17.5	17.5	20
SW 1	21	21	21	25	31	38	49	55	68
SW 2	20	20	20	20	27	32	35	38	46

### Order instructions

Port size	Strainers with sinter bronze filter element		Spare parts Sinter element (45 µm)	
	Type	Order Code	Type	Order Code
G1/4	SFS-1/4	KL 2001	SFSE-1/4	KL 2015
G3/8	SFS-3/8	KL 2002	SFSE-3/8	KL 2015
G1/2	SFS-1/2	KL 2003	SFSE-1/2	KL 2015
G3/4	SFS-3/4	KL 2004	SFSE-3/4	KL 2016
G1	SFS-1	KL 2005	SFSE-1	KL 2017
G11/4	SFS-1 1/4	KL 2006	SFSE-1 1/4	KL 2018
G11/2	SFS-1 1/2	KL 2008	SFSE-1 1/2	KL 2019
G2	SFS-2	KL 2008	SFSE-2	KL 2020





PDE2566UK 01/2023

[www.parker.com](http://www.parker.com)



**European Headquarters**  
La Tuilière 6, 1163 Etoy,  
Switzerland  
Tel: +41 21 821 85 00

Your authorized distributor

© 2022 Parker Hannifin Corporation. All rights reserved.