

**Technical Information**
**CV**

 Check  
Valves

**SH**

 Shuttle  
Valves

**LM**

 Load/Motor  
Controls

**FC**

 Flow  
Controls

**PC**

 Pressure  
Controls

**LE**

 Logic  
Elements

**DC**

 Directional  
Controls

**MV**

 Manual  
Valves

**SV**

 Solenoid  
Valves

**PV**

 Proportional  
Valves

**CE**

 Coils &  
Electronics

**BC**

 Bodies &  
Cavities

**TD**

 Technical  
Data

**General Description**

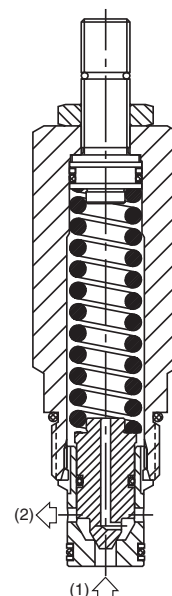
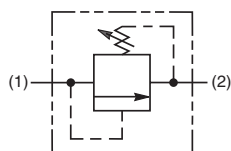
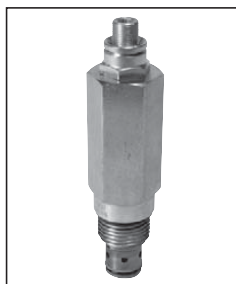
Direct Acting Poppet-Type Relief Valve. For additional information see Technical Tips on pages PC1-PC6.

**Features**

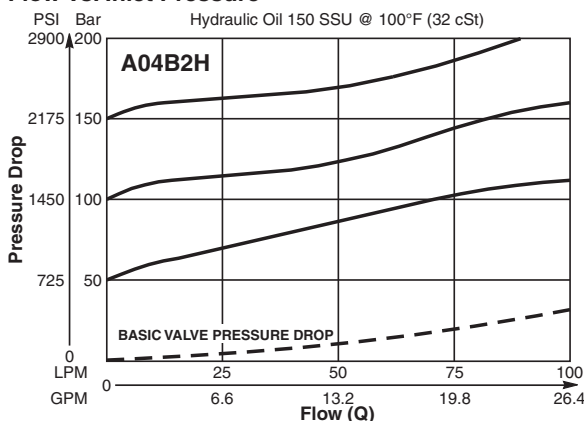
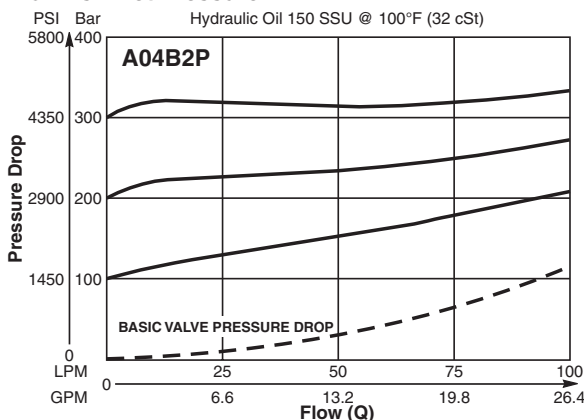
- Fast response with good stability
- Virtually leak-free
- Hardened working parts for maximum durability
- Adjustable, preset and tamperproof versions available
- Preset version is tamperproof and compact
- All external parts zinc plated

**Specifications**

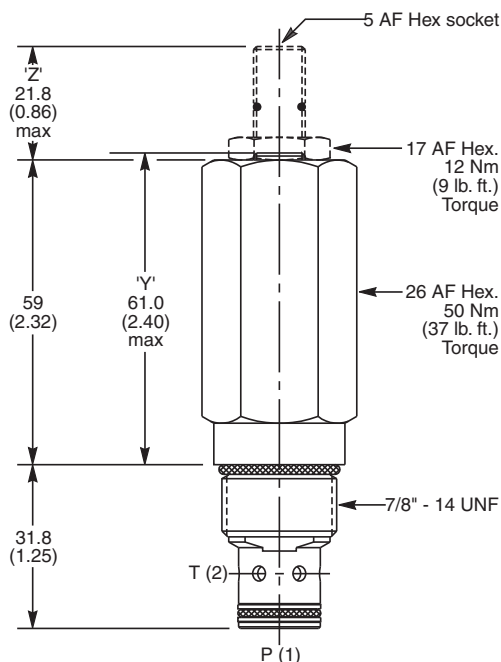
|                                      |  |
|--------------------------------------|--|
| <b>Rated Flow</b>                    | 100 LPM (26 GPM)   |
| <b>Maximum Inlet Pressure</b>        | H - 5-210 Bar (72-3000 PSI)<br>P - 5-420 Bar (72-6000 PSI)   |
| <b>Maximum Pressure Setting</b>      | 420 Bar (6000 PSI)   |
| <b>Maximum Tank Pressure</b>         | 420 Bar (6000 PSI)   |
| <b>Leakage at 150 SSU (32 cSt)</b>   | 5 drops/min.<br>@ 100 Bar (1450 PSI)   |
| <b>Cartridge Material</b>            | All parts steel. All operating parts hardened steel.   |
| <b>Operating Temp. Range/Seals</b>   | -40°C to +93.3°C (Nitrile)<br>(-40°F to +200°F)<br>-31.7°C to +121.1°C (Fluorocarbon)<br>(-25°F to +250°F) |
| <b>Fluid Compatibility/Viscosity</b> | Mineral-based or synthetic with lubricating properties at viscosities of 45 to 2000 SSU (6 to 420 cSt)     |
| <b>Filtration</b>                    | ISO Code 16/13,<br>SAE Class 4 or better   |
| <b>Approx. Weight</b>                | 0.28 kg (0.62 lbs.)  |
| <b>Cavity</b>                        | C10-2<br>(See BC Section for more details)   |
| <b>Form Tool</b>                     | Rougher None<br>Finisher NFT10-2F  |


**Performance Curves**

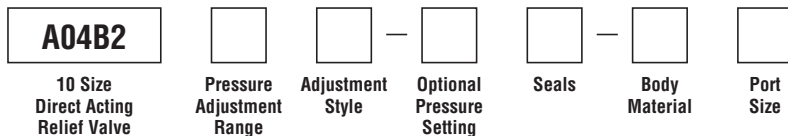
(Pressure rise through cartridge only)

**Flow vs. Inlet Pressure**

**Flow vs. Inlet Pressure**


**Dimensions** Millimeters (Inches)



**Ordering Information**



| Code | Pressure Adjustment Range   |
|------|-----------------------------|
| H    | 5 - 210 Bar (72 - 3000 PSI) |
| P    | 5 - 420 Bar (72 - 6000 PSI) |

| Code | Seals / Kit No.                       |
|------|---------------------------------------|
| N    | Nitrile, Buna-N (Std.) / (SK30503N-1) |
| V    | Fluorocarbon / (SK30503V-1)           |

| Code | Body Material |
|------|---------------|
| Omit | Steel         |
| A    | Aluminum      |

| Code | Adjustment Style / Kit No.    |
|------|-------------------------------|
| Z    | Screw Adjust (Std.)           |
| W    | Knob Adjust                   |
| T    | Tamper Resistant Cap (TC1130) |
| Y    | Non Adjustable Preset         |

| Code | Port Size      | Body Part No. |
|------|----------------|---------------|
| Omit | Cartridge Only |               |
| 4P   | 1/4" NPTF      | (B10-2-*4P)   |
| 6P   | 3/8" NPTF      | (B10-2-*6P)   |
| 8P   | 1/2" NPTF      | (B10-2-*8P)   |
| 6T   | SAE-6          | (B10-2-*6T)   |
| 8T   | SAE-8          | (B10-2-*8T)   |
| T8T  | SAE-8          | (B10-2-T8T)†  |
| 6B   | 3/8" BSPG      | (B10-2-6B)†   |

| Optional Pressure Setting   |  |
|---|--|
| Specify setting if required (Bar)   |  |
| Y Setting must be specified   |  |
| <b>A04B2H</b> Standard Setting:<br>100 Bar (1450 PSI)<br>@ 15 LPM (4.0 GPM) |  |
| <b>A04B2P</b> Standard Setting:<br>200 Bar (2900 PSI)<br>@ 15 LPM (4.0 GPM) |  |

\* Add "A" for aluminum, omit for steel.  
 † Steel body only.

**CV**

Check Valves

**SH**

Shuttle Valves

**LM**

Load/Motor Controls

**FC**

Flow Controls

**PC**

Pressure Controls

Logic Elements

**DC**

Directional Controls

**MV**

Manual Valves

**SV**

Solenoid Valves

**PV**

Proportional Valves

**CE**

Coils & Electronics

**BC**

Bodies & Cavities

**TD**

Technical Data

