



Axial Piston Pumps

Series P2 / P3
Variable Displacement

aerospace
climate control
electromechanical
filtration
fluid & gas handling
hydraulics
pneumatics
process control
sealing & shielding



ENGINEERING YOUR SUCCESS.

Contents

Description	Page
Technical Information.....	3
Ordering Code.....	4
Control Options “PA”.....	6
Control Options “RA”.....	7
Control Options “LA” and “LB”.....	8
Control Options “TA”, “TB”, “TC” and “TD”.....	9
P2 Typical Torque Control Characteristics.....	10
P3 Typical Torque Control Characteristics.....	11
Hydr. Generated Noise / Performance Curves.....	12
Ripple chamber.....	12
P2 Performance data	
P2 Noise characteristics at max./min. displacement.....	12
P2 Series - typical drive power at full displacement.....	13
P2 Series - typical compensated input power.....	14
P2 Series - typical efficiency at full displacement at 1800 rpm.....	15
P2 Series - typical flow vs. pressure.....	16
P2 Series - typical compensated case drain flow.....	17
P2 Series - typical inlet characteristics vs. speed at various percentage displacements.....	18
P2 Dimensions	
P2060 Mounting flange.....	19
P2060 Side port.....	20
P2060 Thru-drive option.....	21
P2075 Mounting flange.....	22
P2075 Side port.....	23
P2075 Thru-drive option.....	24
P2105 Mounting flange.....	25
P2105 Side port.....	26
P2105 Thru-drive option.....	27
P2145 Mounting flange.....	28
P2145 Side port.....	29
P2145 Thru-drive option.....	30
P2 Shaft options.....	32
Torque control dimensions.....	32
P3 Performance data	
P3 Noise characteristics at max./min. displacement.....	33
P3 Series - typical drive power at full displacement.....	33
P3 Series - typical compensated input power.....	34
P3 Series - typical efficiency at full displ. at 1800 rpm.....	34
P3 Series - typical flow vs. pressure.....	35
P3 Series - typical compensated drain flow.....	35
P3 Series - typical inlet characteristics vs. speed at various percentage displacements.....	36
P3 Dimensions	
P3105 Mounting flange.....	37
P3105 Side port.....	38
P3105 Thru-drive option.....	39
P3145 Mounting flange.....	40
P3145 Side port.....	41
P3145 Thru-drive option.....	42
P3 Shaft options.....	44
Torque control dimensions.....	44
General Installation Information	45
Multiple pump combinations.....	45
Fluid recommendations, Seals.....	46

Technical Features

Variable displacement, axial piston pumps for open circuit hydraulic systems

Available as standard (P2) or supercharged (P3) version

Optimized for mobile applications:

- Dedicated envelope design and unique port layout
- High self-priming speed
- Standard integrated pre-compression volume
- Heavy duty approval (size 105 and 145) for increased power density

Customer Benefits

- Cost saving installation by direct PTO mount
- High productivity by maximized output flow
- High altitude operation capability
- Low noise level and reduced flow ripple

P2 Series

P3 Series

Technical Data

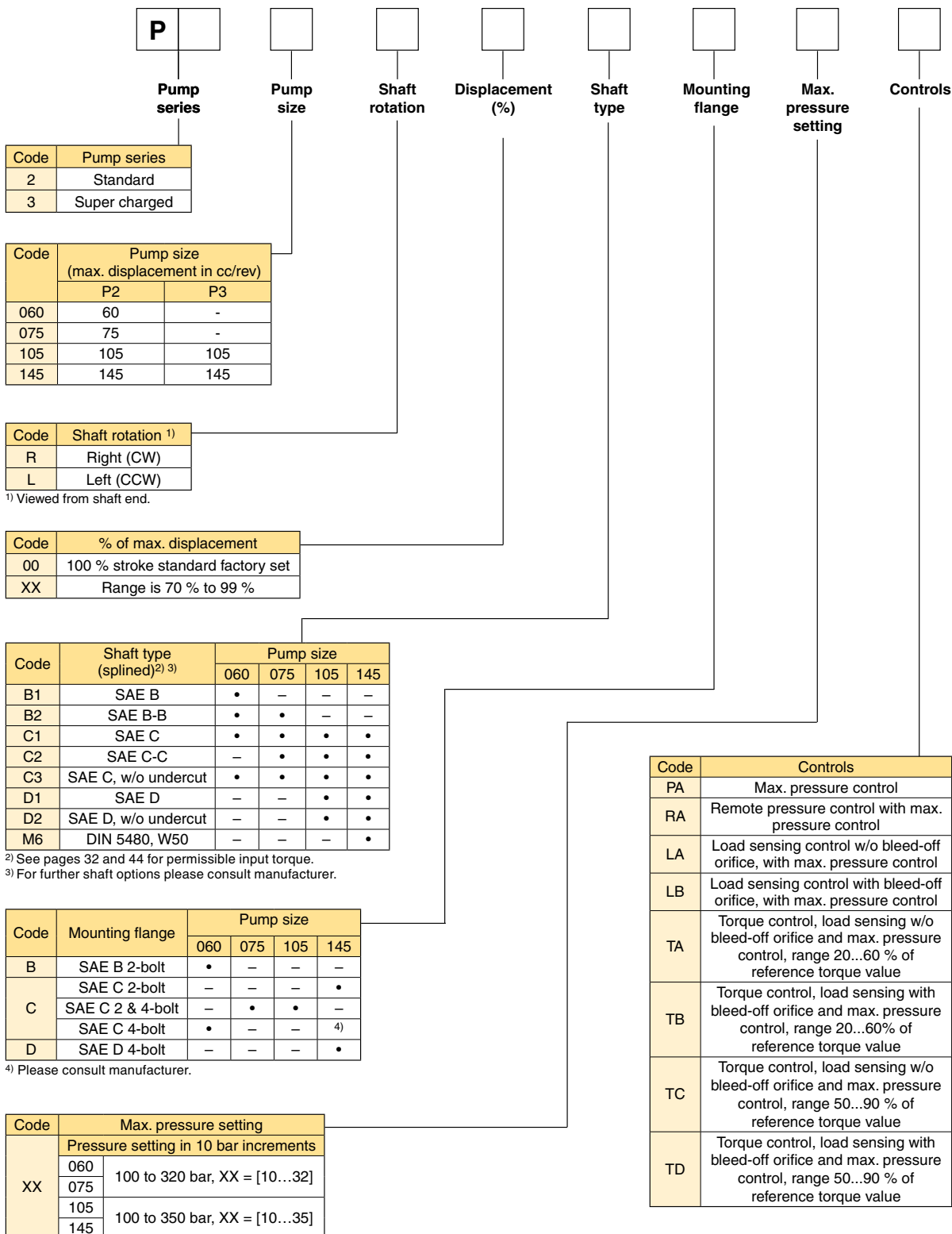
Frame size		P2 Series				P3 Series	
		P2060	P2075	P2105	P2145	P3105	P3145
Max. displacement	[cm ³ /rev]	60	75	105	145	105	145
Self-priming speed at 1 bar absolute inlet pressure ¹⁾	[rpm]	2800	2500	2300	2200	2600	2500
Nominal pressure ²⁾	[bar]	320	320	350	350	350	350
Min. inlet pressure, absolute ¹⁾	[bar]	0.8	0.8	0.8	0.8	0.8	0.8
Max. inlet pressure, absolute	[bar]	10	10	10	10	1.5	1.5
Max. case drain pressure, absolute	[bar]	1.5	1.5	1.5	1.5	1.5	1.5
Min. outlet pressure, absolute	[bar]	15	15	15	15	15	15
Noise level at full flow at 1800 rpm and 250 bar	[dB(A)]	74	76	78	80	78	80
Weight with load sense control	[kg]	37	44	63	78	62	76
Mass moment of inertia (at axis of shaft)	[kg m ²]	0.0061	0.0101	0.0168	0.0241	0.0177	0.0264

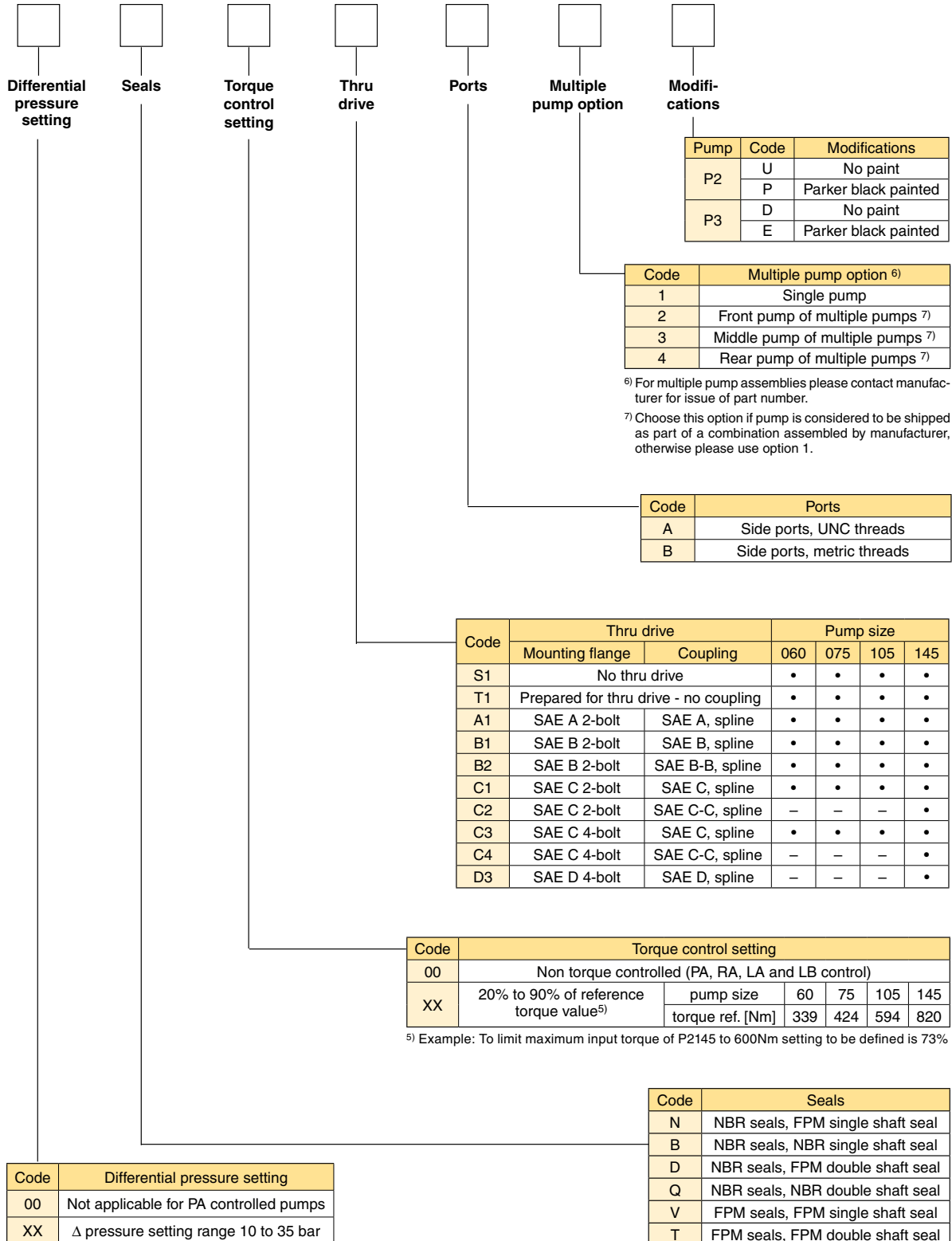
1) Detailed inlet characteristics can be taken from page 18 and 36

2) For maximum operating pressures exceeding above mentioned nominal ratings please consult manufacturer

Axial Piston Pumps Series P2/P3

Ordering Code

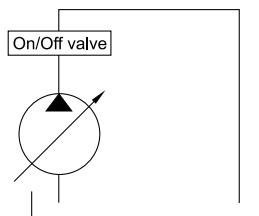




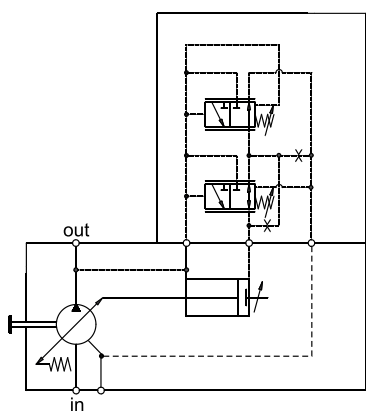
Pressure control

The pressure control is used to limit the maximum system pressure. The control acts such that full pump displacement is achieved unless the load pressure reaches the maximum setting of the control. If pump flow is restricted by the system valve, the pump will provide only the flow demanded, but at the maximum pressure setting of the compensator control. If the outlet flow is completely blocked, the pump will de-stroke to zero displacement and maintain the pressure at the setting of the compensator spring.

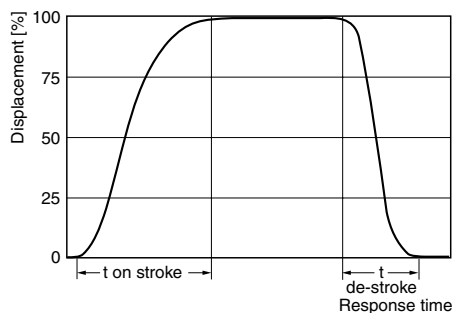
Response times of the pump are collected from a circuit as below by measuring the pumps swash angle movement at different pressures.



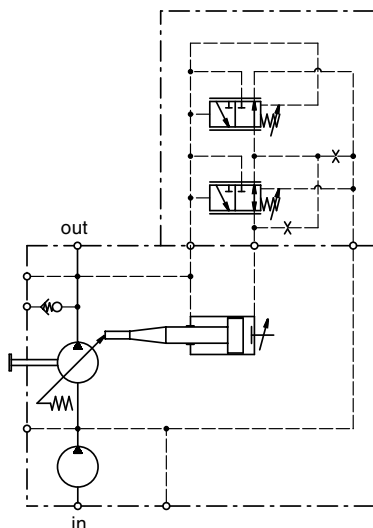
P2 Control schematics



Dynamic characteristic of flow control *



P3 Control schematics



	t on stroke [ms]		t de-stroke [ms]
	against 50 bar	against 220 bar	zero stroke 280 bar
P2060	70	65	30
P2075	70	70	30
P2105 / P3105	120	90	30
P2145 / P3145	160	130	30

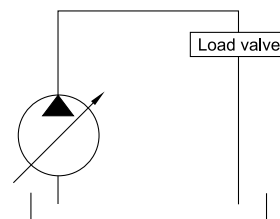
Compensator oil consumption PA control	max. 3.0 l/min
Pressure compensator adjusting range	Size 105 and 145 100 ... 350 bar
	Size 60 and 75 100 ... 320 bar
Hysteresis and repetitive accuracy	max. 3 bar

* Curve shown exaggerated

Remote pressure control

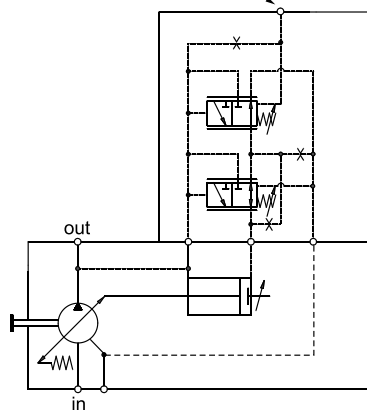
This control allows the pump pressure compensator setting to be adjusted from a remote relief valve. The control acts such that when full pump displacement is achieved the load pressure reaches the maximum setting of the remote relief valve. If pump flow is restricted by the system valve, the pump will provide only the flow demanded, but at the maximum pressure setting of the compensator control. If the outlet flow is completely blocked, the pump will de-stroke to zero displacement and maintain the pressure at the setting of the remote relief valve.

Response times of the pump are collected from a circuit as below by measuring the pumps swash angle movement at different pressures.



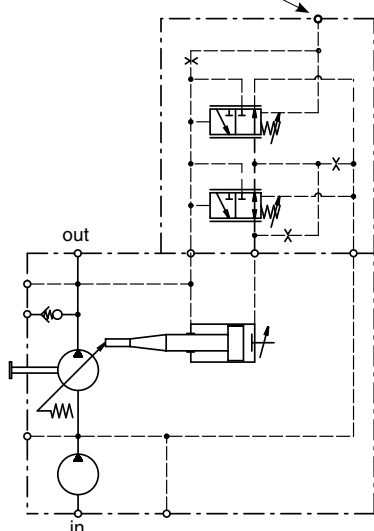
P2 Control schematics

X port (connect remote relief valve here)

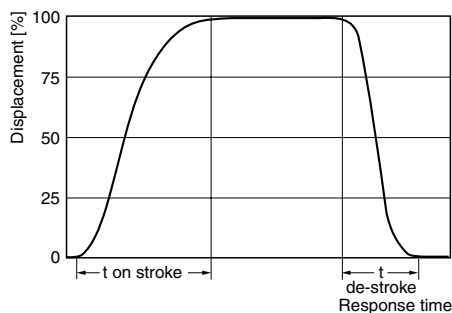


P3 Control schematics

X port (connect remote relief valve here)



Dynamic characteristic of flow control *



	t on stroke [ms]		t de-stroke [ms]	
	stand by to 250 bar	250 bar to stand by	50 bar to stand by	stand by
P2060	60	30	40	
P2075	80	35	40	
P2105 / P3105	100	40	45	
P2145 / P3145	120	45	50	

Compensator oil consumption 'RA control	max. 3.0 l/min
Pilot pressure valve oil consumption	max. 2.0 l/min
Delta P compensator adjusting range	10 ... 35 bar
Pressure compensator adjusting range	Size 105 and 145 100 ... 350 bar
	Size 60 and 75 100 ... 320 bar
Hysteresis and repetitive accuracy	max. 3 bar

* Curve shown exaggerated

Catalogue HY30-2800/UK
Control Options “LA” and “LB”

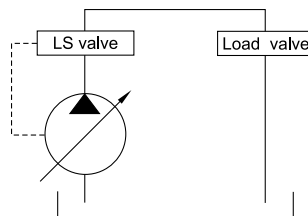
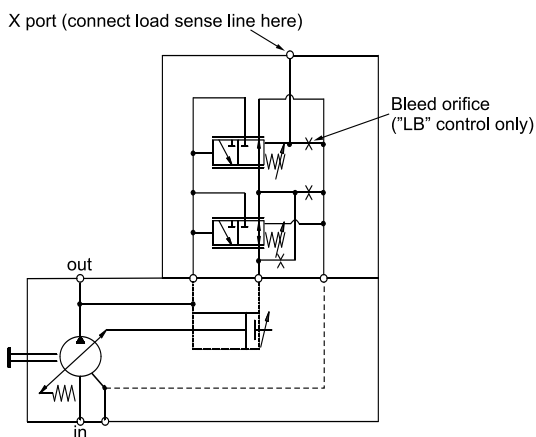
**Axial Piston Pumps
 Series P2/P3**

Load sensing control with maximum pressure control

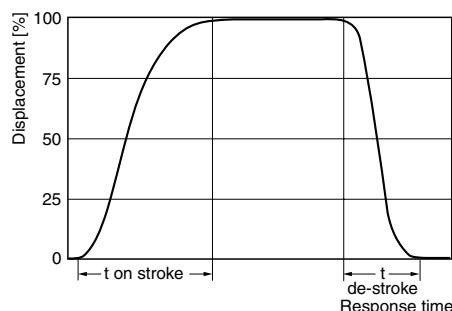
These controls feature load sensing and maximum pressure compensation. Load sense controls are used to match pump flow to system demands.

Response times of the pump are collected from a circuit as below by measuring the pumps swash angle movement at different pressures.

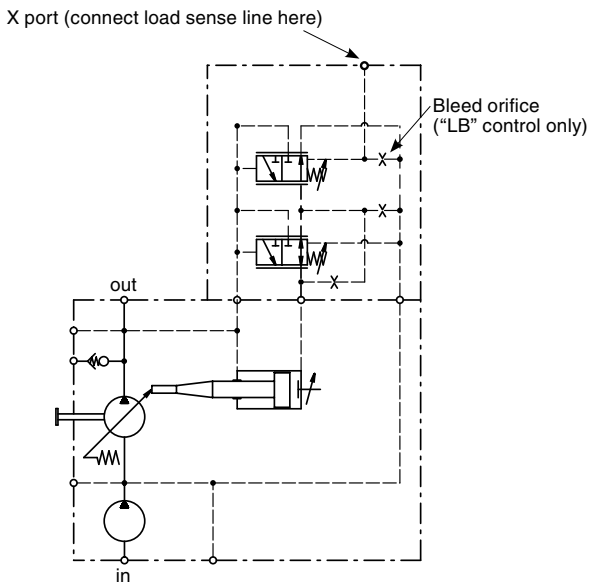
P2 Control schematics



Dynamic characteristic of flow control *



P3 Control schematics

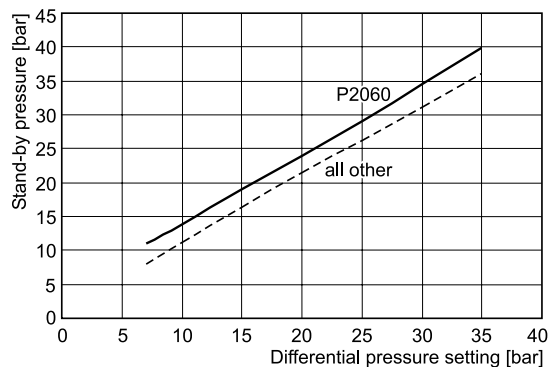


	t on stroke [ms]		t de-stroke [ms]	
	stand by to 250 bar	250 bar to stand by	50 bar to stand by	stand by
P2060	60	30	40	
P2075	80	35	40	
P2105 / P3105	100	40	45	
P2145 / P3145	120	45	50	

Compensator oil consumption LA control	max. 3.0 l/min
Compensator oil consumption LB control	max. 4.5 l/min
Load sensing compensator adjusting range	10 ... 35 bar
Pressure compensator adjusting range	Size 105 and 145 100 ... 350 bar
	Size 60 and 75 100 ... 320 bar
Hysteresis and repetitive accuracy	max. 3 bar

* Curve shown exaggerated

Differential setting vs. stand-by pressure

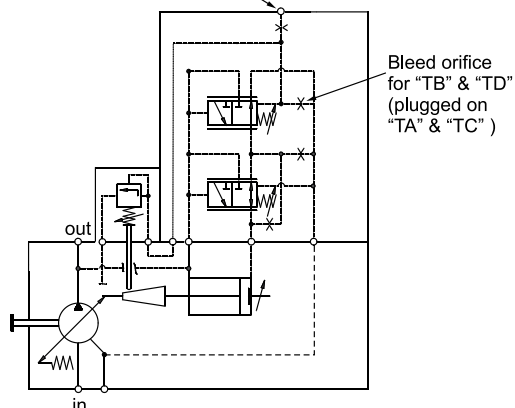


Torque limiting control with load sensing and maximum pressure control limiter

These controls provide the benefits of the load sensing and pressure limiting controls, plus the ability to limit the input torque the pump will draw. These controls are beneficial when the power available from the prime mover for the hydraulics is limited or the application power demand has both high flow/low pressure and low flow/high pressure duty cycles.

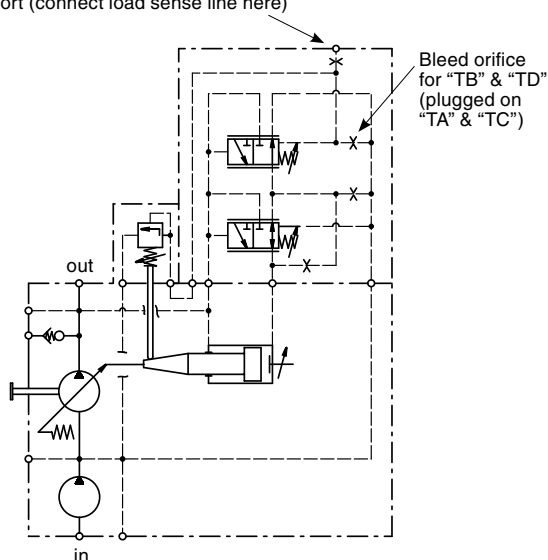
P2 Control schematics

X port (connect load sense line here)

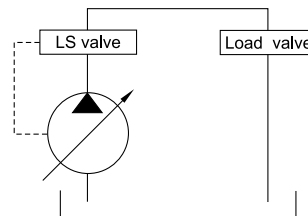


P3 Control schematics

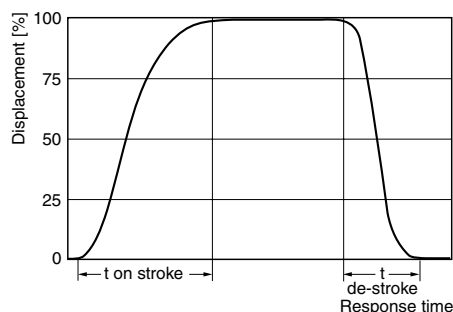
X port (connect load sense line here)



Response times of the pump are collected from a circuit as below by measuring the pumps swash angle movement at different pressures.



Dynamic characteristic of flow control *

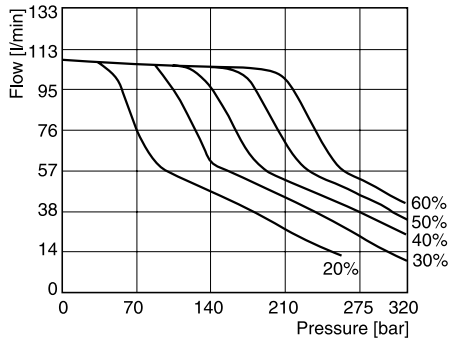


	t on stroke [ms]		t de-stroke [ms]	
	stand by to 250 bar	250 bar to stand by	50 bar to stand by	stand by
P2060	60	30	40	
P2075	80	35	40	
P2105 / P3105	100	40	45	
P2145 / P3145	120	45	50	

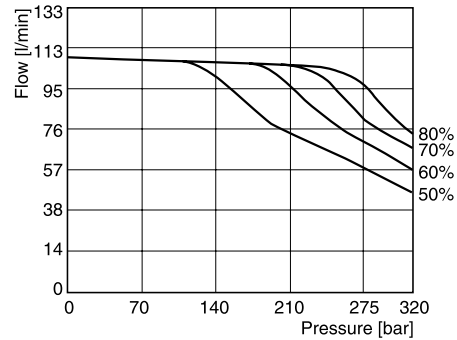
Compensator oil consumption TA, TC control	max. 3.0 l/min
Compensator oil consumption TB, TD control	max. 4.5 l/min
Torque control valve oil consumption	max. 2.0 l/min
Load sensing compensator adjusting range	10 ... 35 bar
Pressure compensator adjusting range	Size 105 and 145
	100 ... 350 bar
	Size 60 and 75
100 ... 320 bar	
Hysteresis and repetitive accuracy	max. 3 bar

* Curve shown exaggerated

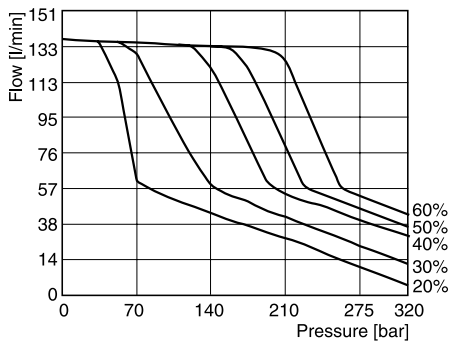
P2060 - 20...60 % Torque (1800 rpm)



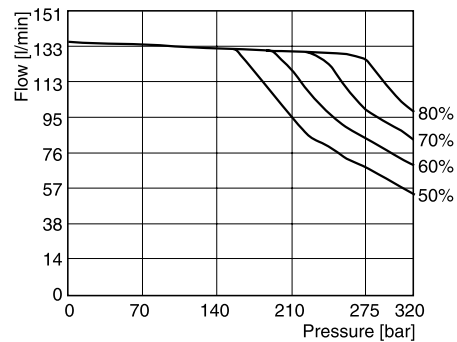
P2060 - 50...90 % Torque (1800 rpm)



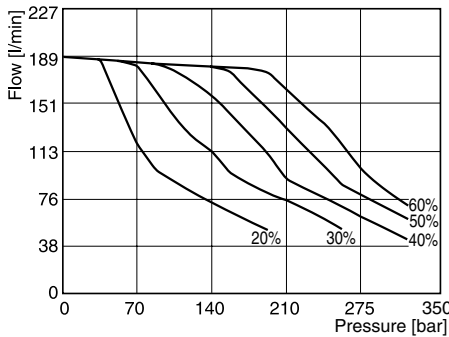
P2075 - 20...60 % Torque (1800 rpm)



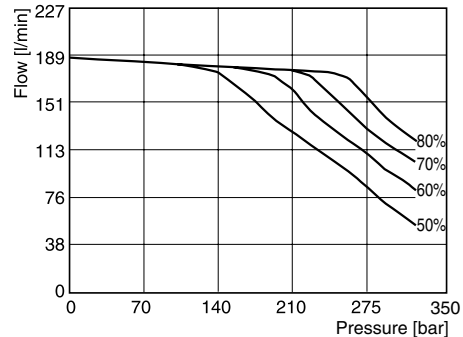
P2075 - 50...90 % Torque (1800 rpm)



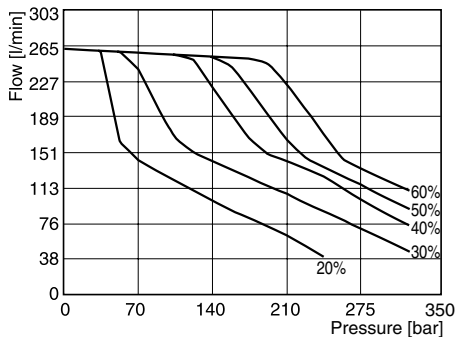
P2105 - 20...60 % Torque (1800 rpm)



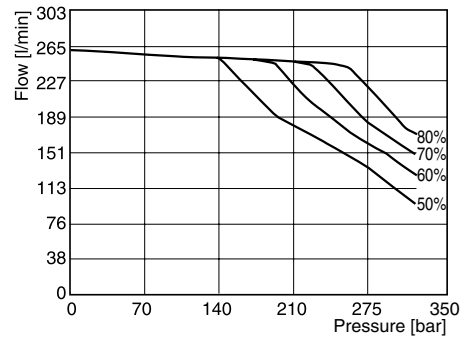
P2105 - 50...90 % Torque (1800 rpm)



P2145 - 20...60 % Torque (1800 rpm)

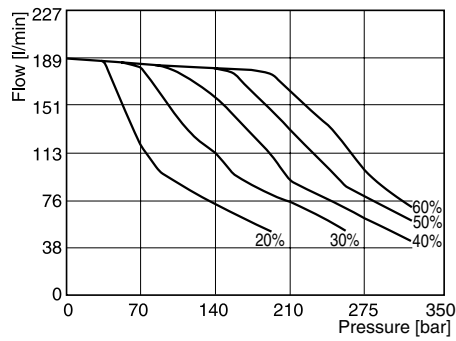


P2145 - 50...90 % Torque (1800 rpm)

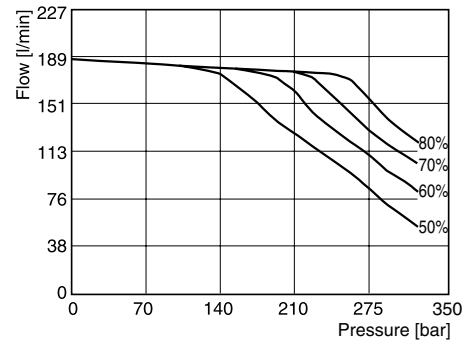


Fluid: Mineral oil ISO VG 32 at 40°C ; Inlet pressure: 1.0 bar (absolute) measured at inlet port.

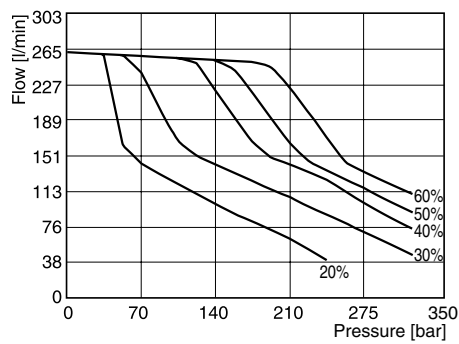
P3105 - 20...60 % Torque (1800 rpm)



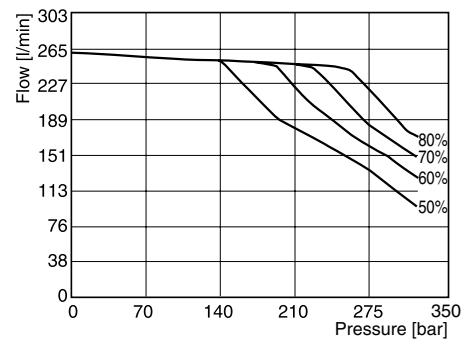
P3105 - 50...90 % Torque (1800 rpm)



P3145 - 20...60 % Torque (1800 rpm)



P3145 - 50...90 % Torque (1800 rpm)



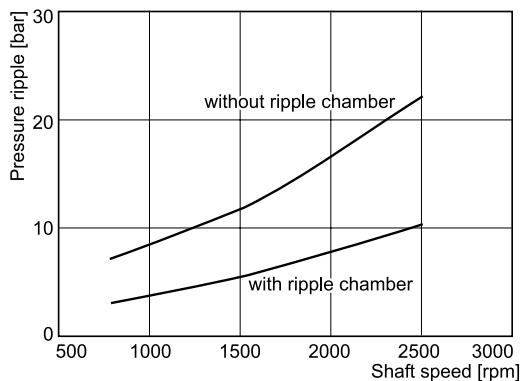
Fluid: Mineral oil ISO VG 32 at 40°C ; Inlet pressure: 1.0 bar (absolute) measured at inlet port.

Ripple chamber

Pressure ripple at 200 bar

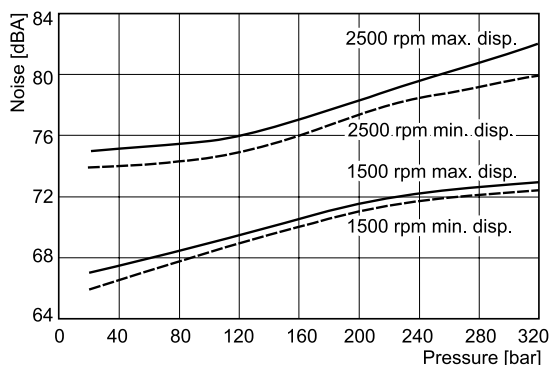
The chart on the right refers to the “Ripple Chamber” technology engineered into the P2 and P3 series pumps. The ripple chamber reduces flow pulsation and due to this pressure pulsation (called “ripple”) at the outlet of the pump. This technology reduces the ripple by 40–60%. This leads to a significant reduction in overall system noise without additional components or cost.

The ripple chamber is standard on all P2 and P3 series side ported pumps.

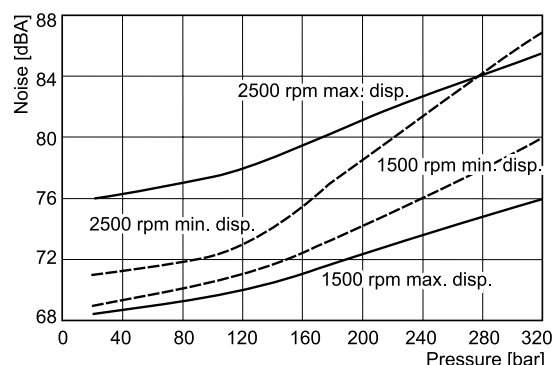


P2 Noise characteristics at max./min. displacement

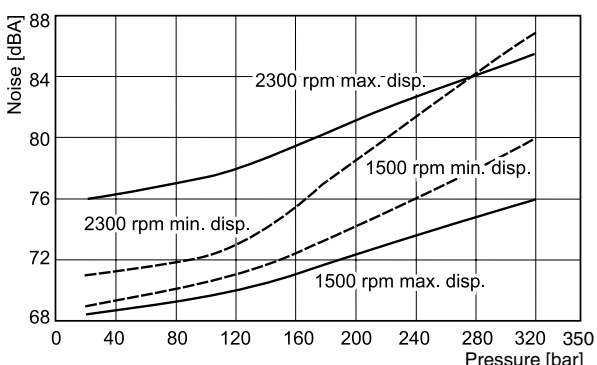
P2060 Noise characteristics



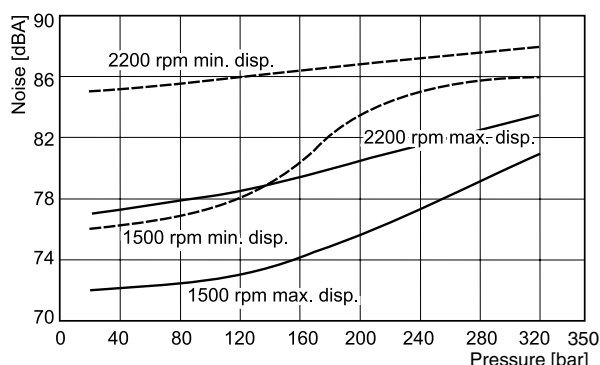
P2075 Noise characteristics



P2105 Noise characteristics

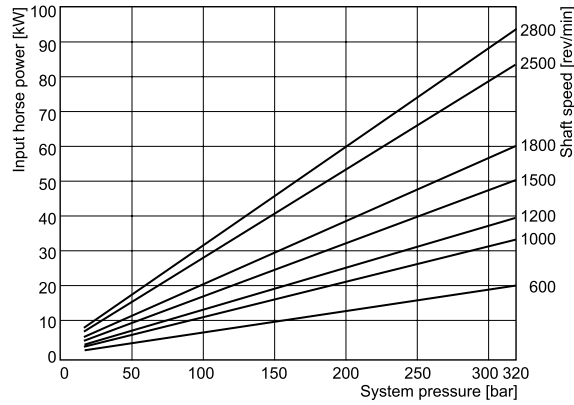


P2145 Noise characteristics

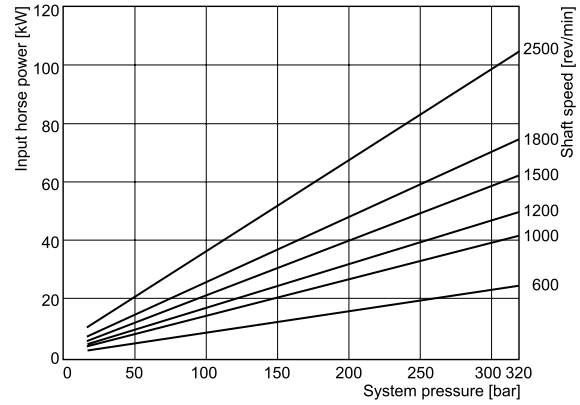


P2 Series - typical drive power at full displacement

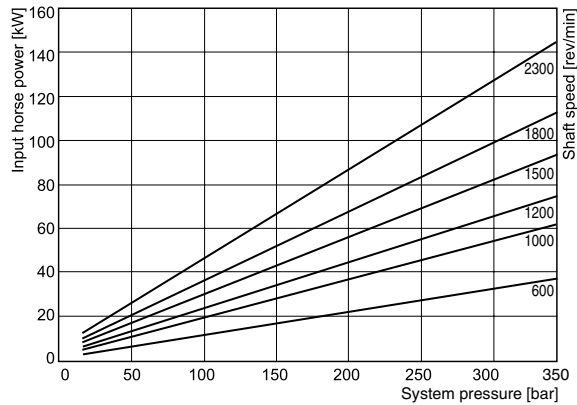
P2060 Input power - full stroke



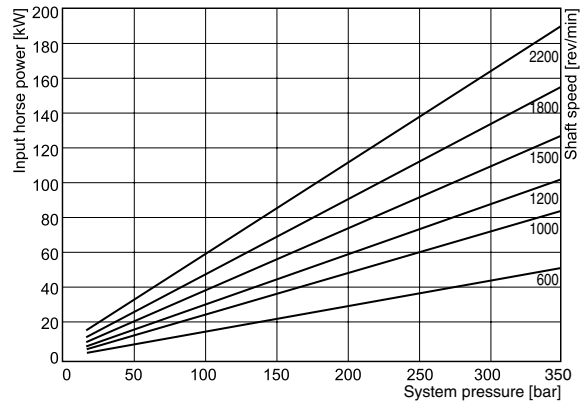
P2075 Input power - full stroke



P2105 Input power - full stroke



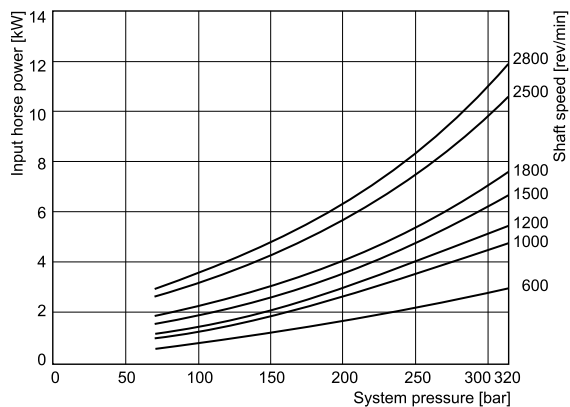
P2145 Input power - full stroke



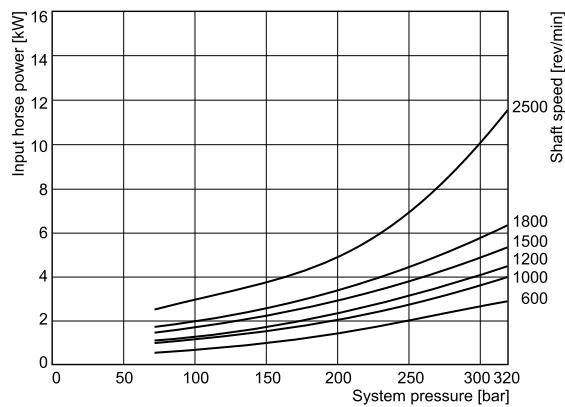
Fluid: Mineral oil ISO VG 32 at 40°C ; Inlet pressure: 1.0 bar (absolute) measured at inlet port.

P2 Series - typical compensated input power

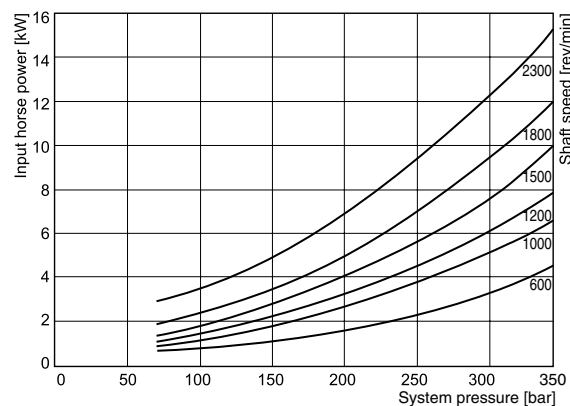
P2060 Input power - zero stroke



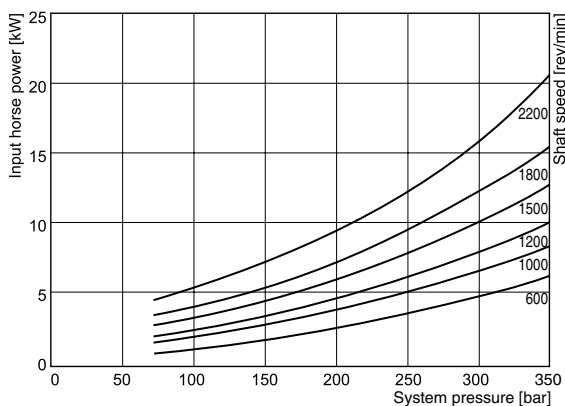
P2075 Input power - zero stroke



P2105 Input power - zero stroke



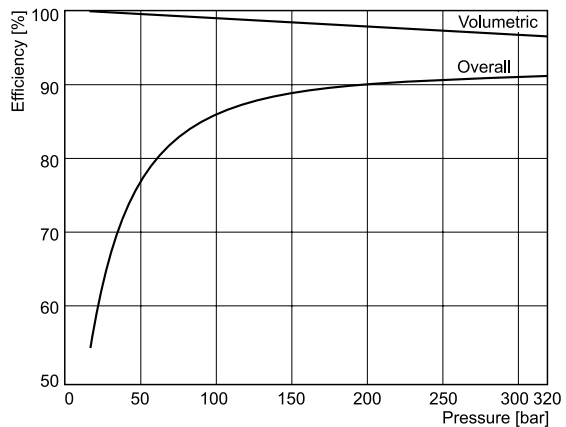
P2145 Input power - zero stroke



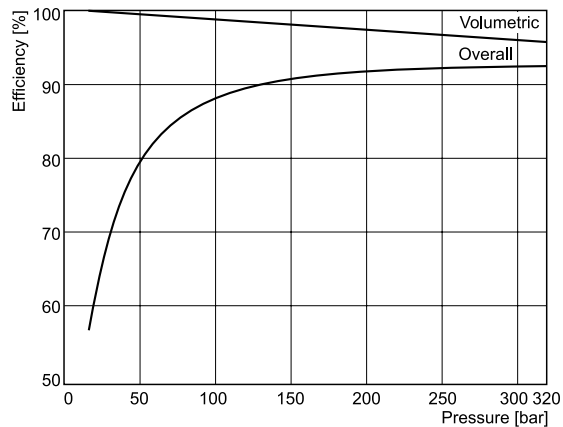
Fluid: Mineral oil ISO VG 32 at 40°C ; Inlet pressure: 1.0 bar (absolute) measured at inlet port.

P2 Series - typical efficiency at full displacement at 1800 rpm

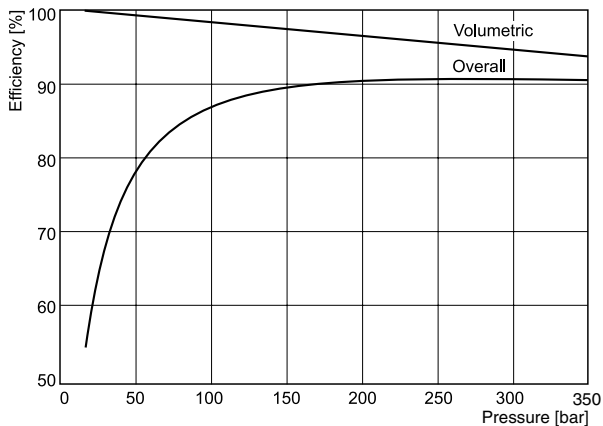
P2060 Efficiency at 1800 rpm



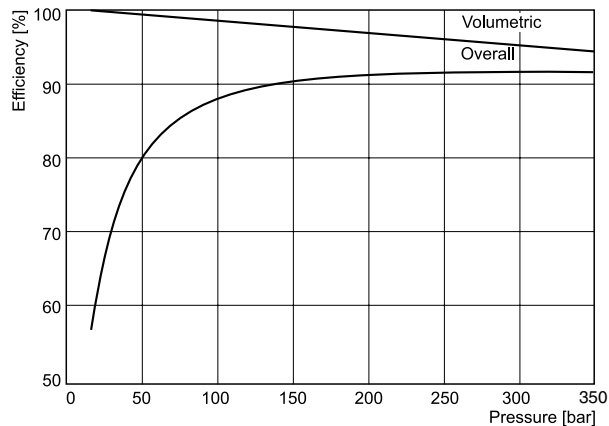
P2075 Efficiency at 1800 rpm



P2105 Efficiency at 1800 rpm



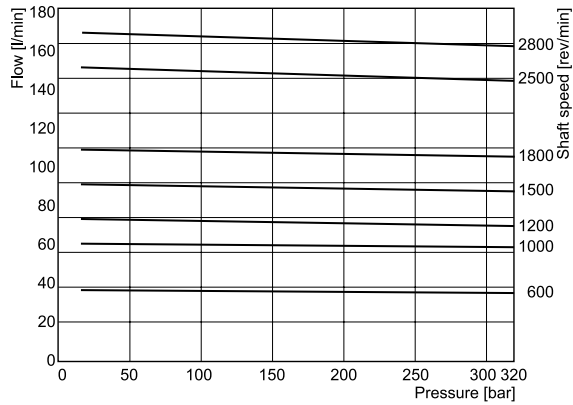
P2145 Efficiency at 1800 rpm



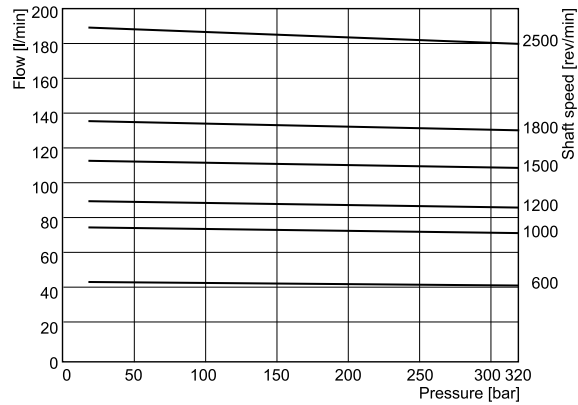
Fluid: Mineral oil ISO VG 32 at 40°C ; Inlet pressure: 1.0 bar (absolute) measured at inlet port.

P2 Series - typical flow vs. pressure

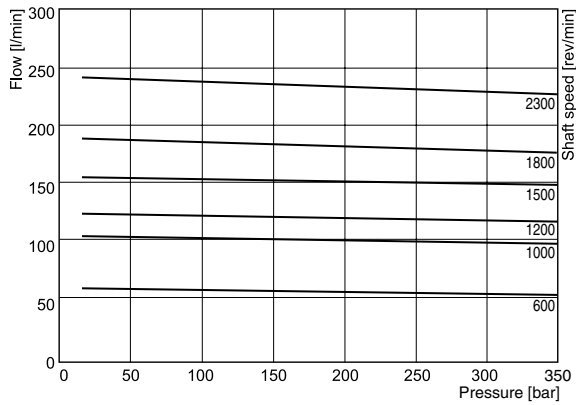
P2060 Outlet flow - full stroke



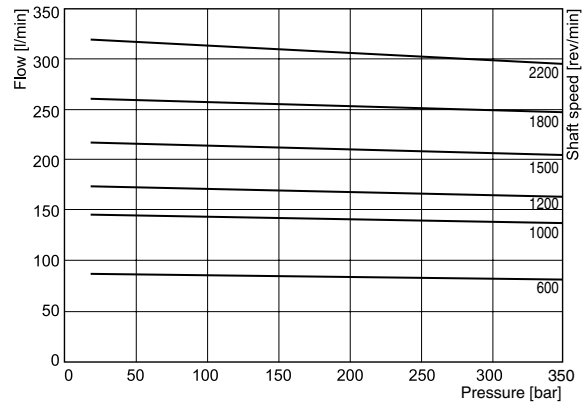
P2075 Outlet flow - full stroke



P2105 Outlet flow - full stroke



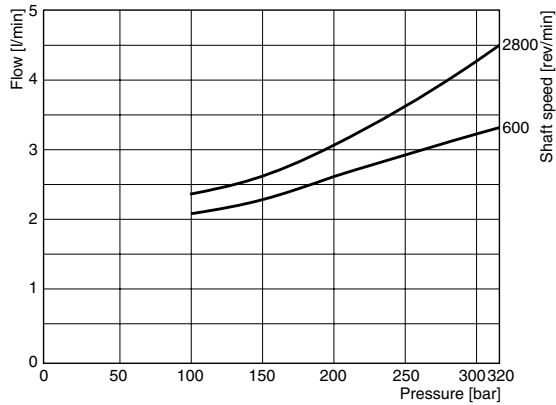
P2145 Outlet flow - full stroke



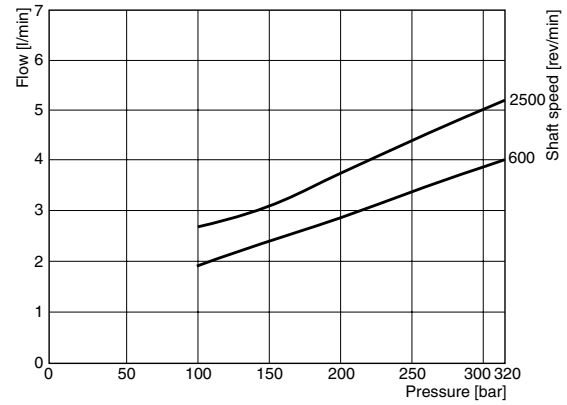
Fluid: Mineral oil ISO VG 32 at 40°C ; Inlet pressure: 1.0 bar (absolute) measured at inlet port.

P2 Series - typical compensated case drain flow

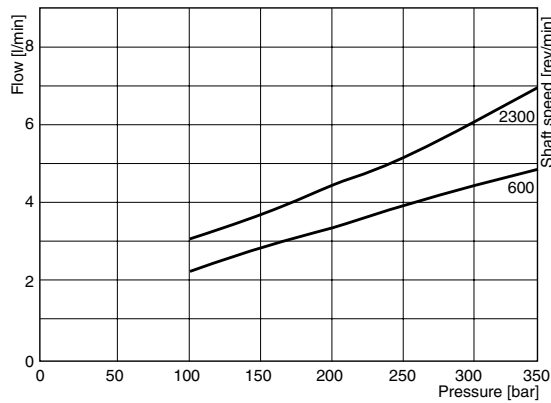
P2060 Drain flow at zero stroke



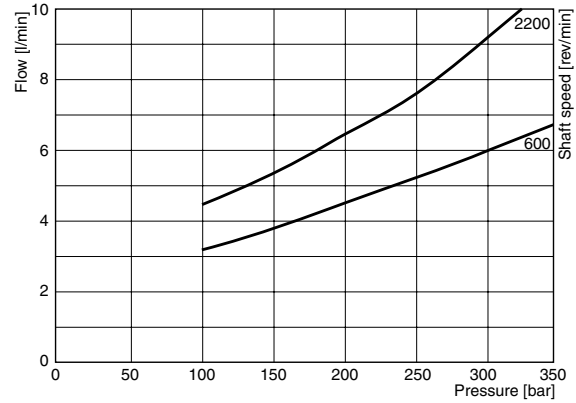
P2075 Drain flow at zero stroke



P2105 Drain flow at zero stroke



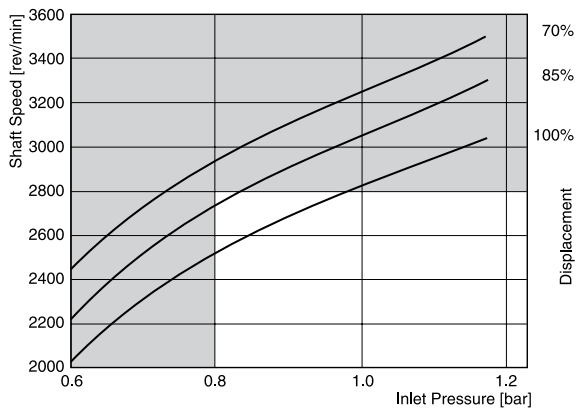
P2145 Drain flow at zero stroke



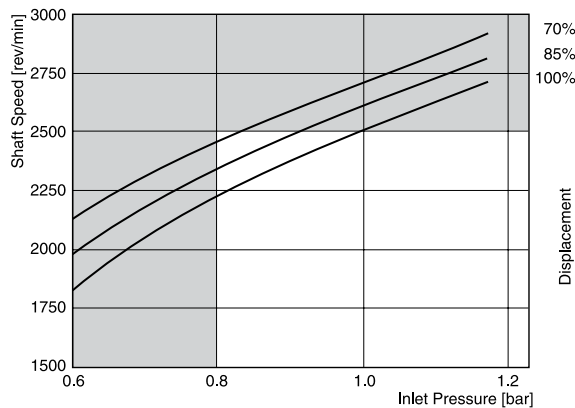
Fluid: Mineral oil ISO VG 32 at 40°C ; Inlet pressure: 1.0 bar (absolute) measured at inlet port.

P2 Series - typical inlet characteristics vs. speed at various percentage displacements

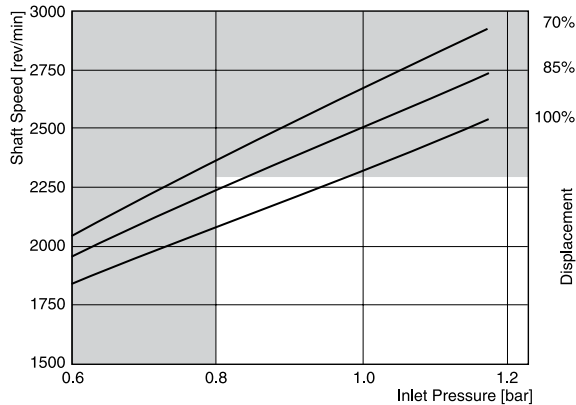
P2060 Inlet characteristics



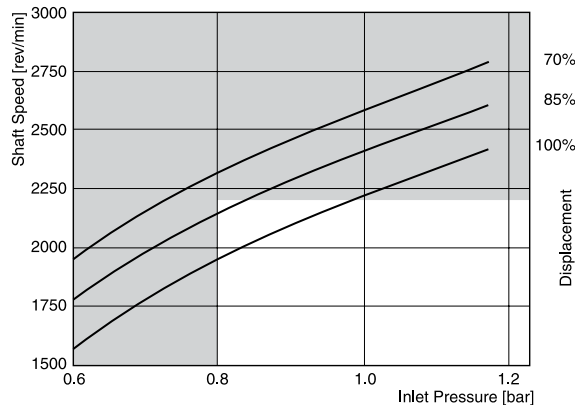
P2075 Inlet characteristics



P2105 Inlet characteristics



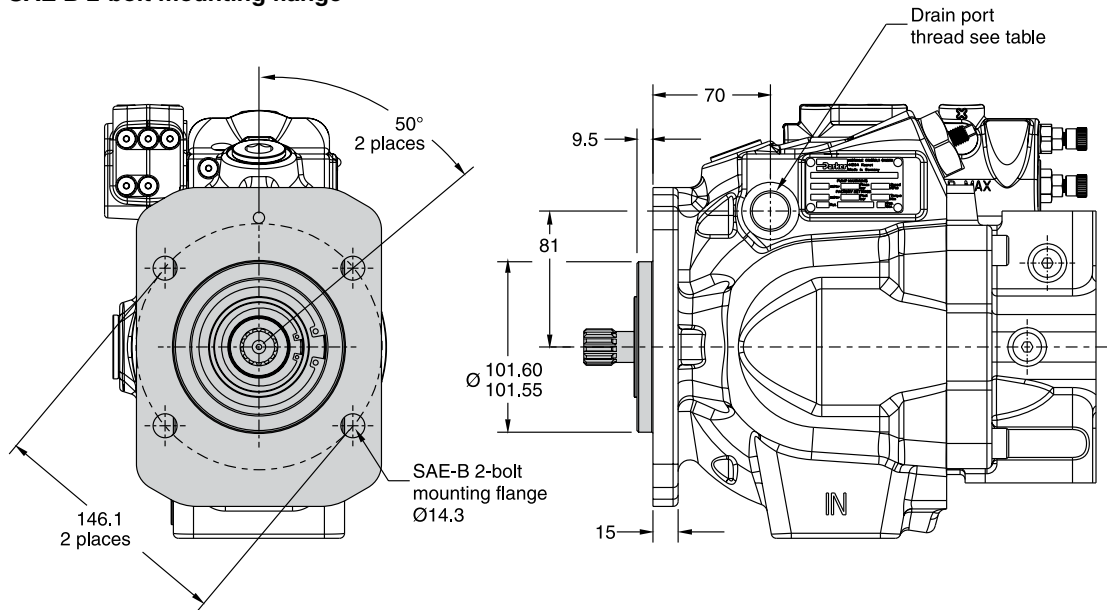
P2145 Inlet characteristics



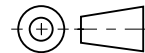
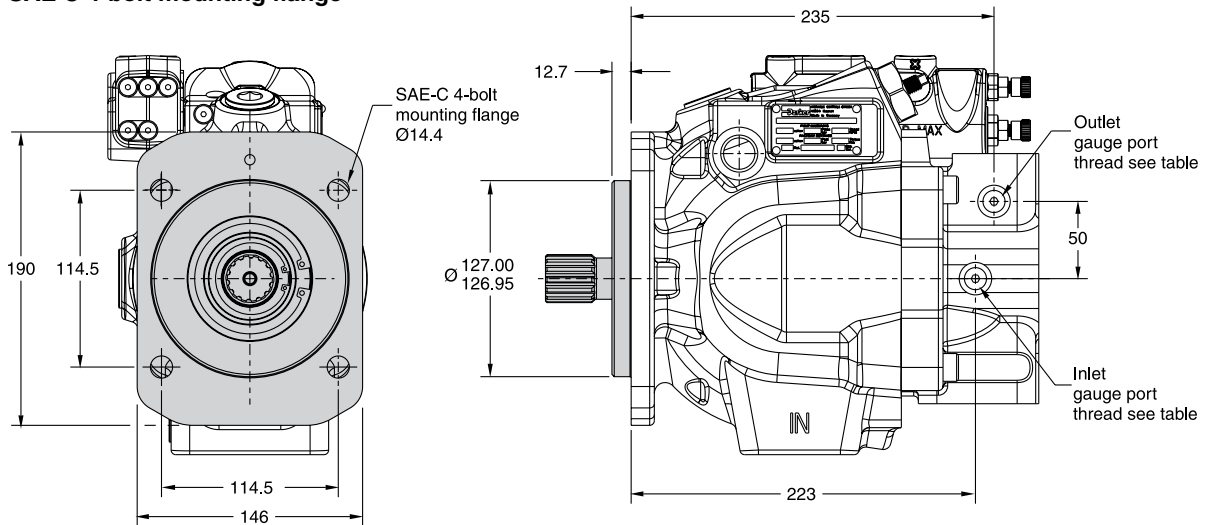
Fluid: Mineral oil ISO VG 32 at 40°C ; Inlet pressure: 1.0 bar (absolute) measured at inlet port.

For operation at these conditions, please consult manufacturer for approval.

**P2060 Mounting flange
 SAE B 2-bolt mounting flange**



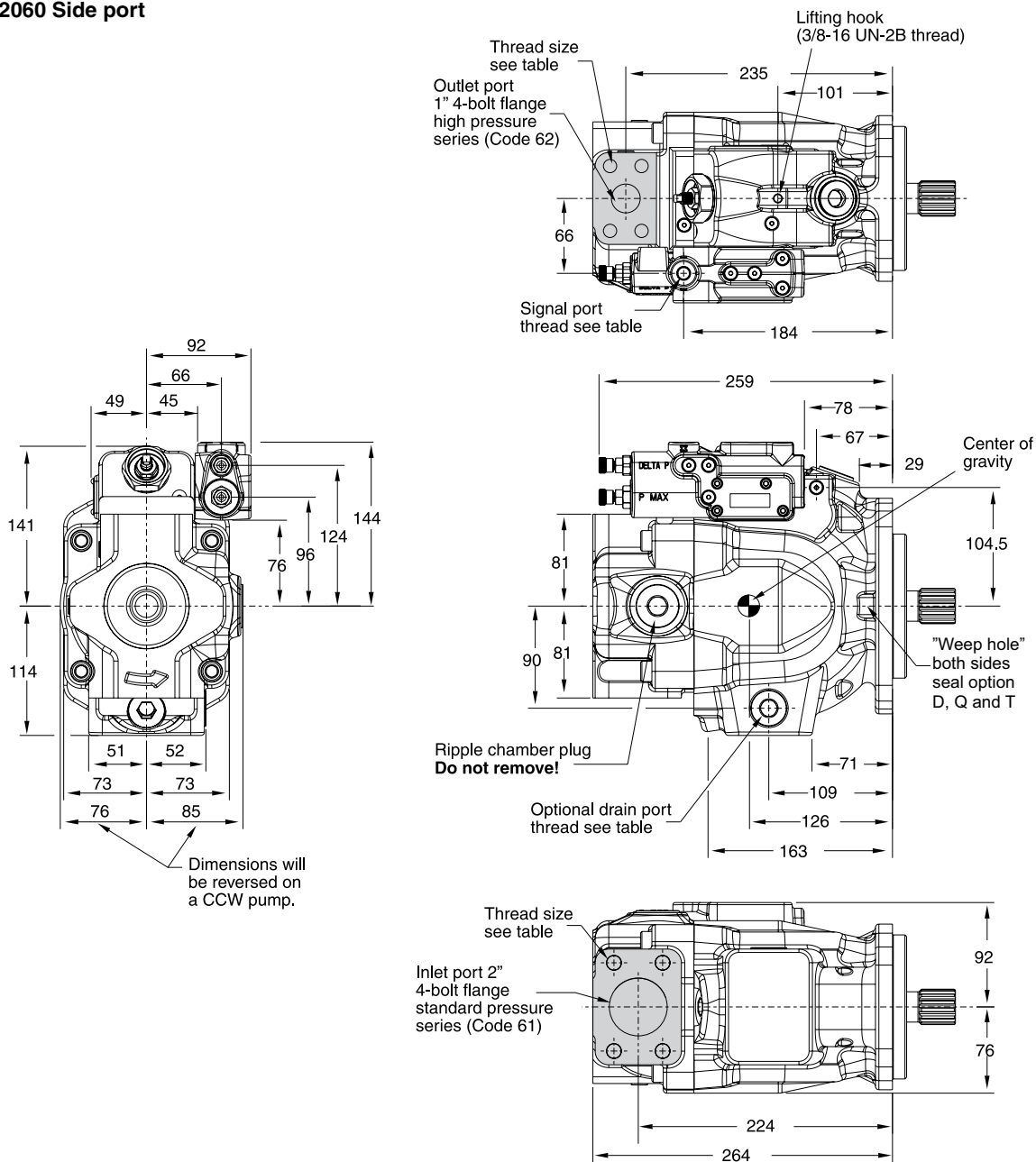
SAE C 4-bolt mounting flange



CW pump shown.
 CCW pump will have inlet and outlet gauge ports reversed.

Port ordering code	Drain port	Inlet gauge port / Outlet gauge port / Signal port
"A" side - UNC	SAE-10 straight thread / O-ring port: 7/8-14 UN thread	SAE-4 straight thread / O-ring port: 7/16-20 UN thread
"B" side - metric	ISO 6149 straight thread / O-ring port: M22 x 1.5 thread	ISO 6149 straight thread / O-ring port: M12 x 1.5 thread

P2060 Side port



Pump shown is a CW rotation P2060 series pump with load sense and max. pressure compensator.

As an option the compensator unit can be positioned at opposite side of the pump. Please consult manufacturer for details.

CCW pump will have inlet and outlet gauge ports reversed.

Port option	Drain port	Inlet port	Outlet port	Inlet gauge port / Outlet gauge port / Signal port
"A" side - UNC	SAE-10 straight thread / O-ring port: 7/8-14 UN thread	1/2-13 UN	7/16-14 UN	SAE-4 straight thread / O-ring port: 7/16-20 UN thread
"B" side - metric	ISO 6149 straight thread / O-ring port: M22 x 1.5 thread	M12 x 1.75	M12 x 1.75	ISO 6149 straight thread / O-ring port: M12 x 1.5 thread



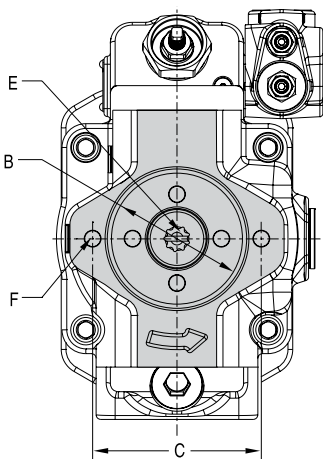
Dimensions

Axial Piston Pumps

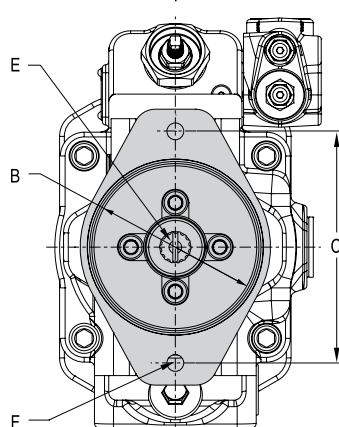
Series P2

P2060 Thru-drive option

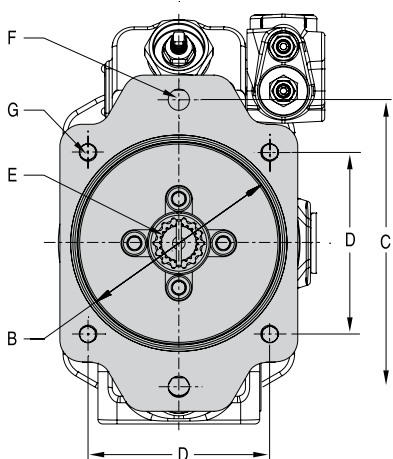
A1 configuration



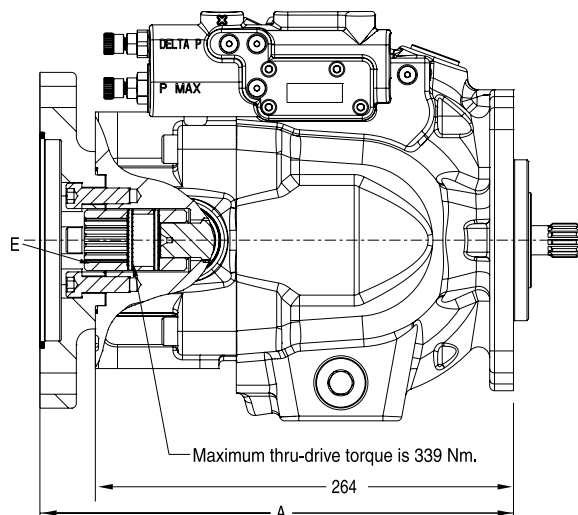
B1 and B2 configurations



C1 and C3 configurations



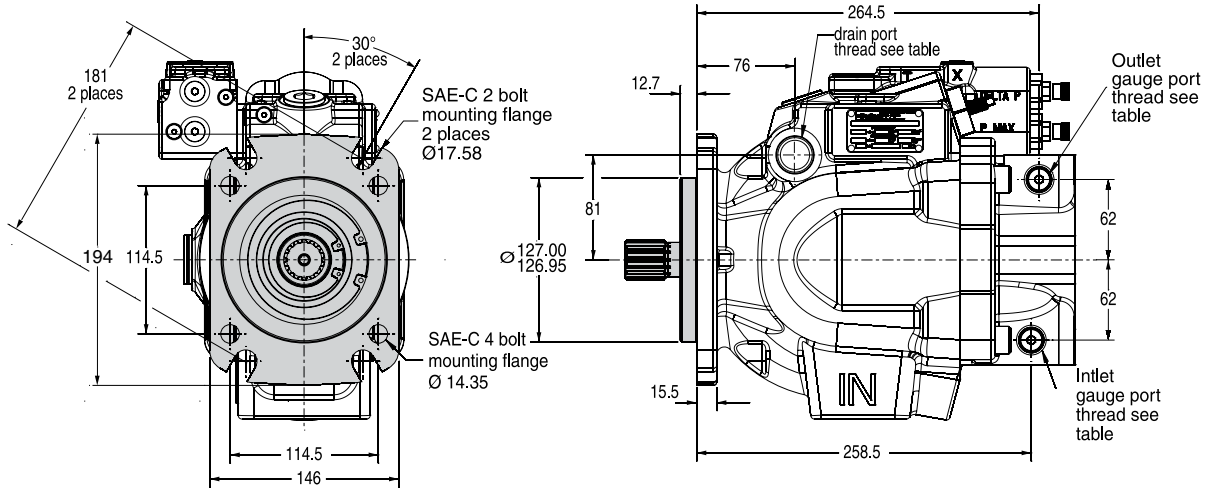
P2060 partial cut-away of thru-drive area



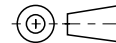
Thru-shaft option	A	B Ø	C	D	E	F UNC	F metric	G UNC	G metric	Weight
A1	264	82.625 82.575	106.38	N/A	SAE-A spline 9 tooth 16/32 pitch	3/8-16 UNC-2B THD	M10 x 1.5 THD	N/A	N/A	36.2 kg
B1	297	101.676 101.625	146.05	N/A	SAE-B spline 13 tooth 16/32 pitch	1/2-13 UNC-2B THD	M12 x 1.75 THD	N/A	N/A	38.9 kg
B2	297	101.676 101.625	146.05	N/A	SAE-BB spline 15 tooth 16/32 pitch	1/2-13 UNC-2B THD	M12 x 1.75 THD	N/A	N/A	38.9 kg
C1 C3	299	127.076 127.025	180.98	114.5	SAE-C spline 14 tooth 12/24 pitch	5/8-11 UNC-2B THD	M16 x 2 THD	1/2-13 UNC-2B THD	M12 x 1.75 THD	40.2 kg



P2075 Mounting flange



CW pump shown.
 CCW pump will have inlet and outlet gauge ports reversed.



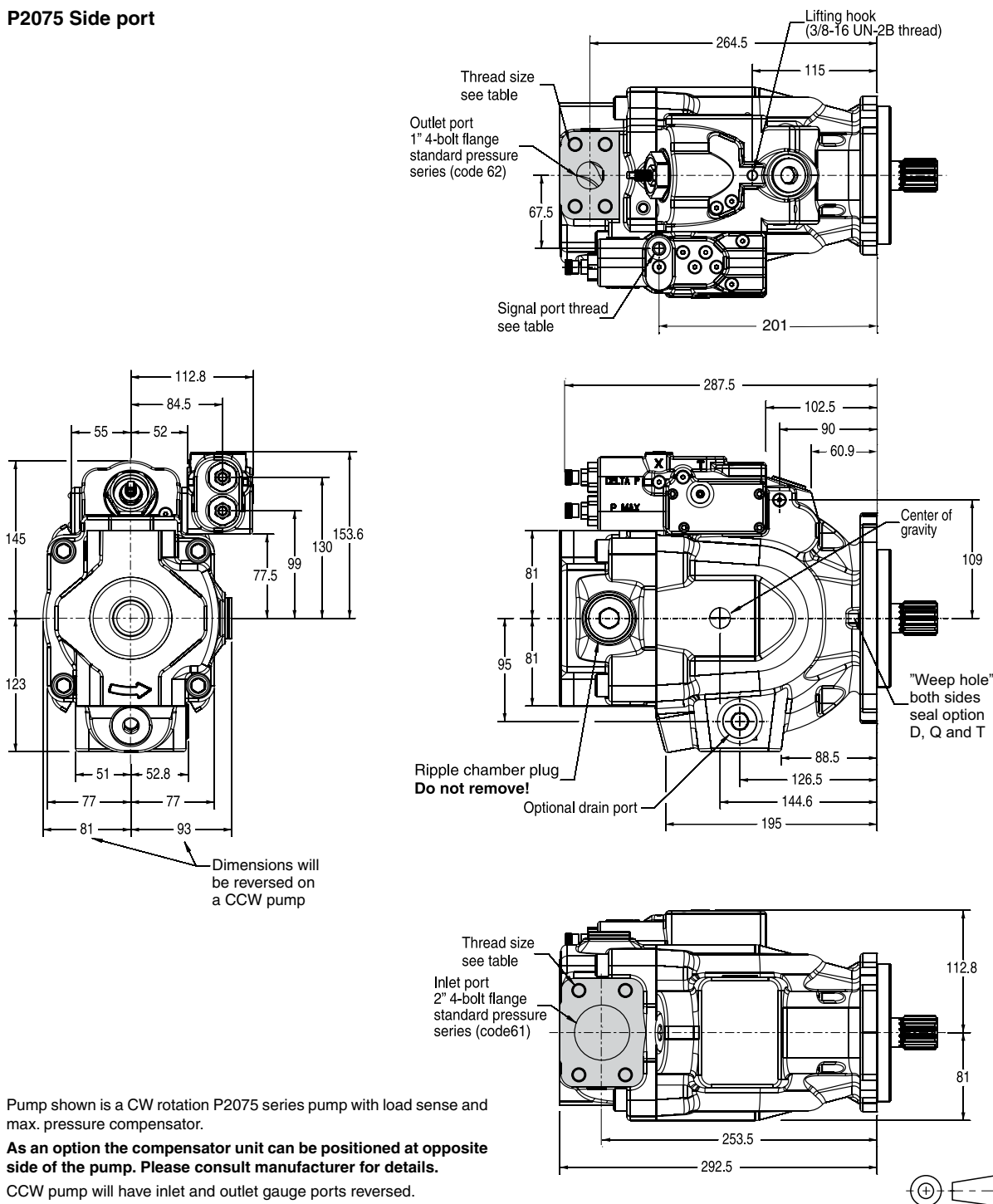
Port ordering code	Drain port	Inlet gauge port / Outlet gauge port
"A" side - UNC	SAE-12 straight thread / O-ring port: 1-1/16-12 UN thread	SAE-4 straight thread / O-ring port: 7/16-20 UN thread
"B" side - metric	ISO 6149 straight thread / O-ring port: M27 x 2 thread	ISO 6149 straight thread / O-ring port: M12 x 1.5 thread

Dimensions

Axial Piston Pumps

Series P2

P2075 Side port



Pump shown is a CW rotation P2075 series pump with load sense and max. pressure compensator.

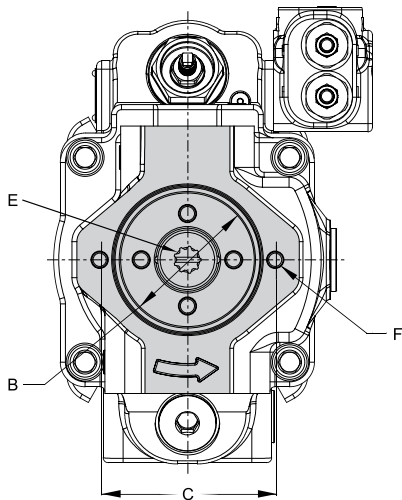
As an option the compensator unit can be positioned at opposite side of the pump. Please consult manufacturer for details.

CCW pump will have inlet and outlet gauge ports reversed.

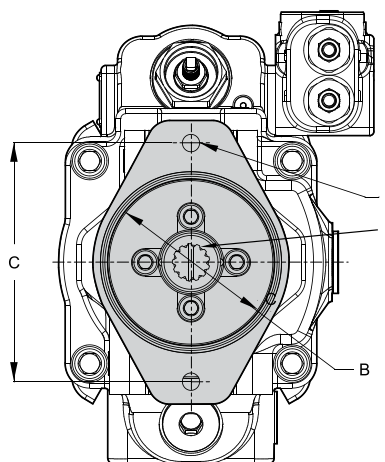
Port option	Drain port	Inlet port	Outlet port	Inlet gauge port / Outlet gauge port / Signal port
"A" side - UNC	SAE-12 straight thread / O-ring port: 1-1/16-12 thread	1/2-13 UN	7/16-14 UN	SAE-4 straight thread / O-ring port: 7/16-20 UN thread
"B" side - metric	ISO 6149 straight thread / O-ring port: M27 x 2 thread	M12 x 1.75	M12 x 1.75	ISO 6149 straight thread / O-ring port: M12 x 1.5 thread

P2075 Thru-drive option

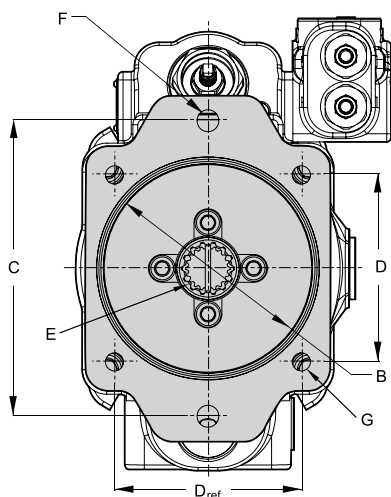
A1 configuration



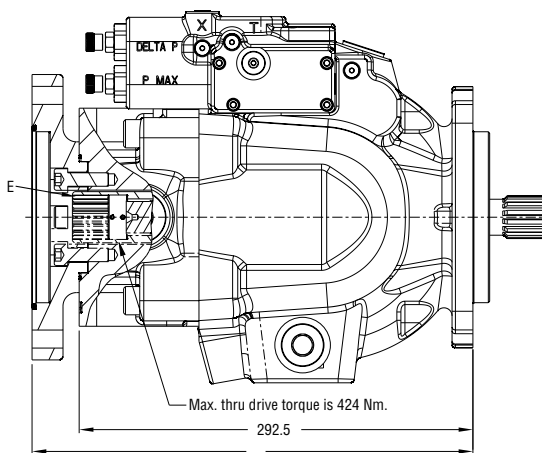
B1 and B2 configurations



C1 and C3 configurations



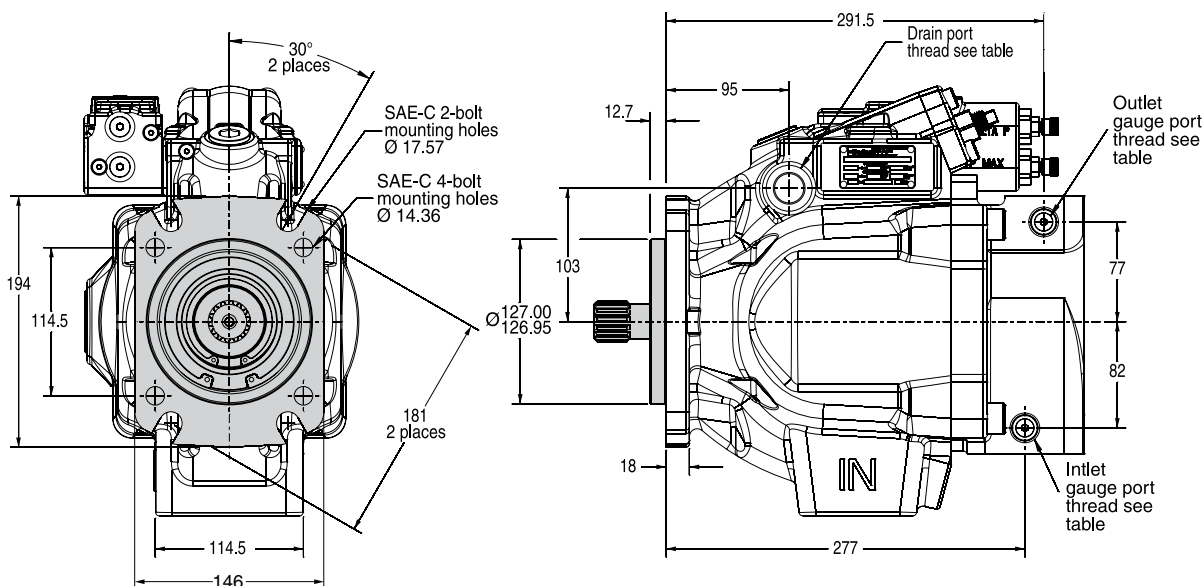
P2075 partial cut-away of thru-drive area



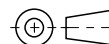
Pumps will be assembled with flange adapters as shown. Options B1, B2, C1 and C3 can be rotated 90°.

Thru-shaft option	A	B Ø	C	D	E	F UNC	F metric	G UNC	G metric	Weight
A1	292.5	82.625 82.575	106.38	N/A	SAE-A spline 9 tooth 16/32 pitch	3/8-16 UNC-2B THD	M10 x 1.5 THD	N/A	N/A	44 kg
B1	325.5	101.676 101.625	146.05	N/A	SAE-B spline 13 tooth 16/32 pitch	1/2-13 UNC-2B THD	M12 x 1.75 THD	N/A	N/A	46.5 kg
B2	325.5	101.676 101.625	146.05	N/A	SAE-BB spline 15 tooth 16/32 pitch	1/2-13 UNC-2B THD	M12 x 1.75 THD	N/A	N/A	46.5 kg
C1 C3	327.5	127.076 127.025	180.98	114.5	SAE-C spline 14 tooth 12/24 pitch	5/8-11 UNC-2B THD	M16 x 2 THD	1/2-13 UNC-2B THD	M12 x 1.75 THD	48 kg

P2105 Mounting flange

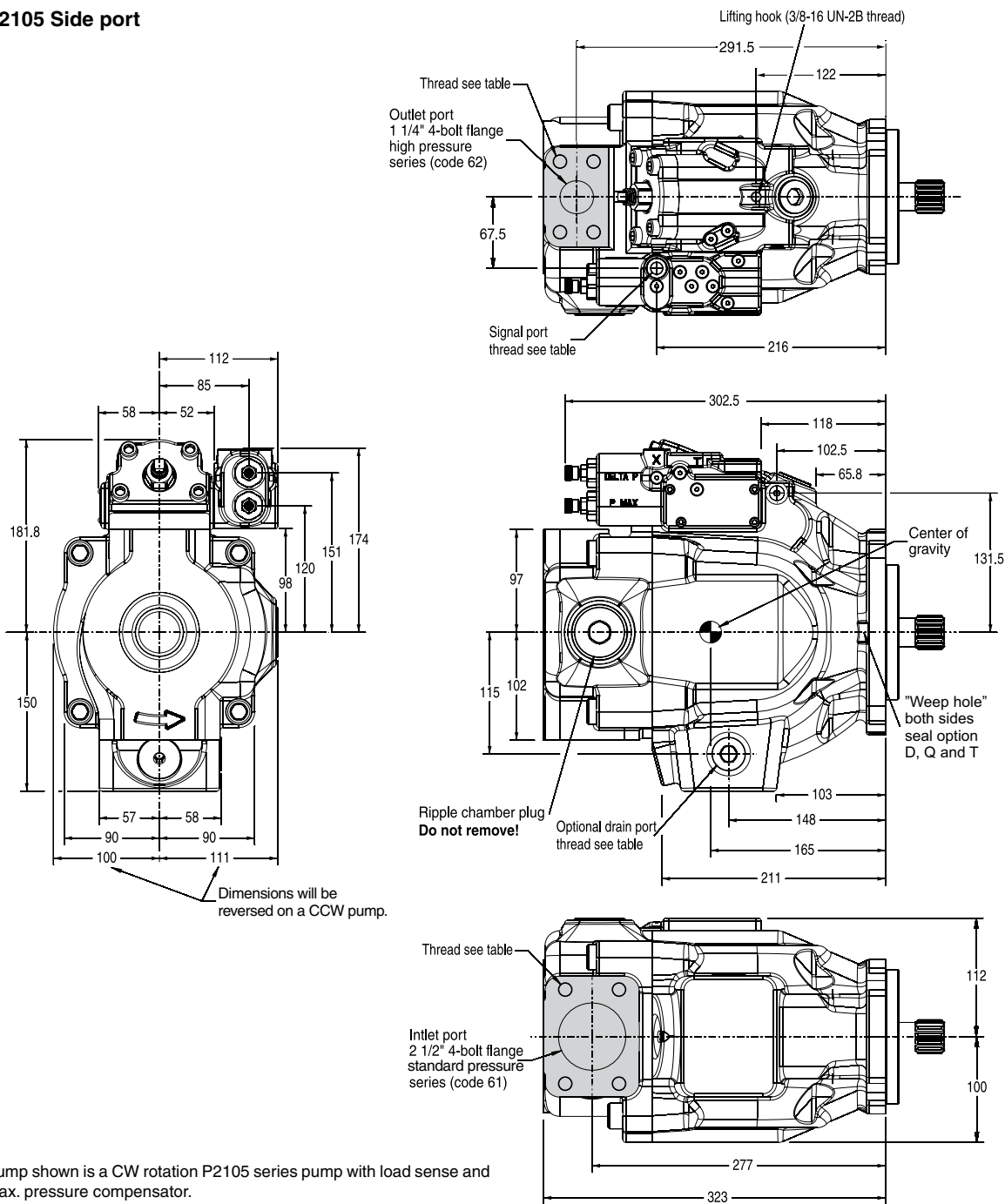


CW pump shown.
 CCW pump will have inlet and outlet gauge ports reversed.



Port ordering code	Drain port	Inlet gauge port / Outlet gauge port
"A" side - UNC	SAE-12 straight thread / O-ring port: 1-1/16-12 UN thread	SAE-4 straight thread / O-ring port: 7/16-20 UN thread
"B" side - metric	ISO 6149 straight thread / O-ring port: M27 x 2 thread	ISO 6149 straight thread / O-ring port: M12 x 1.5 thread

P2105 Side port



Pump shown is a CW rotation P2105 series pump with load sense and max. pressure compensator.

As an option the compensator unit can be positioned at opposite side of the pump. Please consult manufacturer for details.

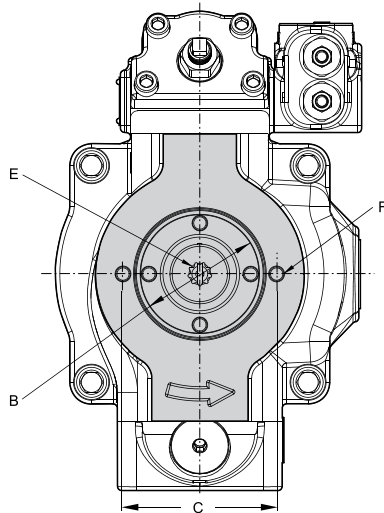
CCW pump will have inlet and outlet gauge ports reversed.

Port option	Drain port	Inlet port	Outlet port	Inlet gauge port / Outlet gauge port / Signal port
"A" side - UNC	SAE-12 straight thread / O-ring port: 1-1/16-12 thread	1/2-13 UN	1/2-13 UN	SAE-4 straight thread / O-ring port: 7/16-20 UN thread
"B" side - metric	ISO 6149 straight thread / O-ring port: M27 x 2 thread	M12 x 1.75	M12 x 1.75	ISO 6149 straight thread / O-ring port: M12 x 1.5 thread

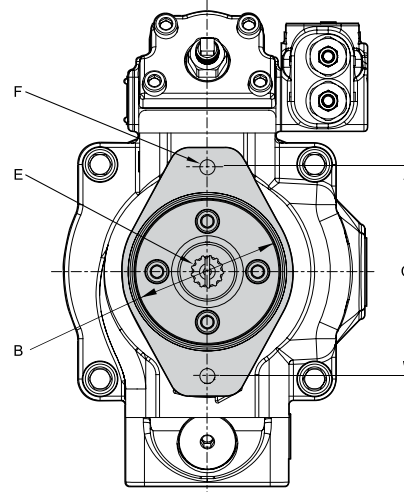


P2105 Thru-drive option

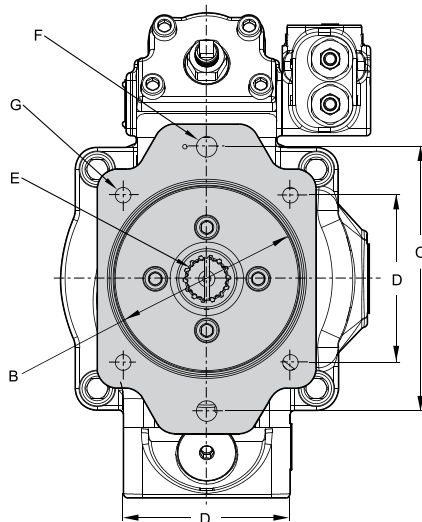
A1 configuration



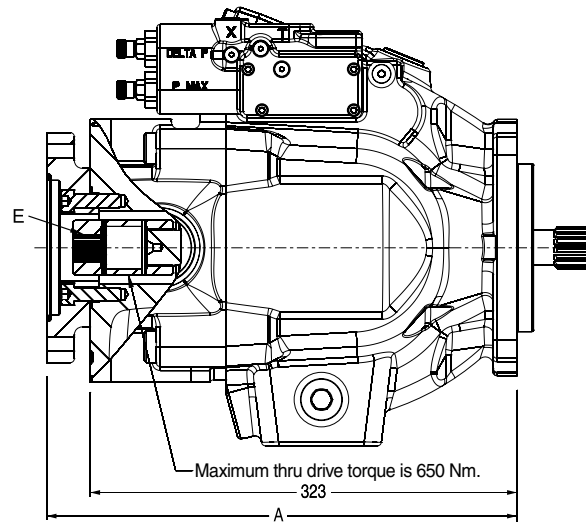
B1 and B2 configurations



C1 and C3 configurations



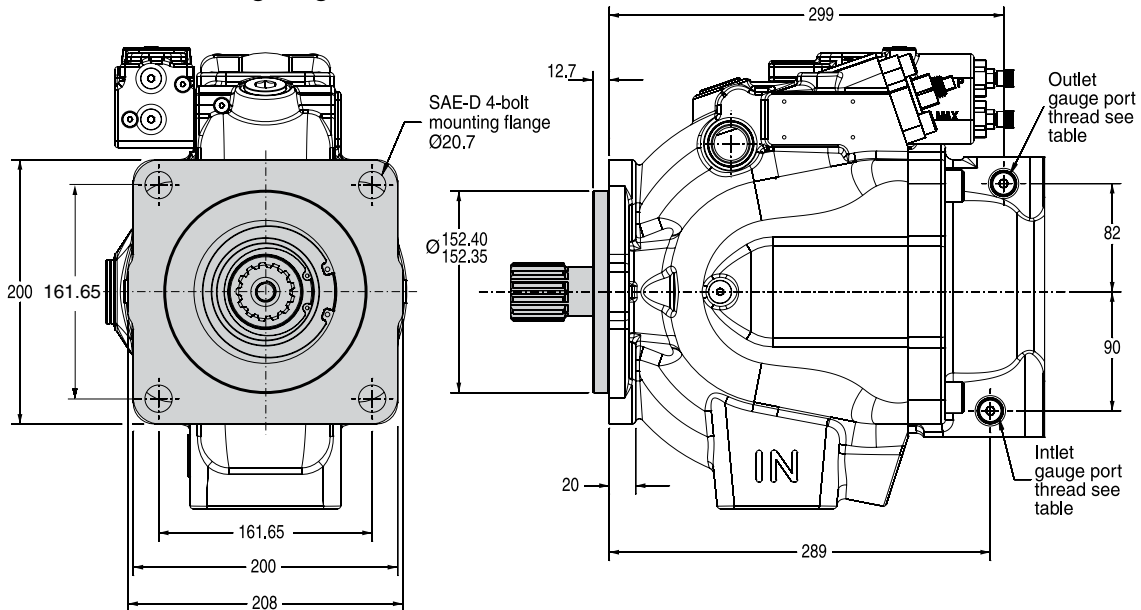
P2105 partial cut-away of thru-drive area



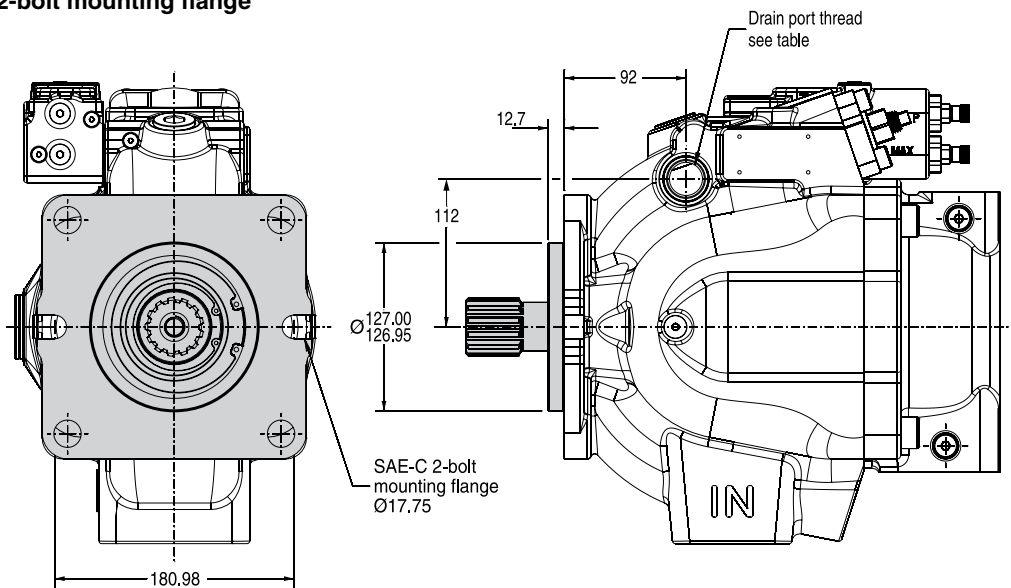
Pumps will be assembled with flange adapters as shown. Options B1, B2, C1 and C3 can be rotated 90°.

Thru-shaft option	A	B Ø	C	D	E	F UNC	F metric	G UNC	G metric	Weight
A1	323	82.625 82.575	106.38	N/A	SAE-A spline 9 tooth 16/32 pitch	3/8-16 UNC-2B THD	M10 x 1.5 THD	N/A	N/A	61 kg
B1	356	101.676 101.625	146.05	N/A	SAE-B spline 13 tooth 16/32 pitch	1/2-13 UNC-2B THD	M12 x 1.75 THD	N/A	N/A	64 kg
B2	356	101.676 101.625	146.05	N/A	SAE-BB spline 15 tooth 16/32 pitch	1/2-13 UNC-2B THD	M12 x 1.75 THD	N/A	N/A	64 kg
C1, C3	358	127.075 127.025	180.98	114.5	SAE-C spline 14 tooth 12/24 pitch	5/8-11 UNC-2B THD	M16 x 2 THD	1/2-13 UNC-2B THD	M12 x 1.75 THD	65 kg

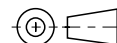
**P2145 Mounting flange
 SAE D 4-bolt mounting flange**



SAE C 2-bolt mounting flange

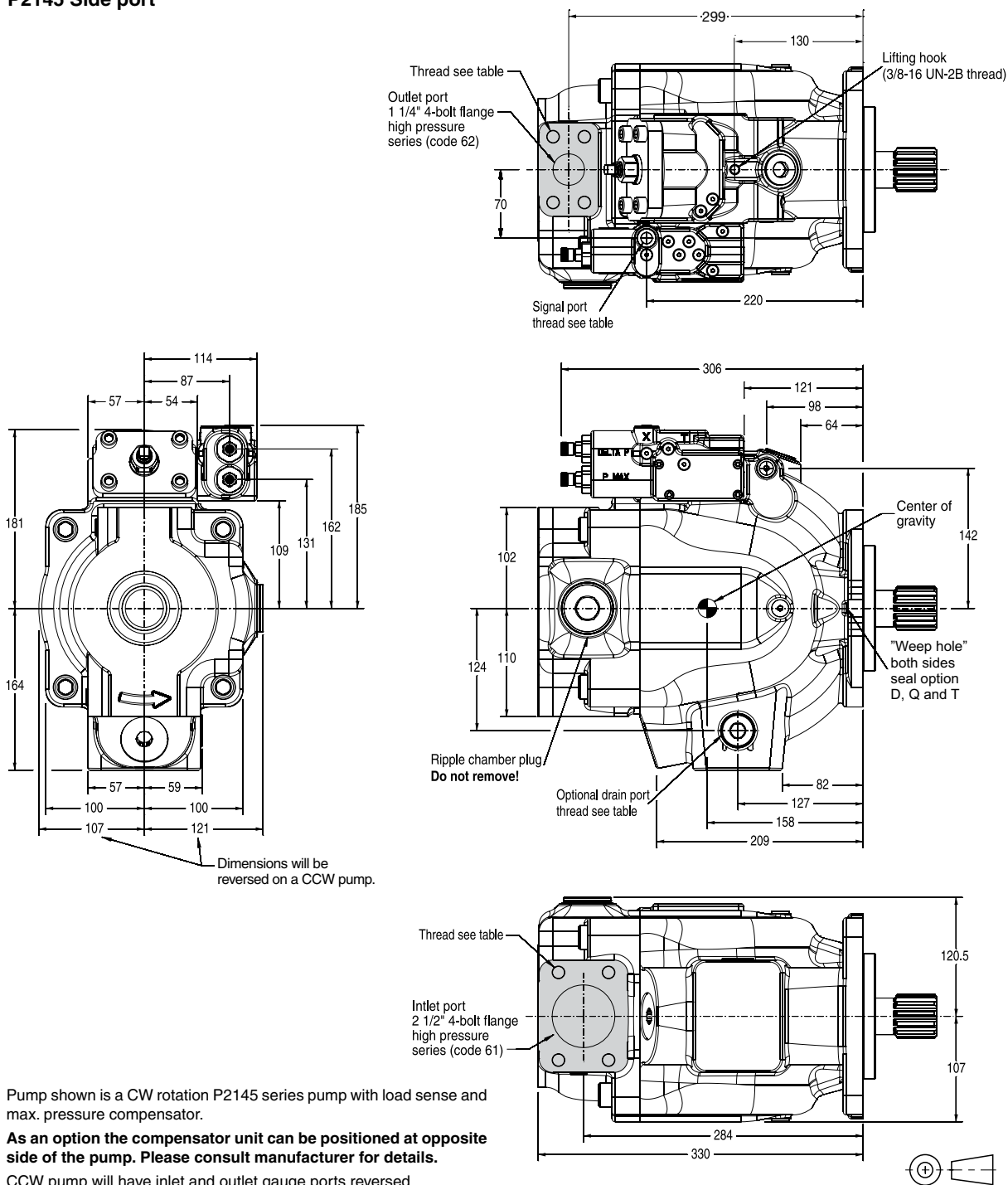


CW pump shown.
 CCW pump will have inlet and outlet gauge ports reversed.



Port ordering code	Drain port	Inlet gauge port / Outlet gauge port
"A" side - UNC	SAE-12 straight thread / O-ring port: 1-1/16-12 UN thread	SAE-4 straight thread / O-ring port: 7/16-20 UN thread
"B" side - metric	ISO 6149 straight thread / O-ring port: M27 x 2 thread	ISO 6149 straight thread / O-ring port: M12 x 1.5 thread

P2145 Side port



Pump shown is a CW rotation P2145 series pump with load sense and max. pressure compensator.

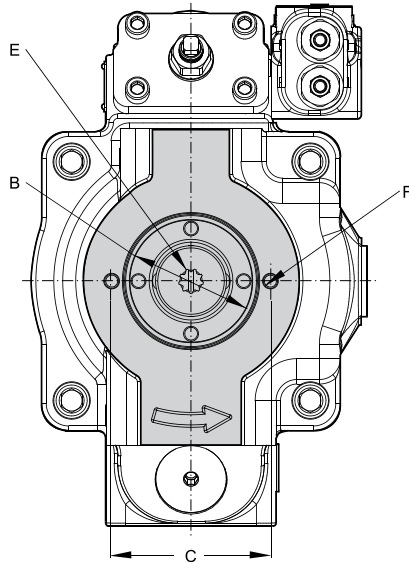
As an option the compensator unit can be positioned at opposite side of the pump. Please consult manufacturer for details.

CCW pump will have inlet and outlet gauge ports reversed.

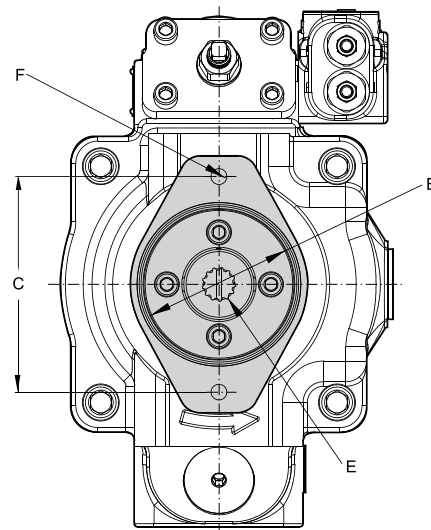
Port option	Drain port	Inlet port	Outlet port	Inlet gauge port / Outlet gauge port / Signal port
"A" side - UNC	SAE-12 straight thread / O-ring port: 1-1/16-12 thread	1/2-13 UN	1/2-13 UN	SAE-4 straight thread / O-ring port: 7/16-20 UN thread
"B" side - metric	ISO 6149 straight thread / O-ring port: M27 x 2 thread	M12 x 1.75	M12 x 1.75	ISO 6149 straight thread / O-ring port: M12 x 1.5 thread



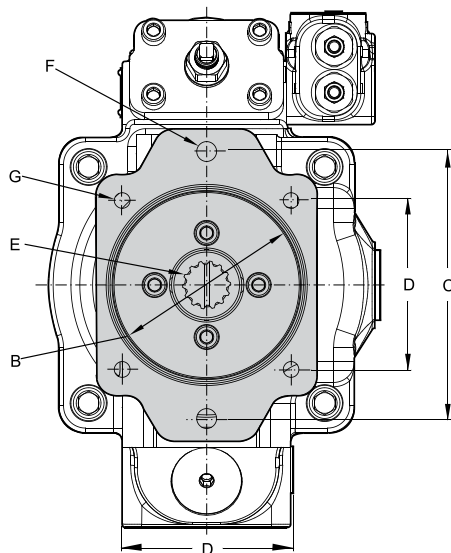
**P2145 Thru-drive option
 A1 configuration**



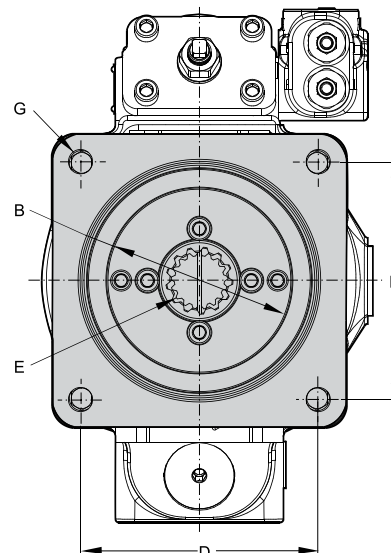
B1 and B2 configurations



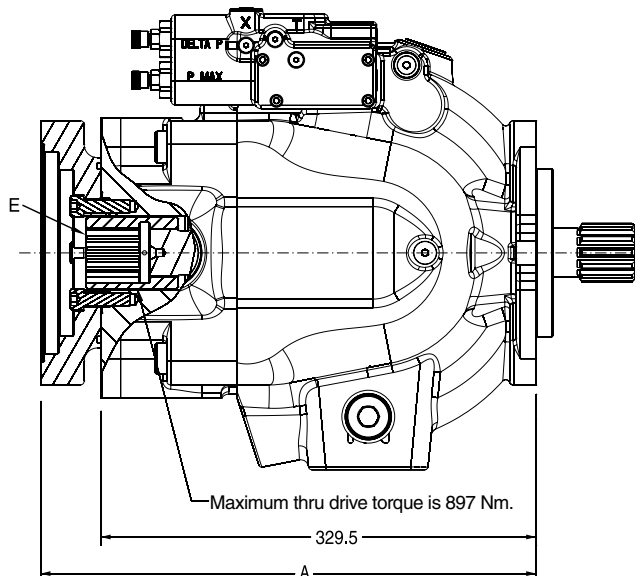
C1, C2, C3 and C4 configurations



D3 configuration



P2145 Thru-drive option

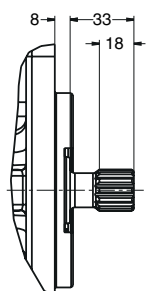


Thru-shaft option	A	B Ø	C	D	E	F UNC	F metric	G UNC	G metric	Weight
A1	329.5	82.626 82.575	106.38	N/A	SAE-A spline 9 tooth 16/32 pitch	3/8-16 UNC-2B THD	M10 x 1.5 THD	N/A	N/A	79.8 kg
B1	362.5	101.676 101.625	146.05	N/A	SAE-B spline 13 tooth 16/32 pitch	1/2-13 UNC-2B THD	M12 x 1.75 THD	N/A	N/A	82.6 kg
B2	362.5	101.676 101.625	146.05	N/A	SAE-BB spline 15 tooth 16/32 pitch	1/2-13 UNC-2B THD	M12 x 1.75 THD	N/A	N/A	82.6 kg
C1 & C2	364.5	127.075 127.025	180.98	NA	SAE-C spline 14 tooth 2/24 pitch	5/8-11 UNC-2B THD	M16 x 2 THD	1/2-13 UNC-2B THD	M12 x 1.75 THD	83.9 kg
C3	364.5	127.075 127.025	180.98	114.5	SAE-C spline 14 tooth 2/24 pitch	5/8-11 UNC-2B THD	M16 x 2 THD	1/2-13 UNC-2B THD	M12 x 1.75 THD	83.9 kg
C4	364.5	127.075 127.025	180.98	114.5	SAE-CC spline 17 tooth 2/24 pitch	5/8-11 UNC-2B THD	M16 x 2 THD	1/2-13 UNC-2B THD	M12 x 1.75 THD	83.9 kg
D3	375	152.475 152.425	NA	161.65	SAE-D spline 13 tooth 8/16 pitch	NA	NA	3/4-10 UNC-2B THD	M16 x 2 THD	88 kg

Dimensions

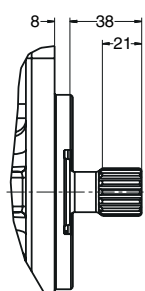
P2 Shaft options

B1



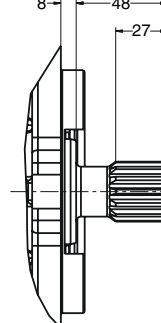
SAE "B" spline
13 tooth
16/32 pitch
30° involute spline
Max. input torque
209 Nm

B2



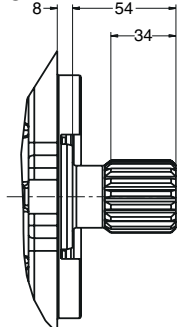
SAE "B-B" spline
15 tooth
16/32 pitch
30° involute spline
Max. input torque
337 Nm

C1



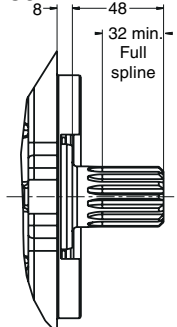
SAE "C" spline
14 tooth
12/24 pitch
30° involute spline
Max. input torque
641 Nm

C2



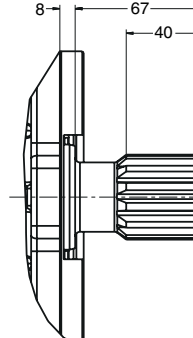
SAE "C-C" spline
17 tooth
12/24 pitch
30° involute spline
Max. input torque
1217 Nm

C3



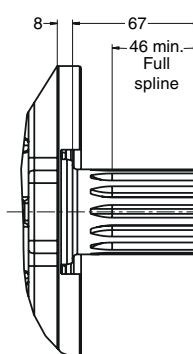
SAE "C" spline
no undercut
14 tooth
12/24 pitch
30° involute spline
Max. input torque
769 Nm

D1



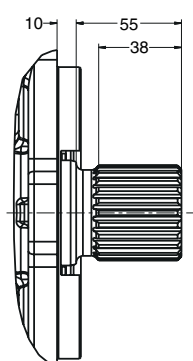
SAE D
13 tooth
8/16 pitch
30° involute spline
Max. input torque
1701 Nm

D2



SAE "D" spline
no undercut
13 tooth
8/16 pitch
30° involute spline
Max. input torque
2041 Nm

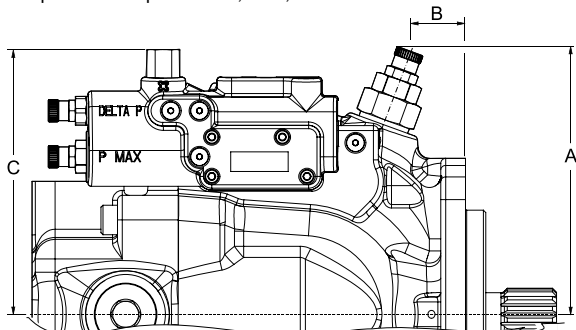
M6



DIN 5480 spline
W50x2x30x24x9g
Max. input torque
3050 Nm

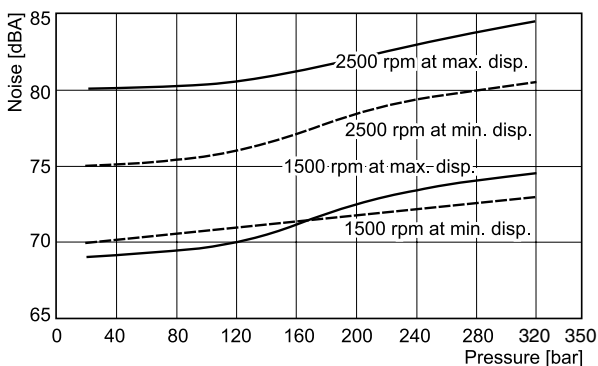
Torque control dimensions

Torque control options "TA", "TB", "TC" and "TD"

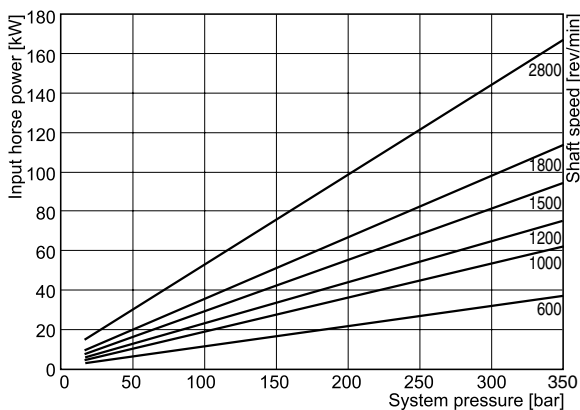


	P2060	P2075	P2105	P2145
A	163	171	190	202
B	34	69	69	69
C	161	154	175	186

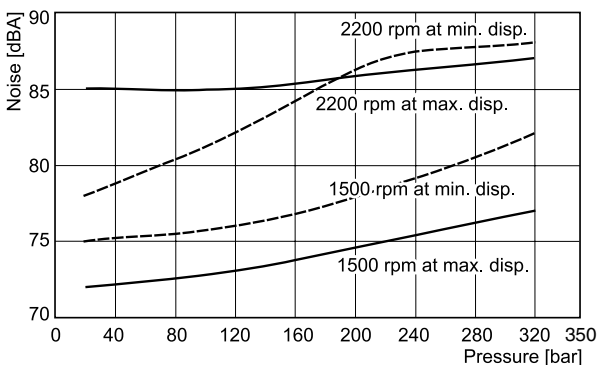
**P3 Noise characteristics at max./min. displacement
 P3105 Noise characteristics**



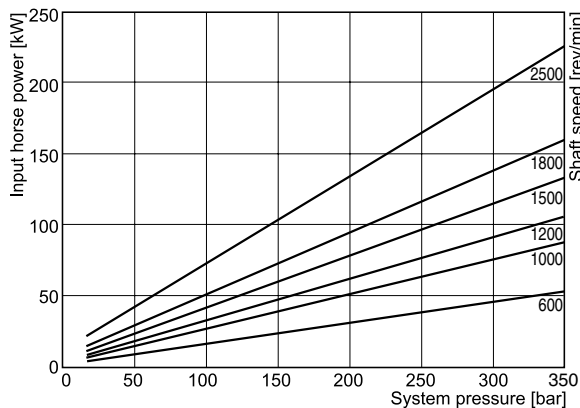
**P3 Series - typical drive power at full displacement
 P3105 Input power - full stroke**



P3145 Noise characteristics

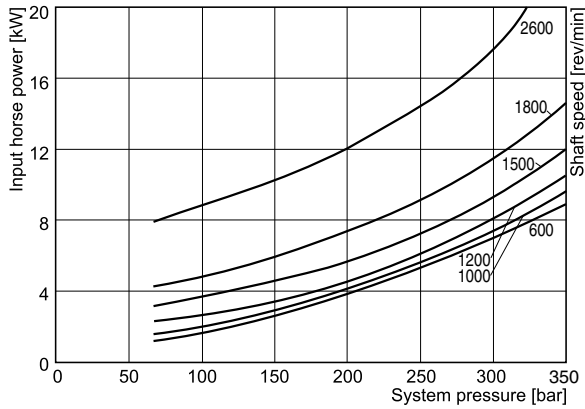


P3145 Input power - full stroke

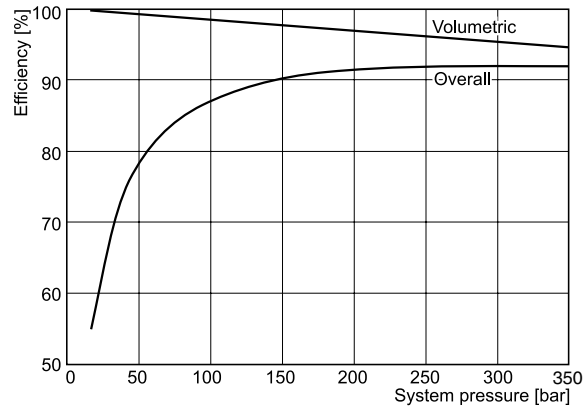


Fluid: Mineral oil ISO VG 32 at 40°C ; Inlet pressure: 1.0 bar (absolute) measured at inlet port.

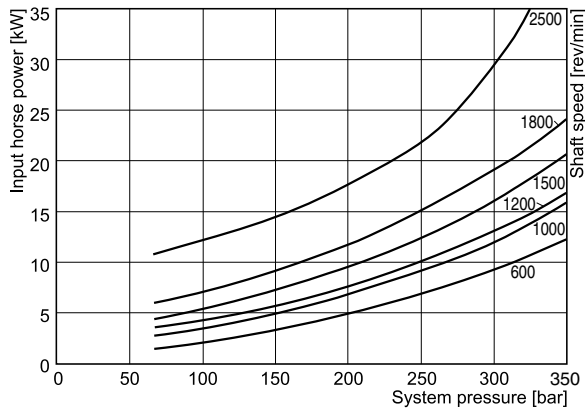
**P3 Series - typical compensated input power
 P3105 Input power - zero stroke**



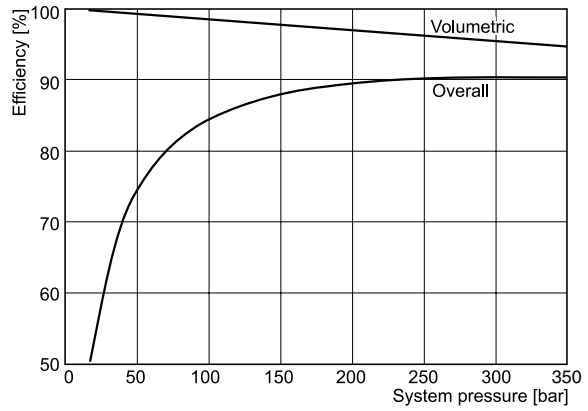
**P3 Series - typical efficiency at full displ. at 1800 rpm
 P3105 Efficiency at 1800 rpm**



P3145 Input power - zero stroke



P3145 Efficiency at 1800 rpm



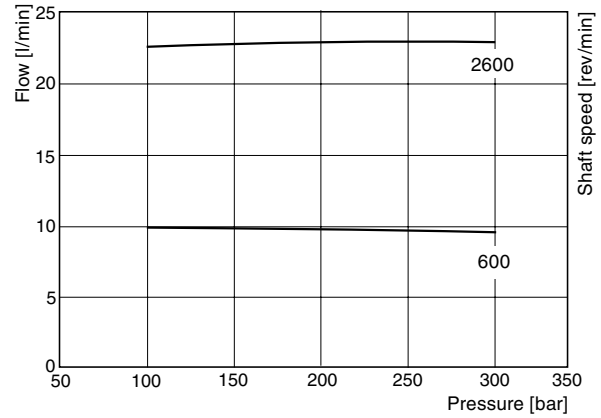
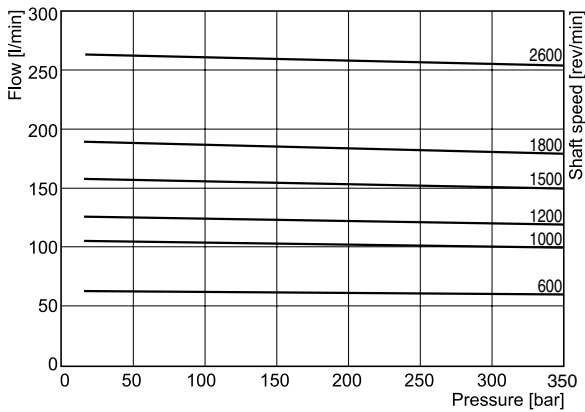
Fluid: Mineral oil ISO VG 32 at 40°C ; Inlet pressure: 1.0 bar (absolute) measured at inlet port.

P3 Series - typical flow vs. pressure

P3 Series - typical compensated drain flow

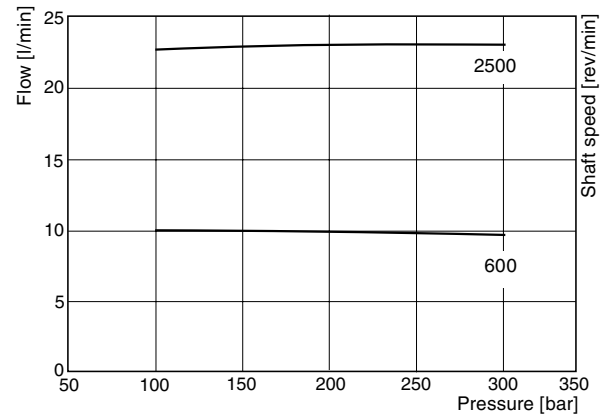
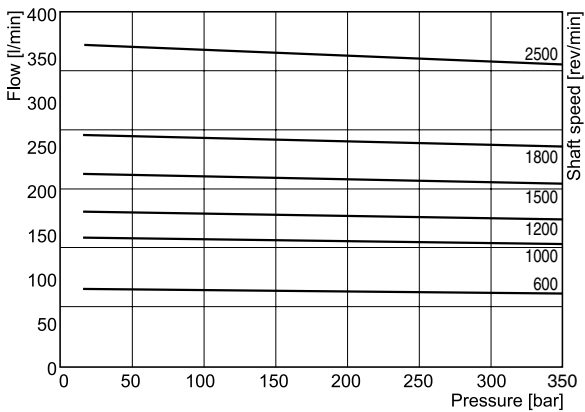
P3105 Outlet flow - full stroke

P3105 Drain flow at zero stroke



P3145 Outlet flow - full stroke

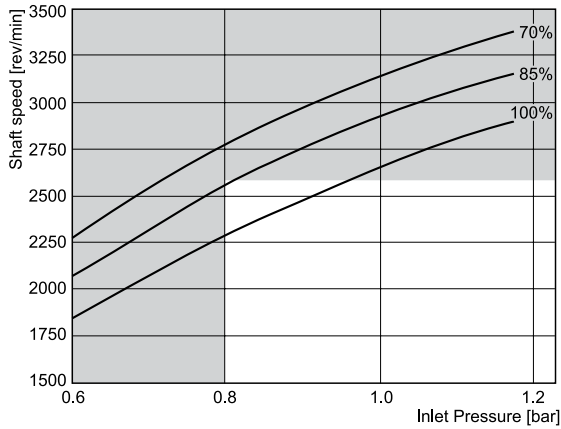
P3145 Drain flow at zero stroke



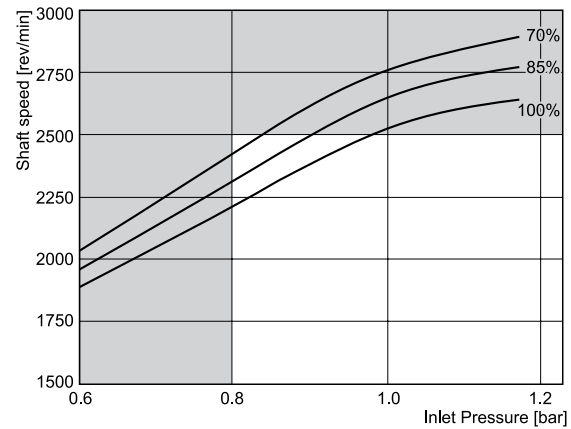
Fluid: Mineral oil ISO VG 32 at 40°C ; Inlet pressure: 1.0 bar (absolute) measured at inlet port.

P3 Series - typical inlet characteristics vs. speed at various percentage displacements

P3105 Inlet characteristics



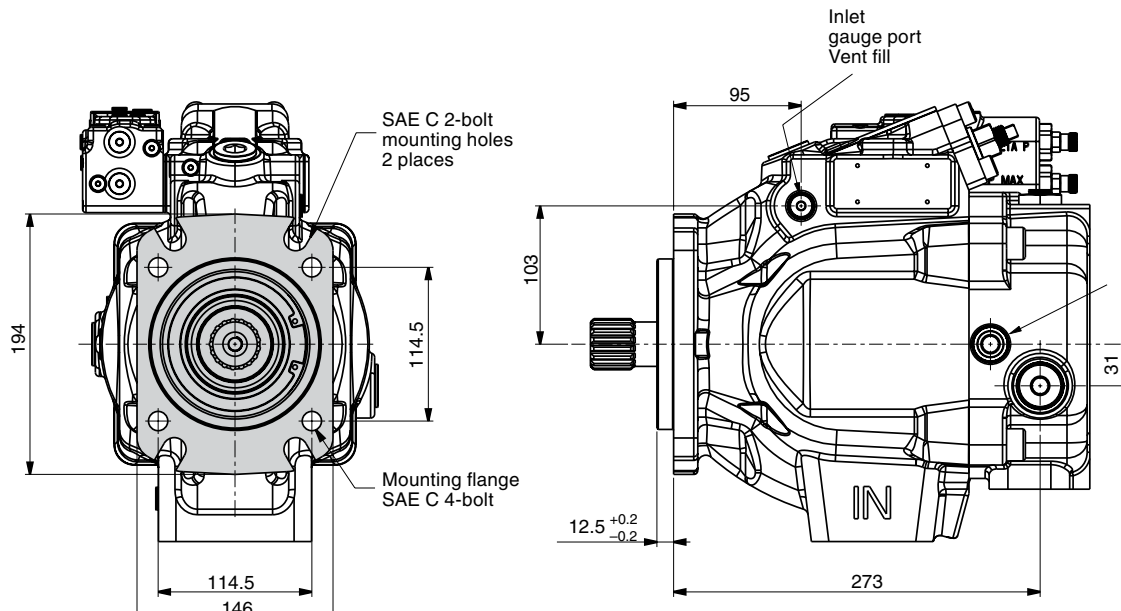
P3145 Inlet characteristics



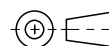
Fluid: Mineral oil ISO VG 32 at 40°C ; Inlet pressure: 1.0 bar (absolute) measured at inlet port.

 For operation at these speeds, please consult manufacturer for approval.

P3105 Mounting flange

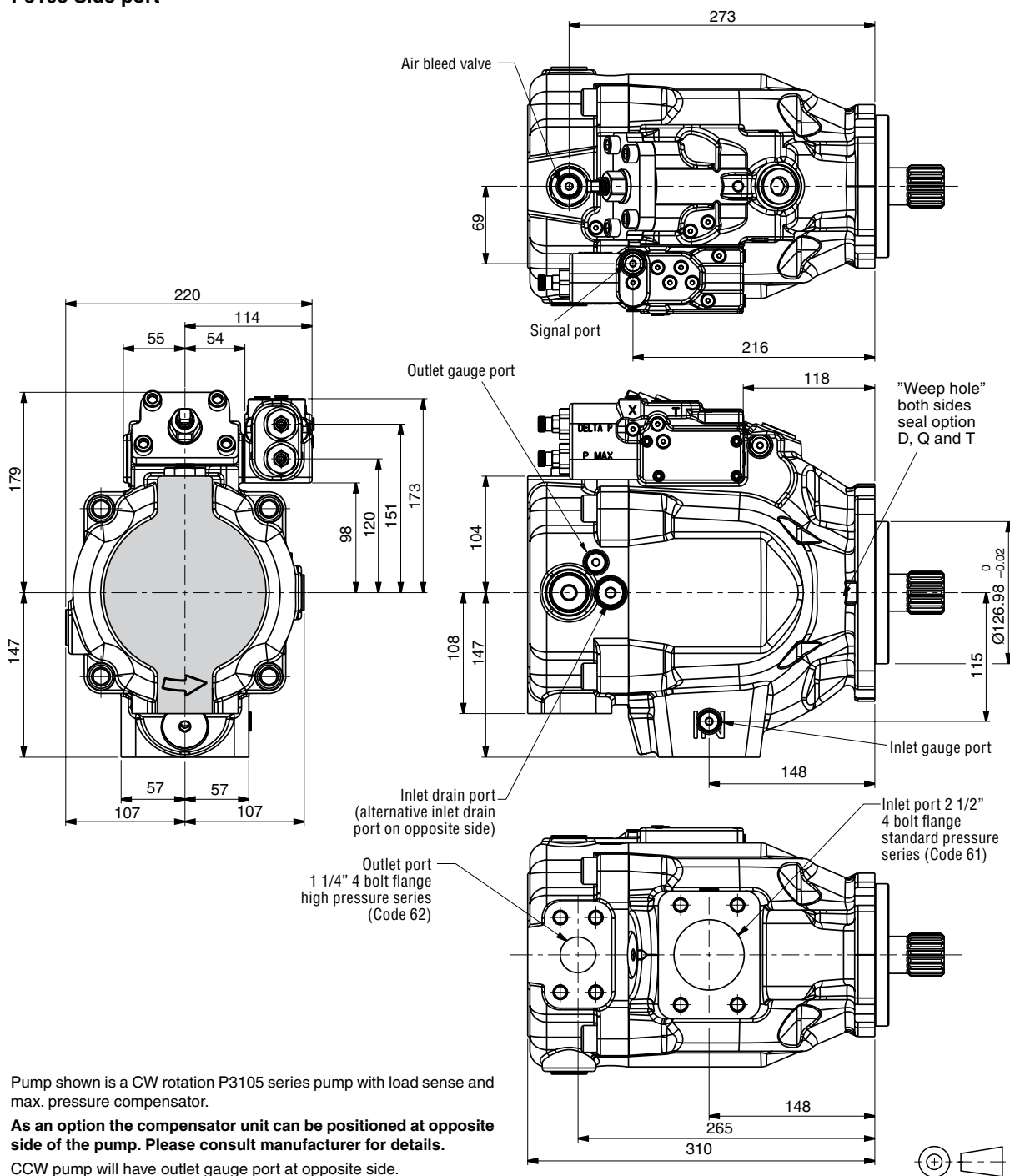


CW pump shown
CCW pump will have outlet gauge port at opposite side



Port ordering code	Drain port	Airbleed port / vent port
"A" side - UNC	SAE-8 straight thread / O-ring port: 3/4 - 16 UN thread	SAE-4 straight thread / O-ring port: 7/16-20 UN thread
"B" side - metric	ISO 6149 straight thread / O-ring port: M18 x 1.5 thread	ISO 6149 straight thread / O-ring port: M12 x 1.5 thread

P3105 Side port



Pump shown is a CW rotation P3105 series pump with load sense and max. pressure compensator.

As an option the compensator unit can be positioned at opposite side of the pump. Please consult manufacturer for details.

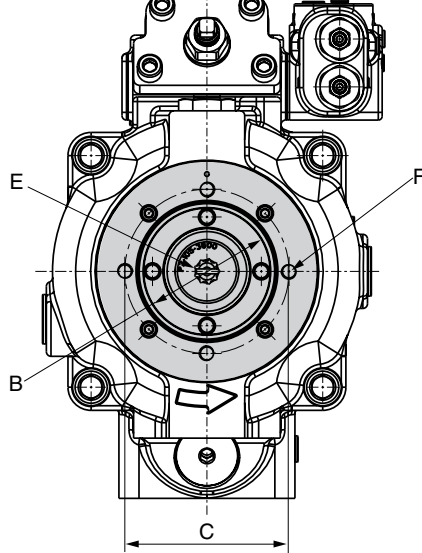
CCW pump will have outlet gauge port at opposite side.

Port ordering code	Drain port	Inlet port	Outlet port	Inlet gauge port / Outlet gauge port / Airbleed port / Signal port
"A" side - UNC	SAE 8 straight thread / O-ring port: 3/4 - 16 UN thread	1/2-13 UNC	1/2-13 UNC	SAE-4 straight thread / O-ring port: 7/16-20 UN thread
"B" side - metric	ISO 6149 straight thread / O-ring port: M18 x 1.5 thread	M12 x 1.75	M12 x 1.75	ISO 6149 straight thread / O-ring port: M12 x 1.5 thread

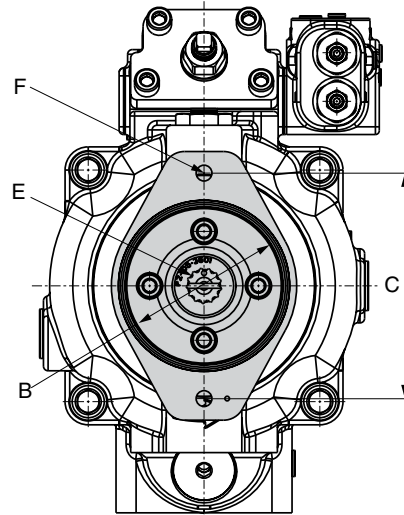


P3105 Thru-drive option

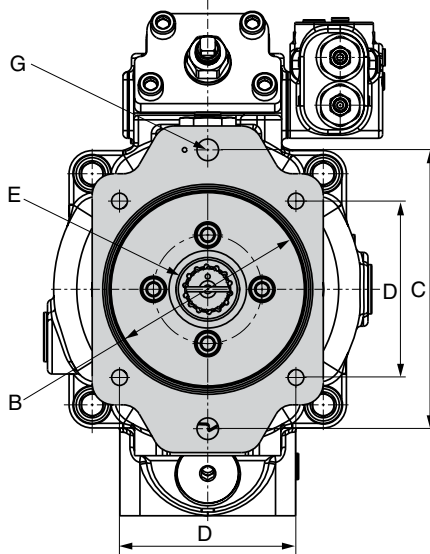
A1 Configuration



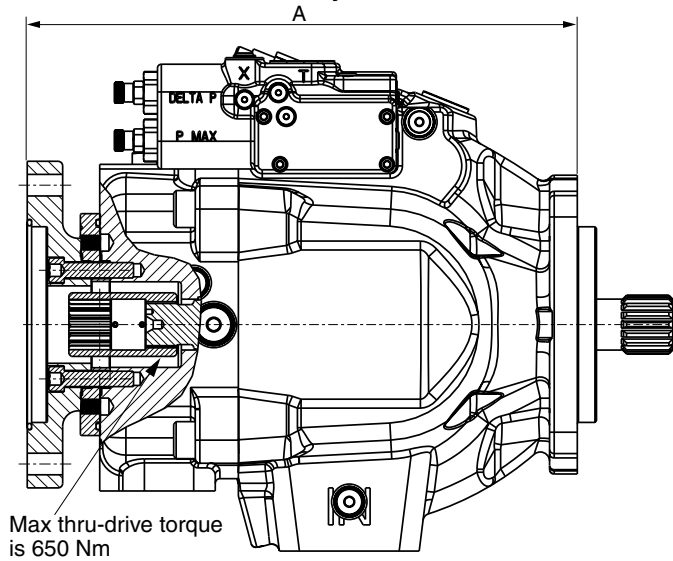
B1 and B2 Configuration



C1 and C3 Configuration



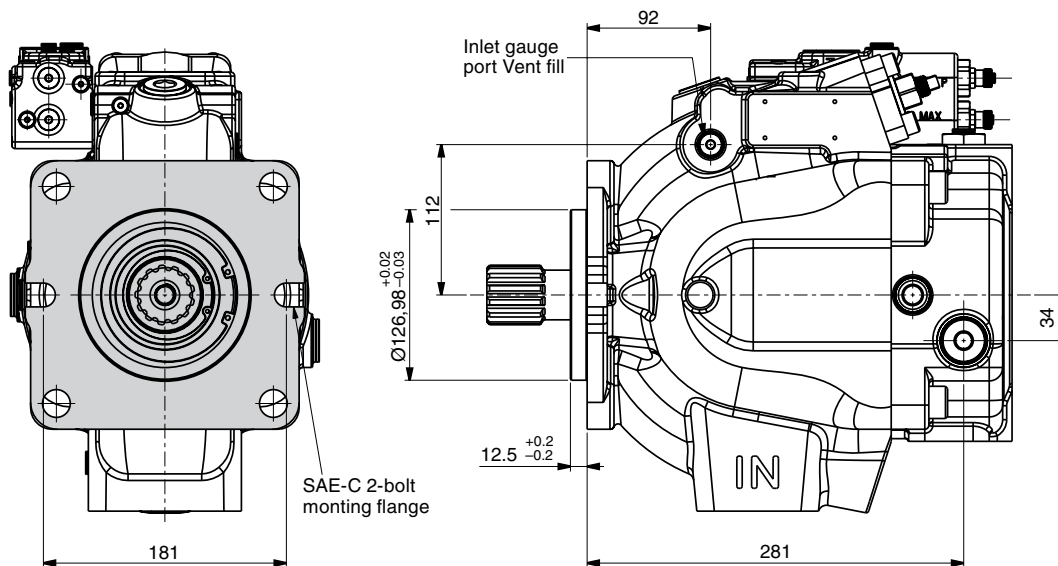
P3105 Partial cut-away of thru-drive area



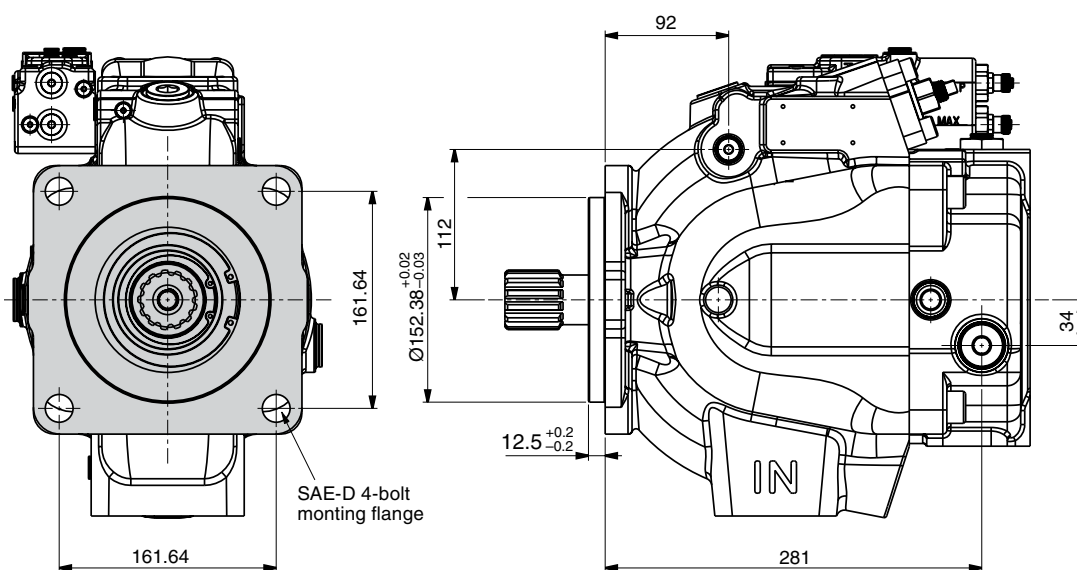
Thru-shaft option	A	B Ø	C	D	E	F UNC	F metric	G UNC	G metric	Weight
A1	323	82.626 82.575	106.3	N/A	SAE-A spline 9 tooth 16/32 pitch	3/ 16 UNC-2B THD	M10 x 1.5 THD	N/A	N/A	63 kg
B1	356	101.676 101.625	146.1	N/A	SAE-B spline 13 tooth 16/32 pitch	1/2-13 UNC-2B THD	M12 x 1.75 THD	N/A	N/A	64 kg
B2	356	101.676 101.625	146.1	N/A	SAE-BB spline 15 tooth 16/32 pitch	1/2-13 UNC-2B THD	M12 x 1.75 THD	N/A	N/A	64 kg
C1 C3	358	127.075 127.025	181	114.5	SAE-C spline 14 tooth 12/24 pitch	1/2-13 UNC-2B THD	M12 x 1.75 THD	5/8-11 UNC- 2B THD	M16 x 2 THD	66 kg

P3145 Mounting flange

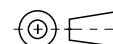
SAE C 2-bolt mounting flange



SAE D 4-bolt mounting flange

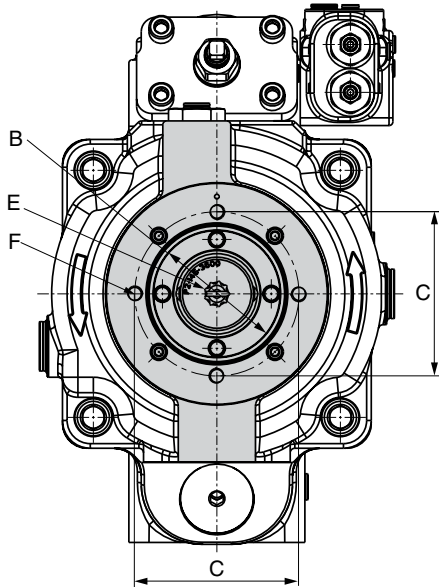


CW pump shown
CCW pump will have outlet gauge port at opposite side

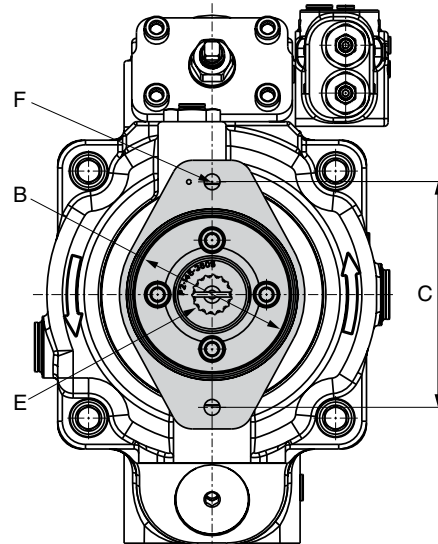


Port ordering code	Drain port	Airbleed port / vent port
"A" side - UNC	SAE 8 straight thread / O-ring port: 3/4 - 16 UN thread	SAE-4 straight thread / O-ring port: 7/16-20 UN thread
"B" side - metric	ISO 6149 straight thread / O-ring port: M18 x 1.5 thread	ISO 6149 straight thread / O-ring port: M12 x 1.5 thread

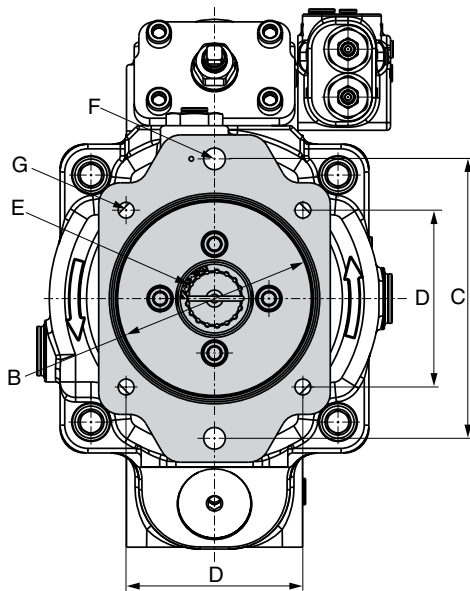
P3145 Thru-drive option
A1 Configuration



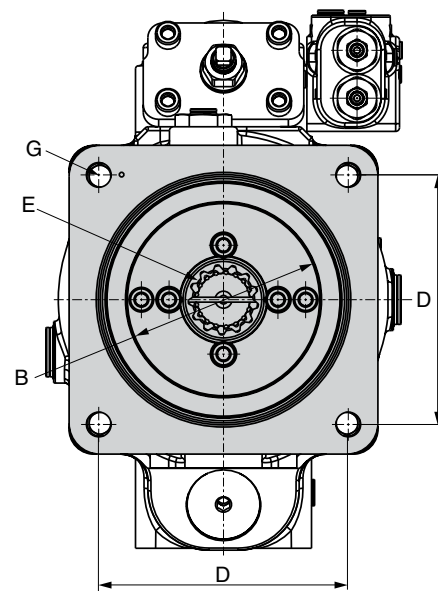
B1 and B2 Configuration



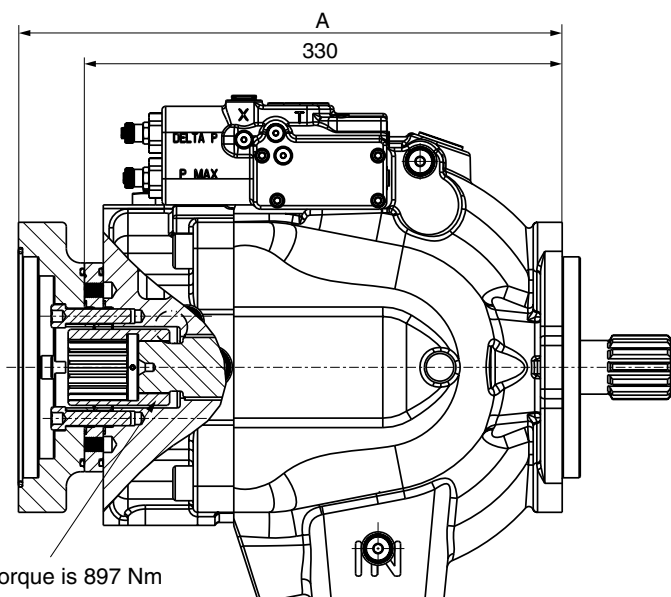
C1, C2, C3 and C4 Configuration



D3 Configuration



P3145 Thru-drive option

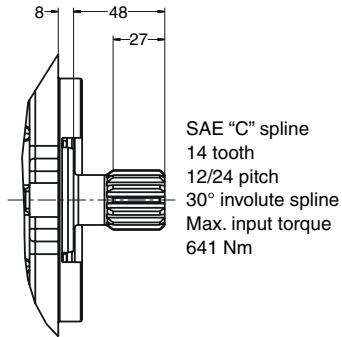


Max thru-drive torque is 897 Nm

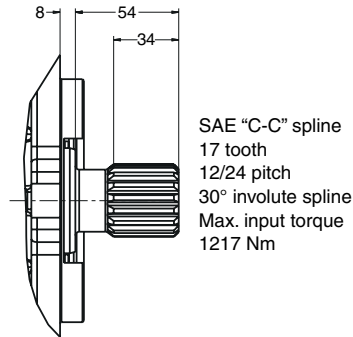
Thru-shaft option	A	B Ø	C	D	E	F UNC	F metric	G UNC	G metric	Weight
A1	329.5	82.626 82.575	106.38	N/A	SAE-A spline 9 tooth 16/32 pitch	3/8-16 UNC-2B THD	M10 x 1.5 THD	N/A	N/A	75.9 kg
B1	362.5	101.676 101.625	146.05	N/A	SAE-B spline 13 tooth 16/32 pitch	1/2-13 UNC-2B THD	M12 x 1.75 THD	N/A	N/A	78.5 kg
B2	362.5	101.676 101.625	146.05	N/A	SAE-BB spline 15 tooth 16/32 pitch	1/2-13 UNC-2B THD	M12 x 1.75 THD	N/A	N/A	78.5 kg
C1	364.5	127.075 127.025	180.98	NA	SAE-C spline 14 tooth 12/24 pitch	5/8-11 UNC-2B THD	M16 x 2 THD	1/2-13 UNC-2B THD	M12 x 1.75 THD	80 kg
C2	364.5	127.075 127.025	180.98	NA	SAE-C spline 17 tooth 12/24 pitch	5/8-11 UNC-2B THD	M16 x 2 THD	1/2-13 UNC-2B THD	M12 x 1.75 THD	80 kg
C3	364.5	127.075 127.025	180.98	114.5	SAE-C spline 14 tooth 12/24 pitch	5/8-11 UNC-2B THD	M16 x 2 THD	1/2-13 UNC-2B THD	M12 x 1.75 THD	80 kg
C4	364.5	127.075 127.025	180.98	114.5	SAE-CC spline 17 tooth 12/24 pitch	5/8-11 UNC-2B THD	M16 x 2 THD	1/2-13 UNC-2B THD	M12 x 1.75 THD	80 kg
D3	375	152.475 152.425	NA	161.65	SAE-D spline 13 tooth 8/16 pitch	NA	NA	3/4-10 UNC-2B THD	M16 x 2 THD	83.7 kg

P3 Shaft options

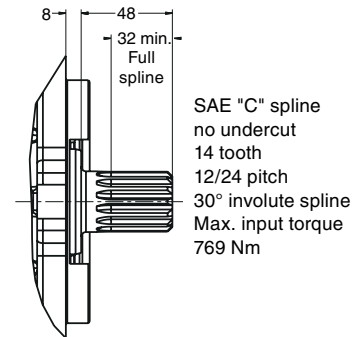
C1



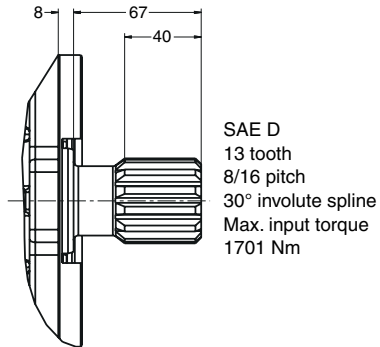
C2



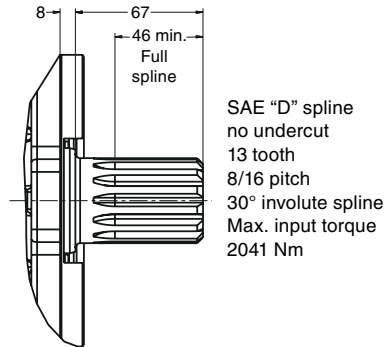
C3



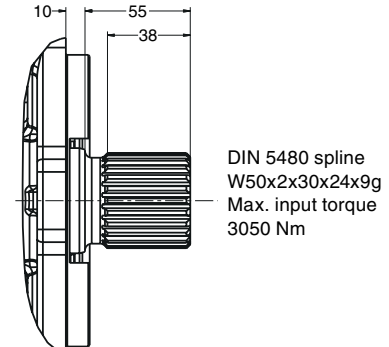
D1



D2

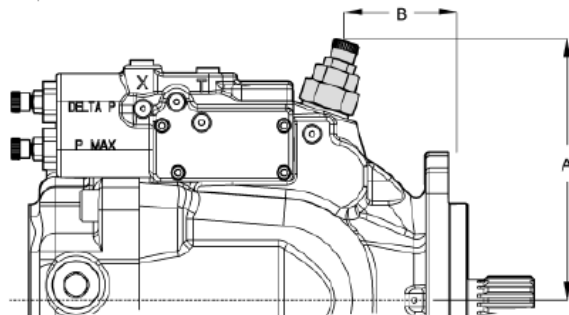


M6



Torque control dimensions

Torque control options "TA", "TB", "TC" and "TD"



	P3105	P3145
A	190	202
B	69	69

Multiple pump combinations - Maximum moment

To avoid excessive front flange loads combinations of multiple pumps might require additional pump support.

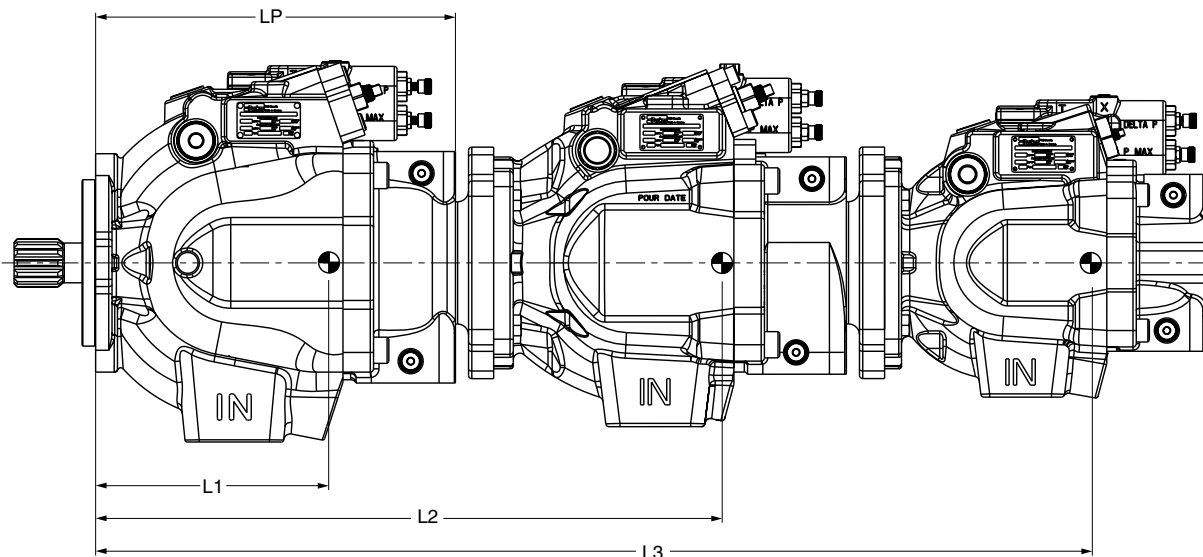


Chart 1. Maximum moment and pump dimensions

		P2060	P2075	P2105	P2145
Maximum Moment	[Nm]	197	266	425	556
Weight	[N]	358	431	618	805
Distance L1	[mm to C/G]	126	145	165	158
Distance Lp	[mm]	264	292	323	329

Chart 2. Through drive adapter plate thickness

LF		P2060	P2075	P2105	P2145
SAE - A Flange	[mm]	0	0	0	0
SAE - B Flange	[mm]	33	33	33	33
SAE - C Flange	[mm]	35	35	35	35
SAE - D Flange	[mm]	-	-	-	45.5

Resulting moment can be calculated by using the following formula:

$$\text{Moment } M = (L1*W1+L2*W2+L3*W3+...)$$

If resulting moment exceeds the maximum value given in chart 1 additional support is mandatory.

Multiple pump combinations - Maximum thru drive torque

		P2060	P2075	P2105/ P3105	P2145/ P3145
Torque	[Nm]	339	424	650	897

Fluid recommendations

- Normal mineral oil
- Premium hydraulic fluid / HLP oil
- Bio-degradable hydraulic fluid
- Synthetic hydraulic fluid
- Fire resistant fluids, water based fluids (HFC)

Note: Maximum system pressure reduced to 210bar for water based fluids. Bearing life time reduced to 25% by using water based fluids.

Viscosity

Min. viscosity for short periods:	10 mm ² /s (cSt)
Normal operating viscosity:	15...40 mm ² /s (cSt)
Max. viscosity for short periods:	1000 mm ² /s (cSt)

Filtration

For maximum pump and system component functionality and life, the system should be protected from contamination by effective filtration.

Fluid cleanliness should be in accordance with ISO classification ISO 4406. The quality of filter elements should be in accordance with ISO standards.

Recommendation for filtration:

Class 21/18/14, according to ISO 4406

Seals

Check hydraulic fluid specification for chemical resistance of seal material.

Check temperature range of seal material and compare with max. system and ambient temperature.

N/D - NBR seals, FPM shaft seal(s) -25 ... +90 °C

B/Q - NBR seals, NBR shaft seal(s) -40 ... +90 °C

V/T - FPM seals, FPM shaft seal(s) -25 ... +115 °C

Note: Above limitations refer to average case drain temperature, which can be up to 20 °C higher than in the reservoir.

Axial / Radial Loads

Units subjected to radial loads require the installation of an outboard bearing. Axial Loads are not permitted.

Parker Worldwide

Europe, Middle East, Africa

AE – United Arab Emirates, Dubai
Tel: +971 4 8127100
parker.me@parker.com

AT – Austria, Wiener Neustadt
Tel: +43 (0)2622 23501-0
parker.austria@parker.com

AT – Eastern Europe, Wiener Neustadt
Tel: +43 (0)2622 23501 900
parker.easteurope@parker.com

AZ – Azerbaijan, Baku
Tel: +994 50 22 33 458
parker.azerbaijan@parker.com

BE/LU – Belgium, Nivelles
Tel: +32 (0)67 280 900
parker.belgium@parker.com

BG – Bulgaria, Sofia
Tel: +359 2 980 1344
parker.bulgaria@parker.com

BY – Belarus, Minsk
Tel: +375 17 209 9399
parker.belarus@parker.com

CH – Switzerland, Etoy
Tel: +41 (0)21 821 87 00
parker.switzerland@parker.com

CZ – Czech Republic, Klecany
Tel: +420 284 083 111
parker.czechrepublic@parker.com

DE – Germany, Kaarst
Tel: +49 (0)2131 4016 0
parker.germany@parker.com

DK – Denmark, Ballerup
Tel: +45 43 56 04 00
parker.denmark@parker.com

ES – Spain, Madrid
Tel: +34 902 330 001
parker.spain@parker.com

FI – Finland, Vantaa
Tel: +358 (0)20 753 2500
parker.finland@parker.com

FR – France, Contamine s/Arve
Tel: +33 (0)4 50 25 80 25
parker.france@parker.com

GR – Greece, Athens
Tel: +30 210 933 6450
parker.greece@parker.com

HU – Hungary, Budaoers
Tel: +36 23 885 470
parker.hungary@parker.com

IE – Ireland, Dublin
Tel: +353 (0)1 466 6370
parker.ireland@parker.com

IT – Italy, Corsico (MI)
Tel: +39 02 45 19 21
parker.italy@parker.com

KZ – Kazakhstan, Almaty
Tel: +7 7273 561 000
parker.easteurope@parker.com

NL – The Netherlands, Oldenzaal
Tel: +31 (0)541 585 000
parker.nl@parker.com

NO – Norway, Asker
Tel: +47 66 75 34 00
parker.norway@parker.com

PL – Poland, Warsaw
Tel: +48 (0)22 573 24 00
parker.poland@parker.com

PT – Portugal, Leca da Palmeira
Tel: +351 22 999 7360
parker.portugal@parker.com

RO – Romania, Bucharest
Tel: +40 21 252 1382
parker.romania@parker.com

RU – Russia, Moscow
Tel: +7 495 645-2156
parker.russia@parker.com

SE – Sweden, Spånga
Tel: +46 (0)8 59 79 50 00
parker.sweden@parker.com

SK – Slovakia, Banská Bystrica
Tel: +421 484 162 252
parker.slovakia@parker.com

SL – Slovenia, Novo Mesto
Tel: +386 7 337 6650
parker.slovenia@parker.com

TR – Turkey, Istanbul
Tel: +90 216 4997081
parker.turkey@parker.com

UA – Ukraine, Kiev
Tel: +380 44 494 2731
parker.ukraine@parker.com

UK – United Kingdom, Warwick
Tel: +44 (0)1926 317 878
parker.uk@parker.com

ZA – South Africa, Kempton Park
Tel: +27 (0)11 961 0700
parker.southafrica@parker.com

North America

CA – Canada, Milton, Ontario
Tel: +1 905 693 3000

US – USA, Cleveland (industrial)
Tel: +1 216 896 3000

US – USA, Elk Grove Village (mobile)
Tel: +1 847 258 6200

Asia Pacific

AU – Australia, Castle Hill
Tel: +61 (0)2-9634 7777

CN – China, Shanghai
Tel: +86 21 2899 5000

HK – Hong Kong
Tel: +852 2428 8008

ID – Indonesia, Tangerang
Tel: +62 21 7588 1906

IN – India, Mumbai
Tel: +91 22 6513 7081-85

JP – Japan, Fujisawa
Tel: +81 (0)4 6635 3050

KR – South Korea, Seoul
Tel: +82 2 559 0400

MY – Malaysia, Shah Alam
Tel: +60 3 7849 0800

NZ – New Zealand, Mt Wellington
Tel: +64 9 574 1744

SG – Singapore
Tel: +65 6887 6300

TH – Thailand, Bangkok
Tel: +662 717 8140

TW – Taiwan, New Taipei City
Tel: +886 2 2298 8987

VN – Vietnam, Ho Chi Minh City
Tel: +84 8 3999 1600

South America

AR – Argentina, Buenos Aires
Tel: +54 3327 44 4129

BR – Brazil, Cachoeirinha RS
Tel: +55 51 3470 9144

CL – Chile, Santiago
Tel: +56 2 623 1216

MX – Mexico, Toluca
Tel: +52 72 2275 4200

Enl. 2013-08-01



EMEA Product Information Centre

Free phone: 00 800 27 27 5374

(from AT, BE, CH, CZ, DE, DK, EE, ES, FI, FR, IE, IL, IS, IT, LU, MT, NL, NO, PL, PT, RU, SE, SK, UK, ZA)

US Product Information Centre

Toll-free number: 1-800-27 27 537

www.parker.com

Your local authorized Parker distributor