

Sterling Hydraulics, part of Sterling Industries PLC, is a recognised world leader in the manufacture of hydraulic cartridge valves and custom manifold blocks. Established for more than 60 years, Sterling has accomplished significant growth with the ever increasing acceptance of hydraulic valve/manifold technology.

A leading manufacturer of hydraulic cartridge valves, the Company has introduced a new High Performance screw-in cartridge valve range. The new range reaches pressures of 420 bar and flows to 500 litres/minute with minimal pressure drop. In addition a new range of solenoid valves and Proportional solenoid valves has been introduced with operating pressures up to 350 bar.

Global availability through over 30 distributors in Europe, Asia and the Far East, with an additional 55 locations across North America ensures effective distribution, engineering and application assistance wherever you are based.

Sterling Hydraulics manufacture product for a whole range of industries.

- Construction and earth moving equipment.
- Agricultural and forestry machines.
- Mining and tunneling machinery.
- Manlifts.
- Military equipment.
- Industrial Equipment and general hydraulic applications.

Sterling Hydraulics has two main design and manufacturing facilities in the UK and USA. From these companies Sterling Hydraulics monitor the requirements of OEMs across the globe and engineer products to meet these demands.

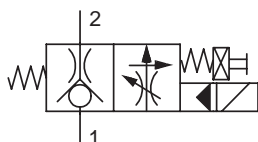
All Sterling Hydraulics Sales Engineers and Distributors are capable of assisting with the design of Custom Manifold Blocks (CMBs). There are many advantages to using CMBs, weight and space savings, reduced installation time, reduced leakage points, reduced pressure drop and cost. Most applications can be resolved in this way, and once the CMB is designed Sterling Hydraulics only supply it to the OEM customer. All CMBs are given unique part numbers and serial numbers so they can be easily identified.

Sterling Hydraulics has one of the most comprehensive and technically superior product ranges in the world, and it is Sterling's commitment to continue in it's goal for improved customer service and application through quality and innovation.

To view all product data sheets visit the website www.sterling-hydraulics.com

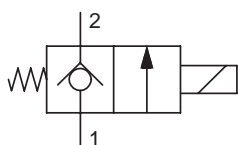
SOLENOID VALVES - poppet, 2 position, 2 way

Unidirectional, normally closed, with flow control adjustment



Flow l/minUSgpm		Pressure bar psi		Coil series type		Model
11	3	210	3000	CC	S	GH02 01
11	3	285	4000	CC	P	GH02 01

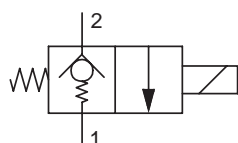
Unidirectional, normally closed, direct acting



Flow l/minUSgpm		Pressure bar psi		Coil series type		Model
1.7	0.45	210	3000	CC	S	GS02 70
1.7	0.45	210	3000	CC	S	GS02 71

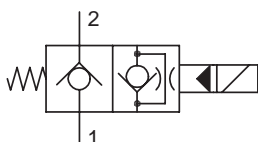
Please note. GS02 70 is the standard, GS02 71 is the zero drops, soft seat version

Unidirectional, normally closed, direct acting, nose to side

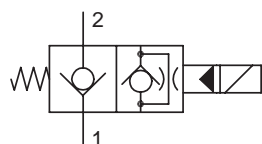


Flow l/minUSgpm		Pressure bar psi		Coil series type		Model
1.7	0.45	350	5000	CC	P	GS02 74

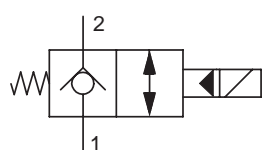
Unidirectional, normally closed, restricted reverse flow



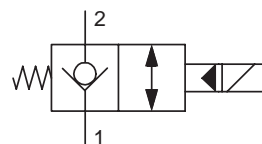
Flow l/minUSgpm		Pressure bar psi		Coil series type		Model
19	5	210	3000	CC	S	GS02 01
38	10	210	3000	CC	S	GS02 02
19	5	350	5000	CC	P	GS02 03
38	10	350	5000	CC	P	GS02 04
75	20	210	3000	CC	S	GS04 02
75	20	350	5000	CC	P	GS04 04
285	75	210	3000	CC	S	GS06 02
285	75	350	5000	CC	P	GS06 04

SOLENOID VALVES - poppet, 2 position, 2 way
Unidirectional, normally closed, restricted reverse flow - nose to side


Flow l/min USgpm		Pressure bar psi		Coil series type		Model
190	50	210	3000	CC	S	GS06 01
190	50	350	5000	CC	P	GS06 03

Unidirectional, normally closed, free reverse flow


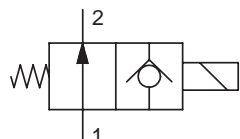
Flow l/min USgpm		Pressure bar psi		Coil series type		Model
19	5	210	3000	CC	S	GS02 05
38	10	210	3000	CC	S	GS02 06
19	5	350	5000	CC	P	GS02 07
38	10	350	5000	CC	P	GS02 08
75	20	210	3000	CC	S	GS04 06
75	20	350	5000	CC	P	GS04 08
285	75	210	3000	CC	S	GS06 06
285	75	350	5000	CC	P	GS06 08

Unidirectional, normally closed, free reverse flow - nose to side


Flow l/min USgpm		Pressure bar psi		Coil series type		Model
190	50	210	3000	CC	S	GS06 05
190	50	350	5000	CC	P	GS06 07

SOLENOID VALVES - poppet, 2 position, 2 way

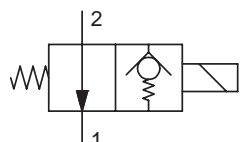
Unidirectional, normally open, direct acting



Flow l/minUSgpm		Pressure bar psi		Coil series type		Model
1.7	0.45	210	3000	CC	S	GS02 75
1.7	0.45	210	3000	CC	S	GS02 76

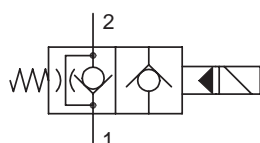
Please note. GS02 75 is the standard, GS02 76 is the zero drops, soft seat version

Unidirectional, normally open, direct acting - nose to side



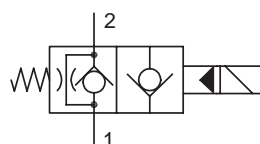
Flow l/minUSgpm		Pressure bar psi		Coil series type		Model
1.7	0.45	350	5000	CC	P	GS02 79

Unidirectional, normally open, restricted reverse flow



Flow l/minUSgpm		Pressure bar psi		Coil series type		Model
15	4	210	3000	CC	S	GS02 11
30	8	210	3000	CC	S	GS02 12
15	4	350	5000	CC	P	GS02 13
30	8	350	5000	CC	P	GS02 14
50	13	210	3000	CC	S	GS04 12
68	18	210	3000	CC	P	GS04 13
50	13	350	5000	CC	P	GS04 14
285	75	210	3000	CC	S	GS06 12
285	75	350	5000	CC	P	GS06 14

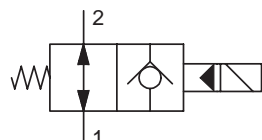
Unidirectional, normally open, restricted reverse flow - nose to side



Flow l/minUSgpm		Pressure bar psi		Coil series type		Model
228	60	210	3000	CC	S	GS06 11
228	60	350	5000	CC	P	GS06 13

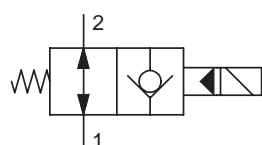
SOLENOID VALVES - poppet, 2 position, 2 way

Unidirectional, normally open, free reverse flow



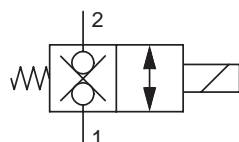
Flow l/minUSgpm		Pressure bar psi		Coil series type		Model
15	4	210	3000	CC	S	GS02 15
30	8	210	3000	CC	S	GS02 16
15	4	350	5000	CC	P	GS02 17
30	8	350	5000	CC	P	GS02 18
50	13	210	3000	CC	S	GS04 16
68	18	210	3000	CC	P	GS04 17
50	13	350	5000	CC	P	GS04 18
285	75	210	3000	CC	S	GS06 16
285	75	350	5000	CC	P	GS06 18

Unidirectional, normally open, free reverse flow - nose to side



Flow l/minUSgpm		Pressure bar psi		Coil series type		Model
228	60	210	3000	CC	S	GS06 15
228	60	350	5000	CC	P	GS06 17

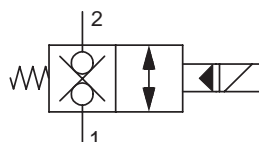
Bidirectional, normally closed, direct acting



Flow l/minUSgpm		Pressure bar psi		Coil series type		Model
1.7	0.45	210	3000	CC	P	GS02 72
1.7	0.45	210	3000	CC	P	GS02 73

Please note. GS02 72 is the standard, GS02 73 is the zero drops, soft seat version

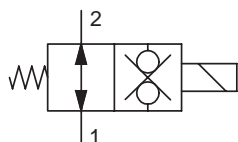
Bidirectional, normally closed



Flow l/minUSgpm		Pressure bar psi		Coil series type		Model
58	15	210	3000	CC	S	GS02 80
58	15	350	5000	CC	P	GS02 81
76	20	210	3000	CC	S	GS04 80
76	20	350	5000	CC	P	GS04 81
285	75	210	3000	CC	S	GS06 80
285	75	350	5000	CC	P	GS06 81

SOLENOID VALVES - poppet, 2 position, 2 way

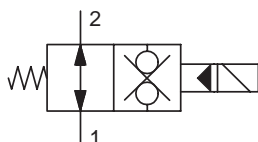
Bidirectional, normally open, direct acting



Flow l/minUSgpm		Pressure bar psi		Coil series type		Model
1.7	0.45	210	3000	CC	P	GS02 77
1.7	0.45	210	3000	CC	P	GS02 78

Please note. GS02 77 is the standard, GS02 78 is the zero drops, soft seat version

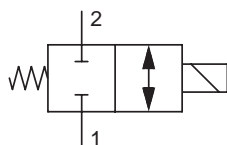
Bidirectional, normally open



Flow l/minUSgpm		Pressure bar psi		Coil series type		Model
58	15	210	3000	CC	S	GS02 85
58	15	350	5000	CC	P	GS02 86
76	20	210	3000	CC	S	GS04 85
76	20	350	5000	CC	P	GS04 86
285	75	210	3000	CC	S	GS06 85
285	75	350	5000	CC	P	GS06 86

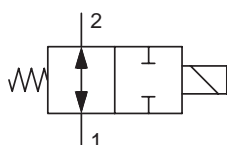
SOLENOID VALVES - spool, 2 position, 2 way

Normally closed



Flow l/minUSgpm		Pressure bar psi		Coil series type		Model
13	3.5	210	3000	CC	S	GS02 20
19	5	210	3000	CC	P	GS02 20
13	3.5	350	5000	CC	P	GS02 22
23	6	210	3000	CA	S	GS04 20
30	8	210	3000	CA	P	GS04 21
23	6	350	5000	CA	P	GS04 22

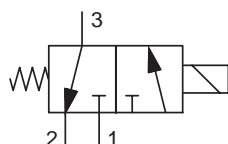
Normally open



Flow l/minUSgpm		Pressure bar psi		Coil series type		Model
13	3.5	210	3000	CC	S	GS02 25
19	5	210	3000	CC	P	GS02 26
13	3.5	350	5000	CC	P	GS02 27
23	6	210	3000	CA	S	GS04 25
30	8	210	3000	CA	P	GS04 26
23	6	350	5000	CA	P	GS04 27

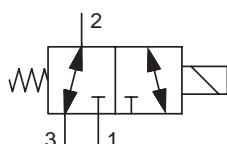
SOLENOID VALVES - spool, 2 position, 3 way

Bottom cylinder port



Flow l/minUSgpm		Pressure bar psi		Coil series type		Model
15	4	210	3000	CC	S	GS02 30
19	5	210	3000	CC	P	GS02 31
15	4	350	5000	CC	P	GS02 32
21	5.5	210	3000	CA	S	GS04 30
30	8	210	3000	CA	P	GS04 31
24	6.5	350	5000	CA	P	GS04 32

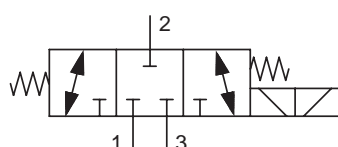
Side cylinder port



Flow l/minUSgpm		Pressure bar psi		Coil series type		Model
11	3	210	3000	CC	S	GS02 33
13	3.5	210	3000	CC	P	GS02 33
11	3	350	5000	CC	P	GS02 35
24.5	6.5	210	3000	CA	S	GS04 33
32	8.5	210	3000	CA	P	GS04 33
26.5	7	350	5000	CA	P	GS04 35

SOLENOID VALVES - spool, 3 position, 3 way

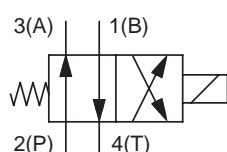
Closed centre



Flow l/minUSgpm		Pressure bar psi		Coil series type		Model
15	4	210	3000	CC	S	GS02 61
19	5	350	5000	CC	P	GS02 61

SOLENOID VALVES - spool, 2 position, 4 way

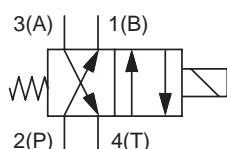
Reversing selector



Flow l/minUSgpm		Pressure bar psi		Coil series type		Model
19	5	350	5000	CC	P	G02 40SX
30	8	350	5000	CA	S	G04 40SX
38	10	350	5000	CA	P	G04 40SX

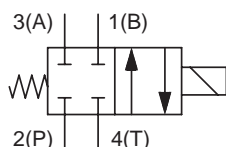
SOLENOID VALVES - spool, 2 position, 4 way

Reversing selector



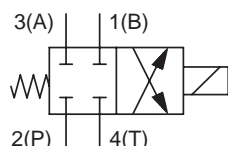
Flow l/minUSgpm		Pressure bar psi		Coil series type		Model
19	5	350	5000	CC	P	G02 41XS
30	8	350	5000	CA	S	G04 40XS
38	10	350	5000	CA	P	G04 40XS

Normally closed selector



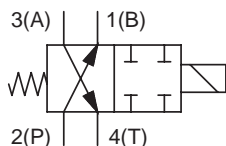
Flow l/minUSgpm		Pressure bar psi		Coil series type		Model
15	4	350	5000	CC	P	G02 40CS

Normally closed selector



Flow l/minUSgpm		Pressure bar psi		Coil series type		Model
19	5	350	5000	CC	P	G02 41CX
30	8	350	5000	CA	S	G04 40CX
38	10	350	5000	CA	P	G04 40CX

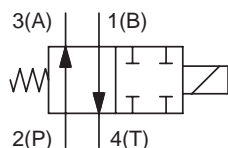
Normally open selector



Flow l/minUSgpm		Pressure bar psi		Coil series type		Model
15	4	350	5000	CC	P	G02 40XC

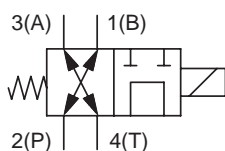
SOLENOID VALVES - spool, 2 position, 4 way

Normally open selector



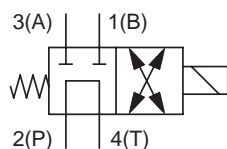
Flow l/minUSgpm		Pressure bar psi		Coil series type		Model
19	5	350	5000	CA	S	G04 40SC
38	10	350	5000	CA	P	G04 40SC

Normally open selector



Flow l/minUSgpm		Pressure bar psi		Coil series type		Model
13	3.5	350	5000	CC	P	G02 41XT
26	7	350	5000	CA	P	G04 40XT

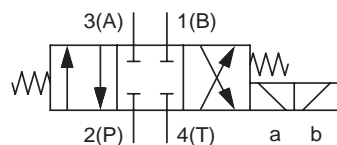
Tandem spool



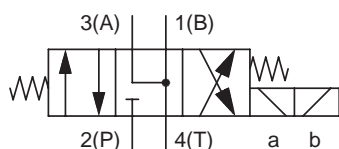
Flow l/minUSgpm		Pressure bar psi		Coil series type		Model
15	4	350	5000	CC	P	G02 41TX
26	7	350	5000	CA	P	G04 40TX

SOLENOID VALVES - spool, 3 position, 4 way

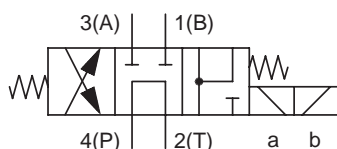
Closed centre



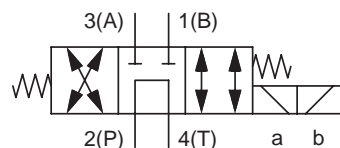
Flow l/minUSgpm		Pressure bar psi		Coil series type		Model
19	5	350	5000	CC	P	G02 51
38	10	350	5000	CA	P	G04 51

SOLENOID VALVES - spool, 3 position, 4 way
Floating centre


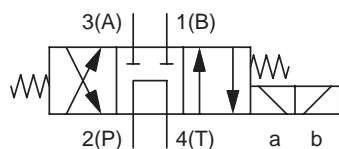
Flow l/minUSgpm		Pressure bar psi		Coil series type	Model
15	4	350	5000	CC P	G02 53
38	10	350	5000	CA P	G04 53

Tandem / regenerative


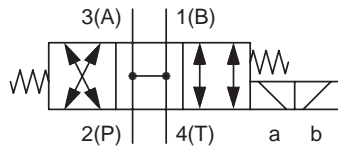
Flow l/minUSgpm		Pressure bar psi		Coil series type	Model
19	5	210	3000	CA P	G04 55

Tandem


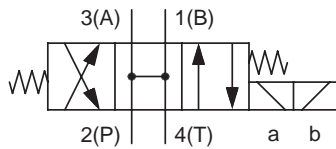
Flow l/minUSgpm		Pressure bar psi		Coil series type	Model
15	4	350	5000	CC P	G02 57

Tandem


Flow l/minUSgpm		Pressure bar psi		Coil series type	Model
26	7	210	3000	CA P	G04 57

SOLENOID VALVES - spool, 3 position, 4 way
Open centre


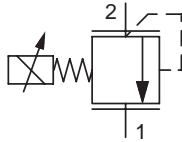
Flow l/min USgpm		Pressure bar psi		Coil series type	Model
15	4	350	5000	CC P	G02 59

Open centre


Flow l/min USgpm		Pressure bar psi		Coil series type	Model
26	7	210	3000	CA P	G04 59

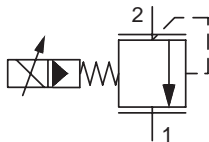
PROPORTIONAL PRESSURE RELIEF

Decreasing pressure with increasing current



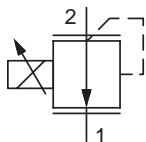
Flow l/min USgpm		Pressure bar psi		Coil series type		Model
5.3	1.4	70	1000	CA	P	AP01B2YR 07A
3.4	0.9	140	2000	CA	P	AP01B2YR 14A
3.0	0.8	235	3400	CA	P	AP01B2YR 21A

Decreasing pressure with increasing current



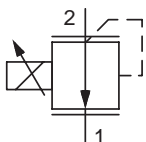
Flow l/min USgpm		Pressure bar psi		Coil series type		Model
95	25	103	1500	CC	P	AP04G2YR 10C
95	25	210	3000	CC	P	AP04G2YR 21C
95	25	350	5000	CC	P	AP04G2YR 35C

Increasing pressure with increasing current



Flow l/min USgpm		Pressure bar psi		Coil series type		Model
5.3	1.4	70	1000	CC	P	AP01B2YP 07C
3.4	0.9	140	2000	CC	P	AP01B2YP 14C
3.0	0.8	210	3000	CC	P	AP01B2YP 21C
1.3	0.35	350	5000	CC	P	AP01B2YP 35C

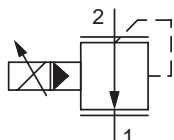
Increasing pressure with increasing current



Flow l/min USgpm		Pressure bar psi		Coil series type		Model
5.3	1.4	70	1000	CA	S	AP02A2 07
5.3	1.4	100	1400	CA	P	
3.0	0.8	210	3000	CA	S	AP02A2 29
3.0	0.8	276	4000	CA	P	
2.3	0.6	350	5000	CA	P	AP02A2 35

PROPORTIONAL PRESSURE RELIEF

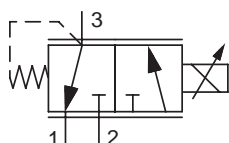
Increasing pressure with increasing current



Flow l/min USgpm		Pressure bar psi		Coil series type		Model
95	25	103	1500	CC	P	AP04G2YP 10C
95	25	210	3000	CC	P	AP04G2YP 21C
95	25	350	5000	CC	P	AP04G2YP 35C

PROPORTIONAL PRESSURE REGULATING relief feature

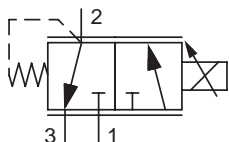
Bottom cylinder port, 2 position, 3 way



Flow l/min USgpm		Pressure bar psi		Coil series type		Model
Regulated						
1.9	0.5	17	250	CC	S	GP01 30
1.9	0.5	22	320	CC	P	

Max input pressure 210 bar 3000 psi.

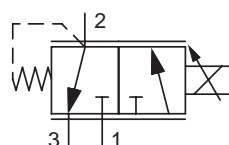
Side cylinder port, 2 position, 3 way



Flow l/min USgpm		Pressure bar psi		Coil series type		Model
Regulated						
19	5	8	120	CC	S	GTP0234 02
		10	150	CC	P	
19	5	17	240	CC	S	GTP0234 03
		21	300	CC	P	
19	5	33	480	CC	S	GTP0234 05
		41	600	CC	P	
19	5	50	720	CC	S	GTP0234 09
		62	900	CC	P	
19	5	100	1440	CC	S	GTP0234 18
		124	1800	CC	P	

Max input pressure 210 bar 3000 psi.

Side cylinder port, 2 position, 3 way

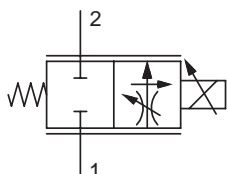


Flow l/min USgpm		Pressure bar psi		Coil series type		Model
Regulated						
30	8	12	170	CA	S	GTP0434 02
		14	200	CA	P	
30	8	19	280	CA	S	GTP0434 03
		24	350	CA	P	
30	8	28	400	CA	S	GTP0434 05
		35	500	CA	P	
30	8	52	750	CA	S	GTP0434 09
		62	900	CA	P	

Max input pressure 210 bar 3000 psi.

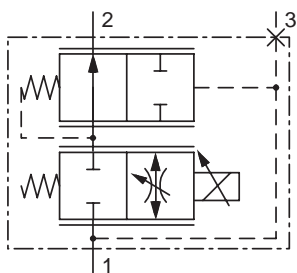
PROPORTIONAL FLOW REGULATOR

2 way, partially pressure compensated, normally closed



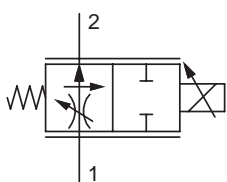
Flow l/minUSgpm		Pressure bar psi		Coil series type		Model
13.3	3.5	210	3000	CC	S	HP02C 21
22.8	6	210	3000	CC	P	
30	8	210	3000	CA	S	HP04C 21
36	9.5	210	3000	CA	P	

2 way, pressure compensated, normally closed



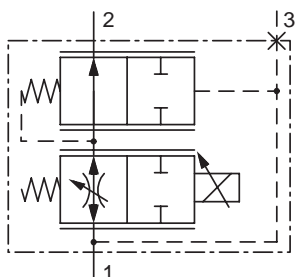
Flow l/minUSgpm		Pressure bar psi		Coil series type		Model
7.5	2	210	3000	CC	S	JP02C 20 JP02C 21 JP02C 21
15	4	210	3000	CC	S	
23	6	210	3000	CC	P	
30	8	210	3000	CA	S	JP04C 21 JP04C 21
36	9.5	210	3000	CA	P	

2 way, partially pressure compensated, normally open



Flow l/minUSgpm		Pressure bar psi		Coil series type		Model
19	5	210	3000	CC	P	HP02P 21 HP04P 21
30	8	210	3000	CA	P	

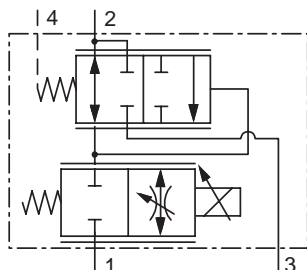
2 way, pressure compensated, normally open



Flow l/minUSgpm		Pressure bar psi		Coil series type		Model
9.5	2.5	210	3000	CC	S	JP02P 20 JP02P 21
19	5	210	3000	CC	P	
36	9.5	210	3000	CA	P	JP04P 21

PROPORTIONAL FLOW REGULATOR

3 way, pressure compensated, priority style, normally closed

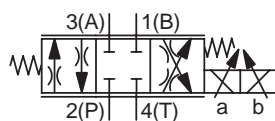


Flow l/minUSgpm	Pressure		Coil		Model
	bar	psi	series	type	
Regulated					
26 7	210	3000	CA	S	JP04C 31
30 8	210	3000	CA	P	JP04C 31

Max input flow 60l/min 16USgpm.

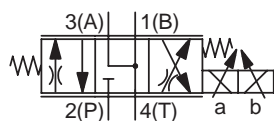
PROPORTIONAL DIRECTIONAL

3 position, 4 way, closed centre spool

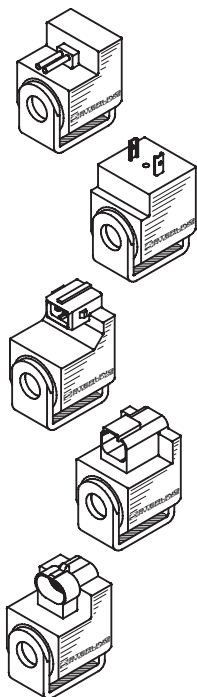


Flow l/minUSgpm	Pressure		Coil		Model
	bar	psi	series	type	
13.3 3.5	350	5000	CC	P	GP02 51
5.3 1.4	350	5000	CC	P	GP02 51L
21 5.5	350	5000	CC	P	GP02 52
32 8.5	350	5000	CA	P	GP04 51
15 4.0	350	5000	CA	P	GP04 51HL
19 5.0	350	5000	CA	P	GP04 51HLH

3 position, 4 way, floating centre spool



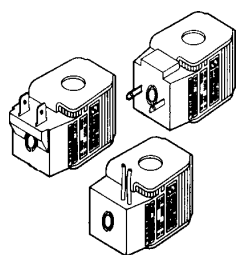
Flow l/minUSgpm	Pressure		Coil		Model
	bar	psi	series	type	
5.3 1.4	350	5000	CC	P	GP02 53L
14 3.8	350	5000	CC	P	GP02 53
17 4.5	350	5000	CC	P	GP02 54
45 12	350	5000	CA	P	GP04 53
30 8	350	5000	CA	P	GP04 53HL
38 10	350	5000	CA	P	GP04 53HLH

COILS C4 SERIES

C4 SERIES 1/2" ID

RATING	STANDARD		PUISSANT	
	WATTS	14		19
VOLTS	12V DC	24V DC	12V DC	24V DC
AMPS	1.16	0.58	1.58	0.79
OHMS	10.3	41.2	7.6	30.3
COIL	C4S012	C4S024	C4P012	C4P024

COIL WATTAGE	S STANDARD P PUISSANT
COIL VOLTAGE	012 12V DC 024 24V DC
COIL TERMINAL	A AMP JUNIOR D DIN 43650 H DEUTSCH (DT04-2P) L DOUBLE LEAD WIRE K PACKARD METRI-PACK® 150 SERIES CONNECTOR (12162000 style) S DOUBLE SPADE

DIN mating connector: Sterling # 8CHW02PG9N
 Deutsch mating connector: # DT06-2S
 Packard metri-pack mating connector: # 12052641

COILS CA / CC SERIES


SERIES	TYPE	CODE
CC series 1/2" I.D.	Standard 14W	CCS
CC series 1/2" I.D.	Puissant 19W	CCP
CA series 5/8" I.D.	Standard 18 W	CAS
CA series 5/8" I.D.	Puissant 28 W	CAP

Voltages:

12V DC
 24V DC
 115V AC
 230V AC

Terminals:

Double spade (DC only)
 Double lead (DC only)
 DIN 43650 (AC or DC)
 Double lead wire with conduit connector (AC only)
 Double lead wire with female Packard connector (DC only)
 Double lead wire with male Packard connector (DC only)
 Double screw (DC only)
 Single screw (internally grounded)
 Double screw with 3 Amp diode
 AMP junior with 3 Amp diode (CC coils only)
 Double lead with Deutsch connector (DC only)

(Additional voltages and terminals are available.)

NOTE: These Sterling solenoid products may be protected under one or more of the following U.S. Patents: USA 5002253, 5072752, 5117869, 5156184, 5271599, 5299600, 5205531, 5842679, 6161585, 5842679, EP0538986B1 - European.

ELECTRONIC CONTROLLERS

Standard

Supply Voltage			Current		Fixed Frequency		Coil Resistance	Ramp adjust		Part Number	Coil Reference
Min	Nom	Max	Nom	Max				Min	Max		
10V	12V	15V	1.58A	1.6A	110Hz	+/-5%	7.5 Ohm	-	-	XPRO902	CC*012D
										XPRO902	C4*012D
										XPRO902	CAS012D
18V	24V	30V	0.79A	1.0A	110Hz	+/-5%	30 Ohms	-	-	XPRO904	CC*024D
										XPRO904	C4*024D
										XPRO904	CAS024D
10V	12V	15V	2.5A	2.6A	110Hz	+/-5%	4.8 Ohm	-	-	XPRO932	CAP012D
18V	24V	30V	1.25A	1.4A	110Hz	+/-5%	19 Ohms	-	-	XPRO934	CAP024D

With dither adjust

Supply Voltage			Current		Fixed Frequency		Coil Resistance	Ramp adjust		Part Number	Coil Reference
Min	Nom	Max	Nom	Max				Min	Max		
10V	12V	15V	1.58A	1.6A	95Hz	230Hz	7.5 Ohm	-	-	XPRO902d	CC*012D
										XPRO902d	C4*012D
										XPRO902d	CAS012D
18V	24V	30V	0.79A	1.0A	95Hz	230Hz	30 Ohms	-	-	XPRO904d	CC*024D
										XPRO904d	C4*024D
										XPRO904d	CAS024D
10V	12V	15V	2.5A	2.6A	95Hz	230Hz	4.8 Ohm	-	-	XPRO932d	CAP012D
18V	24V	30V	1.25A	1.4A	95Hz	230Hz	19 Ohms	-	-	XPRO934d	CAP024D

With I min (0-60% of I max), dither adjust and Ramp adjust

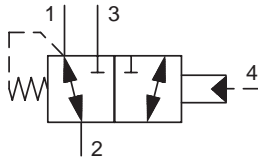
Supply Voltage			Current		Fixed Frequency		Coil Resistance	Ramp adjust		Part Number	Coil Reference
Min	Nom	Max	Nom	Max				Min	Max		
10V	12V	15V	1.58A	1.6A	95Hz	230Hz	7.5 Ohm	200mS	8 Sec	XPRO902rid	CC*012D
										XPRO902rid	C4*012D
										XPRO902rid	CAS012D
18V	24V	30V	0.79A	1.0A	95Hz	230Hz	30 Ohms	200mS	8 Sec	XPRO904rid	CC*024D
										XPRO904rid	C4*024D
										XPRO904rid	CAS024D
10V	12V	15V	2.5A	2.6A	95Hz	230Hz	4.8 Ohm	200mS	8 Sec	XPRO932rid	CAP012D
18V	24V	30V	1.25A	1.4A	95Hz	230Hz	19 Ohms	200mS	8 Sec	XPRO934rid	CAP024D

Soft start controllers

Description	Supply Voltage	Power	Max Current	Part	Coil
Soft start	12V	36W	3.0A	XPRO704	12/24V
Soft start	24V	36W	3.0A	XPRO704	DC DIN
Soft start, soft stop	12V	36W	3.0A	XPRO704b	12/24V
Soft start, soft stop	24V	36W	3.0A	XPRO704b	DC DIN
Powersaver	12V	36W	3.0A	XPRO804	12/24V
Powersaver	24V	36W	3.0A	XPRO804	DC DIN

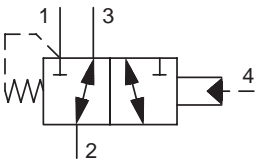
PILOT OPERATED DIRECTIONAL VALVES

Three way, external pilot, internal vent



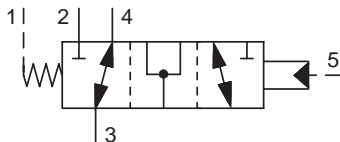
Flow		Pressure		Model
l/min	USgpm	bar	psi	
90	24	420	6000	N04A4

Three way, external pilot, internal vent



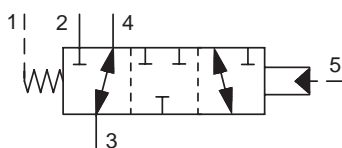
Flow		Pressure		Model
l/min	USgpm	bar	psi	
90	24	420	6000	N04B4

Three way, two position, external drain (transition condition: all ports open)



Flow		Pressure		Model
l/min	USgpm	bar	psi	
125	33	420	6000	N5A125
400	105	420	6000	N5A300

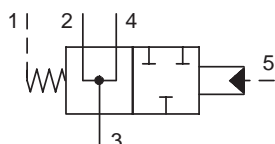
Three way, two position, external drain (transition condition: all ports closed)



Flow		Pressure		Model
l/min	USgpm	bar	psi	
125	33	420	6000	N5B125
400	105	420	6000	N5B300

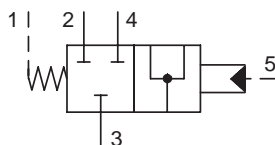
PILOT OPERATED DIRECTIONAL VALVES

Three way, two position, external drain



Flow l/min	USgpm	Pressure		Model
		bar	psi	
125	33	420	6000	N5C125
400	105	420	6000	N5C300

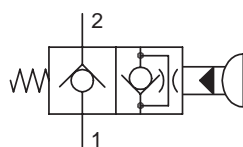
Three way, two position, external drain



Flow l/min	USgpm	Pressure		Model
		bar	psi	
125	33	420	6000	N5D125

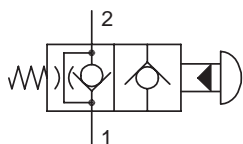
MANUAL VALVES - poppet, 2 position, 2 way

Normally closed



Flow l/min	USgpm	Pressure		Model
		bar	psi	
45	12	210	3000	GM02 01

Normally open

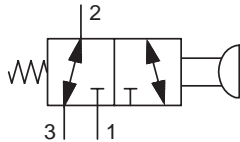


Flow l/min	USgpm	Pressure		Model
		bar	psi	
45	12	350	5000	GM02 12

To view all product data sheets visit the website www.sterling-hydraulics.com

MANUAL VALVES - spool, 2 position, 3 way

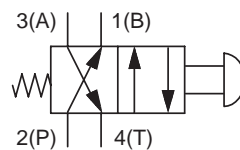
Pull to shift, spring return



Flow		Pressure		Model
l/min	USgpm	bar	psi	Page
19	5	350	5000	GM02 33

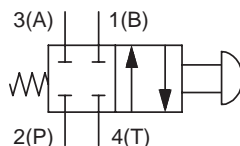
MANUAL VALVES - spool, 2 position, 4 way

Reversing



Flow		Pressure		Model
l/min	USgpm	bar	psi	
15	4	350	5000	GM02 40XS

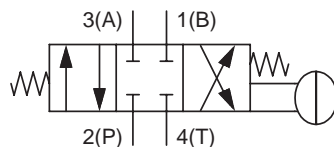
Normally closed



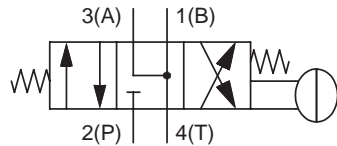
Flow		Pressure		Model
l/min	USgpm	bar	psi	
15	4	350	5000	GM02 40CS

MANUAL VALVES - spool, 3 position, 4 way

Closed centre

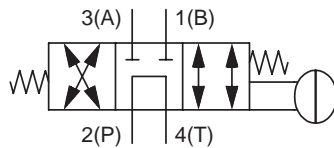


Flow		Pressure		Model
l/min	USgpm	bar	psi	
17	4.5	350	5000	GM02 51

MANUAL VALVES - spool, 3 position, 4 way
Floating centre


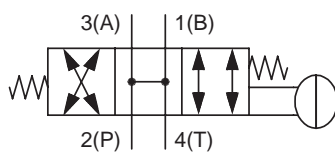
Flow		Pressure		Model
l/min	USgpm	bar	psi	

19	5	350	5000	GM02 53
----	---	-----	------	----------------

Tandem centre


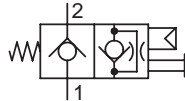
Flow		Pressure		Model
l/min	USgpm	bar	psi	

15	4	350	5000	GM02 57
----	---	-----	------	----------------

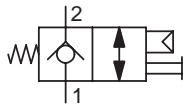
Open centre


Flow		Pressure		Model
l/min	USgpm	bar	psi	

15	4	350	5000	GM02 59
----	---	-----	------	----------------

AIR PILOT DIRECTIONAL, poppet, 2 position, 2 way, normally closed
Restricted reverse flow


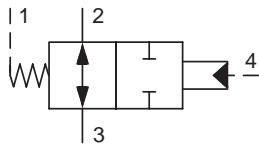
Flow		Pressure		Model
l/min	USgpm	bar	psi	
45	12	210	3000	GA02 01

Free reverse flow


Flow		Pressure		Model
l/min	USgpm	bar	psi	
45	12	210	3000	GA02 05

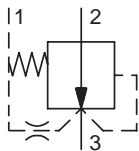
DIVERTER VALVES

Normally open, two way, with external pilot and vent



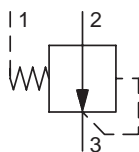
Flow		Pressure		Model
l/min	USgpm	bar	psi	
80	21	420	6000	R04A4

Normally open, spool type, vent to close



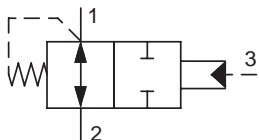
Flow		Pressure		Model
l/min	USgpm	bar	psi	
58	15	420	6000	R04G3
160	42	420	6000	R06G3

Normally open, spool type, vent to close



Flow		Pressure		Model
l/min	USgpm	bar	psi	
58	15	420	6000	R04H3
160	42	420	6000	R06H3

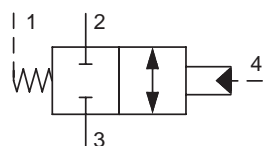
Normally open, pilot to close valve, pressure compensating element



Flow		Pressure		Model
l/min	USgpm	bar	psi	
80	21	420	6000	R04C3

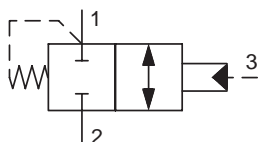
DIVERTER VALVES

Normally closed, two way with external pilot and vent



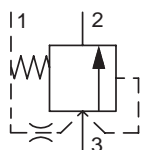
Flow		Pressure		Model
l/min	USgpm	bar	psi	
80	21	420	6000	R04B4

Normally closed, pilot to open



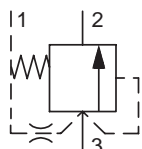
Flow		Pressure		Model
l/min	USgpm	bar	psi	
100	26	420	6000	R04D3

Normally closed, spool type, pilot to close



Flow		Pressure		Model
l/min	USgpm	bar	psi	
170	45	420	6000	R04E3
400	106	420	6000	R06E3
500	132	420	6000	R08E3

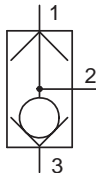
Normally closed, spool type, vent to open



Flow		Pressure		Model
l/min	USgpm	bar	psi	
170	45	420	6000	R04F3
400	106	420	6000	R06F3
500	132	420	6000	R08F3

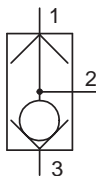
SHUTTLE VALVES

Ball type, two position, three way



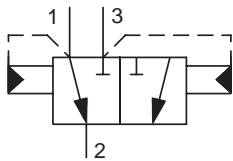
Flow		Pressure		Model
l/min	USgpm	bar	psi	
7	1.85	420	6000	KSWA3 (insert) K02A3
50	13	420	6000	
90	24	420	6000	K04A3

Poppet type, two position, three way



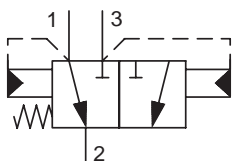
Flow		Pressure		Model
l/min	USgpm	bar	psi	
38	10	350	5000	K2A005

Two position, three way



Flow		Pressure		Model
l/min	USgpm	bar	psi	
90	24	420	6000	K04D3

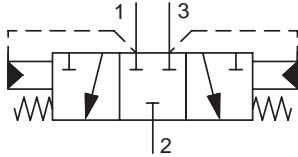
Two position, three way, spring offset



Flow		Pressure		Model
l/min	USgpm	bar	psi	
90	24	420	6000	K04B3

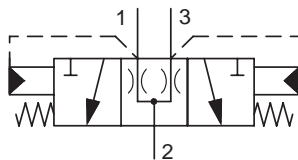
SHUTTLE VALVES

Three position, three way, spring centred



Flow		Pressure		Model
l/min	USgpm	bar	psi	
100	26	420	6000	K04C3
175	46	350	5000	K3A125

Three way, three position, spring centred, all ports open in centred condition



Flow		Pressure		Model
l/min	USgpm	bar	psi	
100	26	420	6000	K04F3

CHECK VALVES

Ball type



Flow		Pressure		Pilot Ratio	Model
l/min	USgpm	bar	psi		
6	1.6	420	6000	-	D0WB2
80	21	420	6000	-	D02B2
160	42	420	6000	-	D04B2

Poppet type



Flow		Pressure		Pilot Ratio	Model
l/min	USgpm	bar	psi		
500	132	250	3625	-	D06B2H
500	132	420	6000	-	D06B2P

Poppet type



Flow		Pressure		Pilot Ratio	Model
l/min	USgpm	bar	psi		
500	132	420	6000	-	D06C2

Ball type, check insert



Flow		Pressure		Pilot Ratio	Model
l/min	USgpm	bar	psi		
30	8	420	6000	-	D1A025
145	38	420	6000	-	D1A060

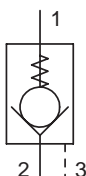
CHECK VALVES

Poppet type, check insert



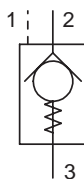
Flow		Pressure		Pilot	Model
l/min	USgpm	bar	psi	Ratio	
500	132	420	6000	-	D1B125

Ball type, pilot to open



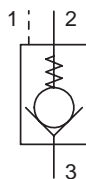
Flow		Pressure		Pilot	Model
l/min	USgpm	bar	psi	Ratio	
35	9	240	3500	3:1	D02D3

Poppet type, pilot to open



Flow		Pressure		Pilot	Model
l/min	USgpm	bar	psi	Ratio	
150	40	420	6000	4:1	D3B125
30	8	420	6000	4:1	D4A020
60	16	420	6000	4:1	D4A040
140	37	420	6000	4:1	D4A055

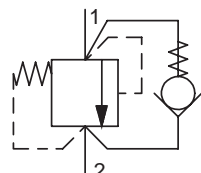
Ball type, pilot to close



Flow		Pressure		Pilot	Model
l/min	USgpm	bar	psi	Ratio	
80	21	420	6000	2:1	D5A040
140	37	420	6000	2:1	D5A055

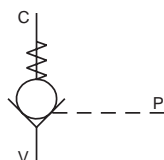
CHECK VALVES

Poppet type, with surge relief



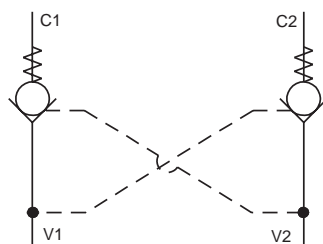
Flow		Pressure		Pilot	Model
l/min	USgpm	bar	psi	Ratio	
150	40	420	6000	-	D04F2

Pilot pistons - Single, use with standard check valves to convert to pilot operation



Flow		Pressure		Pilot	Model
l/min	USgpm	bar	psi	Ratio	
40	10.6	420	6000	4:1	PP02SP <small>(use with D02B2)</small>
135	36	420	6000	3:1	PP04SP <small>(use with D04B2)</small>
340	90	420	6000	3:1	PP06SP <small>(use with D06B2)</small>

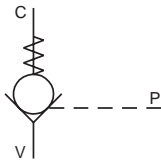
Pilot pistons - Dual, use with standard check valves to convert to pilot operation



Flow		Pressure		Pilot	Model
l/min	USgpm	bar	psi	Ratio	
40	10.6	420	6000	4:1	PP02DP <small>(use with 2x D02B2)</small>
135	36	420	6000	3:1	PP04DP <small>(use with 2x D04B2)</small>
340	90	420	6000	3:1	PP06DP <small>(use with 2x D06B2)</small>

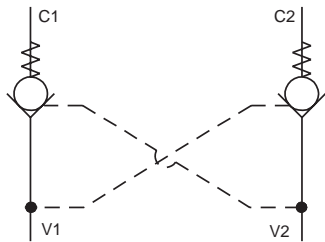
CHECK VALVE PACKAGES

Single pilot operated check



Flow		Pressure		Pilot	Model
l/min	USgpm	bar	psi	Ratio	
40	11	420	6000	4:1	PP02SP*
135	36	420	6000	3:1	PP04SP*
340	90	420	6000	3:1	PP06SP*

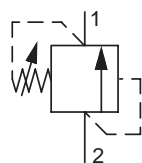
Dual pilot operated check



Flow		Pressure		Pilot	Model
l/min	USgpm	bar	psi	Ratio	
40	11	420	6000	4:1	PP02DP*
135	36	420	6000	3:1	PP04DP*
340	90	420	6000	3:1	PP06DP*

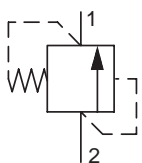
RELIEF VALVES

Direct acting, poppet type



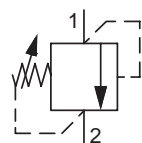
Flow		Pressure		Model
l/min	USgpm	bar	psi	
6	1.6	10-210	145-3000	*A02A2H
6	1.6	10-420	145-6000	*A02A2P
30	8	2-100	29-1450	*A02B2F
30	8	5-210	72-3000	*A02B2H
30	8	5-420	72-6000	*A02B2P
100	26	5-210	72-3000	*A04B2H
100	26	5-420	72-6000	*A04B2P

Direct acting, poppet type, preset



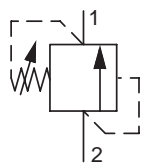
Flow		Pressure		Model
l/min	USgpm	bar	psi	
100	26	5-150	72-2175	A04B2GY
100	26	5-310	72-4495	A04B2LY

Direct acting, poppet type, side to nose



Flow		Pressure		Model
l/min	USgpm	bar	psi	
60	16	2-100	29-1450	*A02D2F
60	16	5-210	72-3000	*A02D2H
60	16	50-350	725-5000	*A02D2M
150	40	5-210	72-3000	*A04D2H
150	40	5-350	72-5000	*A04D2M

Direct acting, damped, poppet type

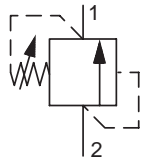


Flow		Pressure		Model
l/min	USgpm	bar	psi	
60	16	5-210	72-3000	A04R2H
60	16	5-350	72-5000	A04R2M

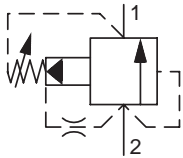
* Also available, non-adjustable version please see data sheet for ordering details.

RELIEF VALVES

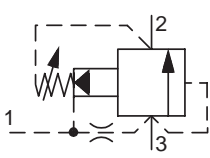
Direct acting, spool type

	Flow		Pressure		Model
	l/min	USgpm	bar	psi	
	200	53	2-250	29-725	*A04C2D
	200	53	2-100	29-1450	*A04C2F

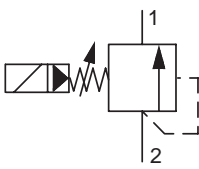
Pilot operated, spool type

	Flow		Pressure		Model
	l/min	USgpm	bar	psi	
	200	53	10-210	145-3000	*A04G2H
	200	53	10-420	145-6000	*A04G2P
	400	106	10-210	145-3000	*A06G2H
	400	106	10-420	145-6000	*A06G2P

Pilot operated, spool type with vent feature

	Flow		Pressure		Model
	l/min	USgpm	bar	psi	
	190	50	10-210	145-3000	*A04H3H
	190	50	10-420	145-6000	*A04H3P
	400	106	10-210	145-3000	*A06H3H
	400	106	10-420	145-6000	*A06H3P

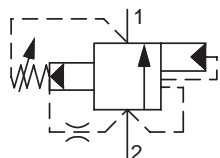
Pilot operated, solenoid actuated, ventable relief

	Flow		Pressure		Coil series type		Model
	l/min	USgpm	bar	psi			
	90	24	220	3200	CA	S	AS04G2

32 * Also available, non-adjustable version please see data sheet for ordering details.

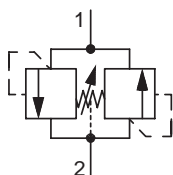
RELIEF VALVES

Pilot operated, spool type, kickdown, unloading



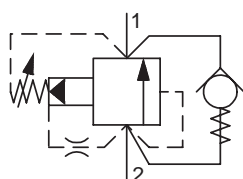
Flow		Pressure		Model
l/min	USgpm	bar	psi	
160	42	10-210	145-3000	*A04K2H
160	42	10-420	145-6000	*A04K2P

Crossover combined in one cartridge



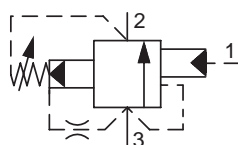
Flow		Pressure		Model
l/min	USgpm	bar	psi	
120	32	5-210	72-3000	*A04J2H
120	32	10-350	145-5000	*A04J2M
160	42	150-350	2200-5000	A6A125
160	42	25-200	360-2900	A6B125

Pilot operated, poppet type with reverse free flow feature



Flow		Pressure		Model
l/min	USgpm	bar	psi	
120	32	10-210	145-3000	*A0VN2H
120	32	10-420	145-6000	*A0VN2P
240	63	10-210	145-3000	*A06N2H
240	63	10-420	145-6000	*A06N2P

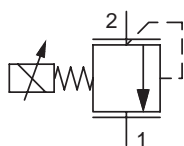
External pilot operated, unloading



Flow		Pressure		Model
l/min	USgpm	bar	psi	
200	53	150-350	2175-5000	M1A125
200	53	30-200	435-2900	M1B125

RELIEF VALVES - Proportional Control

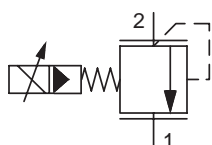
Decreasing pressure with increasing current



Flow		Pressure		Coil		Model
l/min	USgpm	bar	psi	series	type	
5.3	1.4	70	1000	CA	P	AP01B2YR 07A
3.4	0.9	140	2000	CA	P	AP01B2YR 14A
3.0	0.8	235	3400	CA	P	AP01B2YR 21A

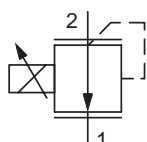
RELIEF VALVES - Proportional Control

Decreasing pressure with increasing current



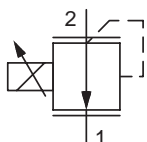
Flow l/min USgpm		Pressure bar psi		Coil series type		Model
95	25	103	1500	CC	P	AP04G2YR 10C
95	25	210	3000	CC	P	AP04G2YR 21C
95	25	350	5000	CC	P	AP04G2YR 35C

Increasing pressure with increasing current



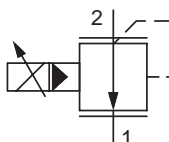
Flow l/min USgpm		Pressure bar psi		Coil series type		Model
5.3	1.4	70	1000	CC	P	AP01B2YP 07C
3.4	0.9	140	2000	CC	P	AP01B2YP 14C
3.0	0.8	210	3000	CC	P	AP01B2YP 21C
1.3	0.35	350	5000	CC	P	AP01B2YP 35C

Increasing pressure with increasing current



Flow l/min USgpm		Pressure bar psi		Coil series type		Model
5.3	1.4	70	1000	CA	S	AP02A2 07
5.3	1.4	100	1400	CA	P	
3.0	0.8	210	3000	CA	S	AP02A2 29
3.0	0.8	276	4000	CA	P	
2.3	0.6	350	5000	CA	P	AP02A2 35

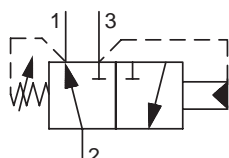
Increasing pressure with increasing current



Flow l/min USgpm		Pressure bar psi		Coil series type		Model
95	25	103	1500	CC	P	AP04G2YP 10C
95	25	210	3000	CC	P	AP04G2YP 21C
95	25	350	5000	CC	P	AP04G2YP 35C

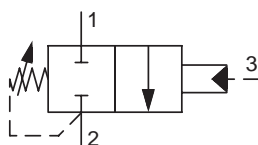
SEQUENCE VALVES

Direct acting, with internal pilot and drain



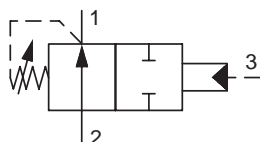
Flow		Pressure		Model
l/min	USgpm	bar	psi	
30	8	2-148	30-2150	*B02E3F
50	13	2-80	30-1160	*B04E3E
50	13	2-166	30-2400	*B04E3G
50	13	40-240	580-3480	*B04E3J

Direct acting, normally closed, with external pilot and internal drain



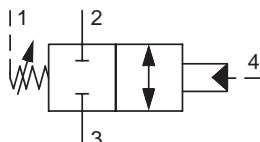
Flow		Pressure		Model
l/min	USgpm	bar	psi	
34	9	2-80	30-1160	*B04F3E
34	9	2-166	30-2400	*B04F3G
34	9	40-240	580-3480	*B04F3J

Direct acting, normally open with external pilot and internal drain



Flow		Pressure		Model
l/min	USgpm	bar	psi	
40	10.6	2-80	30-1160	*B04G3E
40	10.6	2-166	30-2400	*B04G3G
40	10.6	40-240	580-3480	*B04G3J

Direct acting, normally closed with external pilot and drain

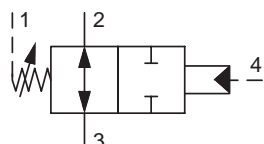


Flow		Pressure		Model
l/min	USgpm	bar	psi	
47	12	2-80	30-1160	*B04H3E
47	12	2-166	30-2400	*B04H3G
47	12	40-240	580-3480	*B04H3J

* Also available, non-adjustable version please see data sheet for ordering details.

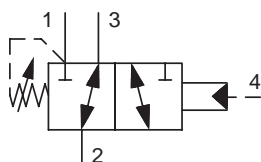
SEQUENCE VALVES

Direct acting, normally open with external pilot and drain



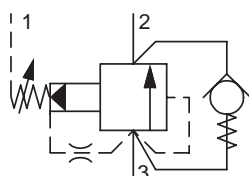
Flow		Pressure		Model
l/min	USgpm	bar	psi	
47	12	2-80	30-1160	*B04J4E
47	12	2-166	30-2400	*B04J4G
47	12	40-240	580-3480	*B04J4J

Direct acting, 3 way, with internal drain and external pilot



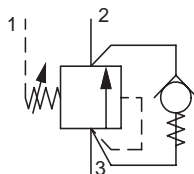
Flow		Pressure		Model
l/min	USgpm	bar	psi	
42	11	2-80	30-1160	*B04K4E
42	11	2-166	30-2400	*B04K4G
42	11	40-240	580-3480	*B04K4J

Pilot operated, poppet type with reverse free flow feature



Flow		Pressure		Model
l/min	USgpm	bar	psi	
120	32	10-210	145-3000	*B04D3H
120	32	10-420	145-6000	*B04D3P

Direct acting, poppet type with reverse free flow feature

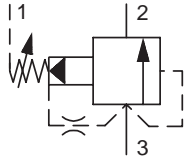


Flow		Pressure		Model
l/min	USgpm	bar	psi	
80	21	5-80	73-1160	*B04P3E
80	21	5-166	73-2400	*B04P3G

36 * Also available, non-adjustable version please see data sheet for ordering details.

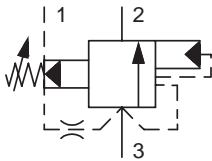
SEQUENCE VALVES

Pilot operated, spool type



Flow		Pressure		Model
l/min	USgpm	bar	psi	
125	33	10-210	145-3000	*B04B3H
125	33	10-420	145-6000	*B04B3P
175	46	10-210	145-3000	*B04BS3H
175	46	10-420	145-6000	*B04BS3P
400	106	10-210	145-3000	*B06B3H
400	106	10-420	145-6000	*B06B3P

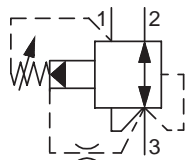
Pilot operated, spool type, kickdown, unloading



Flow		Pressure		Model
l/min	USgpm	bar	psi	
175	46	10-210	145-3000	*B04C3H
175	46	10-420	145-6000	*B04C3P

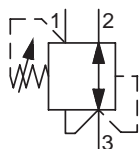
PRESSURE REGULATING VALVES

Pilot operated, spool type with relieving feature



Flow		Pressure		Model
l/min	USgpm	bar	psi	
120	32	10-210	145-3000	*C04B3H
120	32	10-350	145-5000	*C04B3M
200	53	10-210	145-3000	*C06B3H
200	53	10-350	145-5000	*C06B3M

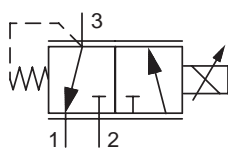
Direct acting, spool type with relieving feature



Flow		Pressure		Model
l/min	USgpm	bar	psi	
20	5	5-40	73-580	*C02A3C
20	5	25-75	353-1088	*C02A3E
20	5	50-150	725-2175	*C02A3G
40	10	20-100	290-1450	C3A025
40	10	3-40	45-580	C3B025

PRESSURE REGULATORS - Proportional Control

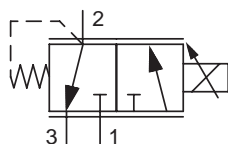
Bottom cylinder port, 2 position, 3 way



Flow		Pressure		Coil		Model
l/min	USgpm	bar	psi	series	type	
		Regulated				GP01 30
1.9	0.5	17	250	CC	S	
1.9	0.5	22	320	CC	P	

Max input pressure 210 bar 3000 psi.

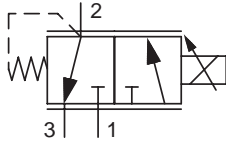
Side cylinder port, 2 position, 3 way



Max input pressure 210 bar 3000 psi.

Flow		Pressure		Coil		Model
l/min	USgpm	bar	psi	series	type	
		Regulated				GTP0234 02
19	5	8	120	CC	S	
19	5	10	150	CC	P	GTP0234 03
		17	240	CC	S	
19	5	21	300	CC	P	GTP0234 05
		33	480	CC	S	
19	5	41	600	CC	P	GTP0234 09
		50	720	CC	S	
19	5	62	900	CC	P	GTP0234 18
		100	1440	CC	S	
19	5	124	1800	CC	P	

38 * Also available, non-adjustable version please see data sheet for ordering details.

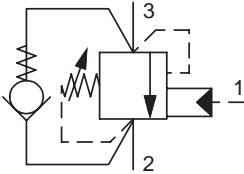
PRESSURE REGULATORS - Proportional Control
Side cylinder port, 2 position, 3 way


Flow l/min	US gpm	Pressure		Coil		Model
		bar	psi	series	type	
30	8	Regulated		CA	S	GTP0434 02
		12	170	CA	P	
30	8	19	280	CA	S	GTP0434 03
		24	350	CA	P	
30	8	28	400	CA	S	GTP0434 05
		35	500	CA	P	
30	8	52	750	CA	S	GTP0434 09
		62	900	CA	P	

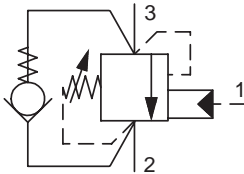
Max input pressure 210 bar 3000 psi.

LOAD CONTROL VALVES

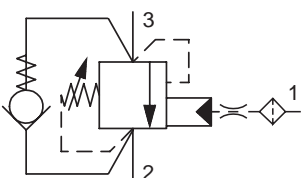
Standard version

	Flow		Pressure		Pilot Ratio	Model
	l/min	USgpm	bar	psi		
	20	5.3	50-420	725-6000	4.5:1	E2B020
	14	3.7	50-420	725-6000	8:1	E2A020
	60	15.9	50-350	725-5000	1.75:1	E2H040
	60	15.9	50-350	725-5000	3:1	E2B040
	60	15.9	50-350	725-5000	8:1	E2A040
	120	32	50-350	725-5000	1.75:1	E2H060
	120	32	50-350	725-5000	3:1	E2B060
	120	32	50-350	725-5000	5:1	E2J060
	120	32	50-350	725-5000	8:1	E2A060
	200	53	50-350	725-5000	3:1	E2E125
	200	53	50-350	725-5000	8:1	E2A125

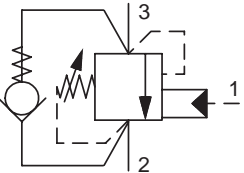
Damped, for inherently unstable applications

	Flow		Pressure		Pilot Ratio	Model
	l/min	USgpm	bar	psi		
	120	32	50-350	725-5000	3:1	E2B060*498

Damped, for inherently unstable applications

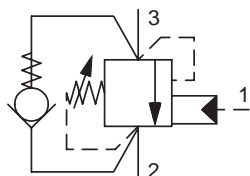
	Flow		Pressure		Pilot Ratio	Model
	l/min	USgpm	bar	psi		
	120	32	50-350	725-5000	1.75:1	E2H060*548

Standard version, fits CAVT11A cavity

	Flow		Pressure		Pilot Ratio	Model
	l/min	USgpm	bar	psi		
	60	16	40-350	580-5000	1.5:1	E2E1
	60	16	40-350	580-5000	2.3:1	E2G1
	60	16	40-350	580-5000	3:1	E2K1
	60	16	40-350	580-5000	4.5:1	E2M1

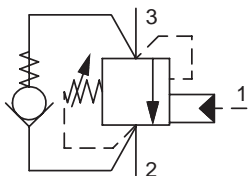
LOAD CONTROL VALVES

Semi-restrictive ports 3 to 2, fits CAVT11A cavity



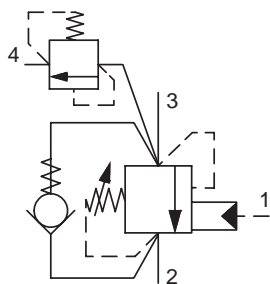
Flow		Pressure		Pilot	Model
l/min	USgpm	bar	psi	Ratio	
60	16	40-350	580-5000	1.5:1	E2E1S
60	16	40-350	580-5000	2.3:1	E2G1S
60	16	40-350	580-5000	3:1	E2K1S
60	16	40-350	580-5000	4.5:	E2M1S

Restrictive ports 3 to 2, fits CAVT11A cavity



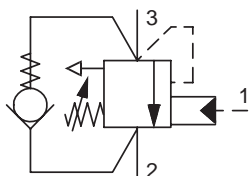
Flow		Pressure		Pilot	Model
l/min	USgpm	bar	psi	Ratio	
60	16	90-350	1300-5000	3:1	E2K1R
60	16	90-350	1300-5000	4.5:1	E2M1R

Standard version with surge relief



Flow		Pressure		Pilot	Model
l/min	USgpm	bar	psi	Ratio	
120	32	50-350	725-5000	3:1	E3B060
120	32	50-350	725-5000	8:1	E3A060

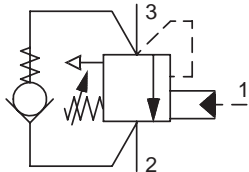
3 port, independent of backpressure, vented to atmosphere



Flow		Pressure		Pilot	Model
l/min	USgpm	bar	psi	Ratio	
20	5.3	50-420	725-6000	4.5:1	E6B020
20	5.3	100-350	1450-5000	15:1	E6K020
60	16	50-350	725-5000	3:1	E6B040
120	32	50-350	725-5000	3:1	E6B060
120	32	50-350	725-5000	8:1	E6A060
180	48	50-350	725-5000	3:1	E6B060ZN-409

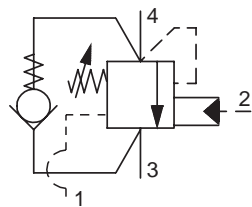
LOAD CONTROL VALVES

3 port, independent of backpressure, vented to atmosphere, fits CAVT11A cavity



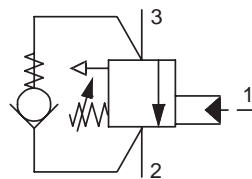
Flow		Pressure		Pilot	Model
l/min	USgpm	bar	psi	Ratio	
60	16	40-350	580-5000	1:1	E6C1
60	16	40-350	580-5000	3:1	E6K1
60	16	40-350	580-5000	5:1	E6P1

4 port, independent of backpressure, vented to drain line, fits CAVT21A cavity

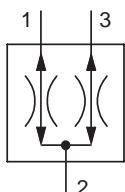


Flow		Pressure		Pilot	Model
l/min	USgpm	bar	psi	Ratio	
60	16	40-350	580-5000	1:1	E9C1
60	16	40-350	580-5000	3:1	E9K1
60	16	40-350	580-5000	5:1	E9P1

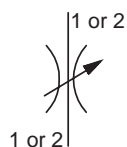
3 port, non-relieving, independent of backpressure, vented to atmosphere



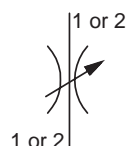
Flow		Pressure		Pilot	Model
l/min	USgpm	bar	psi	Ratio	
120	32	6-16	87-232	n/a	P6N060

FLOW DIVIDER / COMBINER VALVES
Spool type


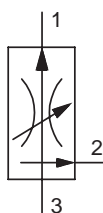
Flow		Pressure		Model
l/min	USgpm	bar	psi	
60	16	420	6000	L04A3
180	47	420	6000	L06A3
320	84.7	350	5000	L1A300

FLOW REGULATOR / RESTRICTOR VALVES
Needle type, flow restrictor


Flow		Pressure		Model
l/min	USgpm	bar	psi	
80	21	420	6000	*J02A2
160	42	420	6000	*J04A2
365	96	420	6000	*J06A2

Rotary spool type, flow restrictor


Flow		Pressure		Model
l/min	USgpm	bar	psi	
270	66	350	5000	*J06M2


Priority style, pressure compensated with bypass


Flow		Pressure		Model
l/min	USgpm	bar	psi	
1-15	0.3-4	420	6000	*J02D3
2-45	0.5-11.9 (Regulated)	420	6000	*J04D3


* Also available, non-adjustable version please see data sheet for ordering details.

FLOW REGULATOR / RESTRICTOR VALVES

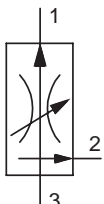
Restrictive style, pressure compensated

	Flow		Pressure		Model
	l/min	USgpm	bar	psi	
	1-20	0.3-5.3	420	6000	*J02E2
	1-40	0.3-10.6	420	6000	*J04E2

Restrictive style, variable orifice, pressure compensated

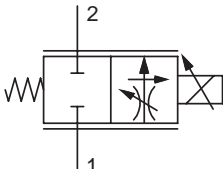
	Flow		Pressure		Model
	l/min	USgpm	bar	psi	
	1-40	0.3-10.6	420	6000	J04C2

Priority style, pressure compensated with bypass

	Flow		Pressure		Model
	l/min	USgpm	bar	psi	
	10-90	2.6-24 (regulated)	350	5000	J1A125

FLOW REGULATOR VALVES - Proportional Control

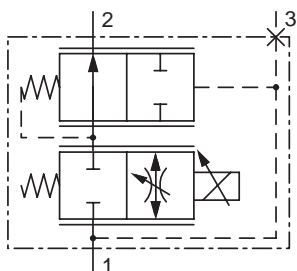
2 way, partially pressure compensated, normally closed

	Flow		Pressure		Coil		Model
	l/min	USgpm	bar	psi	series	type	
	13.3	3.5	210	3000	CC	S	HP02C 21
	22.8	6	210	3000	CC	P	
	30	8	210	3000	CA	S	HP04C 21
	36	9.5	210	3000	CA	P	

44 * Also available, non-adjustable version please see data sheet for ordering details.

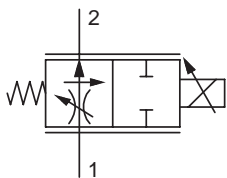
FLOW REGULATOR VALVES - Proportional Control

2 way, pressure compensated, normally closed



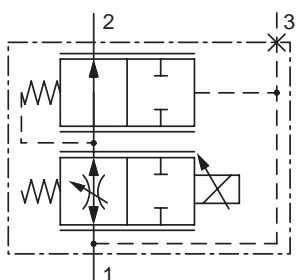
Flow l/minUSgpm	Pressure		Coil		Model
	bar	psi	series	type	
7.5	2	210	3000	CC S	JP02C 20
15	4	210	3000	CC S	JP02C 21
23	6	210	3000	CC P	JP02C 21
30	8	210	3000	CA S	JP04C 21
36	9.5	210	3000	CA P	JP04C 21

2 way, partially pressure compensated, normally open



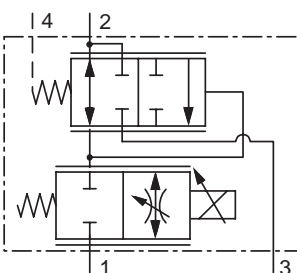
Flow l/minUSgpm	Pressure		Coil		Model
	bar	psi	series	type	
19	5	210	3000	CC P	HP02P 21
30	8	210	3000	CA P	HP04P 21

2 way, pressure compensated, normally open



Flow l/minUSgpm	Pressure		Coil		Model
	bar	psi	series	type	
9.5	2.5	210	3000	CC S	JP02P 20
19	5	210	3000	CC P	JP02P 21
36	9.5	210	3000	CA P	JP04P 21

3 way pressure compensated, priority style



Flow l/minUSgpm	Pressure		Coil		Model
	bar	psi	series	type	
Regulated					
26	7	210	3000	CA S	JP04C 31
30	8	210	3000	CA P	JP04C 31

Max input flow 60l/min 16USgpm.