

PDE2569TCUK

Directional control valves

Viking Xtreme

Working medium, air quality

Working medium: Dry, filtered compressed air to ISO 8573-1 class 3.4.3.

Recommended air quality for valves

For best possible service life and trouble free operation, ISO 8573-1 quality class 3.4.3 should be used. This means 5µm filter (standard filter) dew point +3°C for indoor operation (a lower dew point should be selected for outdoor operation) and oil concentration 1.0 mg oil/m³, which is what a standard compressor with a standard filter gives.

ISO 8573-1 quality classes

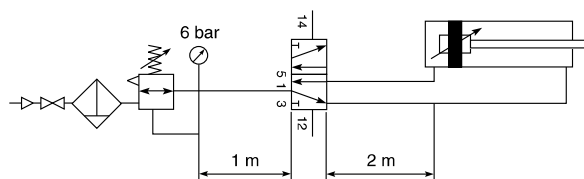
Quality class	Pollution		Water max. press. dew point (°C)	Oil max. concentration (mg/m ³)
	particle size (µm)	max. concentration (mg/m ³)		
1	0,1	0,1	-70	0,01
2	1	1	-40	0,1
3	5	5	-20	1,0
4	15	8	+3	5,0
5	40	10	+7	25
6	-	-	+10	-

Typical cylinders speeds which can be achieved with Viking valves and different tube sizes.

In the chart below you can find the suitable valves, tubes etc. for each cylinder size. If you have a tube length over 2 m, choose one tube size larger than in the chart.

Following data is valid:

Supply pressure : min 7,0 bar
 Regulator pressure setting : 6,0 bar
 Pipe length between air treatment unit and valve : max 1 m
 Pipe length between valve and cylinder : max 2 m



Cylinder bore	<20	20-32	40-50	63	80	100	125	160	200
Cylinder port	M5	G1/8	G1/4	G3/8	G3/8	G1/2	G1/2	G3/4	G3/4
Tubing Ext/Int	4/2.7	6/4	8/6	10/8	10/8	12/9	14/11	18/15	20/18
			6/4	8/6	12/9	14/11			
P2LAX	G1/8	G1/8	G1/8	G1/8	G1/8				
P2LBX	G1/4	G1/4	G1/4	G1/4	G1/4	G1/4			
P2LCX			G3/8	G3/8	G3/8	G3/8	G3/8		
P2LDX				G1/2	G1/2	G1/2	G1/2	G1/2	G1/2

Cylinder speed < 0,5 m/s
 Cylinder speed < 1 m/s
 Oversized
 Cylinder speed > 1 m/s

Material specification

P2LAX

Valve

Valve body	Anodised aluminium
End covers	Anodised aluminium
Lever housing	Acetal plastic
Spool	Aluminium + nitrile rubber
Piston	Acetal plastic/ Anodised aluminium
End cover sealings	Nitrile rubber
End cover screws	Stainless steel
Springs	Dacromet® - processed steel, Stainless steel
Lever	Reinforced polyamid plastic
Panel mounting nut	Polycarbonate plastic
Gaiter	Chloroprene rubber
Mounting screws for solenoid	Stainless steel

Accessories

Manifold bar	Anodised aluminium
Pressure bar	Anodised aluminium
Multiple manifolds	Anodised aluminium
End and intermediate blocks	Anodised aluminium

P2LCX

Valve

Valve body	Anodised aluminium
End covers	Anodised aluminium
Spool	Aluminium + nitrile rubber
Piston	Acetal plastic/ Anodised aluminium
End cover sealings	Nitrile rubber
End cover screws	Stainless steel
Springs	Dacromet® - processed steel, Stainless steel
Lever	Steel Zinc Plated
Gaiter	Chloroprene rubber
Mounting screws for solenoid	Stainless steel

P2LBX

Valve

Valve body	Anodised aluminium
End covers	Anodised aluminium
Lever housing	Anodised aluminium
Spool	Aluminium + nitrile rubber
Piston	Acetal plastic/ Anodised aluminium
End cover sealings	Nitrile rubber
End cover screws	Stainless steel
Springs	Dacromet® - processed steel, Stainless steel
Lever	Steel Zinc Plated
Gaiter	Chloroprene rubber
Mounting screws for solenoid	Stainless steel
Panel Washer	Nitrile
Twist Bush	Acetal
Helix Bush	Brass
Pin	Plated Steel
Twist Housing	Anodised Aluminium
Twist Knob	Polyamide 6
Panel mounting ring	Acetal
Lever Housings	Anodised Aluminium
Lever selector	Zinc Diecast

Accessories

Manifold bar	Anodised aluminium
Pressure bar	Anodised aluminium

P2LDX

Valve

Valve body	Anodised aluminium
End covers	Anodised aluminium
Spool	Aluminium + nitrile rubber
Piston	Acetal plastic/ Anodised aluminium
End cover sealings	Nitrile rubber
End cover screws	Stainless steel
Springs	Dacromet® - processed steel, Stainless steel
Lever	Steel Zinc Plated
Gaiter	Chloroprene rubber
Mounting screws for solenoid	Stainless steel

PDE2569TCUK

Directional control valves

Viking Xtreme

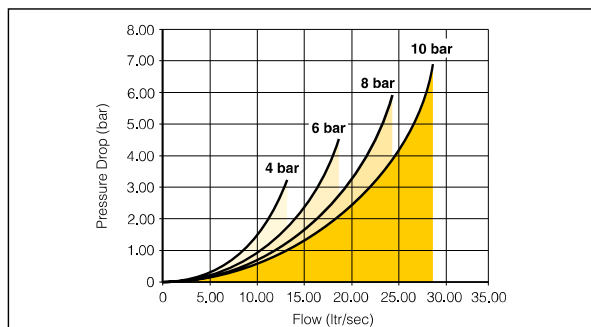
Flow characteristics

Flow capacities in accordance with ISO6358

All pressures = effective pressure

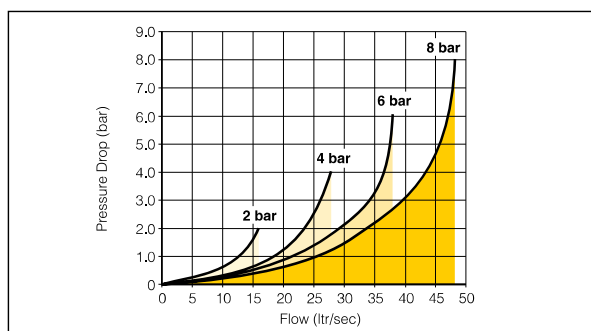
The curves in the diagram below are typical only

Technical Data P2LAX



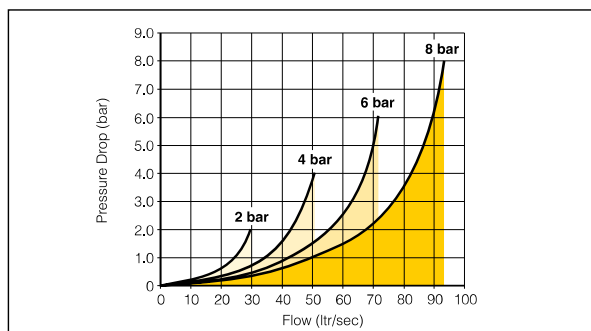
Port size	G1/8
Max operating pressure.	16 bar
Working temperature.	
Air pilot lever solenoid.	-40°C to + 60°C
Air pilot solenoid.	-10°C to + 50°C
Standard and food version.	-40°C to + 60°C
Mobile version.	-40°C to + 60°C
Flow (acc. to ISO 6358)	$c = 3,0 \text{ NI/s} \times \text{bar}$ $b = 0,2$ $Q_n = 11,0 \text{ l/s}$ $Q_{max} = 19,0 \text{ l/s}$ $C_v = 0,65$

Technical Data P2LBX



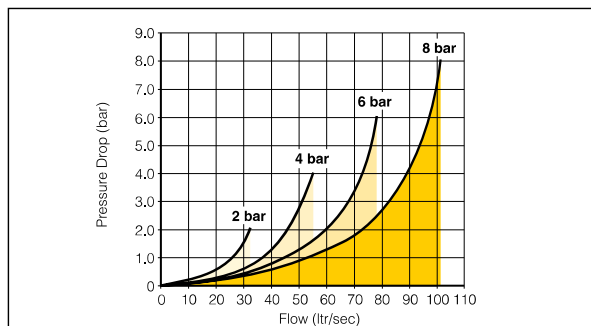
Port size	G1/4
Max operating pressure.	16 bar
Working temperature.	
Air pilot lever solenoid.	-40°C to + 60°C
Air pilot solenoid.	-10°C to + 50°C
Standard and food version.	-40°C to + 60°C
Mobile version.	-40°C to + 60°C
Flow (acc. to ISO 6358)	$c = 5,4 \text{ NI/s} \times \text{bar}$ $b = 0,2$ $Q_n = 21,5 \text{ l/s}$ $Q_{max} = 38,0 \text{ l/s}$ $C_v = 1,33$

Technical Data P2LCX



Port size	G3/8
Max operating pressure.	12 bar
Working temperature.	
Air pilot lever solenoid.	-40°C to + 60°C
Air pilot solenoid.	-10°C to + 50°C
Standard and food version.	-40°C to + 60°C
Mobile version.	-40°C to + 60°C
Flow (acc. to ISO 6358)	$c = 10,3 \text{ NI/s} \times \text{bar}$ $b = 0,22$ $Q_n = 41,0 \text{ l/s}$ $Q_{max} = 72,0 \text{ l/s}$ $C_v = 2,5$

Technical Data P2LDX



Port size	G1/2
Max operating pressure.	12 bar
Working temperature.	
Air pilot lever solenoid.	-40°C to + 60°C
Air pilot solenoid.	-10°C to + 50°C
Standard and food version.	-40°C to + 60°C
Mobile version.	-40°C to + 60°C
Flow (acc. to ISO 6358)	$c = 11,3 \text{ NI/s} \times \text{bar}$ $b = 0,3$ $Q_n = 44,3 \text{ l/s}$ $Q_{max} = 78 \text{ l/s}$ $C_v = 2,71$



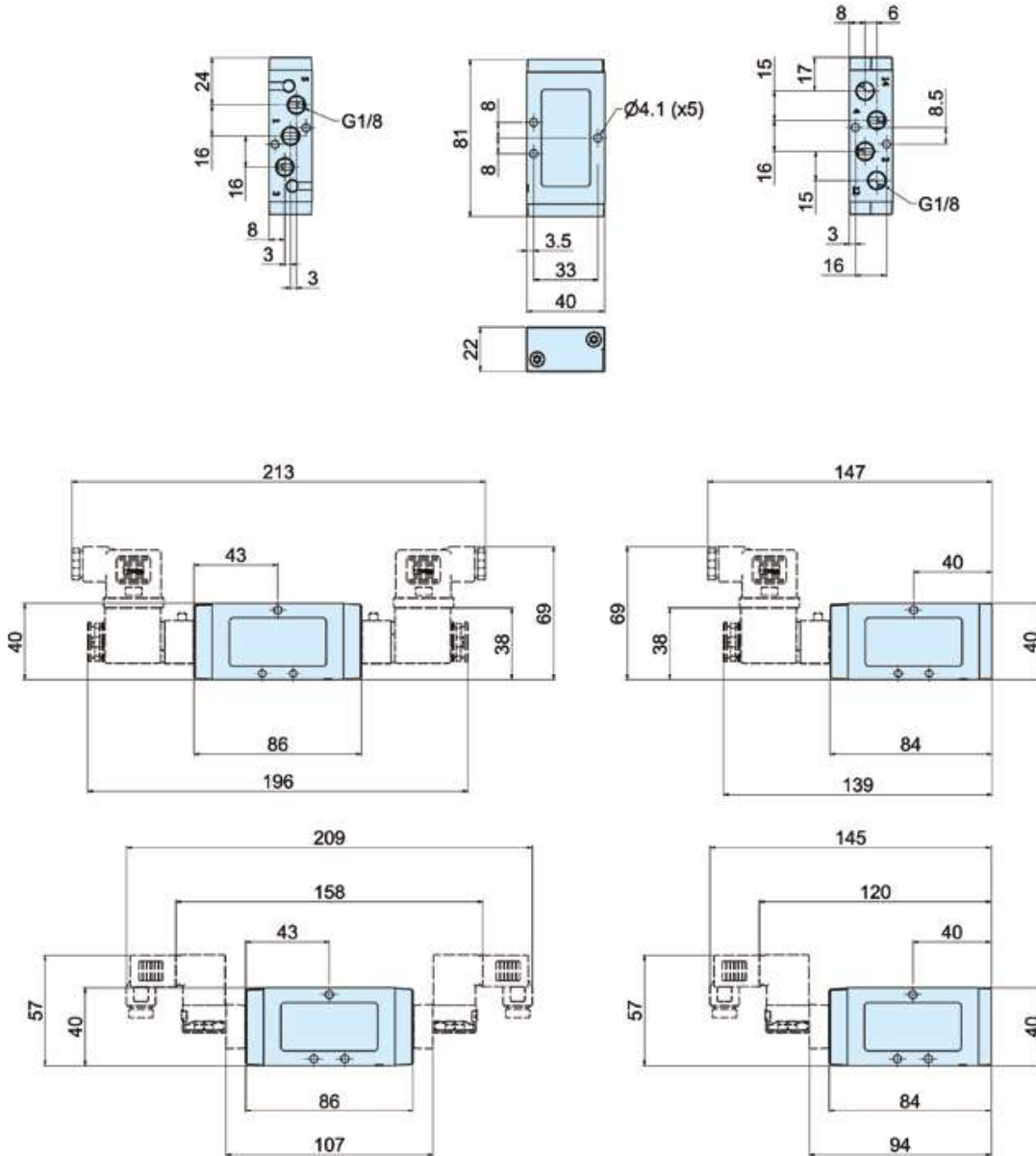
PDE2569TCUK

Directional control valves

Viking Xtreme

Dimensions

P2LAX... all
5/2 and 5/3 valves



Solenoid valves
Cable plugs must be ordered separately.
One pilot valve is required for each E in the valve order code.



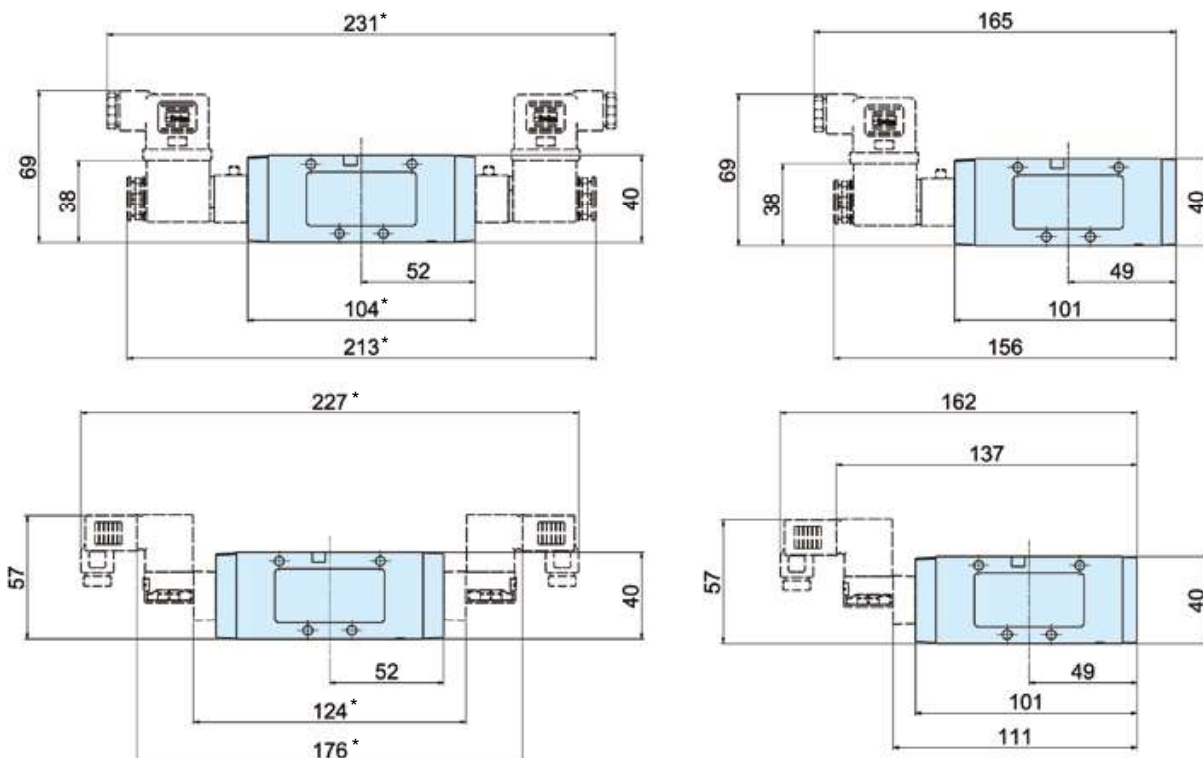
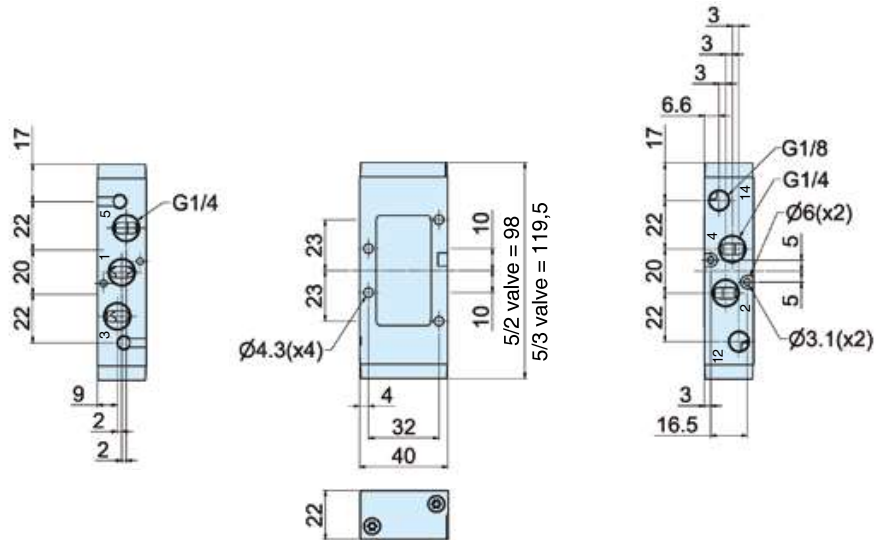
PDE2569TCUK

Directional control valves

Viking Xtreme

Dimensions

P2LBX... all
5/2 and 5/3 valves



* Note: 5/3 valves - add 21.5mm



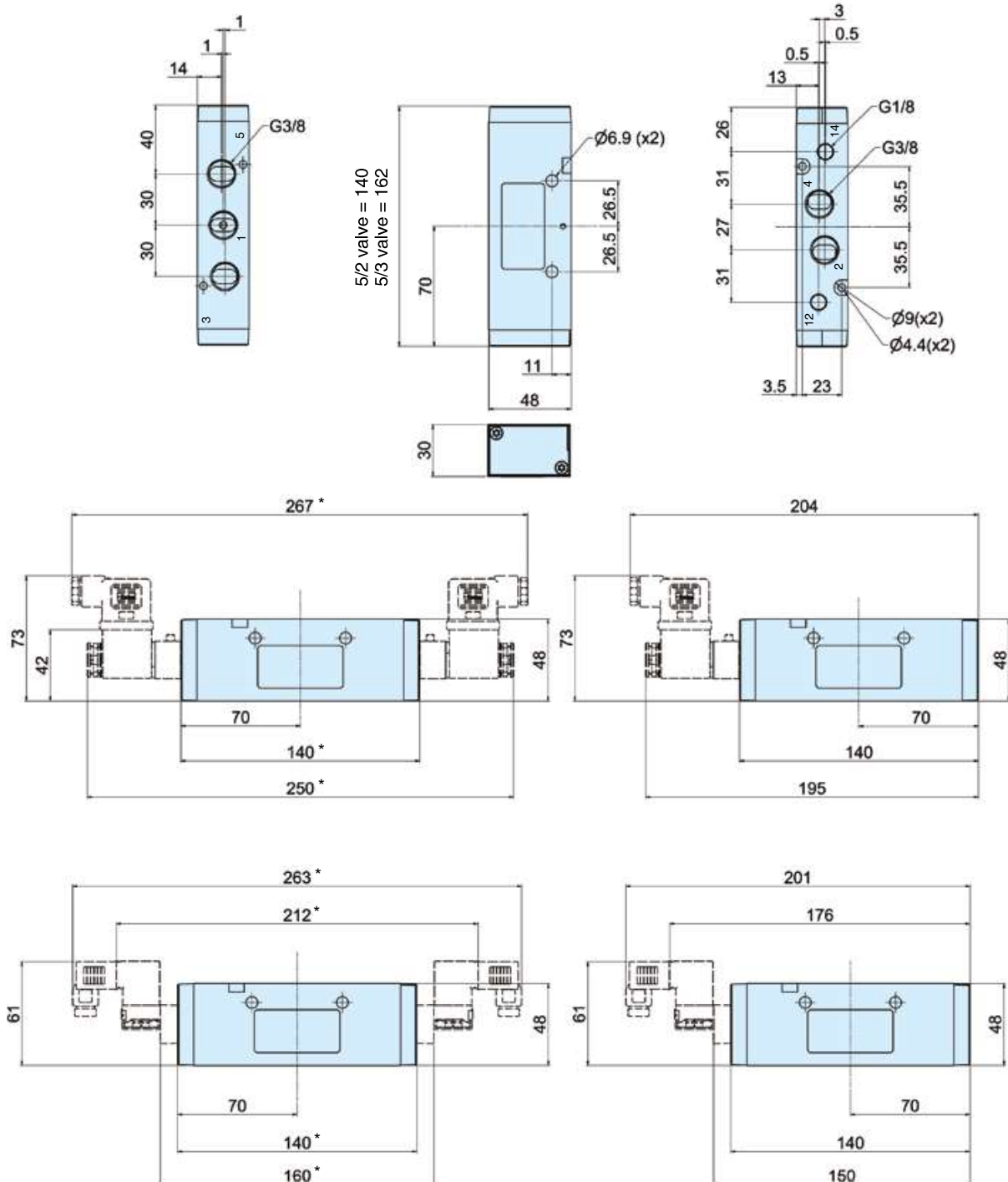
PDE2569TCUK

Directional control valves

Viking Xtreme

Dimensions

P2LCX... all
5/2 and 5/3 valves



* Note: 5/3 valves - add 22.0mm



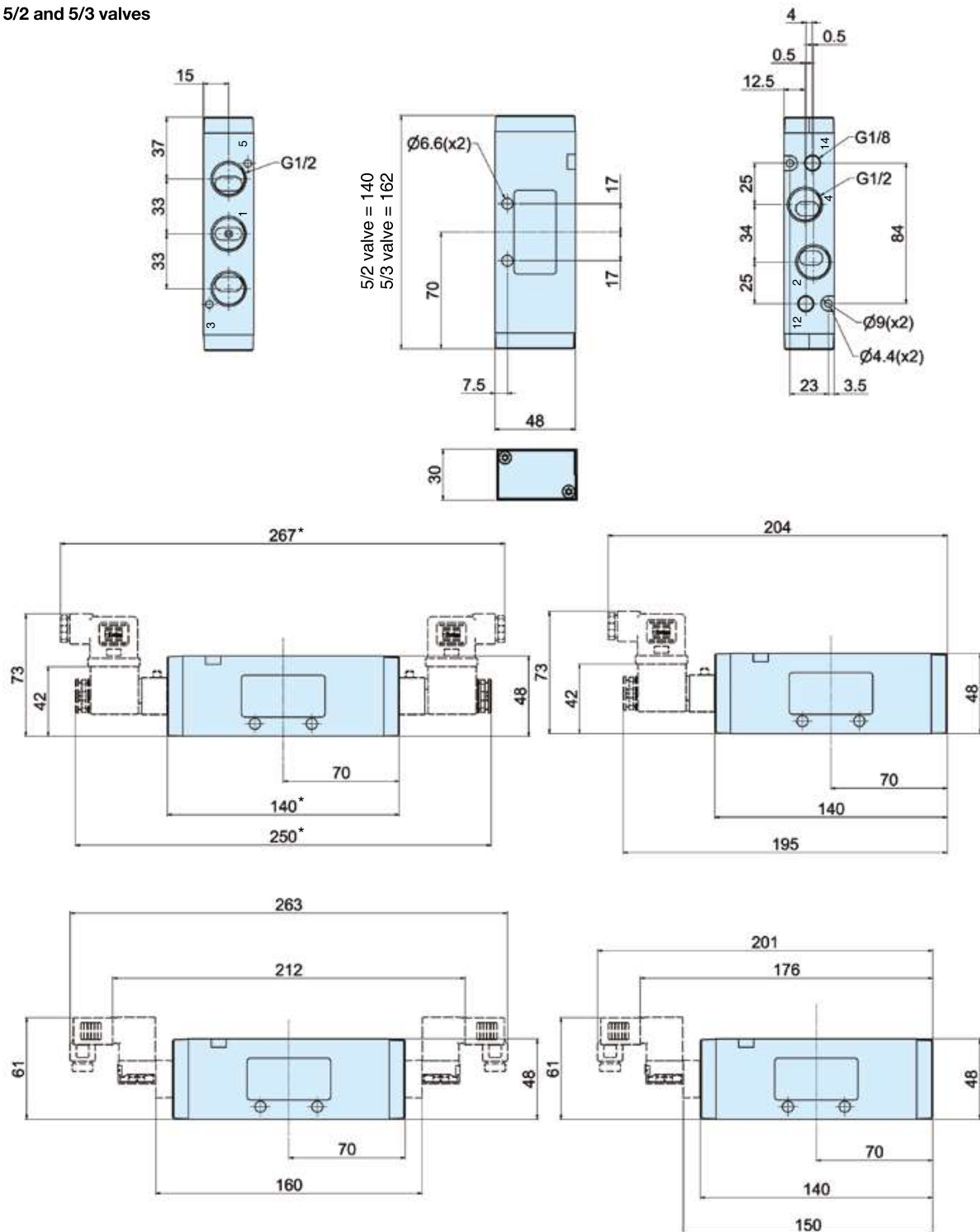
PDE2569TCUK

Directional control valves

Viking Xtreme

Dimensions

P2LDX... all
5/2 and 5/3 valves



* Note: 5/3 valves - add 22.0mm



Order chart - Viking Xtreme air pilot & manual valves - Xtreme operating pressure / temperature

P	2	L		A	X	5		1	1		P	S
----------	----------	----------	--	----------	----------	----------	--	----------	----------	--	----------	----------

	Valve family
P2L	Viking inline valve

	Size
A	1/8
B	1/4
C	3/8
D	1/2

	Version
X	Xtreme duty spool

* Xtreme duty spool suitable for max operating pressure 16 bar. (P2LAX + P2LBX) 12 bar (P2LCX + P2LDX)
Temperature range -40°C to +60°C

Valve type function		
Manual and pneumatic operated		
3		3/2 valve
5		5/2 valve
6		5/3 valve closed centre position
7		5/3 valve pressurised centre
8		5/3 valve vented centre

Shaded part numbers are standard

	Port thread
11	G 1/8
12	G 1/4
13	G 3/8
14	G 1/2
91	1/8 NPT
92	1/4 NPT
93	3/8 NPT
94	1/2 NPT
1N *	Namur G1/4
9N *	Namur 1/4 NPT

* Not available in 3/2 version

	Pilot main actuator/return
J ***	Rotary button - 2 positions
P	Air signal
S	Spring (return only)
V	Lever, 2 positions, 90° to ports
Z ***	Lever, 2 positions, in line with ports
1 **	Lever, 3 positions self centred, 90° to ports
2 **	Lever, held 3 positions, 90° to ports
5 ***	Lever, 3 positions, self centered in line with port
6 ***	Lever, 3 positions, held in position in line with port
7 ***	Rotary button - 3 positions held in position

** Not available in 3/2 version
*** Only Available with port threads G1/4 and 1/4 NPT

Order chart - Viking Xtreme Normal Operating Pressure / Temperature

P	2	L	A	X	5	1	1	E	S	N	D	D	B	4	9
----------	----------	----------	----------	----------	----------	----------	----------	----------	----------	----------	----------	----------	----------	----------	----------

Valve family	P2L Viking inline valve
---------------------	--------------------------------

Size	A 1/8	B 1/4	C 3/8	D 1/2
-------------	--------------	--------------	--------------	--------------

Version	X Xtreme duty spool
----------------	----------------------------

Port thread	11 G1/8	12 G1/4	13 G3/8	14 G1/2	91 1/8 NPT	92 1/4 NPT	93 3/8 NPT	94 1/2 NPT	1N * Namur G1/4	9N * Namur 1/4 NPT
--------------------	----------------	----------------	----------------	----------------	-------------------	-------------------	-------------------	-------------------	------------------------	---------------------------

* Namur version not available in 3/2 function

Solenoid pilot type	N 10 bar / -10°C to 50°C	L** 10 bar / -10°C to 50°C
----------------------------	---------------------------------	-----------------------------------

Solenoid exhaust	D Vented	N Captured/tapped M5	X 15mm solenoid vented
-------------------------	-----------------	-----------------------------	-------------------------------

Valve type function	Solenoid operated with internal supply to solenoid	
3 3/2 valve	5 5/2 valve	6 5/3 valve closed centre position
7 5/3 valve pressurised centre	8 5/3 valve vented centre	
Solenoid operated with external pilot supply to solenoids through ports 10 & 12 for 3/2 version and through ports 12 & 14 for 5/2 & 5/3 version		
L 3/2 valve	N 5/2 valve	P 5/3 valve closed centre position
Q 5/3 valve pressurised centre	R 5/3 valve vented centre	

Overrides	A* None	B* Flush - non locking	C Flush - locking	D¹ Extended non-locking	E* Extended - locking	X Less 15mm solenoid
------------------	----------------	-------------------------------	--------------------------	---	------------------------------	-----------------------------

* Only available with enclosure 5
¹ 22mm solenoid option

Voltage ²	AC		DC
	60Hz	50Hz	
40	12		
42	24	22	
45			12
47*			12
48*			24
49			24
53	120	110	
57	240	230	
XX	valve less solenoid/coil		

² Shaded part numbers are available from stock
Unshaded part numbers are available on request but will be subject to minimum order quantities
Otherwise order coil/solenoid and valve separately.

Pilot main actuator / Return	E Solenoid operated valve	S Spring (return only)	P Press (return only)
-------------------------------------	----------------------------------	-------------------------------	------------------------------

Solenoid enclosure / Lead length	5 15mm, 3 pin Form C/ISO15217 in line with body	B 22mm 3-pin Industrial Form B with coil	N 22mm solenoid pilot less coil	X Valve less 15mm solenoid	L** Low power 22mm solenoid (only available with 24V DC)
---	--	---	--	-----------------------------------	---

Shaded part numbers are standard

Order chart - Viking Xtreme Valves - Xtreme operating pressure / temperature

P	2	L	A	X	5	1	1	E	S	H	D	D	B	4	9																																																																																										
<table border="1" style="width: 100%; border-collapse: collapse;"> <tr><th colspan="2">Valve family</th></tr> <tr><td>P2L</td><td>Viking inline valve</td></tr> </table>			Valve family		P2L	Viking inline valve	<table border="1" style="width: 100%; border-collapse: collapse;"> <tr><th colspan="2">Port thread</th></tr> <tr><td>11</td><td>G1/8</td></tr> <tr><td>12</td><td>G1/4</td></tr> <tr><td>13</td><td>G3/8</td></tr> <tr><td>14</td><td>G1/2</td></tr> <tr><td>91</td><td>1/8 NPT</td></tr> <tr><td>92</td><td>1/4 NPT</td></tr> <tr><td>93</td><td>3/8 NPT</td></tr> <tr><td>94</td><td>1/2 NPT</td></tr> </table>			Port thread		11	G1/8	12	G1/4	13	G3/8	14	G1/2	91	1/8 NPT	92	1/4 NPT	93	3/8 NPT	94	1/2 NPT	<table border="1" style="width: 100%; border-collapse: collapse;"> <tr><th colspan="2">Solenoid pilot type</th></tr> <tr><td>H¹</td><td>16 bar / -40°C to 60°C</td></tr> </table> <p>¹ Solenoid operated 'H' version supplied with B type enclosure 16 bar solenoid</p>			Solenoid pilot type		H¹	16 bar / -40°C to 60°C	<table border="1" style="width: 100%; border-collapse: collapse;"> <tr><th colspan="2">Solenoid exhaust</th></tr> <tr><td>D</td><td>Vented</td></tr> <tr><td>N</td><td>Capture/tapped M5</td></tr> </table>			Solenoid exhaust		D	Vented	N	Capture/tapped M5	<table border="1" style="width: 100%; border-collapse: collapse;"> <tr><th colspan="2">Overrides</th></tr> <tr><td>D</td><td>Extended non-locking</td></tr> </table>			Overrides		D	Extended non-locking	<table border="1" style="width: 100%; border-collapse: collapse;"> <tr><th colspan="4">Voltage ³</th></tr> <tr> <th></th> <th colspan="2">AC</th> <th>DC</th> </tr> <tr> <th></th> <th>60Hz</th> <th>50Hz</th> <th></th> </tr> <tr><td>40</td><td>12</td><td></td><td></td></tr> <tr><td>42</td><td>24</td><td>22</td><td></td></tr> <tr><td>45</td><td></td><td></td><td>12</td></tr> <tr><td>47*</td><td></td><td></td><td>12</td></tr> <tr><td>48*</td><td></td><td></td><td>24</td></tr> <tr><td>49</td><td></td><td></td><td>24</td></tr> <tr><td>53</td><td>120</td><td>110</td><td></td></tr> <tr><td>57</td><td>240</td><td>230</td><td></td></tr> <tr><td>72</td><td></td><td></td><td>110</td></tr> <tr><td>XX</td><td colspan="3">valve less solenoid/coil</td></tr> </table> <p>³ Shaded part numbers are available from stock Unshaded part numbers are available on request but will be subject to minimum order quantities Otherwise order coil and valve separately.</p>			Voltage ³					AC		DC		60Hz	50Hz		40	12			42	24	22		45			12	47*			12	48*			24	49			24	53	120	110		57	240	230		72			110	XX	valve less solenoid/coil		
Valve family																																																																																																									
P2L	Viking inline valve																																																																																																								
Port thread																																																																																																									
11	G1/8																																																																																																								
12	G1/4																																																																																																								
13	G3/8																																																																																																								
14	G1/2																																																																																																								
91	1/8 NPT																																																																																																								
92	1/4 NPT																																																																																																								
93	3/8 NPT																																																																																																								
94	1/2 NPT																																																																																																								
Solenoid pilot type																																																																																																									
H¹	16 bar / -40°C to 60°C																																																																																																								
Solenoid exhaust																																																																																																									
D	Vented																																																																																																								
N	Capture/tapped M5																																																																																																								
Overrides																																																																																																									
D	Extended non-locking																																																																																																								
Voltage ³																																																																																																									
	AC		DC																																																																																																						
	60Hz	50Hz																																																																																																							
40	12																																																																																																								
42	24	22																																																																																																							
45			12																																																																																																						
47*			12																																																																																																						
48*			24																																																																																																						
49			24																																																																																																						
53	120	110																																																																																																							
57	240	230																																																																																																							
72			110																																																																																																						
XX	valve less solenoid/coil																																																																																																								
<table border="1" style="width: 100%; border-collapse: collapse;"> <tr><th colspan="2">Size</th></tr> <tr><td>A</td><td>1/8</td></tr> <tr><td>B</td><td>1/4</td></tr> <tr><td>C</td><td>3/8</td></tr> <tr><td>D</td><td>1/2</td></tr> </table>			Size		A	1/8	B	1/4	C	3/8	D	1/2	<table border="1" style="width: 100%; border-collapse: collapse;"> <tr><th colspan="2">Version</th></tr> <tr><td>X</td><td>Xtreme duty spool</td></tr> </table>			Version		X	Xtreme duty spool	<table border="1" style="width: 100%; border-collapse: collapse;"> <tr><th colspan="2">Valve type function</th></tr> <tr><th colspan="3">Solenoid operated with internal supply to solenoid</th></tr> <tr><td>3</td><td></td><td>3/2 valve</td></tr> <tr><td>5</td><td></td><td>5/2 valve</td></tr> <tr><td>6</td><td></td><td>5/3 valve closed centre position</td></tr> <tr><td>7</td><td></td><td>5/3 valve pressurised centre</td></tr> <tr><td>8</td><td></td><td>5/3 valve vented centre</td></tr> <tr><th colspan="3">Solenoid operated with external pilot supply to solenoids through ports 10 & 12 for 3/2 version and through ports 12 & 14 for 5/2 & 5/3 version</th></tr> <tr><td>L</td><td></td><td>3/2 valve</td></tr> <tr><td>N</td><td></td><td>5/2 valve</td></tr> <tr><td>P</td><td></td><td>5/3 valve closed centre position</td></tr> <tr><td>Q</td><td></td><td>5/3 valve pressurised centre</td></tr> <tr><td>R</td><td></td><td>5/3 valve vented centre</td></tr> </table>			Valve type function		Solenoid operated with internal supply to solenoid			3		3/2 valve	5		5/2 valve	6		5/3 valve closed centre position	7		5/3 valve pressurised centre	8		5/3 valve vented centre	Solenoid operated with external pilot supply to solenoids through ports 10 & 12 for 3/2 version and through ports 12 & 14 for 5/2 & 5/3 version			L		3/2 valve	N		5/2 valve	P		5/3 valve closed centre position	Q		5/3 valve pressurised centre	R		5/3 valve vented centre	<table border="1" style="width: 100%; border-collapse: collapse;"> <tr><th colspan="2">Pilot main actuator / Return</th></tr> <tr><td>E</td><td>Solenoid operated valve</td></tr> <tr><td>S</td><td>Spring (return only)</td></tr> <tr><td>P</td><td>Press (return only)</td></tr> </table>			Pilot main actuator / Return		E	Solenoid operated valve	S	Spring (return only)	P	Press (return only)	<table border="1" style="width: 100%; border-collapse: collapse;"> <tr><th colspan="2">Solenoid enclosure / Lead length</th></tr> <tr><td>A</td><td>22mm Solenoid pilot & 30mm coil Form A</td></tr> <tr><td>B</td><td>22mm Solenoid pilot & 22mm coil Industrial Form B</td></tr> <tr><td>N</td><td>22mm Solenoid pilot less coil</td></tr> </table>			Solenoid enclosure / Lead length		A	22mm Solenoid pilot & 30mm coil Form A	B	22mm Solenoid pilot & 22mm coil Industrial Form B	N	22mm Solenoid pilot less coil																							
Size																																																																																																									
A	1/8																																																																																																								
B	1/4																																																																																																								
C	3/8																																																																																																								
D	1/2																																																																																																								
Version																																																																																																									
X	Xtreme duty spool																																																																																																								
Valve type function																																																																																																									
Solenoid operated with internal supply to solenoid																																																																																																									
3		3/2 valve																																																																																																							
5		5/2 valve																																																																																																							
6		5/3 valve closed centre position																																																																																																							
7		5/3 valve pressurised centre																																																																																																							
8		5/3 valve vented centre																																																																																																							
Solenoid operated with external pilot supply to solenoids through ports 10 & 12 for 3/2 version and through ports 12 & 14 for 5/2 & 5/3 version																																																																																																									
L		3/2 valve																																																																																																							
N		5/2 valve																																																																																																							
P		5/3 valve closed centre position																																																																																																							
Q		5/3 valve pressurised centre																																																																																																							
R		5/3 valve vented centre																																																																																																							
Pilot main actuator / Return																																																																																																									
E	Solenoid operated valve																																																																																																								
S	Spring (return only)																																																																																																								
P	Press (return only)																																																																																																								
Solenoid enclosure / Lead length																																																																																																									
A	22mm Solenoid pilot & 30mm coil Form A																																																																																																								
B	22mm Solenoid pilot & 22mm coil Industrial Form B																																																																																																								
N	22mm Solenoid pilot less coil																																																																																																								
Shaded part numbers are standard																																																																																																									