



Moduflex FRLs

Moduflex40 P3H Series

1/8" and 1/4" ported

Moduflex60 P3K Series

3/8" and 1/2" ported

Moduflex80 P3M Series

1/2", 3/4" and 1" ported

Catalogue no. PDE2501TCUK-ca

Edition: June 2007



Table of Contents

Popular Combinations - P3H Series.....	8 - 9
Popular Combinations - P3K Series.....	10 - 11
Popular Combinations - P3M Series.....	12 - 13
Filters - P3H Series.....	14 - 15
Filters - P3K Series.....	16 - 17
Filters - P3M Series.....	18 - 19
Coalescing Filters and Adsorbers - P3H Series.....	20 - 21
Coalescing Filters and Adsorbers - P3K Series.....	22 - 23
Coalescing Filters and Adsorbers - P3M Series.....	24 - 25
Regulators - P3H Series.....	26 - 27
Manifold Regulators - P3H Series.....	28 - 29
Regulators - P3K Series.....	30 - 31
Manifold Regulators - P3K Series.....	32 - 33
Manifold Pressure Regulators.....	33
Key Lockable Regulators.....	34 - 35
Regulators - P3M Series.....	36 - 37
Lockable Tamperproof Kit.....	37
Filter / Regulators - P3H Series.....	38 - 39
Filter / Regulators - P3K Series.....	40 - 41
Filter / Regulators - P3M Series.....	42 - 43
Lubricators - P3H Series.....	44 - 45
Lubricators - P3K Series.....	46 - 47
Lubricators - P3M Series.....	48 - 49
Combined Soft Start Dump Valves - P3H Series.....	50 - 51
Remote Operated Dump Valves - P3H Series.....	52 - 53
Soft Start Dump Valves - P3H Series.....	54 - 54
Combined Soft Start Dump Valves - P3K Series.....	56 - 57
Remote Operated Dump Valves - P3K Series.....	58 - 59
Soft Start Dump Valves - P3K Series.....	60 - 61
Combined Soft Start Dump Valves - P3M Series.....	62 - 63
Remote Operated Dump Valves - P3M Series.....	64 - 65
Soft Start Dump Valves - P3M Series.....	66 - 67
Solenoid Operators - CNOMO.....	68 - 70
Manually Operated Dump Valve.....	71
Modular Ball Valve.....	72
Modular Manifold Block.....	73
Optional Port Block Kits.....	74
Rear Entry Connector Kits.....	74
Accessories.....	75 - 76
Gauges.....	77
Pressure Switch.....	78



WARNING

FAILURE OR IMPROPER SELECTION OR IMPROPER USE OF THE PRODUCTS AND/OR SYSTEMS DESCRIBED HEREIN OR RELATED ITEMS CAN CAUSE DEATH, PERSONAL INJURY AND PROPERTY DAMAGE.

This document and other information from Parker Hannifin Corporation, its subsidiaries and authorized distributors provide product and/or system options for further investigation by users having technical expertise. It is important that you analyze all aspects of your application and review the information concerning the product or system in the current product catalog. Due to the variety of operating conditions and applications for these products or systems, the user, through its own analysis and testing, is solely responsible for making the final selection of the products and systems and assuring that all performance, safety and warning requirements of the application are met. The products described herein, including without limitation, product features, specifications, designs, availability and pricing, are subject to change by Parker Hannifin Corporation and its subsidiaries at any time without notice.

SALE CONDITIONS

The items described in this document are available for sale by Parker Hannifin Corporation, its subsidiaries or its authorized distributors. Any sale contract entered into by Parker will be governed by the provisions stated in Parker's standard terms and conditions of sale (copy available upon request).



PDE2501TCUK-ca

Moduflex modular air preparation system

The Moduflex modular air preparation system is constructed out of aluminium for the added advantages of both lightweight and strength.

The unique 'Cliplok' fastener enables combinations of units to be built in a fraction of the time taken by more traditional systems.

Combinations may be assembled quickly and easily, the individual units combine face to face with no intermediate block and No increase in overall dimension.

Typical Combination Assembly



Manual, semi-automatic and fully automatic drain options are available, recessed into the base plate for extra safety & protection from damage.

PDE2501TCUK-ca

Moduflex modular air preparation system

Cliplok Mounting System

The unique 'Cliplok' allows units to be connected together, without the use of pipe connectors, saving space whilst providing constant mounting centres. The 'Cliploks' slide into the units from the front and rear and are locked in place by the overstrap.

For wall mounting 'Cliploks' with integral wall brackets are available. They are assembled and locked in exactly the same way.

Wall mounted 'Cliploks' can be left attached to the wall and the unit will slide off, once the overstrap has been lifted.



'Cliploks' locate and fix units in combination, allowing easy removal for servicing with no width penalty.

PDE2501TCUK-ca

Moduflex modular air preparation system

Moduflex Series Filter Elements

Moduflex Series standard Filter units feature 5 micron elements as standard with a 40 micron option.

Options include Coalescing units for the removal of oil and water aerosols and Adsorber units with activated carbon elements for the removal of hydrocarbon vapours.

The unique one piece body design overcomes the need for a separate bowl. Featuring an easy to use 1/8 turn base plate for filter element removal with positive latch to ensure correct and safe refitting.

The element cartridge is a snap fit, one piece cartridge assembly which is easy to remove and replace for servicing, no tools required.



Body ported as standard with a choice of BSPP, BSPT and NPT threadforms

Large sights provided as standard

Standard filter units feature 5 micron element.

Condensate bowl

Manual, semi-auto and automatic drain options are available.



ATEX approval: CE Ex II 3 GD
Safety norms: ISO 4414
EN 983

One hand operation for easy servicing, no small easily lost part to worry about.

Validated for transport applications



RAILWAY INDUSTRY
ASSOCIATION

BS EN / IEC 61373:1999, Category 1, Class B.

As you would expect from a member of the Rail Industry Association, the Moduflex60 FRL meets the test specification standards enabling the Moduflex60 FRL to be used as a validated product in a variety of rail applications.



Parker Hannifin Corporation
Pneumatic Division - Europe

PDE2501TCUK-ca

Moduflex modular air preparation system

Easy to use large diameter oil filling orifice



Simple to use combined sight/control dome, 1/4 turn to remove allows easy filling of lubricant even under pressure.

Optional Tamperproof Kit



Optional Manifold Mounted Regulators

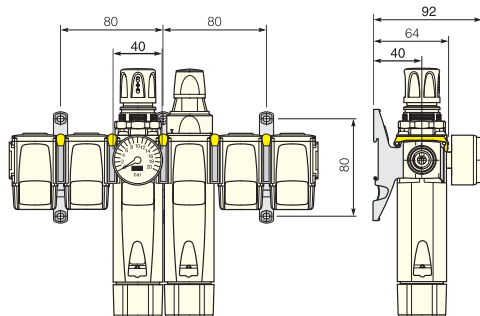
An optional version of the regulator may be Manifold Mounted for common inlet installations, providing any number of subsidiary p2 pressures.

PDE2501TCUK-ca

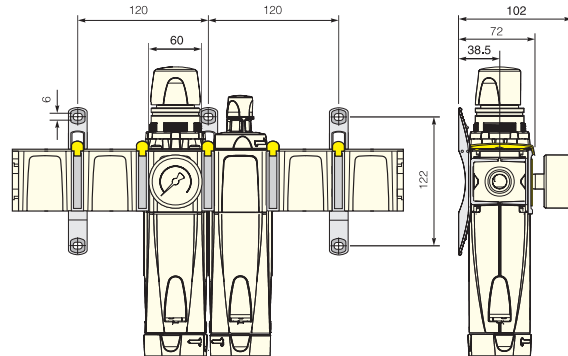
Moduflex modular air preparation system

Recommended Wall Mounting Configurations

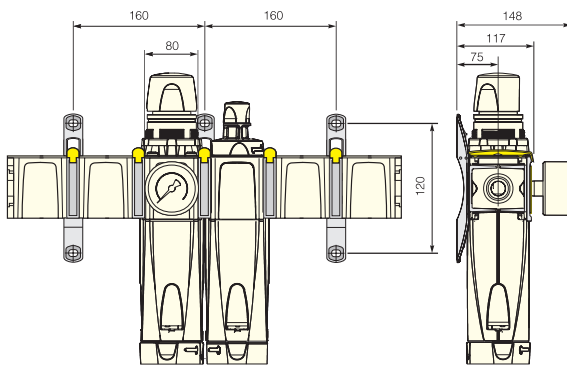
Moduflex 40 P3H Series



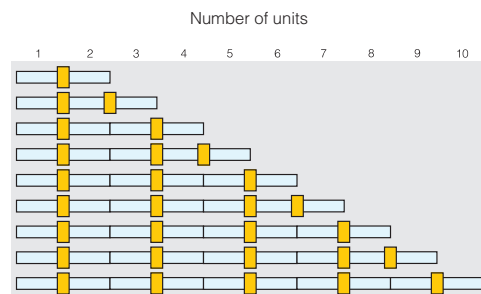
Moduflex 60 P3K Series



Moduflex 80 P3M Series



Position of Wall Mounting Bracket for Combinations



Single Mounting Bracket



Facilitates the permanent mounting of a single unit without the use of the 'Cliplok' system. The single piece steel bracket may be fixed to the wall or machine and a single Moduflex unit simply and securely pushed into place.

This is a permanent mounting option, care must be exercised before the unit is assembled.

Suitable for individual Filter and Lubricator mounting.

For all other mounting arrangements the 'Cliplok' system should be used.

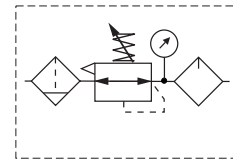
Series	Description	Weight g	Order Code
P3H	Single unit mounting bracket	29	P3HKA00MW
P3K	Single unit mounting bracket	44	P3KKA00MW
P3M	Single unit mounting bracket	130	P3MKA00MW

PDE2501TCUK-ca

Moduflex modular air preparation system

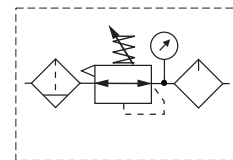
P3H Series

Popular Combinations



Filter + Regulator + Lubricator Combinations
5 micron element, 8 bar Regulator + Gauge and Wall Mounting Brackets

Port size	Manual Drain	Weight (g)	Semi-Auto Drain	Weight (g)
G ¹ / ₄	P3HCB12SEMNLMB	815	P3HCB12SESNLMB	820



Filter/Regulator + Lubricator Combinations
5 micron element, 8 bar Regulator + Gauge and Wall Mounting Brackets

Port size	Manual Drain	Weight (g)	Semi-Auto Drain	Weight (g)
G ¹ / ₄	P3HCA12SEMNLMB	628	P3HCA12SESNLMB	632

Options:

P3H	C				SE		N		LMB
Filter/Regulator + Lub	A	BSPG (G)	1	1/8	1	Manual Drain	M	0 - 2 bar with gauge	Z
Filter + Regulator + Lub	B	NPT	9	1/4	2	Semi Auto Drain	S	0 - 4 bar with gauge	M
								0 - 8 bar with gauge	G
								0 - 16 bar with gauge	J

Note: Lubricator is always fitted with manual drain

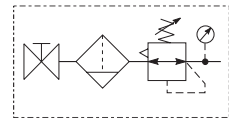


PDE2501TCUK-ca

Moduflex modular air preparation system

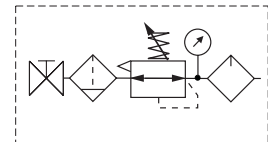
P3H Series

Popular Combinations



Ball Valve + Filter/Regulator Combinations
5 micron element, 8 bar Regulator + Gauge and Wall Mounting Brackets

Port size	Manual Drain	Weight (g)	Semi-Auto Drain	Weight (g)
G ¹ / ₄	P3HAN12SEMNGB	533	P3HAN12SESNGB	538



Ball Valve + Filter/Regulator + Lubricator Combinations
5 micron element, 8 bar Regulator + Gauge and Wall Mounting Brackets

Port size	Manual Drain	Weight (g)	Semi-Auto Drain	Weight (g)
G ¹ / ₄	P3HAA12SEMNLMB	730	P3HAA12SESNLMB	735

Options:

P3H	A			SE		N			B
Ball valve + Filter/Reg	N	BSPP (G)	1	1/8	1	0 - 2 bar with gauge	Z	Add only for options with Lubricator	LM
Ball valve + Filter/Reg + Lubricator	A	NPT	9	1/4	2	0 - 4 bar with gauge	M		
		Manual Drain				0 - 8 bar with gauge	G		
		Semi Auto Drain				0 - 16 bar with gauge	J		

Note: Lubricator is always fitted with manual drain

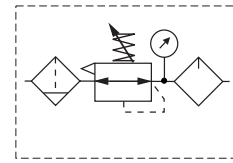


PDE2501TCUK-ca

Moduflex modular air preparation system

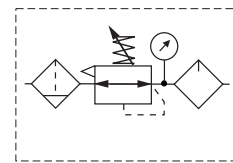
P3K Series

Popular Combinations



Filter + Regulator + Lubricator Combinations
5 micron element, 8 bar Regulator + Gauge and Wall Mounting Brackets

Port size	Manual Drain	Weight (g)	Semi-Auto Drain	Weight (g)	Auto Drain	Weight (g)
G ^{1/2}	P3KCB14SEMNLMB	2010	P3KCB14SESNGLMB	2015	P3KCB14SEANGLMB	2030



Filter/Regulator + Lubricator Combinations
5 micron element, 8 bar Regulator + Gauge and Wall Mounting Brackets

Port size	Manual Drain	Weight (g)	Semi-Auto Drain	Weight (g)	Auto Drain	Weight (g)
G ^{1/2}	P3KCA14SEMNLMB	1610	P3KCA14SESNGLMB	1615	P3KCA14SEANGLMB	1630

Options:

P3	K	C				SE		N		LMB
Filter/Regulator + Lub	A	BSPP (G)	1	3/8	3	Manual Drain	M	0 - 2 bar with gauge	Z	
Filter + Regulator + Lub	B	NPT	9	1/2	4	Semi Auto Drain	S	0 - 4 bar with gauge	M	
						Auto Drain	A	0 - 8 bar with gauge	G	
								0 - 16 bar with gauge	J	

Note: Lubricator is always fitted with manual drain

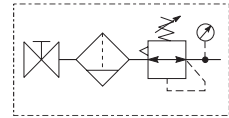


PDE2501TCUK-ca

Moduflex modular air preparation system

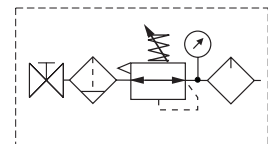
P3K Series

Popular Combinations



Ball Valve + Filter/Regulator Combinations
5 micron element, 8 bar Regulator + Gauge and Wall Mounting Brackets

Port size	Manual Drain	Weight (g)	Semi-Auto Drain	Weight (g)	Auto Drain	Weight (g)
G ^{1/2}	P3KAN14SEMNGB	1425	P3KAN14SESNGB	1430	P3KAN14SEANGB	1445



Ball Valve + Filter/Regulator + Lubricator Combinations
5 micron element, 8 bar Regulator + Gauge and Wall Mounting Brackets

Port size	Manual Drain	Weight (g)	Semi-Auto Drain	Weight (g)	Auto Drain	Weight (g)
G ^{1/2}	P3KAA14SEMNGLMB	2210	P3KAA14SEENGLMB	2215	P3KAA14SEANGLMB	2230

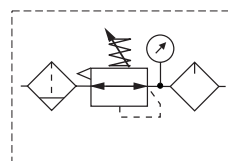
Options:

P3K	A			SE		N			B
Ball valve + Filter/Reg	N	BSPP (G)	1	3/8	3	0 - 2 bar with gauge	Z	Add only for options with Lubricator	
Ball valve + Filter/Reg + Lubricator	A	NPT	9	1/2	4	0 - 4 bar with gauge	M		
				Manual Drain	M	0 - 8 bar with gauge	G		
				Semi Auto Drain	S	0 - 16 bar with gauge	J		
				Auto Drain	A				

Note: Lubricator is always fitted with manual drain

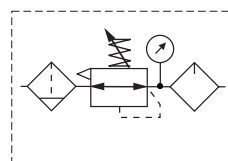


Popular Combinations



Filter + Regulator + Lubricator Combinations
5 micron element, 8 bar Regulator + Gauge and Wall Mounting Brackets

Port size	Manual Drain	Weight (g)	Semi-Auto Drain	Weight (g)	Auto Drain	Weight (g)
G ³ / ₄	P3MCB16SEMGLMB	4229	P3MCB16SESNGLMB	4219	P3MCB16SEANGLMB	4249
G1	P3MCB18SEMGLMB	4148	P3MCB18SESNGLMB	4138	P3MCB18SEANGLMB	4168



Filter/Regulator + Lubricator Combinations
5 micron element, 8 bar Regulator + Gauge and Wall Mounting Brackets

Port size	Manual Drain	Weight (g)	Semi-Auto Drain	Weight (g)	Auto Drain	Weight (g)
G ³ / ₄	P3MCA16SEMGLMB	3526	P3MCA16SESNGLMB	3516	P3MCA16SEANGLMB	3546
G1	P3MCA18SEMGLMB	3485	P3MCA18SESNGLMB	3475	P3MCA18SEANGLMB	3505

Options:

P3	M	C				SE		N		LMB
Filter/Regulator + Lub	A	BSPP (G)	1	1/2	4	Manual Drain	M	0 - 2 bar with gauge	Z	
Filter + Regulator + Lub	B	NPT	9	3/4	6	Semi Auto Drain	S	0 - 4 bar with gauge	M	
				1	8	Auto Drain	A	0 - 8 bar with gauge	G	
								0 - 16 bar with gauge	J	

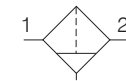
Note: Lubricator is always fitted with manual drain



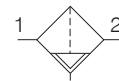
Standard Filter



Symbols



Manual drain



Semi auto drain

- Integral 1/8 or 1/4 ports (BSPP & NPT)
- High efficiency 5 micron element as standard
- Excellent water removal efficiency
- Robust but lightweight aluminium construction
- One hand operation for easy element cartridge removal
- Positive bayonet latch to ensure correct & safe fitting
- No small easily lost parts
- No tools required for servicing

Options:

P3	H	F	A						N		
				BSPP (G)	1	1/8	1	5 Micron Element Standard	E	Manual Drain	SM
				NPT	9	1/4	2	40 Micron Element Optional	G	Semi Auto Drain	SS

Port size	Description	Order Code	Flow l/s *	Max bar	Min temp °C	Max temp °C	Bowl size cm ³	Height mm	Width mm	Depth mm	Weight g
G1/8	Manual drain	P3HFA11ESMN	15	17	-20	+80	10	145	40	40	274
G1/8	Semi auto drain	P3HFA11ESSN	15	17	-20	+80	10	145	40	40	274
G1/4	Manual drain	P3HFA12ESMN	18	17	-20	+80	10	145	40	40	274
G1/4	Semi auto drain	P3HFA12ESSN	18	17	-20	+80	10	145	40	40	274

* flow with 6,3 bar inlet pressure and 0,5 pressure drop.

PDE2501TCUK-ca
Moduflex modular air preparation system

P3H Series

Technical Information

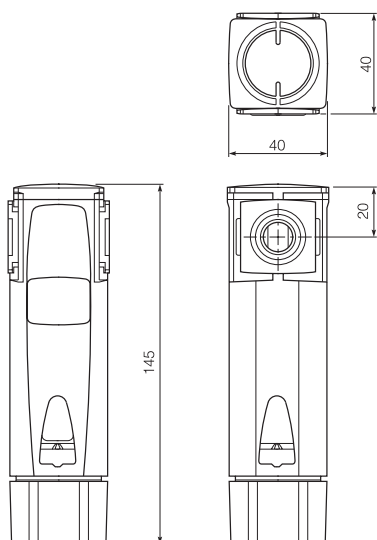
Fluid:	Compressed air
Maximum inlet pressure*:	17 bar Manual or Semi auto
Temperature range*:	-20°C to +80°C
Particle removal:	5 micron
Air quality:	Within ISO 8573-1, Class 3 and 5 (particulates)
Typical flow with 5µm element	
6,3 bar inlet pressure and 0.5 bar pressure drop:	18 l/s
Manual drain:	twist grip open and barbed connection
Semi-auto drain: 0,2 bar @ min flow of 0,4 l/s bowl pressure to close drain	with barbed connection
Bowl sump capacity:	10 cm ³

* Air supply must be dry enough to avoid ice formation at temperatures below +2°C

Material Specification

Body:	Aluminium
Sight glass:	Technopolymer
Body cover:	Polyester
Element:	Sintered polypropylene
Elastomers:	Nitrile NBR
Bayonet support:	Nylon
Drain:	Acetal

Dimensions (mm)

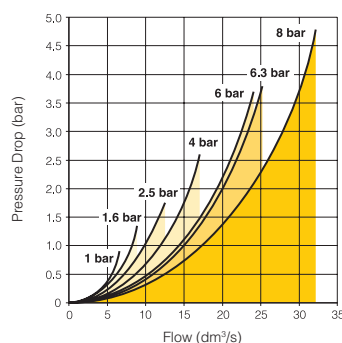


Service kits

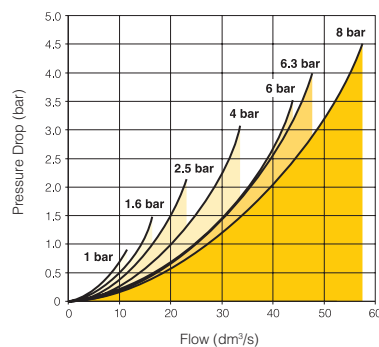
Description	Order code
5 micron element kit	P3HKA00ESE
40 micron element kit	P3HKA00ESG
Sight glass & manual drain kit	P3HKA00BSM
Sight glass & semi-auto drain kit	P3HKA00BSS

Flow characteristics

(1/8) 5 Micron Filter



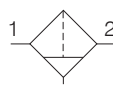
(1/4) 5 Micron Filter



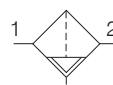
Standard Filter



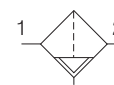
Symbols



Manual drain



Semi auto drain



Auto drain

- Integral 3/8 or 1/2 ports (BSPP & NPT)
- High efficiency 5 micron element as standard
- Excellent water removal efficiency
- Robust but lightweight aluminium construction
- One hand operation for easy element cartridge removal
- Positive bayonet latch to ensure correct & safe fitting
- No small easily lost parts
- No tools required for servicing

Options:

P3	K	F	A					N			
				BSPP (G)	1	3/8	3	5 Micron Element Standard	E	Manual Drain	SM
				NPT	9	1/2	4	40 Micron Element Optional	G	Semi Auto Drain	SS
										Auto Drain	SA

Port size	Description	Order Code	Flow l/s *	Max bar	Min temp °C	Max temp °C	Bowl size cm ³	Height mm	Width mm	Depth mm	Weight g
3/8	Manual drain	P3KFA13ESMN	45	17	-20	80	48	194	60	60	660
3/8	Semi auto drain	P3KFA13ESSN	45	17	-20	80	48	194	60	60	650
3/8	Auto drain	P3KFA13ESAN	45	17	-20	80	48	194	60	60	680
1/2	Manual drain	P3KFA14ESMN	50	17	-20	80	48	194	60	60	650
1/2	Semi auto drain	P3KFA14ESSN	50	17	-20	80	48	194	60	60	650
1/2	Auto drain	P3KFA14ESAN	50	17	-20	80	48	194	60	60	670

* flow with 6,3 bar inlet pressure and 0,5 pressure drop.

PDE2501TCUK-ca

Moduflex modular air preparation system

P3K Series

Technical Information

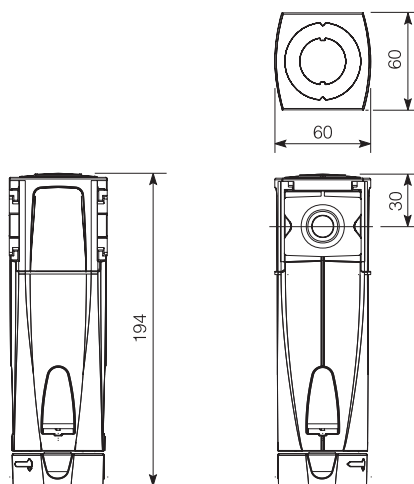
Fluid:	Compressed air
Maximum inlet pressure*:	17 bar
Temperature range*:	-20°C to +80°C
Particle removal:	5 micron and 40 micron
Air quality:	Within ISO 8573-1, Class 3 and 5 (particulates)
Typical flow with 5µm element 6,3 bar inlet pressure and 0.5 bar pressure drop:	50 l/s
Manual drain:	twist grip open and barbed connection
Semi-auto drain: 0,2 bar @ min flow of 0,4 l/s bowl pressure to close drain	with barbed connection
Auto drain: bowl pressure to close drain	1 bar
Operating range	1 to 17 bar
manual override facility (depress pin) barbed connection.	
Bowl sump capacity:	48 cm ³

* Air supply must be dry enough to avoid ice formation at temperatures below +2°C

Material Specification

Body:	Aluminium
Sight glass:	Technopolymer
Body cover:	Polyester
Element:	Sintered polypropylene
Elastomers:	Nitrile NBR
Bayonet support:	Acetal
Drain:	Acetal

Dimensions (mm)

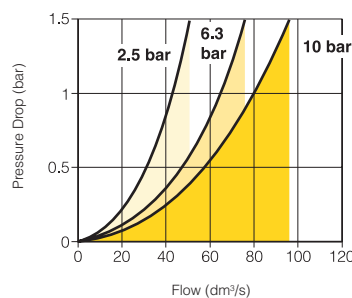


Service kits

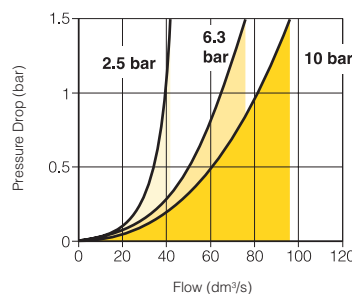
Description	Order code
5 micron element kit	P3KKA00ESE
40 micron element kit	P3KKA00ESG
Sight glass & manual drain kit	P3KKA00BSM
Sight glass & semi-auto drain kit	P3KKA00BSS
Sight glass & auto drain kit	P3KKA00BSA

Flow characteristics

(3/8) 5 Micron Filter



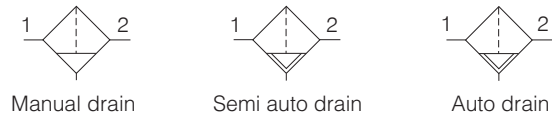
(1/2) 5 Micron Filter



Standard Filter



Symbols



- Integral 1/2, 3/4 or 1" ports (BSPP & NPT)
- High efficiency 5 micron element as standard
- Excellent water removal efficiency
- Robust but lightweight aluminium construction
- One hand operation for easy element cartridge removal
- Positive bayonet latch to ensure correct & safe fitting
- No small easily lost parts
- No tools required for servicing

Options:

P3	M	F	A					N			
				BSPP (G)	1	1/2	4	5 Micron Element Standard	E	Manual Drain	SM
				NPT	9	3/4	6			Semi Auto Drain	SS
						1"	8			Auto Drain	SA

Port size	Description	Order Code	Flow l/s *	Max bar	Min temp °C	Max temp °C	Bowl size cm ³	Height mm	Width mm	Depth mm	Weight g
1/2	Manual drain	P3MFA14ESMN	80	17	-20	80	100	255	80	80	1344
1/2	Semi auto drain	P3MFA14ESSN	80	17	-20	80	100	255	80	80	1334
1/2	Auto drain	P3MFA14ESAN	80	17	-20	80	100	255	80	80	1364
3/4	Manual drain	P3MFA16ESMN	101	17	-20	80	100	255	80	80	1320
3/4	Semi auto drain	P3MFA16ESSN	101	17	-20	80	100	255	80	80	1310
3/4	Auto drain	P3MFA16ESAN	101	17	-20	80	100	255	80	80	1340
1"	Manual drain	P3MFA18ESMN	105	17	-20	80	100	255	80	80	1280
1"	Semi auto drain	P3MFA18ESSN	105	17	-20	80	100	255	80	80	1270
1"	Auto drain	P3MFA18ESAN	105	17	-20	80	100	255	80	80	1300

* flow with 6,3 bar inlet pressure and 0,5 pressure drop.

PDE2501TCUK-ca

Moduflex modular air preparation system

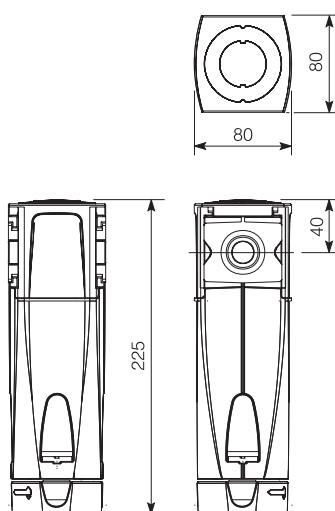
P3M Series

Technical Information

Fluid:	Compressed air
Maximum inlet pressure*:	17 bar
Temperature range*:	-20°C to +80°C
Particle removal:	5 micron
Air quality:	Within ISO 8573-1, Class 3
Typical flow with 5µm element 6,3 bar inlet pressure and 0.5 bar pressure drop:	105 l/s
Manual drain:	twist grip open and barbed connection
Semi-auto drain: 0,2 bar @ min flow of 0,4 l/s bowl pressure to close drain	with barbed connection
Auto drain: bowl pressure to close drain	1 bar
Operating range	1 to 17 bar
manual override facility (depress pin) barbed connection.	
Bowl sump capacity:	100 cm ³

* Air supply must be dry enough to avoid ice formation at temperatures below +2°C

Dimensions (mm)



Service kits

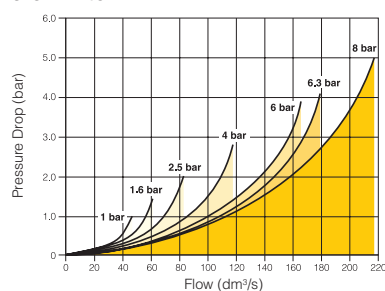
Description	Order code
5 micron element kit	P3MKA00ESE
Sight glass & manual drain kit	P3MKA00BSM
Sight glass & semi-auto drain kit	P3MKA00BSS
Sight glass & auto drain kit	P3MKA00BSA

Material Specification

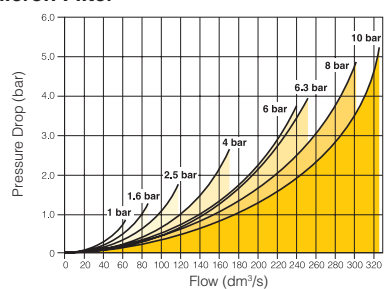
Body:	Aluminium
Sight glass:	Technopolymer
Body cover:	Polyester
Element:	Sintered polypropylene
Elastomers:	Nitrile NBR
Bayonet support:	Nylon
Drain:	Acetal

Flow characteristics

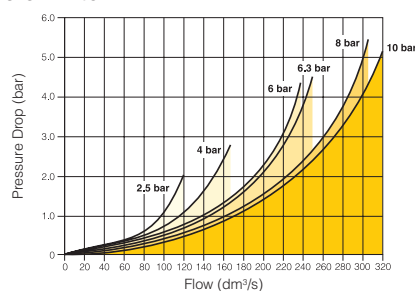
(1/2) 5 Micron Filter



(3/4) 5 Micron Filter



(1") 5 Micron Filter



Parker Hannifin Corporation
Pneumatic Division - Europe

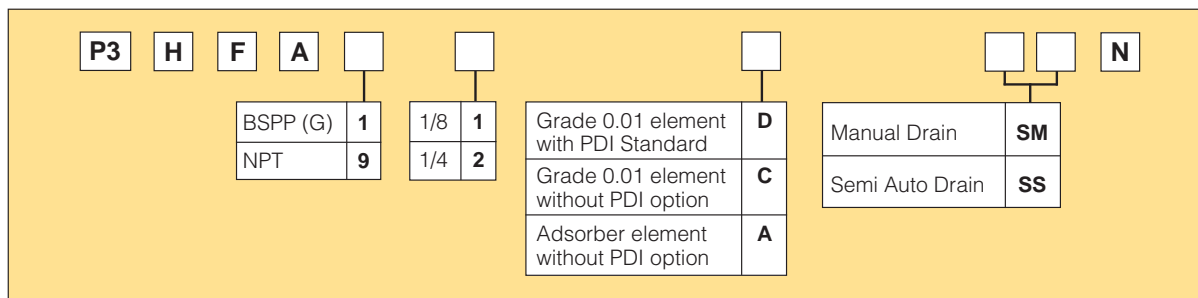
Coalescing Filters and Adsorbers



- Integral 1/8 or 1/4 ports (BSPP & NPT)
- Removes liquid aerosols and sub micron particles
- Oil free air for critical applications, such as air gauging, pneumatic instrumentation and control
- 0.01µm element as standard (coalescer)
- Differential Pressure Indicator (DPI) as standard on Coalescing Filters
- One hand operation for easy element cartridge removal
- Positive bayonet latch to ensure correct & safe fitting
- No tools required for servicing
- Adsorbing activated carbon element removes oil vapours and most hydrocarbons

Note: To optimise the life of coalescing element, it is advisable to install a P3HFA pre-filter with a 5 micron element upstream of the coalescing filter.

Options:



Port size	Description	Order Code	Flow l/s *	Max bar	Min temp °C	Max temp °C	Bowl size cm ³	Height mm	Width mm	Depth mm	Weight g
G1/8	Coalescing Filter, Manual drain	P3HFA11DSMN	3.5	17	-20	+66	10	157	40	40	274
G1/8	Coalescing Filter, Semi auto drain	P3HFA11DSSN	3.5	17	-20	+66	10	157	40	40	274
G1/4	Coalescing Filter, Manual drain	P3HFA12DSMN	4	17	-20	+66	10	157	40	40	274
G1/4	Coalescing Filter, Semi auto drain	P3HFA12DSSN	4	17	-20	+66	10	157	40	40	274
G1/8	Adsorber Filter, Manual drain	P3HFA11ASMN	6	17	-20	+50	10	145	40	40	269
G1/4	Adsorber Filter, Manual drain	P3HFA12ASMN	8	17	-20	+50	10	145	40	40	269

* flow with 6,3 bar inlet pressure and 0,2 pressure drop.

PDE2501TCUK-ca
Moduflex modular air preparation system

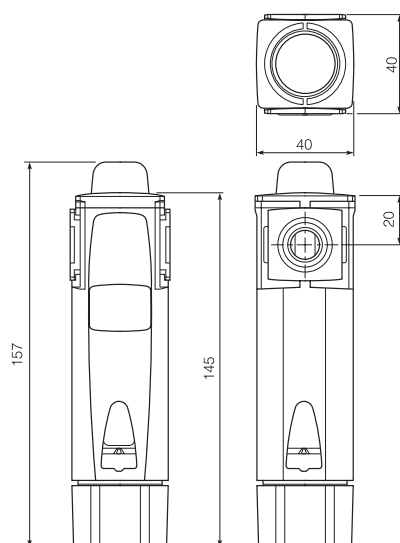
P3H Series

Technical Information

Fluid:	Compressed air
Maximum inlet pressure*:	17 bar
Temperature range*:	
Coalescing filter :	-20°C to +66°C
Adsorber filter :	-20°C to +50°C
Media specifications:	
Coalescing efficiency	(0.3 to 0.6 micron particles): 99.97%
Max. oil carryover (PPM w/w):	0.008
Typical flow with 0.01 micron element at 6,3 bar inlet pressure and 0.2 bar pressure drop:	Coalescer 4 l/s Adsorber 8 l/s
Manual drain:	twist grip open and barbed connection
Semi-auto drain: 0,2 bar @ min flow of 0,4 l/s bowl pressure to close drain	with barbed connection
Bowl sump capacity:	10 cm ³

* Air supply must be dry enough to avoid ice formation at temperatures below +2°C

Dimensions (mm)



Service kits

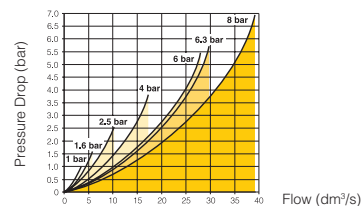
Description	Order code
0.01 micron coalescing element kit	P3HKA00ESC
Adsorber element kit	P3HKA00ESA
Sight glass & manual drain kit	P3HKA00BSM
Sight glass & semi-auto drain kit	P3HKA00BSS
Differential pressure indicator kit	P3HKA00RQ

Material Specification

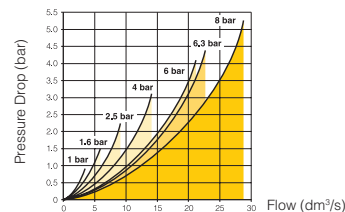
Body:	Aluminium
Sight glass:	Technopolymer
Filter cover:	Polyester
Coalescing element:	Borosilicate & felt glass fibres
Adsorber element:	Activated charcoal
Elastomers:	Nitrile NBR
Bayonet support:	Nylon
Drain:	Acetal
Differential pressure indicator materials:	
Body:	Technopolymer
Internal parts:	Acetal
Spring:	Stainless steel
Elastomers:	Nitrile NBR
Support plate	Aluminium
Screws	Steel / zinc plated

Flow characteristics

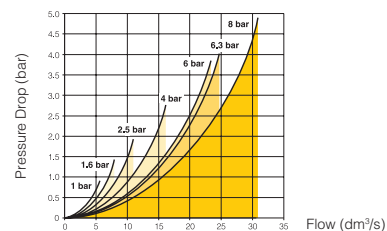
(1/8) 0.01µm Coalescing Filter



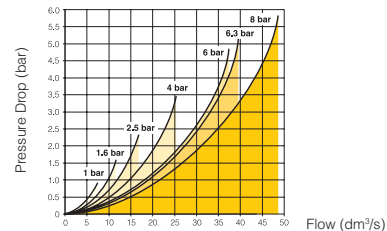
(1/4) 0.01µm Coalescing Filter



1/8) Adsorber Filter



(1/4) Adsorber Filter



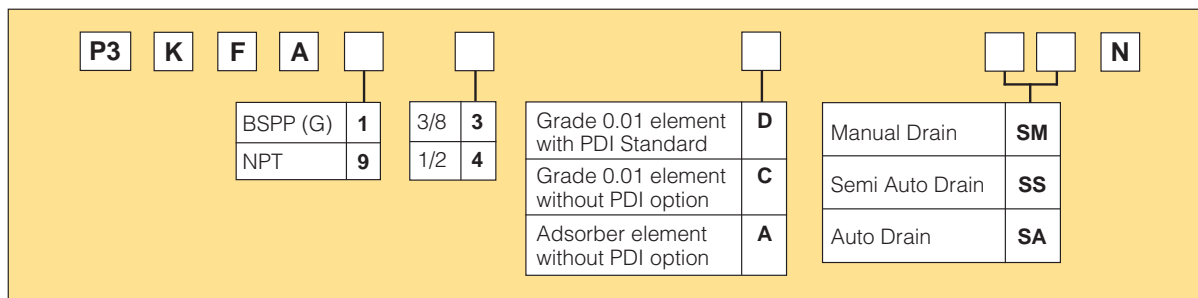
Coalescing Filters and Adsorbers



- Integral 3/8 or 1/2 ports (BSPP & NPT)
- Removes liquid aerosols and sub micron particles
- Oil free air for critical applications, such as air gauging, pneumatic instrumentation and control
- 0.01µm element as standard (coalescer)
- Differential Pressure Indicator (DPI) as standard on Coalescing Filters
- One hand operation for easy element cartridge removal
- Positive bayonet latch to ensure correct & safe fitting
- No tools required for servicing
- Adsorbing activated carbon element removes oil vapours and most hydrocarbons

Note: To optimise the life of coalescing element, it is advisable to install a P3KFA pre-filter with a 5 micron element upstream of the coalescing filter.

Options:



Port size	Description	Order Code	Flow l/s *	Max bar	Min temp °C	Max temp °C	Bowl size cm ³	Height mm	Width mm	Depth mm	Weight g
3/8	Coalescing Filter, Manual drain	P3KFA13DSMN	15	17	-20	66	48	202	60	60	660
3/8	Coalescing Filter, Semi auto drain	P3KFA13DSSN	15	17	-20	66	48	202	60	60	660
3/8	Coalescing Filter, Auto drain	P3KFA13DSAN	15	17	-20	66	48	202	60	60	680
1/2	Coalescing Filter, Manual drain	P3KFA14DSMN	16	17	-20	66	48	202	60	60	650
1/2	Coalescing Filter, Semi auto drain	P3KFA14DSSN	16	17	-20	66	48	202	60	60	650
1/2	Coalescing Filter, Auto drain	P3KFA14DSAN	16	17	-20	66	48	202	60	60	670
3/8	Adsorber Filter, Manual drain	P3KFA13ASMN	21	17	-20	50	48	194	60	60	670
1/2	Adsorber Filter, Manual drain	P3KFA14ASMN	28	17	-20	50	48	194	60	60	660

* flow with 6,3 bar inlet pressure and 0,2 pressure drop.

PDE2501TCUK-ca

Moduflex modular air preparation system

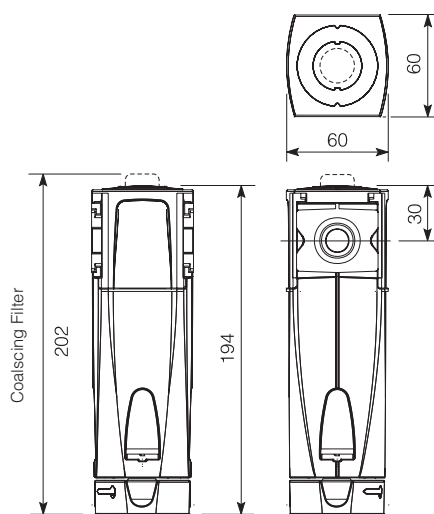
P3K Series

Technical Information

Fluid:	Compressed air	
Maximum inlet pressure*:	17 bar	
Temperature range*:	Coalescing filter : -20°C to +66°C Adsorber filter : -20°C to +50°C	
Media specifications:		
Coalescing efficiency	(0.3 to 0.6 micron particles): 99.97%	
Max. oil carryover (PPM w/w):	0.008	
Typical flow with 0.01 micron element at 6,3 bar inlet pressure and 0.2 bar pressure drop:	Coalescer	16 l/s
	Adsorber	28 l/s
Manual drain:	twist grip open and barbed connection	
Semi-auto drain: 0,2 bar @ min flow of 0,4 l/s bowl pressure to close drain	with barbed connection	
Auto drain: bowl pressure to close drain	1 bar	
Operating range	1 to 17 bar	
manual override facility (depress pin) barbed connection.		
Bowl sump capacity:	48 cm ³	

* Air supply must be dry enough to avoid ice formation at temperatures below +2°C

Dimensions (mm)



Service kits

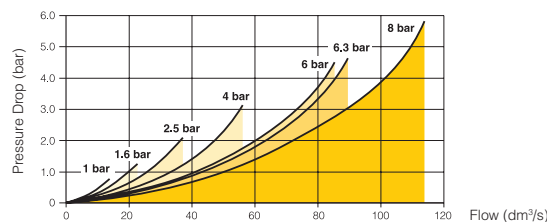
Description	Order code
0.01 micron coalescing element kit	P3KKA00ESC
Adsorber element kit	P3KKA00ESA
Sight glass & manual drain kit	P3KKA00BSM
Sight glass & semi-auto drain kit	P3KKA00BSS
Sight glass & auto drain kit	P3KKA00BSA
Differential pressure indicator kit	P3KKA00RQ

Material Specification

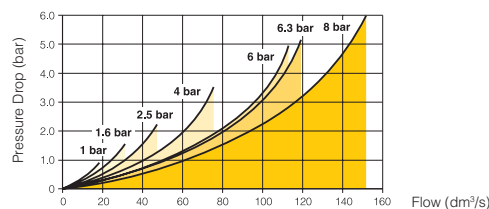
Body:	Aluminium
Sight glass:	Technopolymer
Filter cover:	Polyester
Coalescing element:	Borosilicate & felt glass fibres
Adsorber element:	Activated charcoal
Elastomers:	Nitrile NBR
Bayonet support:	Acetal
Drain:	Acetal
Differential pressure indicator materials:	
Body:	Technopolymer
Internal parts:	Acetal
Spring:	Stainless steel
Elastomers:	Nitrile NBR
Support plate	Aluminium
Screws	Steel / zinc plated

Flow characteristics

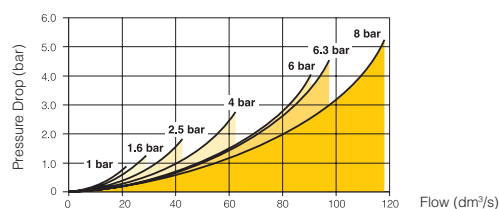
(3/8) 0.01µm Coalescing Filter



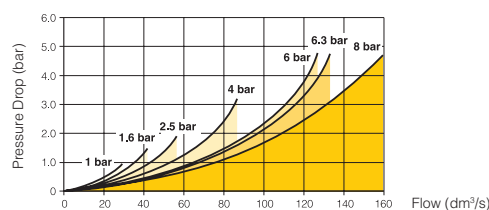
(1/2) 0.01µm Coalescing Filter



(3/8) Adsorber Filter



(1/2) Adsorber Filter



Coalescing Filters and Adsorbers



- Integral 1/2, 3/4 or 1" ports (BSPP & NPT)
- Removes liquid aerosols and sub micron particles
- Oil free air for critical applications, such as air gauging, pneumatic instrumentation and control
- 0.01µm element as standard (coalescer)
- Differential Pressure Indicator (DPI) as standard on Coalescing Filters
- One hand operation for easy element cartridge removal
- Positive bayonet latch to ensure correct & safe fitting
- No tools required for servicing
- Adsorbing activated carbon element removes oil vapours and most hydrocarbons

Note: To optimise the life of coalescing element, it is advisable to install a P3MFA pre-filter with a 5 micron element upstream of the coalescing filter.

Options:

P3	M	F	A							N
BSPP (G) 1		1/2 4		Grade 0.01 element with PDI Standard D		Manual Drain SM				
NPT 9		3/4 6		Grade 0.01 element without PDI option C		Semi Auto Drain SS				
		1" 8		Adsorber element without PDI option A		Auto Drain SA				

Port size	Description	Order Code	Flow l/s *	Max bar	Min temp °C	Max temp °C	Bowl size cm ³	Height mm	Width mm	Depth mm	Weight g
1/2	Coalescing Filter, Manual drain	P3MFA14DSMN	44	17	-20	66	100	265	80	80	1440
1/2	Coalescing Filter, Semi auto drain	P3MFA14DSSN	44	17	-20	66	100	265	80	80	1430
1/2	Coalescing Filter, Auto drain	P3MFA14DSAN	44	17	-20	66	100	265	80	80	1460
3/4	Coalescing Filter, Manual drain	P3MFA16DSMN	57	17	-20	66	100	265	80	80	1420
3/4	Coalescing Filter, Semi auto drain	P3MFA16DSSN	57	17	-20	66	100	265	80	80	1410
3/4	Coalescing Filter, Auto drain	P3MFA16DSAN	57	17	-20	66	100	265	80	80	1440
1"	Coalescing Filter, Manual drain	P3MFA18DSMN	58	17	-20	66	100	265	80	80	1400
1"	Coalescing Filter, Semi auto drain	P3MFA18DSSN	58	17	-20	66	100	265	80	80	1400
1"	Coalescing Filter, Auto drain	P3MFA18DSAN	58	17	-20	66	100	265	80	80	1420
1/2	Adsorber Filter, Manual drain	P3MFA14ASMN	37	17	-20	50	100	255	80	80	1374
3/4	Adsorber Filter, Manual drain	P3MFA16ASMN	41	17	-20	50	100	255	80	80	1350
1"	Adsorber Filter, Manual drain	P3MFA18ASMN	42	17	-20	50	100	255	80	80	1312

* flow with 6,3 bar inlet pressure and 0,2 pressure drop.

PDE2501TCUK-ca

Moduflex modular air preparation system

P3M Series

Technical Information

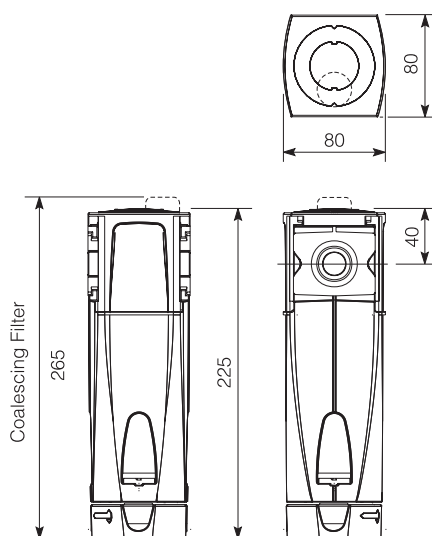
Fluid:	Compressed air	
Maximum inlet pressure*:	17 bar	
Temperature range*:		
Coalescing filter :	-20°C to +66°C	
Adsorber filter :	-20°C to +50°C	
Media specifications:		
Coalescing efficiency	(0.3 to 0.6 micron particles): 99.97%	
Max. oil carryover (PPM w/w):	0.008	
Typical flow with 0.01 micron element at 6,3 bar inlet pressure and 0.2 bar pressure drop:	Coalescer	57 l/s
pressure drop:	Adsorber	41 l/s
Manual drain:	twist grip open and barbed connection	
Semi-auto drain: 0,2 bar @ min flow of 0,4 l/s bowl pressure to close drain	with barbed connection	
Auto drain: bowl pressure to close drain	1 bar	
Operating range	1 to 17 bar	
manual override facility (depress pin)	barbed connection.	
Bowl sump capacity:	100 cm ³	

* Air supply must be dry enough to avoid ice formation at temperatures below +2°C

Material Specification

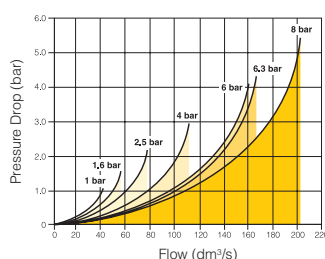
Body:	Aluminium
Sight glass:	Technopolymer
Filter cover:	Polyester
Coalescing element:	Borosilicate & felt glass fibres
Adsorber element:	Activated charcoal
Elastomers:	Nitrile NBR
Bayonet support:	Nylon
Drain:	Acetal
Differential pressure indicator materials:	
Body:	Technopolymer
Internal parts:	Acetal
Spring:	Stainless steel
Elastomers:	Nitrile NBR
Support plate	Aluminium
Screws	Steel / zinc plated

Dimensions (mm)

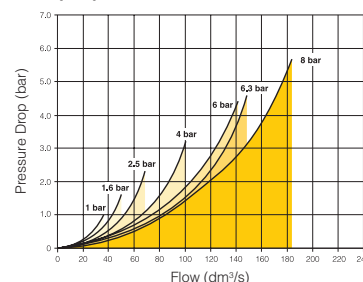


Flow characteristics

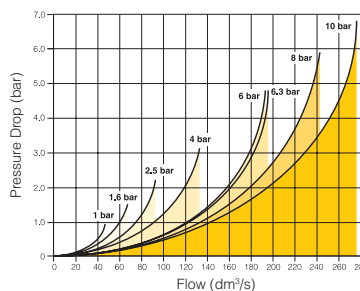
(1/2) 0.01µm Coalescing Filter



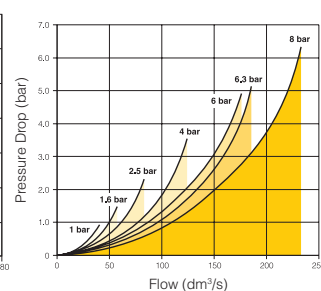
(1/2) Adsorber Filter



(3/4) 0.01µm Coalescing Filter



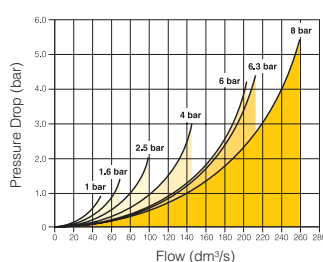
(3/4) Adsorber Filter



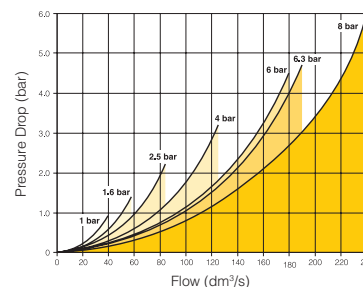
Service kits

Description	Order code
0.01 micron coalescing element kit	P3MKA00ESC
Adsorber element kit	P3MKA00ESA
Sight glass & manual drain kit	P3MKA00BSM
Sight glass & semi-auto drain kit	P3MKA00BSS
Sight glass & auto drain kit	P3MKA00BSA
Differential pressure indicator kit	P3MKA00RQ

(1") 0.01µm Coalescing Filter



(1") Adsorber Filter

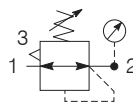


Parker Hannifin Corporation
Pneumatic Division - Europe

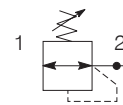
Regulator



Symbols



Self relieving regulator with gauge



Non relieving regulator with gauge

- Integral 1/8 or 1/4 ports (BSPP & NPT)
- Robust but lightweight aluminium construction
- Secondary pressure ranges 2, 4, 8 & 16 bar
- Rolling diaphragm for extended life
- Secondary aspiration plus balanced poppet provides quick response and accurate pressure regulation.
- Padlockable tamperproof kit
- Relieving & Non-relieving types
- Removable non-rising knob for panel mounting and tamper resistance.

Options:

P3	H	R	A				N		P
BSPP (G)	1	1/8	1	Relieving	B	0 - 2 bar	No Gauge	Y	
NPT	9	1/4	2	Non-relieving	N	0 - 4 bar	No Gauge	L	
						0 - 8 bar	No Gauge	N	
						0 - 16 bar	No Gauge	H	
						0 - 2 bar	Gauge	Z	
						0 - 4 bar	Gauge	M	
						0 - 8 bar	Gauge	G	
						0 - 16 bar	Gauge	J	

Port size	Description	Order Code	Flow l/s *	Max bar	Min temp °C	Max temp °C	Height mm	Width mm	Depth mm	Weight g
G1/8	8 bar relieving	P3HRA11BNNP	15	17	-20	+80	112	40	40	196
G1/8	8 bar relieving + pressure gauge	P3HRA11BNGP	15	17	-20	+80	112	40	78	200
G1/4	8 bar relieving	P3HRA12BNNP	29	17	-20	+80	112	40	40	196
G1/4	8 bar relieving + pressure gauge	P3HRA12BNGP	29	17	-20	+80	112	40	78	200

*flow with 10 bar inlet pressure, 6,3 bar set pressure and 1 bar pressure drop.

For Gauges: See page 77

PDE2501TCUK-ca
Moduflex modular air preparation system

P3H Series

Technical Information

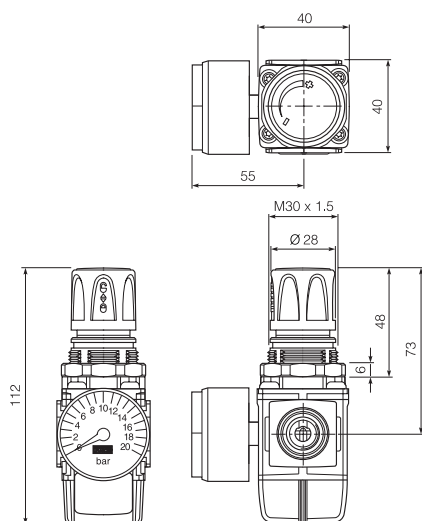
Fluid:	Compressed air
Maximum inlet pressure*:	17 bar
Temperature range*:	-20°C to +80°C
Typical flow with 10 bar inlet pressure, 6.3 bar set pressure and 1 bar pressure drop:	29 l/s
Gauge ports (x 2):	1/8"

* Air supply must be dry enough to avoid ice formation at temperatures below +2°C

Material Specification

Body:	Aluminium
Bonnet:	Glass filled polyamide
Regulator cover:	Polyester
Control Knob:	Polyamide
Valve:	Composite
Elastomers:	Nitrile NBR
Screws:	Steel / zinc plated

Dimensions (mm)



Service kits

Description	Order code
Angle bracket + metal lock ring	P3HKA00MS
Angle bracket + plastic lock ring	P3HKA00MR
Panel Mounting nut (aluminium)	P3HKA00MM
Plastic lock ring	P3HKA00MP
Diaphragm kit (relieving type)	P3HKA00RR
Diaphragm kit (non-relieving type)	P3HKA00RN
Lockable tamperproof kit	P3HKA00AL
Tamperproof knob kit	P3HKA00AT

Lockable Tamperproof Kit

This facilitates the tamperproofing of the Regulator and Filter-Regulator units. The hinged black part clamps over the control knob and is locked in place by sliding over the yellow cover. Four pad lock location holes are provided for added security if required.



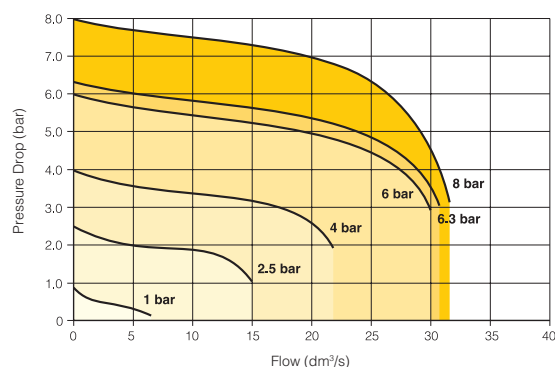
Order code

P3HKA00AL

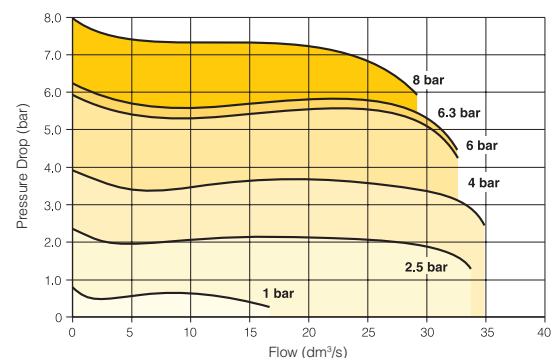
Note: Pad lock not included

Flow characteristics

Regulation characteristics: (1/8)



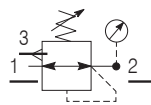
Regulation characteristics: (1/4)



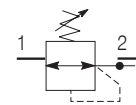
Manifold Regulators



Symbols



Self relieving regulator with gauge



Non relieving regulator with gauge

- Integral 1/4 ports (BSPP & NPT)
- Robust but lightweight aluminium construction
- Secondary pressure ranges 2, 4, 8 & 16 bar
- Rolling diaphragm for extended life
- Secondary aspiration plus balanced poppet provides quick response and accurate pressure regulation.
- Padlockable tamperproof kit
- Relieving & Non-relieving types
- Removable non-rising knob for panel mounting and tamper resistance.

Options:

P3	H	H	A				N		P
BSPP (G)	1	1/4	2	Relieving	B	0 - 2 bar No Gauge	Y		
NPT	9			Non-relieving	N	0 - 4 bar No Gauge	L		
						0 - 8 bar No Gauge	N		
						0 - 16 bar No Gauge	H		
						0 - 2 bar Gauge	Z		
						0 - 4 bar Gauge	M		
						0 - 8 bar Gauge	G		
						0 - 16 bar Gauge	J		

Port size	Description	Order Code	Flow l/s *	Max bar	Min temp °C	Max temp °C	Height mm	Width mm	Depth mm	Weight g
G1/4	8 bar relieving	P3HRA12BNNP	31	17	-20	+80	112	40	40	196
G1/4	8 bar relieving + pressure gauge	P3HRA12BNGP	31	17	-20	+80	112	40	78	200

*flow with 10 bar inlet pressure, 6,3 bar set pressure and 1 bar pressure drop.

For Gauges: See page 77

PDE2501TCUK-ca
Moduflex modular air preparation system

P3H Series

Technical Information

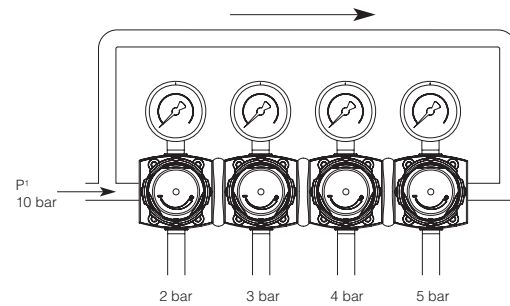
Fluid:	Compressed air
Maximum inlet pressure*:	17 bar
Temperature range*:	-20°C to +80°C
Typical flow with 10 bar inlet pressure, 6.3 bar set pressure and 1 bar pressure drop:	31 l/s
Gauge port:	1/8"
Outlet port:	1/4"

* Air supply must be dry enough to avoid ice formation at temperatures below +2°C

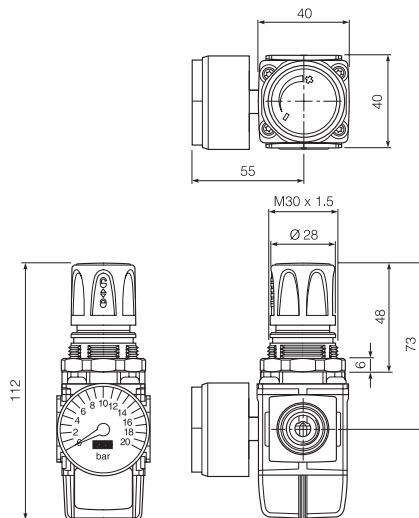
Material Specification

Body:	Aluminium
Bonnet:	Glass filled polyamide
Regulator cover:	Polyester
Control Knob:	Polyamide
Valve:	Composite
Elastomers:	Nitrile NBR
Screws:	Steel / zinc plated

Manifold Pressure Regulators

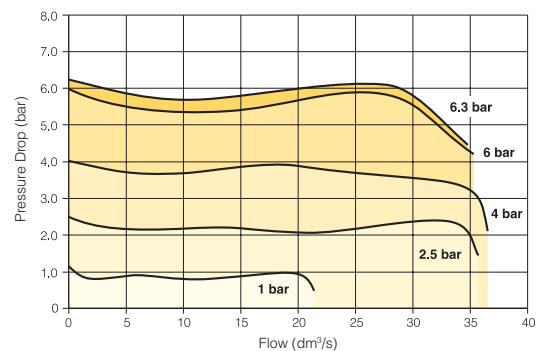


Dimensions (mm)



Flow characteristics

Regulation characteristics: (1/4)



Service kits

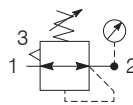
Description	Order code
Angle bracket + metal lock ring	P3HKA00MS
Angle bracket + plastic lock ring	P3HKA00MR
Panel Mounting nut (aluminium)	P3HKA00MM
Plastic lock ring	P3HKA00MP
Diaphragm kit (relieving type)	P3HKA00RR
Diaphragm kit (non-relieving type)	P3HKA00RN
Lockable tamperproof kit	P3HKA00AL
Tamperproof knob kit	P3HKA00AT



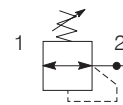
Regulator



Symbols



Self relieving regulator with gauge



Non relieving regulator with gauge

- Integral 3/8 or 1/2 ports (BSPP & NPT)
- Robust but lightweight aluminium construction
- Secondary pressure ranges 2, 4, 8 & 16 bar
- Rolling diaphragm for extended life
- Secondary aspiration plus balanced poppet provides quick response and accurate pressure regulation.
- Padlockable tamperproof kit
- Relieving & Non-relieving types
- Removable non-rising knob for panel mounting and tamper resistance.

Options:

P3	K	R	A	□	□	□	N	□	P		
				BSPP (G)	1	3/8	3	Relieving	B	0 - 2 bar No Gauge	Y
				NPT	9	1/2	4	Non-relieving	N	0 - 4 bar No Gauge	L
										0 - 8 bar No Gauge	N
										0 - 16 bar No Gauge	H
										0 - 2 bar Gauge	Z
										0 - 4 bar Gauge	M
										0 - 8 bar Gauge	G
										0 - 16 bar Gauge	J

Port size	Description	Order Code	Flow l/s *	Max bar	Min temp °C	Max temp °C	Height mm	Width mm	Depth mm	Weight g
3/8	8 bar relieving	P3KRA13BNNP	63	17	-20	80	144	60	60	465
3/8	8 bar relieving + pressure gauge	P3KRA13BNGP	63	17	-20	80	144	60	97	540
1/2	8 bar relieving	P3KRA14BNNP	73	17	-20	80	144	60	60	455
1/2	8 bar relieving + pressure gauge	P3KRA14BNGP	73	17	-20	80	144	60	97	455

*flow with 10 bar inlet pressure, 6,3 bar set pressure and 1 bar pressure drop.

For Gauges: See page 77

PDE2501TCUK-ca
Moduflex modular air preparation system

P3K Series

Technical Information

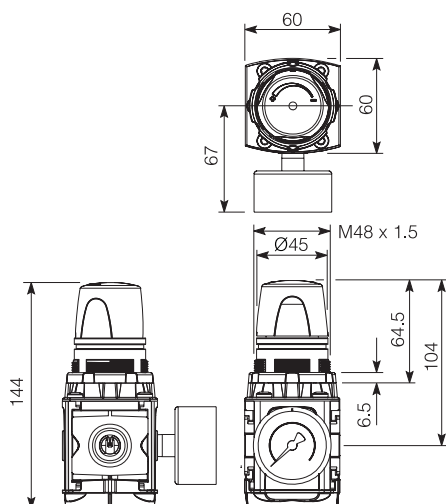
Fluid:	Compressed air
Maximum inlet pressure*:	17 bar
Temperature range*:	-20°C to +80°C
Typical flow with 10 bar inlet pressure, 6.3 bar set pressure and 1 bar pressure drop:	73 l/s
Gauge ports (x 2):	1/4"

* Air supply must be dry enough to avoid ice formation at temperatures below +2°C

Material Specification

Body:	Aluminium
Bonnet:	Glass filled polyamide
Regulator cover:	Polyester
Control Knob:	Polyamide
Valve:	Composite
Elastomers:	Nitrile NBR
Screws:	Steel / zinc plated

Dimensions (mm)



Service kits

Description	Order code
Angle bracket + metal lock ring	P3KKA00MS
Angle bracket + plastic lock ring	P3KKA00MR
Panel Mounting nut (aluminium)	P3KKA00MM
Plastic lock ring	P3KKA00MP
Lockable tamper-proof kit	P3KKA00AL
Tamper-proof knob kit	P3KKA00AT
Diaphragm kit (relieving type)	P3KKA00RR
Diaphragm kit (non-relieving type)	P3KKA00RN

Lockable Tamperproof Kit

This facilitates the tamperproofing of the Regulator and Filter-Regulator units. The hinged black part clamps over the control knob and is locked in place by sliding over the yellow cover. Four pad lock location holes are provided for added security if required.



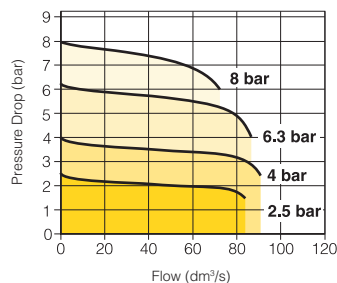
Order code

P3KKA00AL

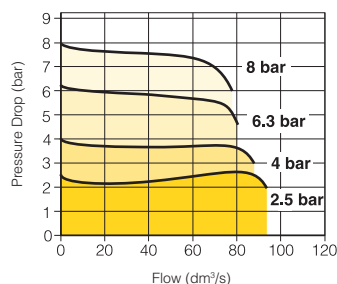
Note: Pad lock not included

Flow characteristics

Regulation characteristics: (3/8)



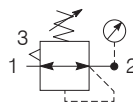
Regulation characteristics: (1/2)



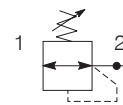
Manifold Regulators



Symbols



Self relieving regulator with gauge



Non relieving regulator with gauge

- Integral 3/8 or 1/2 ports (BSPP & NPT)
- Robust but lightweight aluminium construction
- Secondary pressure ranges 2, 4, 8 & 16 bar
- Rolling diaphragm for extended life
- Secondary aspiration plus balanced poppet provides quick response and accurate pressure regulation.
- Padlockable tamperproof kit
- Relieving & Non-relieving types
- Removable non-rising knob for panel mounting and tamper resistance.
- 1/2" aspirated full flow outlet port

Options:

P3	K	H	A				N		P
BSPP (G)	1	3/8	3	Relieving	B	0 - 2 bar	No Gauge	Y	
NPT	9	1/2	4	Non-relieving	N	0 - 4 bar	No Gauge	L	
						0 - 8 bar	No Gauge	N	
						0 - 16 bar	No Gauge	H	
						0 - 2 bar	Gauge	Z	
						0 - 4 bar	Gauge	M	
						0 - 8 bar	Gauge	G	
						0 - 16 bar	Gauge	J	

Port size	Description	Order Code	Flow l/s *	Max bar	Min temp °C	Max temp °C	Height mm	Width mm	Depth mm	Weight g
3/8	8 bar relieving	P3KHA13BNNP	63	17	-20	80	144	60	60	490
3/8	8 bar relieving + pressure gauge	P3KHA13BNGP	63	17	-20	80	144	60	97	565
1/2	8 bar relieving	P3KHA14BNNP	73	17	-20	80	144	60	60	480
1/2	8 bar relieving + pressure gauge	P3KHA14BNGP	73	17	-20	80	144	60	97	555

For Gauges: See page 77

PDE2501TCUK-ca
Moduflex modular air preparation system

P3K Series

Technical Information

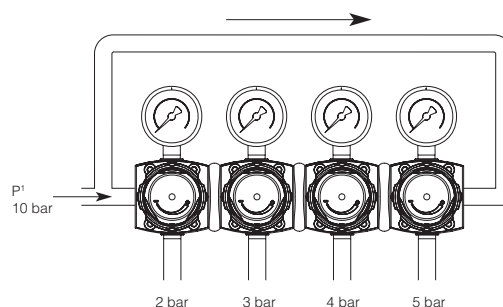
Fluid:	Compressed air
Maximum inlet pressure*:	17 bar
Temperature range*:	-20°C to +80°C
Typical flow with 10 bar inlet pressure, 6.3 bar set pressure and 1 bar pressure drop:	73 l/s
Gauge (pressure) port:	1/4"
Outlet port:	1/2"

* Air supply must be dry enough to avoid ice formation at temperatures below +2°C

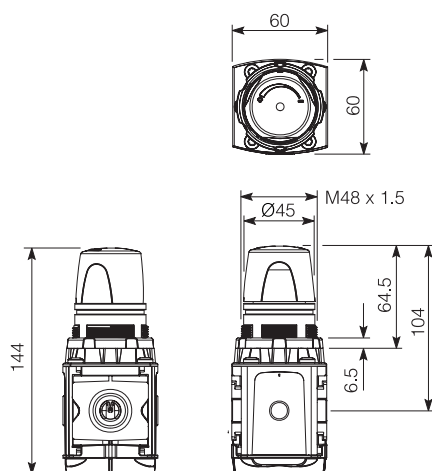
Material Specification

Body:	Aluminium
Bonnet:	Glass filled polyamide
Regulator cover:	Polyester
Control Knob:	Polyamide
Valve:	Composite
Elastomers:	Nitrile NBR
Screws:	Steel / zinc plated

Manifold Pressure Regulators

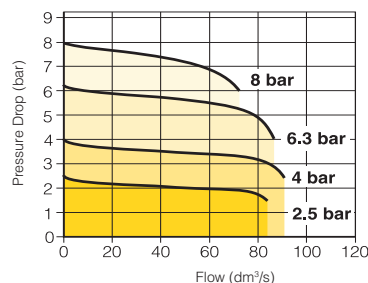


Dimensions (mm)

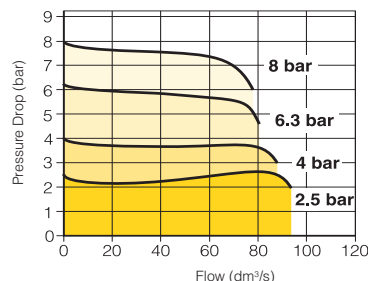


Flow characteristics

Regulation characteristics: (3/8)



Regulation characteristics: (1/2)



Service kits

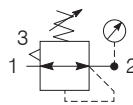
Description	Order code
Angle bracket + metal lock ring	P3KKA00MS
Angle bracket + plastic lock ring	P3KKA00MR
Panel Mounting nut (aluminium)	P3KKA00MM
Plastic lock ring	P3KKA00MP
Lockable tamper-proof kit	P3KKA00AL
Tamper-proof knob kit	P3KKA00AT
Diaphragm kit (relieving type)	P3KKA00RR
Diaphragm kit (non-relieving type)	P3KKA00RN



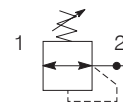
Key Lockable Regulator



Symbols



Self relieving regulator with gauge



Non relieving regulator

- Integral 3/8 or 1/2 ports (BSPP & NPT)
- Robust but lightweight aluminium construction
- Secondary pressure ranges 2, 4, 8 & 16 bar
- Rolling diaphragm for extended life
- Secondary aspiration plus balanced poppet provides quick response and accurate pressure regulation.
- Relieving & Non-relieving types

Options:

P3	K	R	A	□	□	□	K	□	M
BSPP (G)	1	3/8	3	Relieving		B	0 - 2 bar No Gauge	Y	
NPT	9	1/2	4	Non-relieving		N	0 - 4 bar No Gauge	L	
							0 - 8 bar No Gauge	N	
							0 - 16 bar No Gauge	H	
							0 - 2 bar Gauge	Z	
							0 - 4 bar Gauge	M	
							0 - 8 bar Gauge	G	
							0 - 16 bar Gauge	J	

Port size	Description	Order Code	Flow l/s *	Max bar	Min temp °C	Max temp °C	Height mm	Width mm	Depth mm	Weight g
3/8	8 bar relieving	P3KRA13BKNM	63	17	-20	80	186	60	60	810
3/8	8 bar relieving + pressure gauge	P3KRA13BKGM	63	17	-20	80	186	60	97	860
1/2	8 bar relieving	P3KRA14BKNM	73	17	-20	80	186	60	60	800
1/2	8 bar relieving + pressure gauge	P3KRA14BKGM	73	17	-20	80	186	60	97	850

*flow with 10 bar inlet pressure, 6,3 bar set pressure and 1 bar pressure drop.

For Gauges: See page 77

PDE2501TCUK-ca
Moduflex modular air preparation system

P3K Series

Technical Information

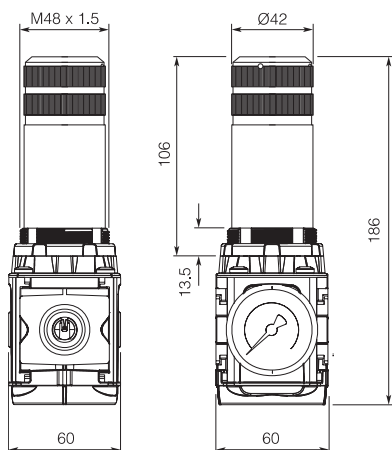
Fluid:	Compressed air
Maximum inlet pressure*:	17 bar
Temperature range*:	-20°C to +80°C
Typical flow with 10 bar inlet pressure, 6.3 bar set pressure and 1 bar pressure drop:	73 l/s
Gauge ports (x 2):	1/4"

* Air supply must be dry enough to avoid ice formation at temperatures below +2°C

Material Specification

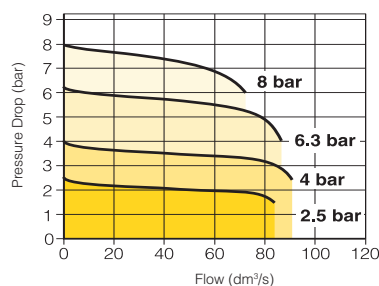
Body:	Aluminium
Bonnet:	Aluminium
Regulator cover:	Polyester
Control Knob:	Aluminium
Valve:	Composite
Elastomers:	Nitrile NBR
Screws:	Steel / zinc plated

Dimensions (mm)

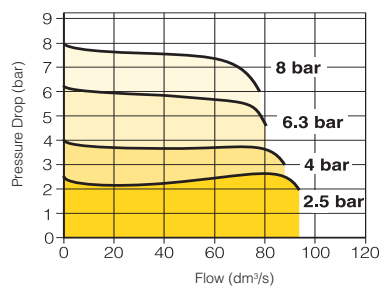


Flow characteristics

Regulation characteristics: (3/8)



Regulation characteristics: (1/2)



Service kits

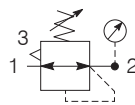
Description	Order code
Angle bracket + metal panel mounting ring	P3KKA00MS
Panel Mounting nut (aluminium)	P3KKA00MM
Diaphragm kit (relieving type)	P3KKA00RR
Diaphragm kit (non-relieving type)	P3KKA00RN



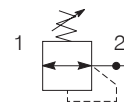
Regulator



Symbols



Self relieving regulator with gauge



Non relieving regulator with gauge

- Integral 1/2, 3/4 or 1" ports (BSPP & NPT)
- Robust but lightweight aluminium construction
- Secondary pressure ranges 2, 4, 8 & 16 bar
- Rolling diaphragm for extended life
- Secondary aspiration plus balanced poppet provides quick response and accurate pressure regulation.
- Padlockable tamperproof kit
- Relieving & Non-relieving types
- Removable non-rising knob for panel mounting and tamper resistance.

Options:

P3	M	R	A				N		N
BSPP (G)	1	1/2	4	Relieving	B	0 - 2 bar	No Gauge	Y	
NPT	9	3/4	6	Non-relieving	N	0 - 4 bar	No Gauge	L	
		1"	8			0 - 8 bar	No Gauge	N	
						0 - 16 bar	No Gauge	H	
						0 - 2 bar	Gauge	Z	
						0 - 4 bar	Gauge	M	
						0 - 8 bar	Gauge	G	
						0 - 16 bar	Gauge	J	

Port size	Description	Order Code	Flow l/s *	Max bar	Min temp °C	Max temp °C	Height mm	Width mm	Depth mm	Weight g
1/2	8 bar relieving	P3MRA14BNNN	100	17	-20	80	185	80	80	1085
1/2	8 bar relieving + pressure gauge	P3MRA14BNGN	100	17	-20	80	185	80	115	1135
3/4	8 bar relieving	P3MRA16BNNN	129	17	-20	80	185	80	80	1080
3/4	8 bar relieving + pressure gauge	P3MRA16BNGN	129	17	-20	80	185	80	115	1130
1"	8 bar relieving	P3MRA18BNNN	130	17	-20	80	185	80	80	1075
1"	8 bar relieving + pressure gauge	P3MRA18BNGN	130	17	-20	80	185	80	115	1125

*flow with 10 bar inlet pressure, 6,3 bar set pressure and 1 bar pressure drop.

For Gauges: See page 77

PDE2501TCUK-ca
Moduflex modular air preparation system

P3M Series

Technical Information

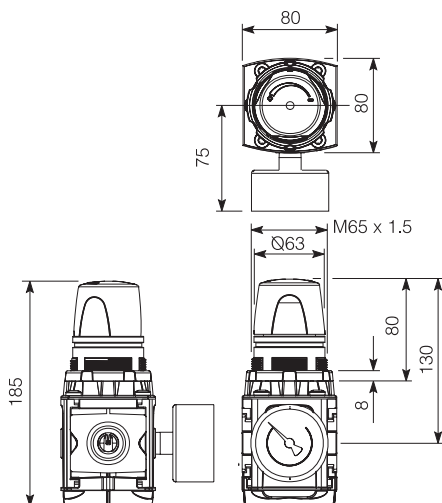
Fluid:	Compressed air
Maximum inlet pressure*:	17 bar
Temperature range*:	-20°C to +80°C
Typical flow with 10 bar inlet pressure, 6.3 bar set pressure and 1 bar pressure drop:	129 l/s
Gauge port (x 2):	1/4"

* Air supply must be dry enough to avoid ice formation at temperatures below +2°C

Material Specification

Body:	Aluminium
Bonnet:	Glass filled polyamide
Regulator cover:	Polyester
Control Knob:	Polyamide
Valve:	Composite
Elastomers:	Nitrile NBR
Screws:	Steel / zinc plated

Dimensions (mm)



Service kits

Description	Order code
Angle bracket + metal lock ring	P3MKA00MS
Panel mounting nut (aluminium)	P3MKA00MM
Lockable tamper-proof kit	P3MKA00AL
Tamper-proof knob kit	P3MKA00AT
Diaphragm kit (relieving type)	P3MKA00RR
Diaphragm kit (non-relieving type)	P3MKA00RN

Lockable Tamperproof Kit

This facilitates the tamperproofing of the Reglator and Filter-Regulator units. The hinged black part clamps over the control knob and is locked in place by sliding over the yellow cover. Four pad lock location holes are provided for added security if required.



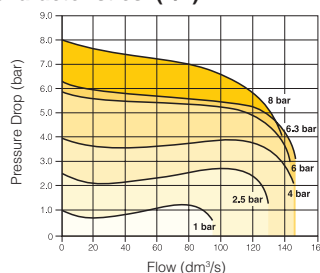
Order code

P3MKA00AL

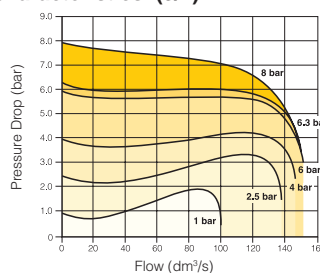
Note: Pad lock not included

Flow characteristics

Regulation characteristics: (1/2)



Regulation characteristics: (3/4)



Regulation characteristics: (1")

