

## Large Bore

Crimped Industrial Hoses

aerospace  
climate control  
electromechanical  
filtration  
fluid & gas handling  
hydraulics  
pneumatics  
process control  
sealing & shielding



ENGINEERING YOUR SUCCESS.

# Large Bore

Departure into new dimensions with crimped industrial hoses

- Crimped hose assemblies instead of clamps solution
- Defined crimp dimensions
- More reliability, safety and more standardisation
- Reduced assembly time
- Special connection types on requests
- Broad range of accessories (protective sleeves, guards and hose whip restraints)

The complete range of large bore crimped return lines based on large bore industrial hoses and its dedicated fittings has been developed for challenging environment conditions and for applications such as the transport of water, fuel and hydraulic oils.

The variety of hoses includes the well-known hose type BEVERA 10 for water applications as well as oil and fuel hoses such as CARBURITE 10 and 16, CHEMIOEL EN 12115 and the new hose CERVINO, specially developed for very low temperatures (-40 °C).



## Markets



The Parker industrial hose range with I.D. of 63.5 / 75 / 100 / 125 / 150 and 200 mm is covered with a new two piece fitting series which can be manufactured with the most common connection configurations such as 3000 psi flanges, Victaulic as well as 45° or 90° elbows and customized solutions (drop lengths and special hose end connections). The proven crimp fitting of series 48 are used for smaller hose diameters up to DN 50 (size -32) with considerable advantages in fitting inventory management (same fitting series for both industrial and hydraulic hose types).

The new fitting range (I.D.  $\geq$  63.5 mm) has been successfully pressure tested with Nitrogen, which means that the mentioned hoses (and others) are also suitable for air pressure applications up to 16 bar. An important advantage is that the crimped technology is safer and requires less space in comparison to half-shell bonding. With the new large bore crimped return lines, Parker customers will receive special solutions in terms of technical instructions for the production of safe hose assemblies. As for the biggest sizes (up to I.D. 200 mm), Parker can provide ready made assemblies as well. Hose and fittings line specially designed for sturdy services, can be offered

with a broad range of accessories, e.g. protection sleeves, guards and safety restraining system.

Finally a complete program for the departure towards new dimensions with large bore crimped industrial hoses is now available.

## Unique Product Features

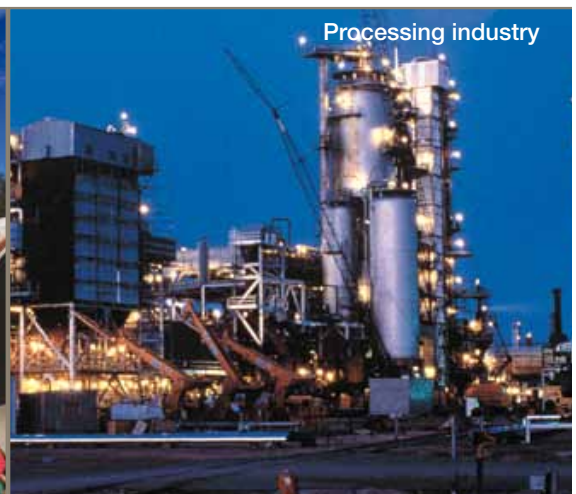
- Technology Nitrogen tested for safe air applications
- Space saving compared to clamps technology solution
- Developed for sturdy application – Tested up to safety factor 4:1
- Up to 2", all common fitting connection types are available with the 48 series fittings
- From 2" on, main connections are SAE 3000 psi flanges (included 45° and 90°)
- Over 4", Victaulic connection delivered as standard



Wind power generation



Off highway mobile equipment



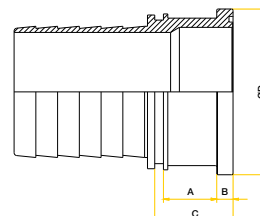
Processing industry

# Large Bore Crimp Fittings

## Nipple / Shell

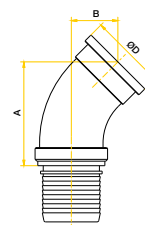
### Flange Straight SAE 3000 psi

Nipple Part Number	Nominal diameter DN	A mm	B mm	C mm	ØD mm
IF801111063	63	45	9.60	60.60	84.10
IF801111075	75	42	9.53	57.50	101.60
IF801111100	100	70	11.23	88.00	127.00



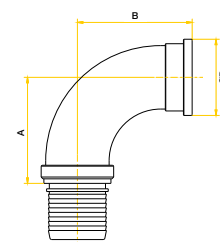
### Flange 45° Elbow SAE 3000 psi

Nipple Part Number	Nominal diameter DN	A mm	B mm	ØD mm
IF8011310063	63	51	114	84.10
IF8011310075	75	58	122	101.60
IF8011310100	100	80	161	127.00



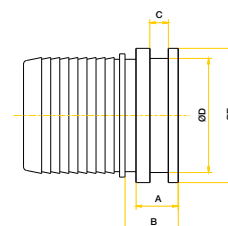
### Flange 90° Elbow SAE 3000 psi

Nipple Part Number	Nominal diameter DN	A mm	B mm	ØD mm
IF801121063	63	117	127	84.10
IF801121075	75	131	149	101.60
IF8011210100	100	133	188	127.00



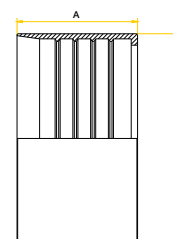
### VICTAULIC

Nipple Part Number	Nominal diameter DN	A mm	B mm	C mm	ØD mm	ØE mm
IF801311063	63	40.6	46.6	16	72.3	76.1
IF801311075	75	40.6	46.6	16	84.9	88.9
IF801311100	100	40.6	47.6	16	110.0	114.3
IF801311125	125	40.6	47.6	16	135.5	141.3
IF801311150	150	40.6	47.6	16	164.0	168.3
IF801311200	200	49.9	56.9	19	214.4	219.1



### Standard Shell

Shell Part Number	Nominal diameter DN	A mm	ØB mm
IF802001063	63	63	94
IF802001075	75	64	108
IF802001100	100	95	136
IF802001125	125	110	165
IF802001150	150	142	188
IF802001200	200	162	244



# Large Bore Crimp Fittings

## How to Order

### Nipple

<b>Fitting</b>	
IF	Industrial Fittings
<b>Type</b>	
80	Crimped Fittings
<b>DESCRIPTION</b>	
1	Nipple
<b>Connection</b>	
1	Flange SAE 3000 psi
2	Nipple Male BSPP
3	VICTAULIC
<b>End Configuration</b>	
1	Straight
2	90° Elbow
3	45° Elbow
<b>Material</b>	
1	Steel
2	Brass
3	Stainless Steel
<b>Hose ID</b>	
100	Ø100 mm
075	Ø 75 mm
063	Ø 63 mm
<b>IF</b>	<b>80 1 1 1 1 063</b>

**Nipple: IF801111063**

- Industrial Fittings
- Crimped Fittings
- Nipple
- Flange
- Straight
- Steel
- Ø 63 mm

### Shell

<b>Fitting</b>	
IF	Industrial Fittings
<b>Type</b>	
80	Crimped Fittings
<b>DESCRIPTION</b>	
2	Shell
<b>Connection</b>	
00	Standard
<b>Material</b>	
1	Steel
2	Brass
3	Stainless Steel
<b>Hose ID</b>	
100	Ø100 mm
075	Ø 75 mm
063	Ø 63 mm
<b>IF</b>	<b>80 2 00 1 075</b>

**Shell: IF802001075**

- Industrial Fittings
- Crimped Fittings
- Shell
- Standard
- Steel
- Ø 75 mm

# Large Bore Hoses

- Premium quality compounds ensure maximum performance in the most critical applications such as narrow spaces, extreme weather conditions, high levels of ozone etc.
- The combination of large bore industrial hoses and its dedicated fittings deliver higher performance in terms of safety and reliability, even in tough environment conditions
- Top performers with 16 bar working pressure and 4:1 safety factor are CHEMIOEL and CERVINO
- The new CERVINO is the preferred solution for a variety of outdoor applications (wind power stations) and keeps its original features of flexibility and bending radius even at the lowest temperature conditions
- Parker's large bore crimped return lines deliver a strong connection for all industrial applications

## CARBURITE 10

Suction and delivery of mineral oils and fuels (with aromatic content not exceeding 50 %) in road and rail tankers, service stations and refineries.



Part Number/ Standard length m	I.D. mm	O.D. mm	Working Pressure			Burst Pressure			Weight kg/m	min. Bend Radius mm
			MPa	psi	bar	MPa	psi	bar		
IH36531001/40	63.5	75	1.0	150.0	10	3.0	450.0	30	2.09	380
IH36530208/20	75	87	1.0	150.0	10	3.0	450.0	30	2.68	450
IH36530211/20	100	114	1.0	150.0	10	3.0	450.0	30	4.02	600
IH36531010/20	125	140	1.0	150.0	10	3.0	450.0	30	5.66	750
IH36531050/10	150	170	1.0	150.0	10	3.0	450.0	30	7.27	900

**Tube:** Black, smooth, NBR rubber compound, resistant to oil and fuel with an aromatic content not exceeding 50 %

**Reinforcement:** Synthetic textile fabrics and embedded steel wire helix

**Cover:** Black, smooth, antistatic (R<1 MΩ/m), NBR/SBR rubber compound, oil, fuel, abrasion, ageing and weather resistant

**Temperature Range:** -30 °C (-22 °F) to +80 °C (+176 °F); up to +100 °C (+212 °F) for oil

**Suction:** Max. 0,8 bar (600 mm Hg)

RUBBER OIL HOSE CARBURITE 10 bar MADE IN ITALY Parker ITR

## CARBURITE 16

Suction and delivery of mineral oils and fuels with an aromatic content not exceeding 50 %.



Part Number/ Standard length m	I.D. mm	O.D. mm	Working Pressure			Burst Pressure			Weight kg/m	min. Bend Radius mm
			MPa	psi	bar	MPa	psi	bar		
IH36532660/40	63.5	80	1.6	232.0	16	4.8	696.0	48	2.48	380
IH36532655/40	75	90	1.6	232.0	16	4.8	696.0	48	3.03	450
IH36532656/40	100	116	1.6	232.0	16	4.8	696.0	48	4.45	600
IH36532657/40	125	142	1.6	232.0	16	4.8	696.0	48	5.63	750
IH36532658/15	150	172	1.6	232.0	16	4.8	696.0	48	7.80	900
IH36532659/12	203	235	1.6	232.0	16	4.8	696.0	48	18.45	1400

**Tube:** Black, smooth, NBR rubber compound, resistant to oil and fuel with an aromatic content not exceeding 50 %

**Reinforcement:** Synthetic textile fabrics and embedded steel wire helix

**Cover:** Black, NBR/SBR rubber compound, antistatic (R < 1 MΩ/m) oil, fuel, abrasion, ageing and weather resistant

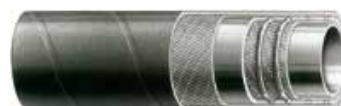
**Temperature Range:** -25 °C (-13 °F) to +80 °C (+176 °F)

**Suction:** Max. 0,8 bar (600 mm Hg)

RUBBER OIL HOSE CARBURITE 16 bar MADE IN ITALY Parker ITR

## CHEMIOEL EN 12115

Suction and delivery of mineral oils and fuels with an aromatic content not exceeding 50 %.



Part Number/ Standard length m	I.D. mm	O.D. mm	Working Pressure			Burst Pressure			Weight kg/m	min. Bend Radius mm
			MPa	psi	bar	MPa	psi	bar		
IH36530234/40	63.5	79	1.6	232.0	16	6.4	928.0	64	2.80	300
IH36530235/40	75	91	1.6	232.0	16	6.4	928.0	64	3.30	350
IH36530236/20	100	116	1.2	180.0	12	4.8	696.0	48	4.70	450

**Tube:** Black, smooth, NBR rubber compound, resistant to oil and fuel with an aromatic content not exceeding 50 %  
**Reinforcement:** Synthetic textile fabrics, embedded steel wire helix and built-in copper wire to facilitate the electrical connection between the hose and the end couplings

**Cover:** Black, smooth, NBR/SBR rubber compound, antistatic (R < 1 MΩ/m), oil, fuel, abrasion, ageing and weather resistant

**Temperature Range:** -25 °C (-13 °F) to +80 °C (+176 °F); up to +100 °C (+212 °F) for oil

**Suction:** Max. 0,8 bar (600 mm Hg)

**EN 12115 NBR - SD 1 I.D. - PN .. - BP .. bar Ω - TRbF 131 T2 p.5.5 - Quarter/Year MADE IN ITALY Parker ITR**

## BEVERA 10

Suction and delivery of water and non-aggressive liquids. It is recommended for loading and discharge of storage tanks, tankers, for irrigation and for all applications where a flexible and easy to handle hose is required.



Part Number/ Standard length m	I.D. mm	O.D. mm	Working Pressure			Burst Pressure			Weight kg/m	min. Bend Radius mm
			MPa	psi	bar	MPa	psi	bar		
IH36214061/40	63.5	75	1.0	150.0	10	3.0	450.0	30	2.33	380
IH36214064/20	75	86.5	1.0	150.0	10	3.0	450.0	30	2.75	450
IH36214068/20	100	114	1.0	150.0	10	3.0	450.0	30	3.98	600
IH36211010/20	125	140	1.0	150.0	10	3.0	450.0	30	5.66	750
IH36211050/10	150	170	1.0	150.0	10	3.0	450.0	30	7.73	900

**Tube:** Black, smooth SBR nitrosamine free rubber compound

**Reinforcement:** Synthetic textile fabrics and embedded steel wire helix

**Cover:** Black, abrasion, ageing and weather-resistant SBR nitrosamine free rubber compound

**Temperature Range:** -30 °C (-22 °F) to +80 °C (+176 °F)

**Suction:** Max. 0,8 bar (600 mm Hg)

**RUBBER WATER HOSE BEVERA W.P. bar MADE IN ITALY Parker ITR**

## CERVINO

Suction and delivery of mineral oils and fuels, with an aromatic content not exceeding 50%. The special compounds make the hose specially indicated for outdoor applications, when low temperature conditions are implicated.



Part Number/ Standard length m	I.D. mm	O.D. mm	Working Pressure			Burst Pressure			Weight kg/m	min. Bend Radius mm
			MPa	psi	bar	MPa	psi	bar		
IH36530431/40	63.5	79	1.6	232.0	16	6.4	928.0	64	2.80	250
IH36530432/40	75	91	1.6	232.0	16	6.4	928.0	64	3.30	300
IH36530433/40	100	116	1.2	150.0	12	4.8	696.0	48	4.70	400

**Tube:** Black, smooth, NBR rubber compound, resistant to oil and fuel with an aromatic content not exceeding 50 %

**Reinforcement:** Synthetic textile fabrics, embedded steel wire helix and built-in copper wire to facilitate the electrical connection between the hose and the end couplings

**Cover:** Black, smooth, abrasion resistance NBR/SBR rubber compound, antistatic (R < 1 MΩ/m), oil, fuel, low temperature, ageing and weather resistant

**Temperature Range:** -40 °C (-40 °F) to +80 °C (+176 °F); up to +100 °C (+212 °F) for oil

**Suction:** Max. 0,8 bar (600 mm Hg)

**CERVINO EN 12115 NBR - SD1 I.D. PN., -BP .. bar Ω - TRbF 131 T2 u-5-5 - Quarter/Year MADE IN ITALY Parker ITR**

# Parker Worldwide

## Europe, Middle East, Africa

### AE – United Arab Emirates,

Dubai  
Tel: +971 4 8127100  
parker.me@parker.com

### AT – Austria, Wiener Neustadt

Tel: +43 (0)2622 23501-0  
parker.austria@parker.com

### AT – Eastern Europe, Wiener Neustadt

Tel: +43 (0)2622 23501 900  
parker.easteurope@parker.com

### AZ – Azerbaijan, Baku

Tel: +994 50 2233 458  
parker.azerbaijan@parker.com

### BE/LU – Belgium, Nivelles

Tel: +32 (0)67 280 900  
parker.belgium@parker.com

### BY – Belarus, Minsk

Tel: +375 17 209 9399  
parker.belarus@parker.com

### CH – Switzerland, Etoy

Tel: +41 (0)21 821 87 00  
parker.switzerland@parker.com

### CZ – Czech Republic, Klecany

Tel: +420 284 083 111  
parker.czechrepublic@parker.com

### DE – Germany, Kaarst

Tel: +49 (0)2131 4016 0  
parker.germany@parker.com

### DK – Denmark, Ballerup

Tel: +45 43 56 04 00  
parker.denmark@parker.com

### ES – Spain, Madrid

Tel: +34 902 330 001  
parker.spain@parker.com

### FI – Finland, Vantaa

Tel: +358 (0)20 753 2500  
parker.finland@parker.com

### FR – France, Contamine s/Arve

Tel: +33 (0)4 50 25 80 25  
parker.france@parker.com

### GR – Greece, Athens

Tel: +30 210 933 6450  
parker.greece@parker.com

### HU – Hungary, Budapest

Tel: +36 1 220 4155  
parker.hungary@parker.com

### IE – Ireland, Dublin

Tel: +353 (0)1 466 6370  
parker.ireland@parker.com

### IT – Italy, Corsico (MI)

Tel: +39 02 45 19 21  
parker.italy@parker.com

### KZ – Kazakhstan, Almaty

Tel: +7 7272 505 800  
parker.easteurope@parker.com

### NL – The Netherlands, Oldenzaal

Tel: +31 (0)541 585 000  
parker.nl@parker.com

### NO – Norway, Asker

Tel: +47 66 75 34 00  
parker.norway@parker.com

### PL – Poland, Warsaw

Tel: +48 (0)22 573 24 00  
parker.poland@parker.com

### PT – Portugal, Leca da Palmeira

Tel: +351 22 999 7360  
parker.portugal@parker.com

### RO – Romania, Bucharest

Tel: +40 21 252 1382  
parker.romania@parker.com

### RU – Russia, Moscow

Tel: +7 495 645-2156  
parker.russia@parker.com

### SE – Sweden, Spånga

Tel: +46 (0)8 59 79 50 00  
parker.sweden@parker.com

### SK – Slovakia, Banská Bystrica

Tel: +421 484 162 252  
parker.slovakia@parker.com

### SL – Slovenia, Novo Mesto

Tel: +386 7 337 6650  
parker.slovenia@parker.com

### TR – Turkey, Istanbul

Tel: +90 216 4997081  
parker.turkey@parker.com

### UA – Ukraine, Kiev

Tel: +380 44 494 2731  
parker.ukraine@parker.com

### UK – United Kingdom, Warwick

Tel: +44 (0)1926 317 878  
parker.uk@parker.com

### ZA – South Africa, Kempton Park

Tel: +27 (0)11 961 0700  
parker.southafrica@parker.com

## North America

### CA – Canada, Milton, Ontario

Tel: +1 905 693 3000

### US – USA, Cleveland

Tel: +1 216 896 3000

## Asia Pacific

### AU – Australia, Castle Hill

Tel: +61 (0)2-9634 7777

### CN – China, Shanghai

Tel: +86 21 2899 5000

### HK – Hong Kong

Tel: +852 2428 8008

### IN – India, Mumbai

Tel: +91 22 6513 7081-85

### JP – Japan, Tokyo

Tel: +81 (0)3 6408 3901

### KR – South Korea, Seoul

Tel: +82 2 559 0400

### MY – Malaysia, Shah Alam

Tel: +60 3 7849 0800

### NZ – New Zealand, Mt Wellington

Tel: +64 9 574 1744

### SG – Singapore

Tel: +65 6887 6300

### TH – Thailand, Bangkok

Tel: +662 186 7000-99

### TW – Taiwan, Taipei

Tel: +886 2 2298 8987

## South America

### AR – Argentina, Buenos Aires

Tel: +54 3327 44 4129

### BR – Brazil, Sao Jose dos Campos

Tel: +55 800 727 5374

### CL – Chile, Santiago

Tel: +56 2 623 1216

### MX – Mexico, Apodaca

Tel: +52 81 8156 6000

### European Product Information Centre

Free phone: 00 800 27 27 5374

(from AT, BE, CH, CZ, DE, DK, EE, ES, FI, FR, IE, IL, IS, IT, LU, MT, NL, NO, PL, PT, RU, SE, SK, UK, ZA)



### Parker Hannifin Ltd.

Tachbrook Park Drive  
Tachbrook Park,  
Warwick, CV34 6TU  
United Kingdom  
Tel.: +44 (0) 1926 317 878  
Fax: +44 (0) 1926 317 855  
parker.uk@parker.com  
www.parker.com

Your local authorized Parker distributor