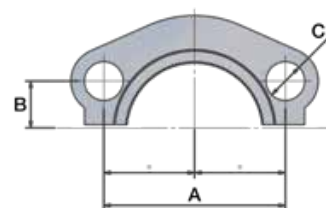


Flange Halves



M1H – ISO 6162-1 Flange Half – Standard Series

(for use with 15, 17 and 19 flanges)

Part Number	Flange			A mm	B mm	C mm	max. dynamic working pressure	
	DN	Inch	Size				MPa	psi
M1H-8	13	1/2	-8	38.1	8.8	8.9	34.5	5000
M1H-12	19	3/4	-12	47.6	11.1	10.6	34.5	5000
M1H-16	25	1	-16	52.4	13.1	10.6	34.5	5000
M1H-20	32	1-1/4	-20	58.7	15.1	12.0	28.0	4000
M1H-24	38	1-1/2	-24	69.9	17.9	13.3	21.0	3000
M1H-32	51	2	-32	77.8	21.5	13.5	21.0	3000
M1H-40	64	2-1/2	-40	88.9	25.4	13.5	17.5	2538
M1H-48	76	3	-48	106.4	31.0	16.7	16.0	2321
M1H-56	89	3-1/2	-56	120.7	35.0	16.7	3.5	508
M1H-64	102	4	-64	130.2	38.9	16.7	3.5	508
M1H-80	127	5	-80	152.4	46.1	16.7	3.5	508

50H – ISO 6162-1 Flange Half 5000 psi

(for use with 4A, 4F and 4N flanges)

Part Number	Flange			A mm	B mm	C mm	max. dynamic working pressure	
	DN	Inch	Size				MPa	psi
50H-20	32	1-1/4	-20	58.7	15.1	12.0	34.5	5000
50H-24	38	1-1/2	-24	69.9	17.9	13.5	34.5	5000
50H-32	51	2	-32	77.8	21.5	13.5	34.5	5000

M2H – ISO 6162-2 Flange Half 6000 psi

(for use with 6A, 6F and 6N flanges)

Part Number	Flange			A mm	B mm	C mm	max. dynamic working pressure	
	DN	Inch	Size				MPa	psi
M2H-8	13	1/2	-8	40.5	9.1	9.0	41.0	6000
M2H-12	19	3/4	-12	50.8	11.9	11.0	41.0	6000
M2H-16	25	1	-16	57.2	13.9	13.0	41.0	6000
M2H-20	32	1-1/4	-20	66.7	15.9	15.0	41.0	6000
M2H-24	38	1-1/2	-24	79.4	18.2	17.0	41.0	6000
M2H-32	51	2	-32	96.8	22.2	22.0	41.0	6000

8FH – ISO 6162-2 Flange Half 8000 psi

(for use with 8A, 8F and 8N flanges)

Part Number	Flange			A mm	B mm	C mm	max. dynamic working pressure	
	DN	Inch	Size				MPa	psi
8FH-12-SM	19	3/4	-12	50.8	11.9	11.0	56.0	8000
8FH-16-SM	25	1	-16	57.2	13.9	13.0	56.0	8000
8FH-20-SM	32	1-1/4	-20	66.7	15.9	13.0	56.0	8000
8FH-20-SM-M14	32	1-1/4	-20	66.7	15.9	15.0	56.0	8000